

WAAS CH <b>56532</b> <b>W35A</b>	APP CRS <b>346°</b>	Rwy Ldg <b>3400</b> TDZE <b>1246</b> Apt Elev <b>1246</b>
--	------------------------	---

# RNAV (GPS) RWY 35

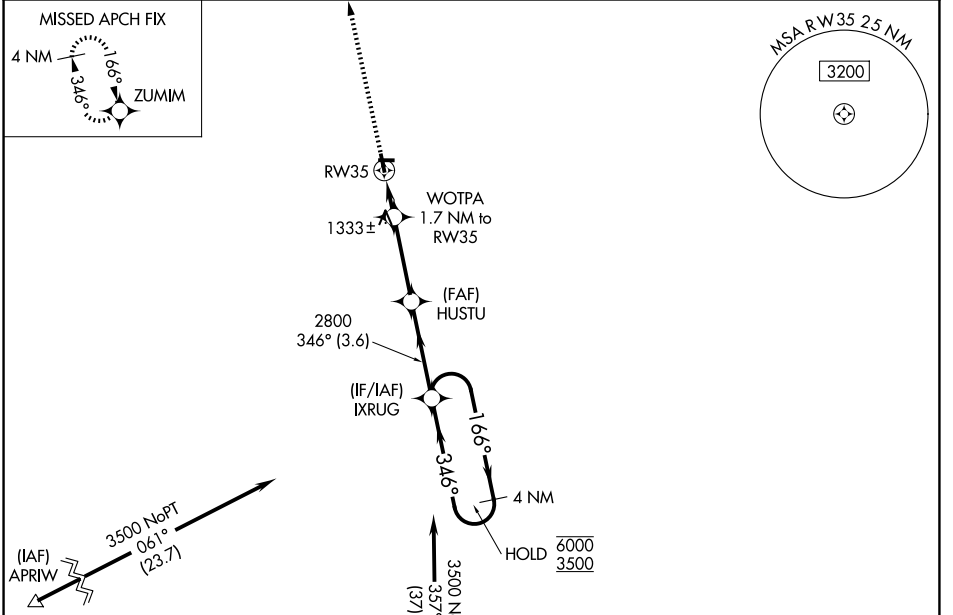
MAHNOMEN COUNTY (3N8)

RNP APCH.

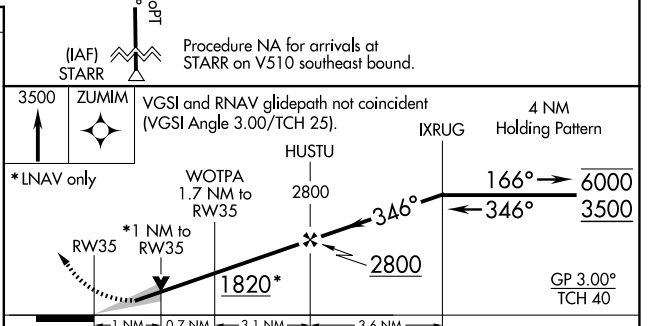
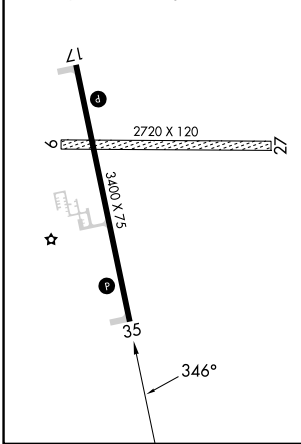
**⚠** Circling NA to Rwy 9 and 27. Baro-VNAV and VDP NA when using Fosston altimeter setting. For uncompensated Baro-VNAV systems, LNAV/VNAV NA below -17°C or above 54°C. When local altimeter setting not received, use Fosston altimeter setting and increase all DA to 1549 feet; increase all MDA 60 feet.

**MISSSED APPROACH:**  
Climb to 3500 direct ZUMIM and hold.

AWOS-3PT <b>121.125</b>	MINNEAPOLIS CENTER <b>127.35 278.3</b>	CTAF <b>122.9</b>
----------------------------	---	----------------------



ELEV <b>1246</b>	TDZE <b>1246</b>
MIRL Rwy 17-35 <b>1</b>	
REIL Rwy 17 and 35 <b>1</b>	



CATEGORY	A		B	C	D
	LPV DA	1496-1	250 (300-1)		
LNAV/VNAV DA	1496-1	250 (300-1)			NA
LNAV MDA	1600-1	354 (400-1)			NA
CIRCLING	1640-1	1700-1			NA
	394 (400-1)	454 (500-1)			

NC-1, 11 JUN 2026 to 09 JUL 2026

NC-1, 11 JUN 2026 to 09 JUL 2026