

WAAS CH <b>58346</b> <b>W22A</b>	APP CRS <b>236°</b>	Rwy Ldg TDZE Apt Elev	<b>4203</b> <b>1593</b> <b>1593</b>
--	------------------------	-----------------------------	---

# RNAV (GPS) Z RWY 22

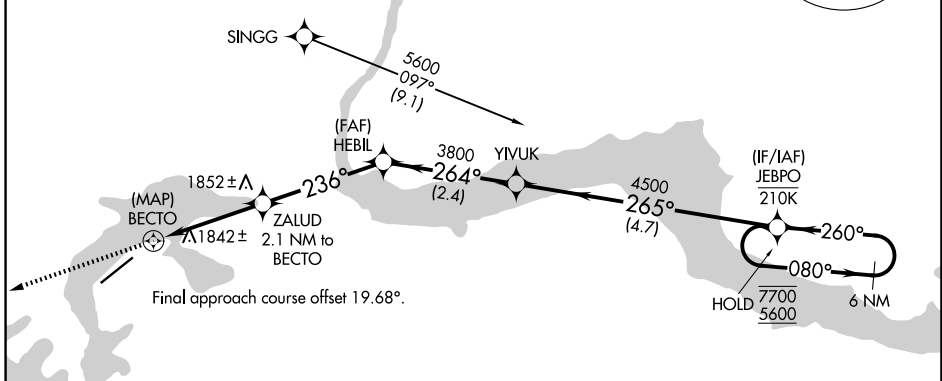
GRAND COULEE DAM (3W7)

RNP APCH - GPS.

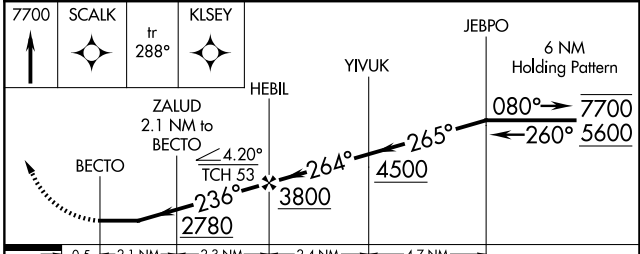
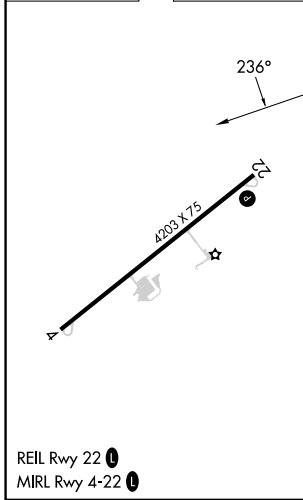
**▼** Rwy 22 helicopter visibility reduction below 1 SM NA. Circling NA at night.  
**▲** Straight-in Rwy 22 at night, operational VGSI required, remain on or above VGSI glidepath until threshold. When local altimeter setting not received, use 258 altimeter setting and increase all MDAs 120 feet and LP Cat B visibility ¼ SM. Circling NA northwest of Rwy 4-22.

MISSED APPROACH: Climb to 7700 direct SCALK and on track 288° to KLSEY and hold, continue climb-in-hold to 7700.

AWOS-3PT <b>128.325</b>	SEATTLE CENTER <b>126.1 291.6</b>	CTAF <b>122.9</b>
----------------------------	--------------------------------------	----------------------



ELEV 1593	TDZE 1593
-----------	-----------



CATEGORY	A	B	C	D
LP MDA	2240-1	647 (700-1)	NA	
CIRCLING	2240-1 647 (700-1)	2860-2¼ 1267 (1300-2¼)	NA	

NW-1, 11 JUN 2026 to 09 JUL 2026

NW-1, 11 JUN 2026 to 09 JUL 2026