

WAAS CH 87122 W36A	APP CRS 358°	Rwy Idg TDZE Apt Elev	4001 284 285
--	------------------------	-----------------------------	---

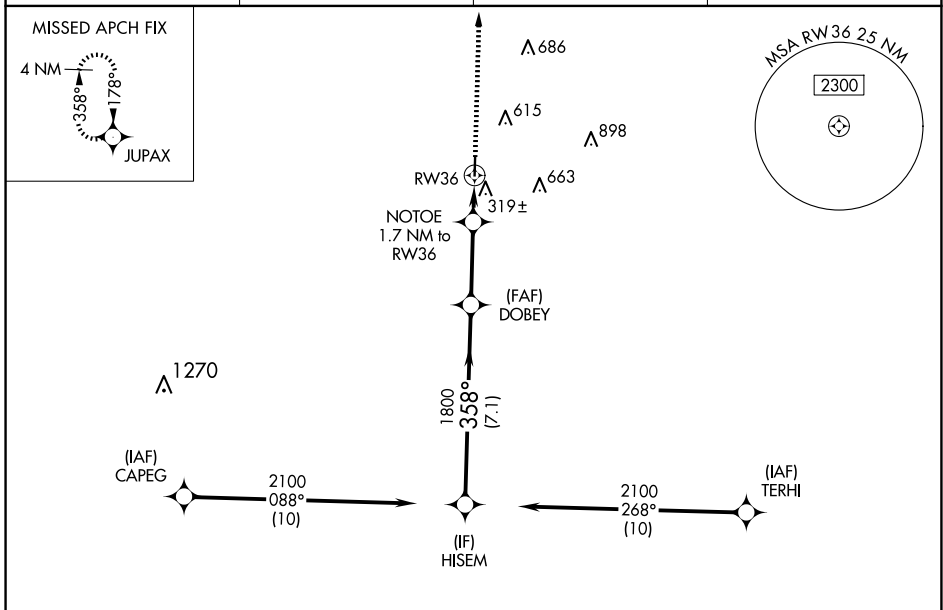
RNAV (GPS) RWY 36

HEARNE MUNI (LHB)

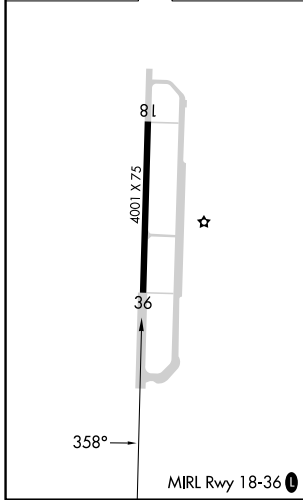
⚠ For uncompensated Baro-VNAV systems, LNAV/VNAV NA below -15°C (5°F) or above 54°C (130°F). DME/DME RNP-0.3 NA. When local altimeter setting not received, use College Station altimeter setting and increase all DA 55 feet and all MDA 60 feet. Increase LPV, LNAV/VNAV all Cats and LNAV Cat C visibility ½ mile. Increase Circling Cat C visibility ¼ mile. Baro-VNAV and VDP NA when using College Station altimeter setting.

MISSED APPROACH: Climb to 2600 direct JUPAX and hold.

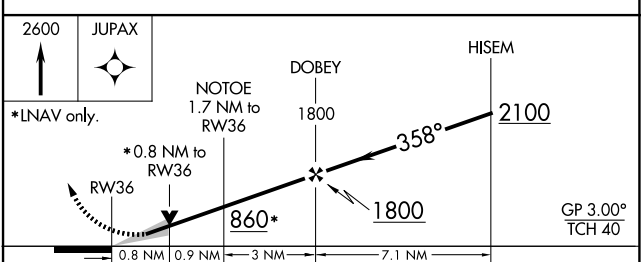
AWOS-3 118.675	HOUSTON APP CON 134.3 360.85	CTAF 122.9	123.3 0
--------------------------	--	----------------------	-----------------------



ELEV 285	TDZE 284
----------	----------



RADAR REQUIRED



CATEGORY	A	B	C	D
LPV DA	484- ³ / ₄	200 (200- ³ / ₄)		NA
LNAV/VNAV DA	534- ⁷ / ₈	250 (300- ⁷ / ₈)		NA
LNAV MDA	580-1	296 (300-1)	580- ⁷ / ₈ 296 (300- ⁷ / ₈)	NA
CIRCLING	800-1 515 (600-1)	920-1 635 (700-1)	1020-2 735 (800-2)	NA

SC-5, 11 JUN 2026 to 09 JUL 2026

SC-5, 11 JUN 2026 to 09 JUL 2026