

WAAS CH 57940 W35A	APP CRS 351°	Rwy Ldg TDZE Apt Elev	5943 675 693
--	------------------------	-----------------------------	---

RNAV (GPS) RWY 35

KENNETH COPELAND (4T2)

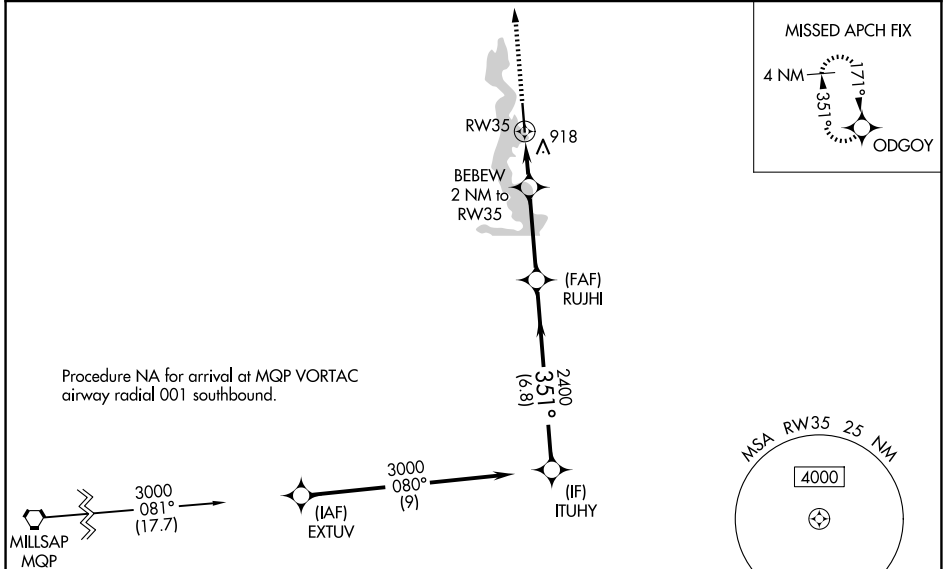
RNP APCH - GPS.

⚠ Rwy 35 helicopter visibility reduction below $\frac{3}{4}$ SM NA. For uncompensated Baro-VNAV systems, LNAV/VNAV NA below -16°C or above 54°C. Baro-VNAV NA when using FTW altimeter setting. Obtain local altimeter setting on CTAF; when local altimeter setting not received, use FTW altimeter setting and increase LPV DA to 955 feet; increase LNAV/VNAV DA to 1191 feet; increase all MDA's 40 feet and LNAV visibility Cat C/D $\frac{1}{4}$ SM, and Circling visibility Cat C $\frac{1}{4}$ SM.

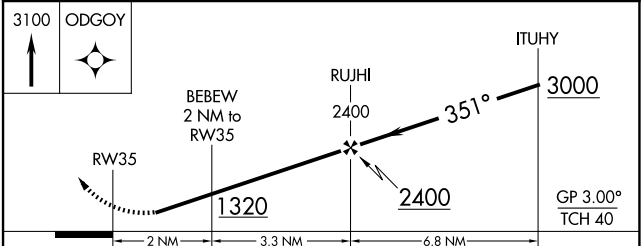
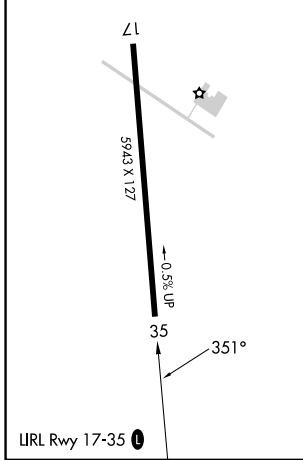
⚠ NA

MISSED APPROACH: Climb to 3100 direct ODGOY and hold.

LONE STAR APP CON 125.8 257.95	UNICOM 123.075 (CTAF) 1
--	-----------------------------------



ELEV 693	TDZE 675
----------	----------



CATEGORY	A	B	C	D
LPV DA	925-1 250 (300-1)			
LNAV/VNAV DA	1161-1 $\frac{3}{8}$ 486 (500-1 $\frac{3}{8}$)			
LNAV MDA	1180-1 505 (500-1)	1180-1 $\frac{3}{8}$ 505 (500-1 $\frac{3}{8}$)		
CIRCLING	1240-1 547 (600-1)	1340-1 $\frac{3}{4}$ 647 (700-1 $\frac{3}{4}$)		1440-2 $\frac{1}{2}$ 747 (800-2 $\frac{1}{2}$)

SC-2, 11 JUN 2026 to 09 JUL 2026

SC-2, 11 JUN 2026 to 09 JUL 2026