

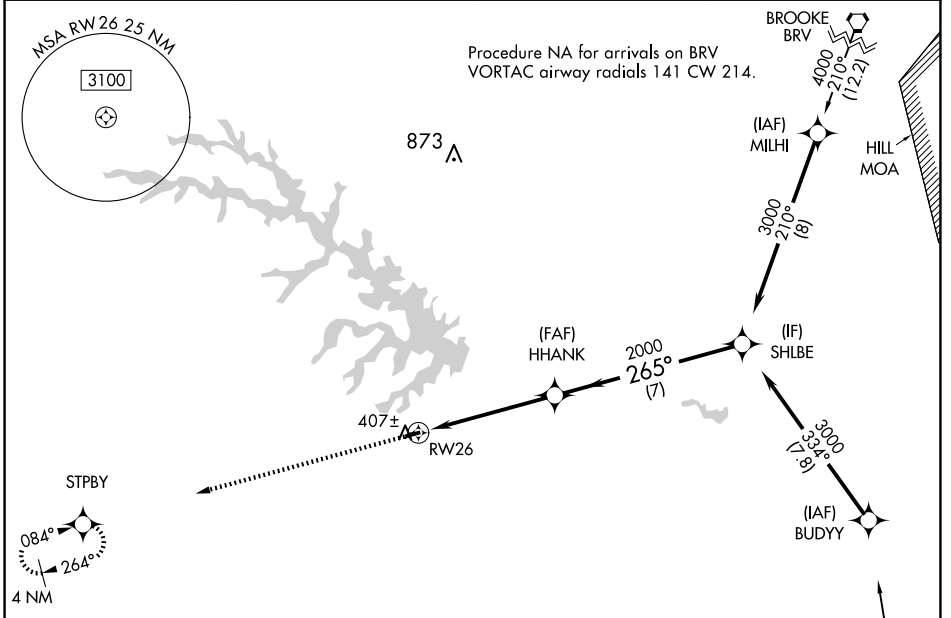
APP CRS	Rwy Idg	<b>2558</b>
<b>265°</b>	TDZE	<b>351</b>
	Apt Elev	<b>351</b>

# RNAV (GPS) RWY 26

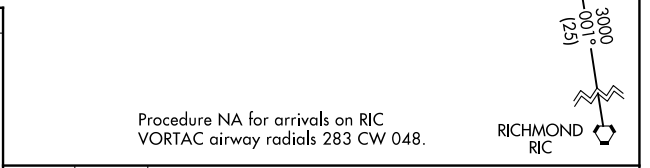
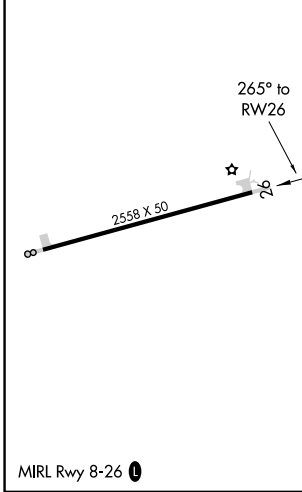
LAKE ANNA (7W4)

RNP APCH.	<p>Procedure NA at night. When local altimeter setting not received, use Louisa altimeter setting and increase all MDA 60 feet. Helicopter visibility reduction below 3 SM NA.</p>	<p>MISSED APPROACH: Climb to 3000 direct STPBY and hold.</p>
<p><b>▼</b> Procedure NA at night. When local altimeter setting not received, use Louisa altimeter setting and increase all MDA 60 feet. <b>▲</b> Helicopter visibility reduction below 3 SM NA.</p>		

AWOS-3 <b>120.775</b>	LKU AWOS-3 <b>119.475</b>	POTOMAC APP CON <b>126.75 307.2</b>	CTAF <b>122.9</b>
--------------------------	------------------------------	----------------------------------------	----------------------



ELEV 351	TDZE 351
----------	----------



	3000	STPBY	Visual Segment - Obstacles.	SHLBE
	↑	✧		3000
			HHANK	
			2000	
			5.1 NM	7 NM
CATEGORY	A	B	C	D
LNAV MDA	1360-3	1009 (1100-3)	NA	
CIRCLING	1360-3	1009 (1100-3)	NA	

NE-3, 11 JUN 2026 to 09 JUL 2026

NE-3, 11 JUN 2026 to 09 JUL 2026