

WAAS CH 42537 W29A	APP CRS 292°	Rwy Ldg 2756 TDZE 721 Apt Elev 721
----------------------------------------	------------------------	---------------------------------------------------------------

RNAV (GPS) RWY 29

CYNTHIANA-HARRISON COUNTY (ØI8)

RNP APCH.

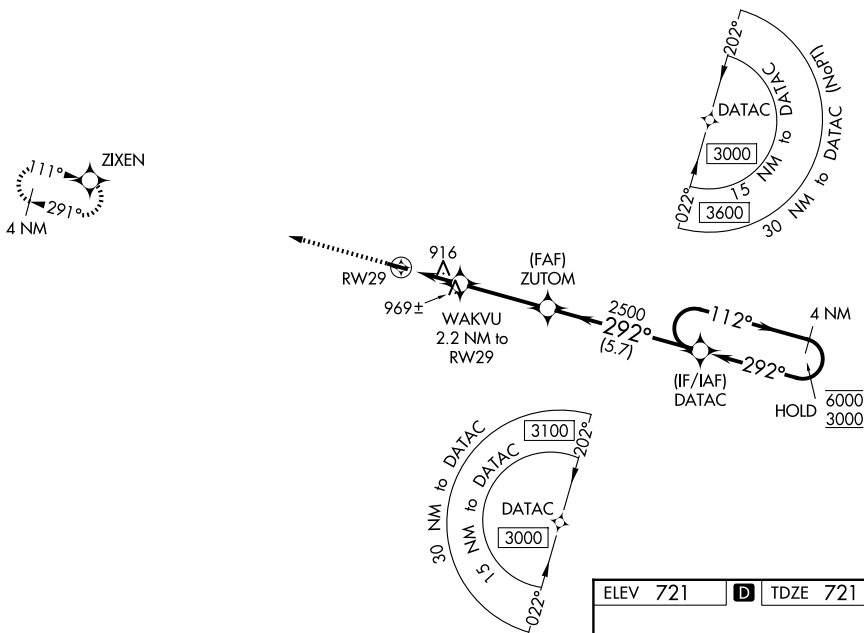
▼ Procedure NA at night. Rwy 29 helicopter visibility reduction below 1 SM NA. Use Georgetown altimeter setting; when not received, use Lexington altimeter setting and increase all MDA 40 feet.

MISSED APPROACH: Climb to 3000 direct ZIXEN and hold.

27K AWOS-3
119.975

LEXINGTON APP CON
120.15 259.3 (040°-220°)
120.75 298.9 (221°-039°)

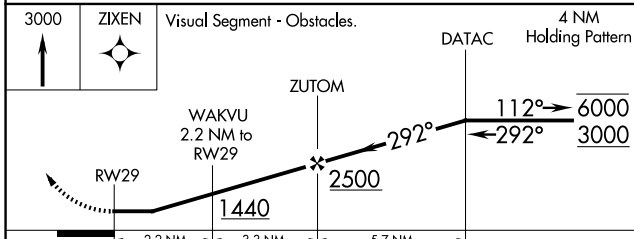
UNICOM
122.8 (CTAF) **Ø**



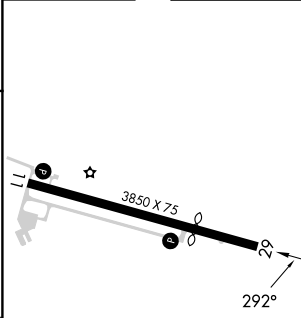
SE-1, 11 JUN 2026 to 09 JUL 2026

SE-1, 11 JUN 2026 to 09 JUL 2026

ELEV 721 **D** TDZE 721



CATEGORY	A	B	C	D
LP MDA	1240-1	519 (600-1)		NA
LNAV MDA	1280-1	559 (600-1)		NA
CIRCLING	1340-1 619 (700-1)	1560-1¼ 839 (900-1¼)		NA



MIRL Rwy 11-29 **Ø**
REIL Rvys 11 and 29 **Ø**