

WAAS CH 93844 W27A	APP CRS 267°	Rwy Idg TDZE 752 Apt Elev 752	3199
--	------------------------	---	-------------

RNAV (GPS) RWY 27

BUFFALO-LANCASTER RGNL (BQR)

RNP APCH - GPS.

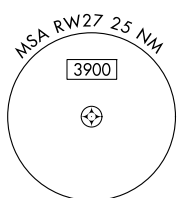
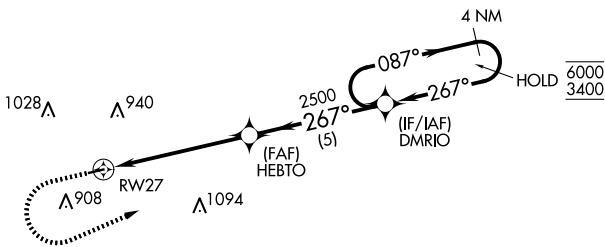
▼ Rwy 27 helicopter visibility reduction below 1 SM NA. Baro-VNAV NA.
▲ NA Use Buffalo Niagara Intl altimeter setting. Straight-in Rwy 27 at night, Circling Rwy 27 at night, operational VGSI required, remain on or above VGSI glidepath until threshold.

MISSED APPROACH: Climb to 1300 then climbing left turn to 3400 direct DMRIO and hold, continue climb-in-hold to 3400.

BUF ASOS
135.35

BUFFALO APP CON
126.15 263.125

UNICOM
123.05 (CTAF) 0

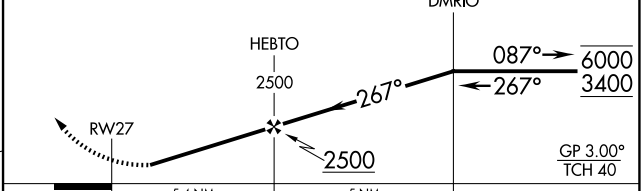
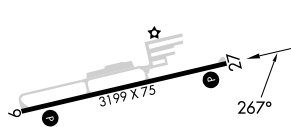


▲2448
2010▲ ▲2179

ELEV 752	TDZE 752
----------	----------



4 NM Holding Pattern



CATEGORY	A	B	C	D
LPV DA	1070-1	318 (400-1)		NA
LNAV/VNAV DA	1164-1 1/8	412 (500-1 1/8)		NA
LNAV MDA	1320-1	568 (600-1)		NA
CIRCLING	1320-1	568 (600-1)		NA

MIRL Rwy 9-27 0
REIL Rwy 9 and 27 0

NE-2, 11 JUN 2026 to 09 JUL 2026

NE-2, 11 JUN 2026 to 09 JUL 2026