

APP CRS	Rwy Ldg	3998
291°	TDZE	100
	Apt Elev	100

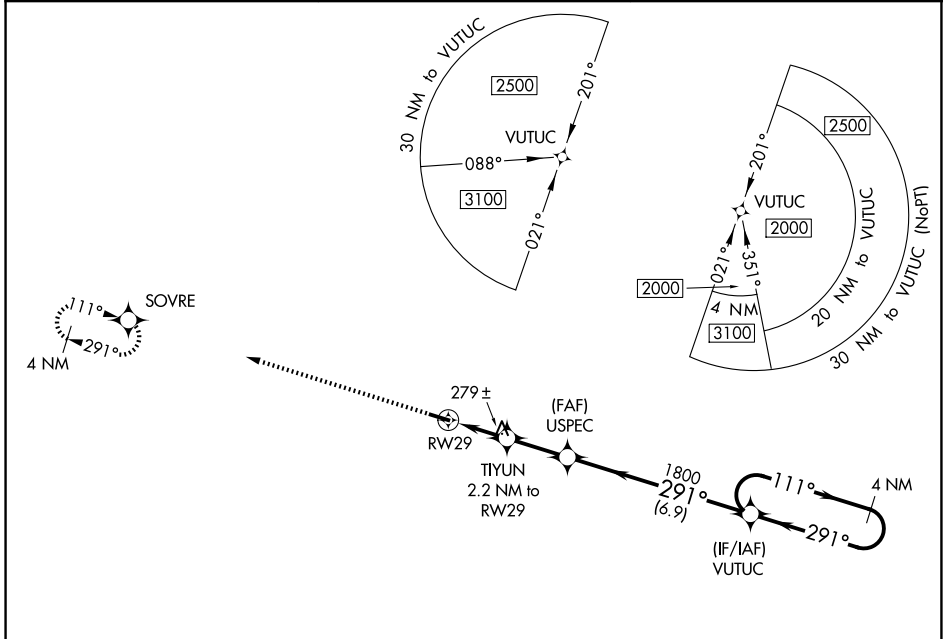
RNAV (GPS) RWY 29

GENEVA MUNI (33J)

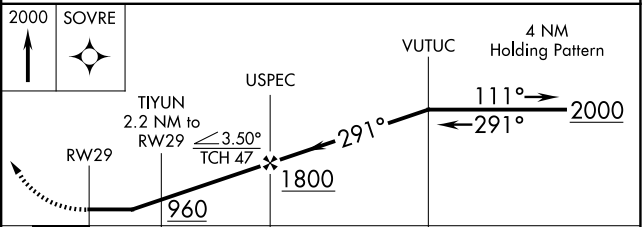
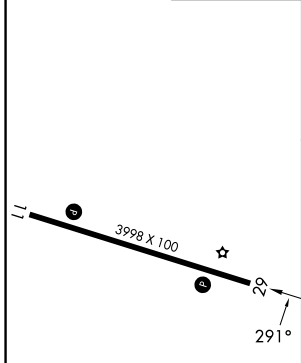
NA DME/DME RNP-0.3 NA. Procedure NA at night. Use Cairns AAF altimeter setting, when not received, use Dothan altimeter setting and increase all MDA 40 feet, and increase all Cat C visibilities ¼ SM. Rwy 29 helicopter visibility reduction below 1 SM NA.

MISSED APPROACH: Climb to 2000 direct SOVRE and hold.

KOZR ATIS 111.2 316.15	CAIRNS APP CON ★ 133.75 270.35	UNICOM 122.8 (CTAF) 0
----------------------------------	--	---------------------------------



ELEV 100	TDZE 100
----------	----------



CATEGORY	A	B	C	D
LNAV MDA	600-1 500 (500-1)		600-1⅓ 500 (500-1⅓)	NA
CIRCLING	700-1 600 (600-1)	720-1 620 (700-1)	900-2¼ 800 (800-2¼)	NA

SE-4, 11 JUN 2026 to 09 JUL 2026

SE-4, 11 JUN 2026 to 09 JUL 2026