

COPTER RNAV (GPS) 037°

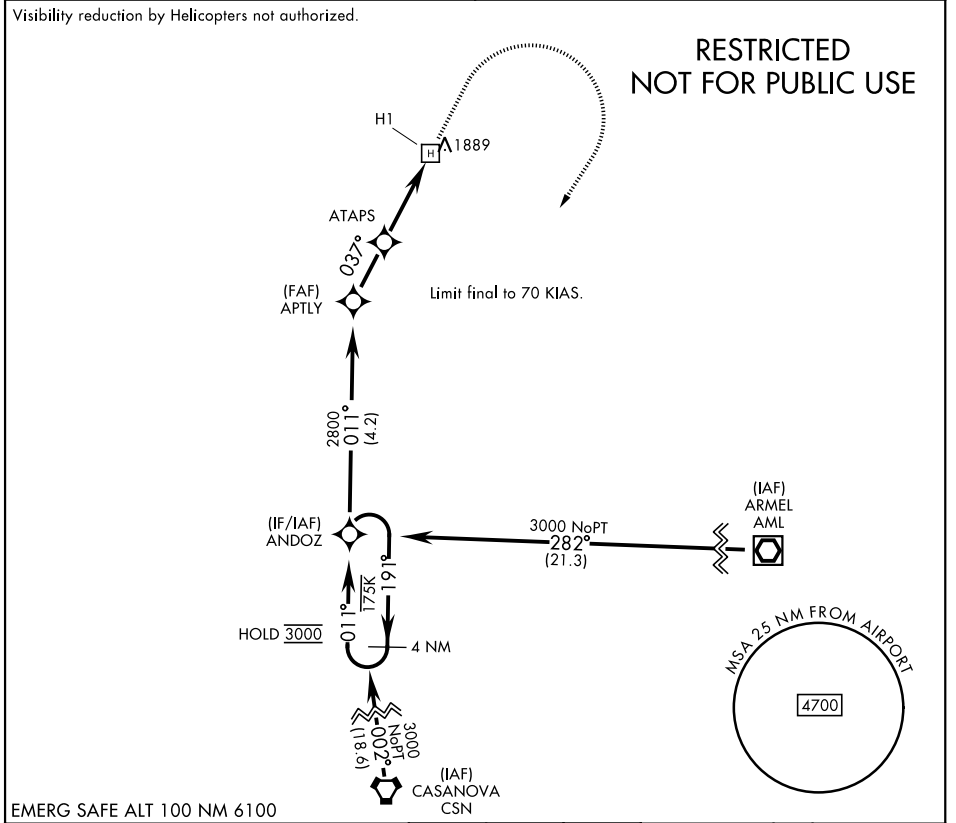
APCH CRS	Rwy Idg	50
037°	TDZE	1707
	Arprt Elev	1707

[USN]

BLUEGRASS (9VA5)

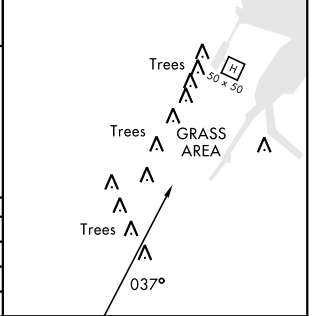
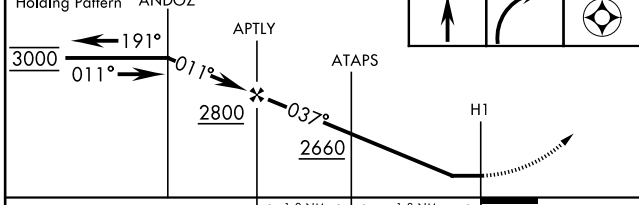
RNP APCH-GPS	MISSED APPROACH: Climb to 2700 then climbing right turn to 3000 direct ANDOZ and hold.
--------------	--

POTOMAC APP CON 120.45 306.925	BLUEGRASS ADVISORY ★ 126.2 241.0
--	--



EMERG SAFE ALT 100 NM 6100

4 NM Holding Pattern ANDOZ	2700	3000	ANDOZ	ELEV	1707	TDZE	1707
----------------------------	------	------	-------	------	------	------	------



CATEGORY	COPTER		
LNAV MDA	2220-1	513	(600-1)
WASHINGTON DULLES INTL ALTIMETER SETTING			
LNAV MDA	2480-1	773	(800-1)

COPTER RNAV (GPS) 037°

NE-3, 11 JUN 2026 to 09 JUL 2026

NE-3, 11 JUN 2026 to 09 JUL 2026