

# COPTER VOR/DME or TACAN 056°

VORTAC LDN <b>114.3</b> Chan <b>90</b>	APCH CRS <b>056°</b>	Rwy Idg TDZE Arprt Elev <b>50</b> <b>1707</b> <b>1707</b>
--	-------------------------	--

[USN]

BLUEGRASS (9VA5)

▼ Circling not authorized.  
Visibility reduction by helicopter NA.

MISSED APPROACH: Climb to 4000, then right turn to intercept LDN VORTAC R-056 to WLCAT and hold.

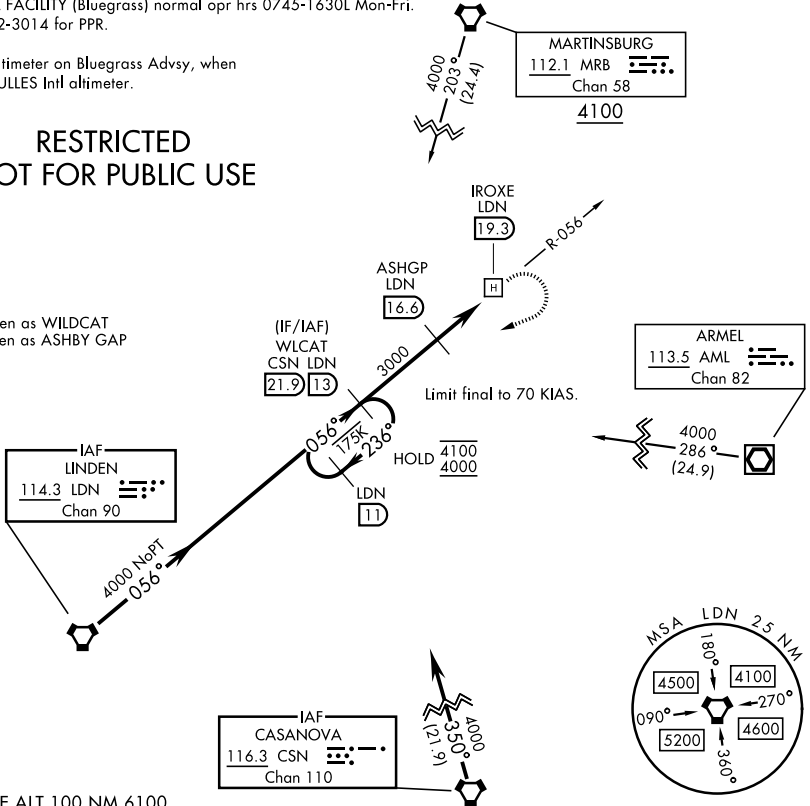
POTOMAC APP CON <b>120.45 306.925</b>	BLUEGRASS ADVISORY ★ <b>126.2 241.0</b>
--	--

FEMA SPECIAL FACILITY (Bluegrass) normal opr hrs 0745-1630L Mon-Fri.  
Phone 540-542-3014 for PPR.

Obtain local altimeter on Bluegrass Advsy, when not rcvd use DULLES Intl altimeter.

## RESTRICTED NOT FOR PUBLIC USE

WLCAT - spoken as WILDCAT  
ASHGP - spoken as ASHBY GAP



NE-3, 11 JUN 2026 to 09 JUL 2026

NE-3, 11 JUN 2026 to 09 JUL 2026

EMERG SAFE ALT 100 NM 6100

<table border="1"> <tr> <td>4000</td> <td>WLCAT LDN 13</td> </tr> </table>		4000	WLCAT LDN 13	ELEV 1707	TDZE 1707		
4000	WLCAT LDN 13						
<table border="1"> <tr> <td>LDN 11</td> <td>WLCAT CSN LDN 21.9 13</td> <td>ASHGP LDN 16.6</td> <td>IROXE LDN 19.3</td> </tr> </table>		LDN 11	WLCAT CSN LDN 21.9 13	ASHGP LDN 16.6	IROXE LDN 19.3		
LDN 11	WLCAT CSN LDN 21.9 13	ASHGP LDN 16.6	IROXE LDN 19.3				
<table border="1"> <tr> <td>4100</td> <td>4000</td> </tr> </table>		4100	4000				
4100	4000						
<table border="1"> <tr> <td>2.7 NM</td> <td>0.1</td> </tr> </table>		2.7 NM	0.1				
2.7 NM	0.1						
CATEGORY	COPTER						
H-056	2460-1	753	(800-1)				
WASHINGTON DULLES INTL ALTIMETER SETTING							
H-056	2720-1¼	1013	(1100-1¼)				

# COPTER VOR/DME or TACAN 056°