

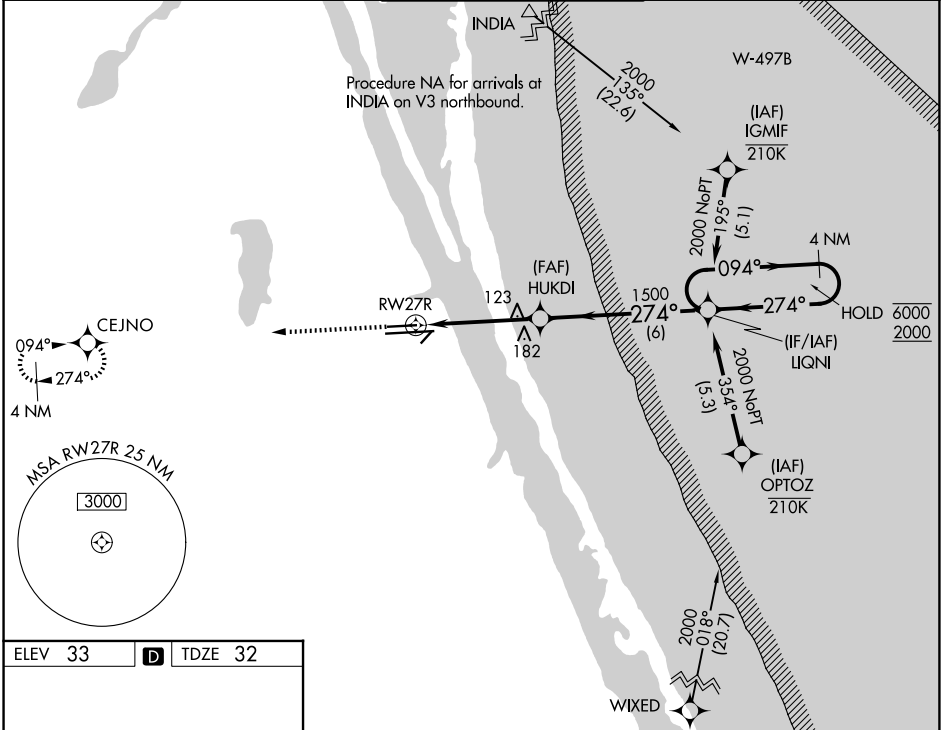
WAAS CH <b>50101</b> <b>W27A</b>	APP CRS <b>274°</b>	Rwy Ldg TDZE Apt Elev	<b>6000</b> <b>32</b> <b>33</b>
--	------------------------	-----------------------------	---------------------------------------

# RNAV (GPS) RWY 27R

MELBOURNE ORLANDO INTL (MLB)

RNP APCH - GPS	MISSED APPROACH: Climb to 2000 direct CEJNO and hold.
▼ For uncompensated Baro-VNAV systems, LNAV/VNAV NA below 2°C or above 54°C.	

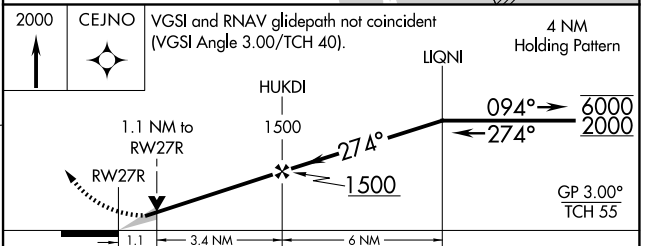
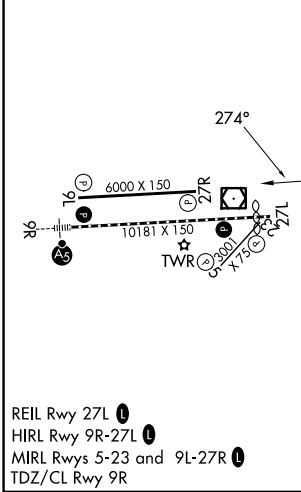
ATIS <b>132.55</b>	ORLANDO APP CON <b>126.025 281.425</b>	MELBOURNE TOWER ★ <b>118.2 (CTAF) 0 257.8</b>	GND CON <b>121.9</b>	UNICOM <b>122.95</b>
-----------------------	---	--	-------------------------	-------------------------



SE-3, 09 JUL 2026 to 06 AUG 2026

SE-3, 09 JUL 2026 to 06 AUG 2026

ELEV 33	<b>D</b>	TDZE 32
---------	----------	---------



CATEGORY	A	B	C	D
LPV DA		232-3/4	200 (200-3/4)	
LNAV/VNAV DA		282-3/4	250 (300-3/4)	
LNAV MDA		400-1	368 (400-1)	
CIRCLING	500-1 467 (500-1)	560-1 527 (600-1)	680-1 3/4 647 (700-1 3/4)	880-2 3/4 847 (900-2 3/4)