

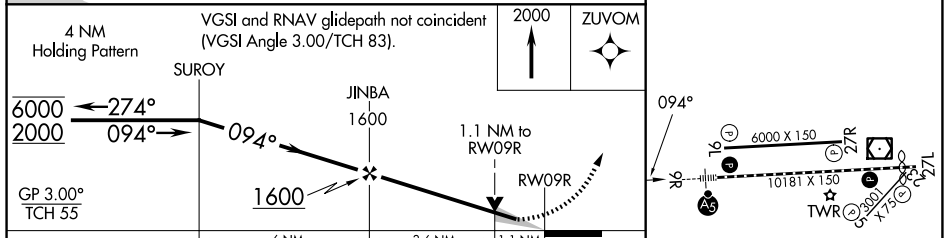
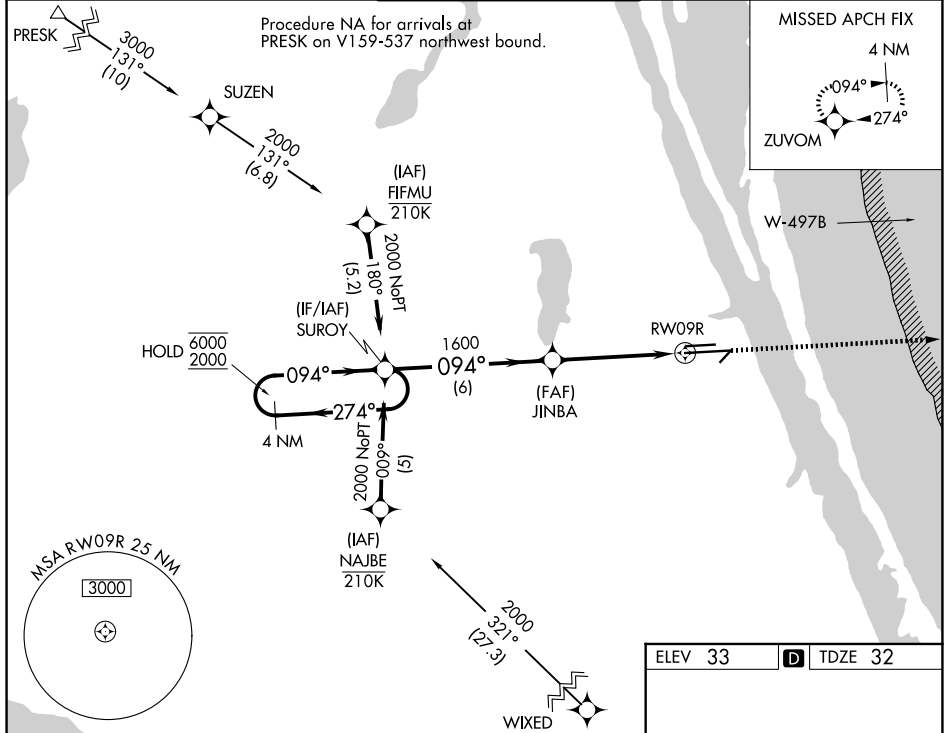
WAAS CH <b>60901</b> <b>W09B</b>	APP CRS <b>094°</b>	Rwy Ldg <b>10181</b> TDZE <b>32</b> Apt Elev <b>33</b>
----------------------------------------	------------------------	--------------------------------------------------------------

# RNAV (GPS) RWY 9R

MELBOURNE ORLANDO INTL (MLB)

RNP APCH - GPS.		MALSR	MISSED APPROACH: Climb to 2000 direct ZUVOM and hold.	
For uncompensated Baro-VNAV systems, LNAV/VNAV NA below 2°C or above 54°C.				

ATIS <b>132.55</b>	ORLANDO APP CON <b>126.025 281.425</b>	MELBOURNE TOWER ★ <b>118.2 (CTAF) 257.8</b>	GND CON <b>121.9</b>	UNICOM <b>122.95</b>
-----------------------	-------------------------------------------	------------------------------------------------	-------------------------	-------------------------



CATEGORY	A	B	C	D
LPV DA	232/18		200 (200-½)	
LNAV/VNAV DA	427/35		395 (400-⅝)	
LNAV MDA	480/24	448 (500-½)	480/45	448 (500-⅞)
CIRCLING	500-1 467 (500-1)	560-1 527 (600-1)	680-1¾ 647 (700-1¾)	880-2¾ 847 (900-2¾)

ELEV 33	TDZE 32
---------	---------

ZUVOM 094°

6000 X 150

10181 X 150

TWR 2000

REIL Rwy 27L 1

HIRL Rwy 9R-27L 1

MIRL Rwys 5-23 and 9L-27R 1

TDZ/CL Rwy 9R 1

SE-3, 09 JUL 2026 to 06 AUG 2026

SE-3, 09 JUL 2026 to 06 AUG 2026