

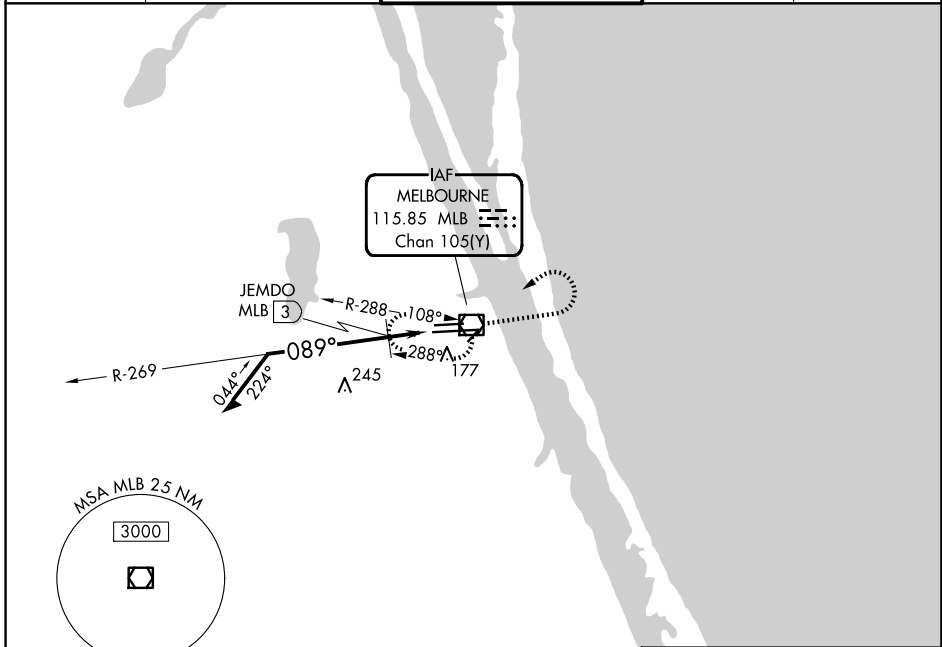
VOR/DME MLB 115.85 Chan 105(Y)	APP CRS 089°	Rwy Ldg 10181 TDZE 32 Apt Elev 33
--	------------------------	--

VOR RWY 9R

MELBOURNE ORLANDO INTL (MLB)

<p>▼ JEMDO FIX minimums: For inop MALSR, ▲ increase S-9R Cats C and D visibility to RVR 6000.</p>	<p>MALSR </p>	<p>MISSED APPROACH: Climb to 1000, then climbing left turn to 2100 direct MLB VOR/DME and hold, continue climb-in-hold to 2100.</p>
---	---------------	---

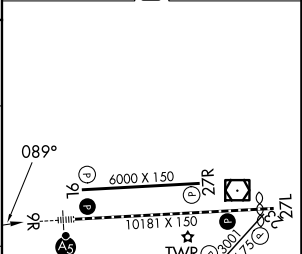
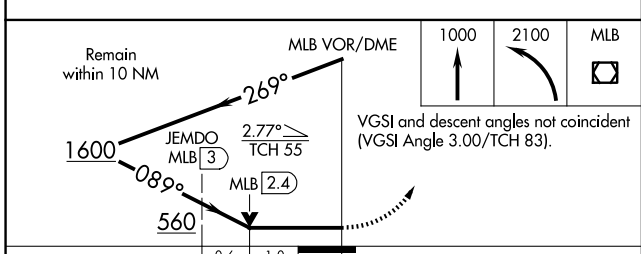
ATIS 132.55	ORLANDO APP CON 126.025 281.425	MELBOURNE TOWER ★ 118.2(CTAF) 257.8	GND CON 121.9	UNICOM 122.95
-----------------------	---	---	-------------------------	-------------------------



SE-3, 09 JUL 2026 to 06 AUG 2026

SE-3, 09 JUL 2026 to 06 AUG 2026

ELEV 33	D TDZE 32
---------	------------------



CATEGORY	A	B	C	D
S-9R	560/24	528 (600-½)	560/55	528 (600-1)
CIRCLING	560-1	527 (600-1)	680-1¾ 647 (700-1¾)	880-2¾ 847 (900-2¾)
JEMDO FIX MINIMUMS				
S-9R	440/24	408 (500-½)	440/40	408 (500-¾)
CIRCLING	560-1	527 (600-1)	680-1¾ 647 (700-1¾)	880-2¾ 847 (900-2¾)

- REIL Rwy 27L **0**
- HIRL Rwy 9R-27L **0**
- MIRL Rws 5-23 and 9L-27R **0**
- TDZ/CL Rwy 9R **0**