

# HI-ILS or LOC Z RWY 31

LOC I-OFF <b>109.5</b>	APCH CRS <b>307°</b>	Rwy ldg <b>10,612</b> TDZE <b>991</b> Arprt Elev <b>1048</b>
---------------------------	-------------------------	--

[USAF]

OFFUTT AFB (KOFF)

RADAR or DME required

- ▼ \* When ALS inop, increase CAT CDE RVR to 40 and vis to 3/4 mile.
- \*\* When ALS inop, increase CAT CDE RVR to 55 and vis to 1 mile.
- \*\*\* Circling not authorized N of Rwy 13-31.

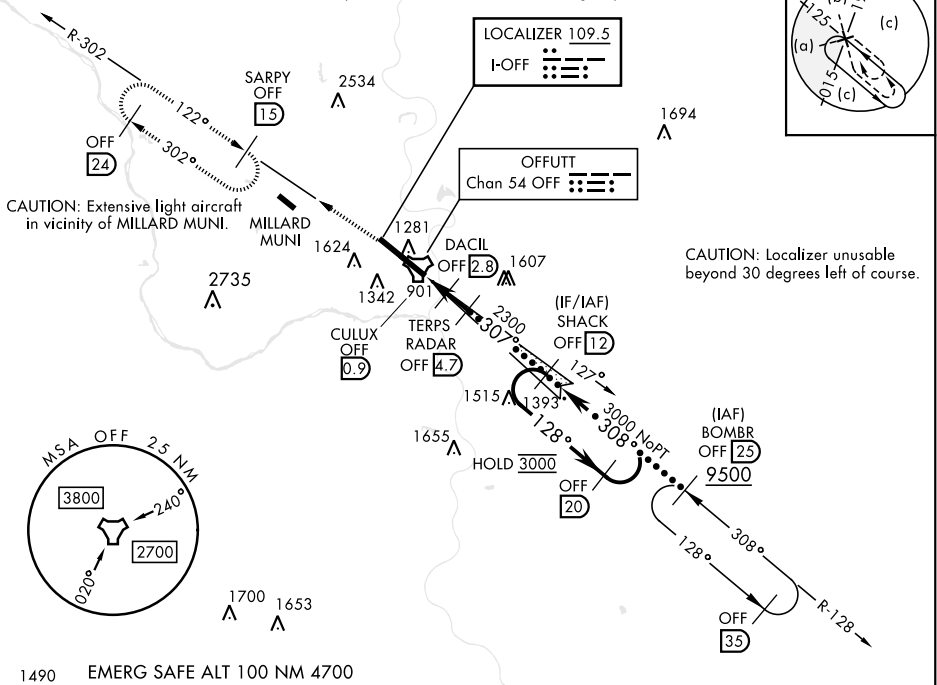


MISSED APPROACH: Climb to 3000 via OFF TACAN R-302 to SARPY and hold.

ATIS <b>126.025 273.5</b>	OMAHA APP CON <b>124.5 263.0</b> (E) <b>135.875 354.05</b> (W)	TOWER <b>123.7 279.625</b>	GND CON <b>121.7 289.4</b>
------------------------------	--	-------------------------------	-------------------------------

RVR 1800 authorized with use of FD or AP or HUD to DA.

CAUTION: When circling to Rwy 13 at night, operational VGSI required, remain on or above VGSI glidepath until threshold.



3000 OFF R-302	SARPY OFF 15	TERPS RADAR OFF 4.7	SHACK OFF 12	OFF 20
OFF TACAN	CULUX OFF 0.9	DACIL OFF 2.8	OFF 128	OFF 3000
0.5 1.9 NM		1.9 NM		
CATEGORY	C	D	E	
S-ILS 31*	1192/24	200	(200-1/2)	
S-LOC 31**	1360/35	368	(400-3/4)	
CIRCLING ***	1660-13/4 612 (700-13/4)	1940-3	892	(900-3)

ELEV 1048	TDZE 991
Rwy 13 ldg 10,695' Rwy 31 ldg 10,612'	
FAF to MAP 3.8 NM	
Knots	120 140 160 180 200
Min:Sec	1:54 1:38 1:26 1:16 1:08

# HI-ILS or LOC Z RWY 31

NC-2, 09 JUL 2026 to 06 AUG 2026

NC-2, 09 JUL 2026 to 06 AUG 2026