

HI-TACAN Z RWY 31

TACAN OFF Chan 54	APCH CRS 316°	Rwy ldg 10,612 TDZE 991 Arpt Elev 1048
-----------------------------	-------------------------	---

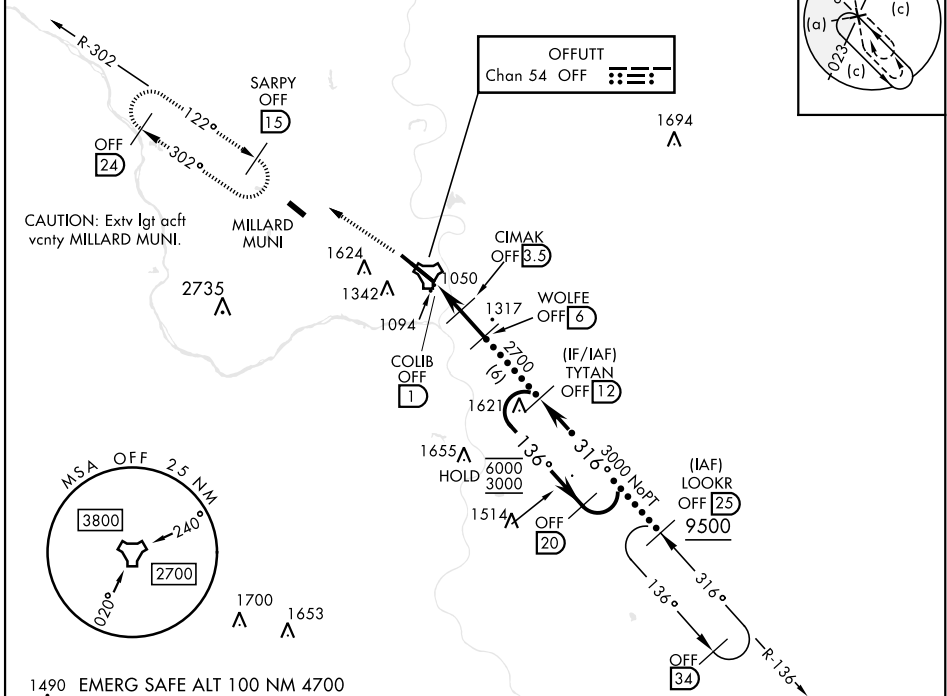
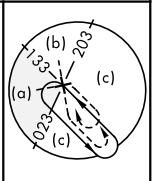
[USAF]

OFFUTT AFB (KOFF)

<p>▼ *When ALS inop, increase CAT CDE RVR to 55, vis to 1 mile. **Circling not authorized N of Rwy 13-31.</p>	<p>ALSF-1 </p>	<p>MISSED APPROACH: Climb to 3000 via OFF TACAN R-302 to SARPY and hold.</p>
---	--------------------	--

<p>ATIS 126.025 273.5</p>	<p>OMAHA APP CON 124.5 263.0 (E) 135.875 354.05 (W)</p>	<p>TOWER 123.7 279.625</p>	<p>GND CON 121.7 289.4</p>
--------------------------------------	---	---------------------------------------	---------------------------------------

CAUTION: When circling to Rwy 13 at night, operational VGSI required, remain on or above VGSI glidepath until threshold.



NC-2, 09 JUL 2026 to 06 AUG 2026

NC-2, 09 JUL 2026 to 06 AUG 2026

<p>3000 OFF R-302</p> <p>SARPY OFF (15)</p>	<p>TYTAN OFF (12)</p> <p>OFF (20)</p>	<p>ELEV 1048</p> <p>TDZE 991</p> <p>Rwy 13 ldg 10,695' Rwy 31 ldg 10,612'</p>
<p>OFF TACAN</p> <p>COLIB OFF (1)</p> <p>CIMAK OFF (3.5)</p> <p>WOLFE OFF (6)</p> <p>2.82° TCH 56</p>	<p>2700</p> <p>1940</p> <p>133°</p> <p>316°</p> <p>6000 3000</p>	<p></p>
<p>0.6</p> <p>2.5 NM</p> <p>2.5 NM</p>	<p>CATEGORY</p> <p>C</p> <p>D</p> <p>E</p>	<p>HIRL Rwy 13-31 Rwy 13-31 ALS nstd</p>
<p>S-31*</p> <p>1360/40</p> <p>368</p> <p>(400-¾)</p>	<p>CIRCLING**</p> <p>1660-¾ 612 (700-1¾)</p> <p>1940-3</p> <p>892</p> <p>(900-3)</p>	

HI-TACAN Z RWY 31