

ILS or LOC RWY 13

LOC I-ATB 111.7	APCH CRS 127°	Rwy ldg 10,695 TDZE 1048 Arpt Elev 1048
---------------------------	-------------------------	--

[USAF]

OFFUTT AFB (KOFF)

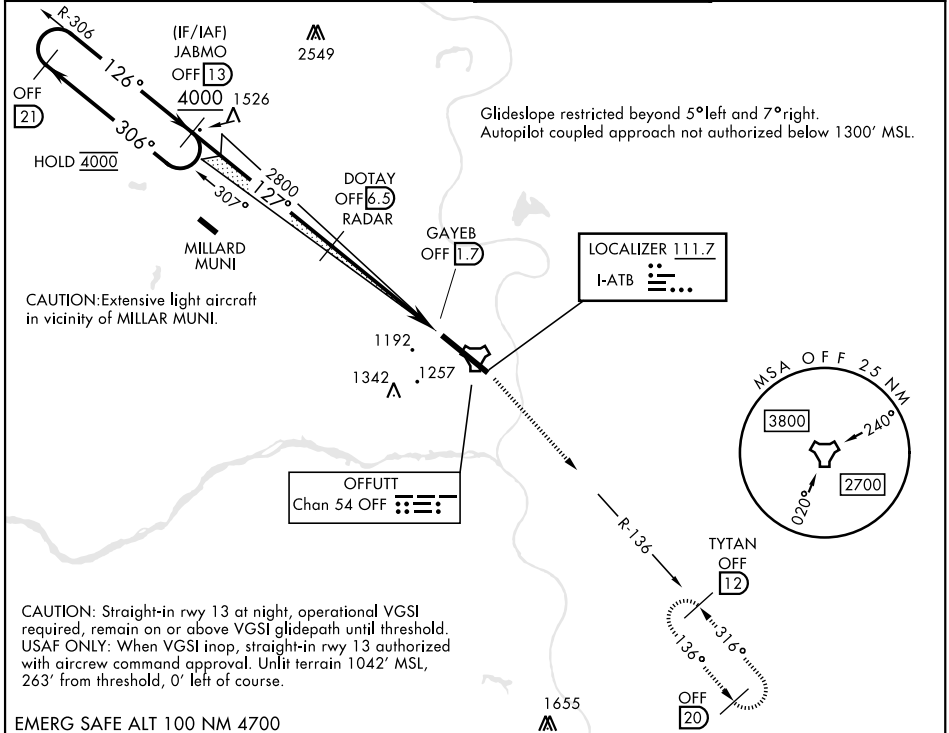
RADAR or DME required

* When ALS inop, increase CAT AB RVR to 55, vis to 1 mile; CAT CDE vis to 1/8 miles.
 ** Circling not authorized N of Rwy 13-31.

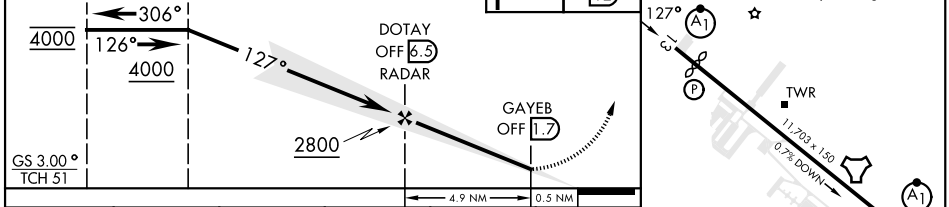
ALSF-1

MISSED APPROACH: Climb to 3000 via OFF TACAN R-136 to TYTAN and hold.

ATIS 126.025 273.5	OMAHA APP CON 124.5 263.0 (E) 135.875 354.05 (W)	TOWER 123.7 279.625	GND CON 121.7 289.4
------------------------------	--	-------------------------------	-------------------------------



EMERG SAFE ALT 100 NM 4700	3000 OFF R-136	TYTAN OFF 12	ELEV 1048	TDZE 1048
----------------------------	-------------------	-----------------	-----------	-----------



CATEGORY	A	B	C	D	E	HIRL Rwy 13-31 Rwy 13-31 ALS nstd FAF to MAP 4.9 NM
S-ILS 13	1298/50		250	(300-1)		
S-LOC 13*	1560/50 512 (600-1)		1560/55 512 (600-1)			Knots
CIRCLING**	1560-1 512 (600-1)		1660-1 612 (700-134)		1940-3 892 (900-3)	60
						90
						120
						150
						180
						Min:Sec
						4:54
						3:16
						2:27
						1:58
						1:38

ILS or LOC RWY 13

NC-2, 09 JUL 2026 to 06 AUG 2026

NC-2, 09 JUL 2026 to 06 AUG 2026