

OMAHA, NEBRASKA

RNAV (GPS) RWY 31

OFFUTT AFB (KOFF)

WAAS CH 91357 W31A	APCH CRS 307°	Rwy ldg TDZE Arprt Elev	10,612 991 1048
--------------------------	------------------	-------------------------------	-----------------------

-(USAF)

RNP APCH-GPS

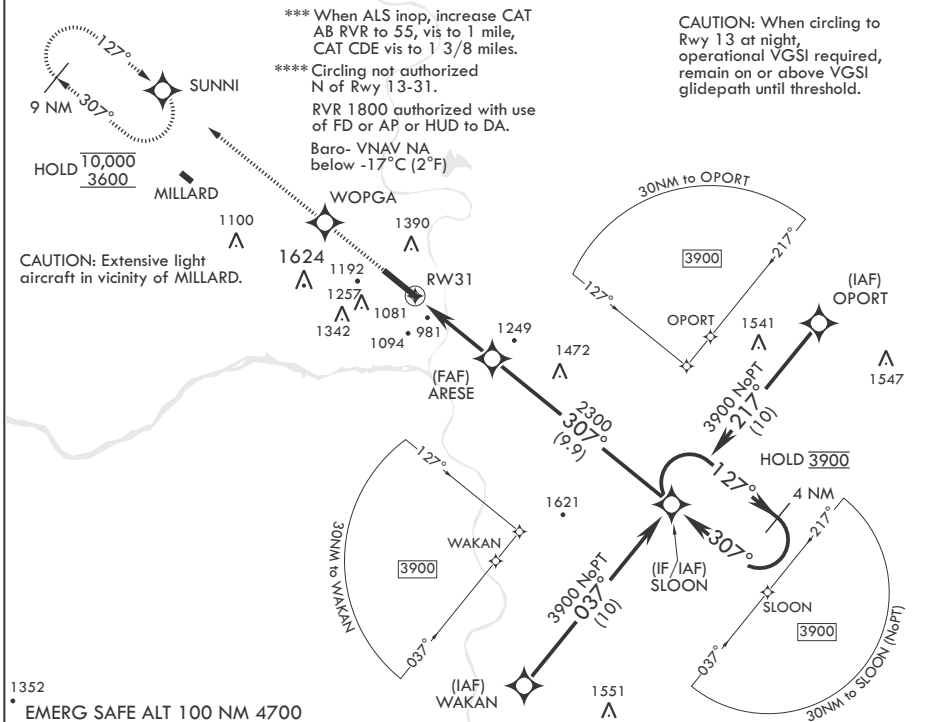
▼ * When ALS inop, increase RVR to 40 and vis to 3/4 mile.
** When ALS inop, increase RVR to 60 and vis to 1 1/8 miles.

ALSF-1

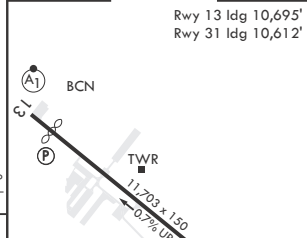
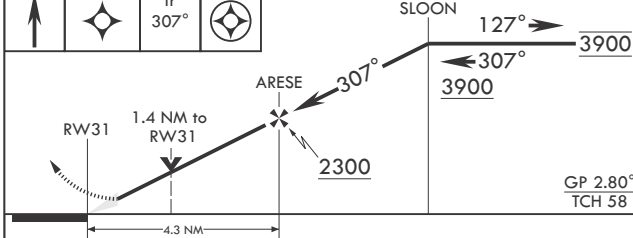


MISSED APPROACH: Climb to 3600 direct WOPGA then track 307° to SUNNI and hold.

ATIS 126.025 273.5	OMAHA APP CON/DEP CON 124.5 263.0 E 135.875 354.05 W	TOWER 123.7 279.625	GND CON 121.7 289.4
-----------------------	--	------------------------	------------------------



3600	WOPGA	tr 307°	SUNNI	ELEV 1048	TDZE 991
------	-------	---------	-------	-----------	----------



CATEGORY	A	B	C	D	E
LPV DA*	1192/24		200	(200-1/2)	
LNAV/VNAV DA**	1382/35		390	(400-5/8)	
LNAV MDA***	1440/24 448 (400-1/2)		1440/45	448 (400-1/8)	
☐ CIRCLING****	1500-1 452 (500-1)	1560-1 512 (600-1)	1660-1 1/4 612 (700-1 1/4)	1940-3 892 (900-3)	

OMAHA, NEBRASKA

41°07'N - 95°55'W

OFFUTT AFB (KOFF)

Amdt 1 22FEB24

RNAV (GPS) RWY 31

NC-2, 09 JUL 2026 to 06 AUG 2026

NC-2, 09 JUL 2026 to 06 AUG 2026