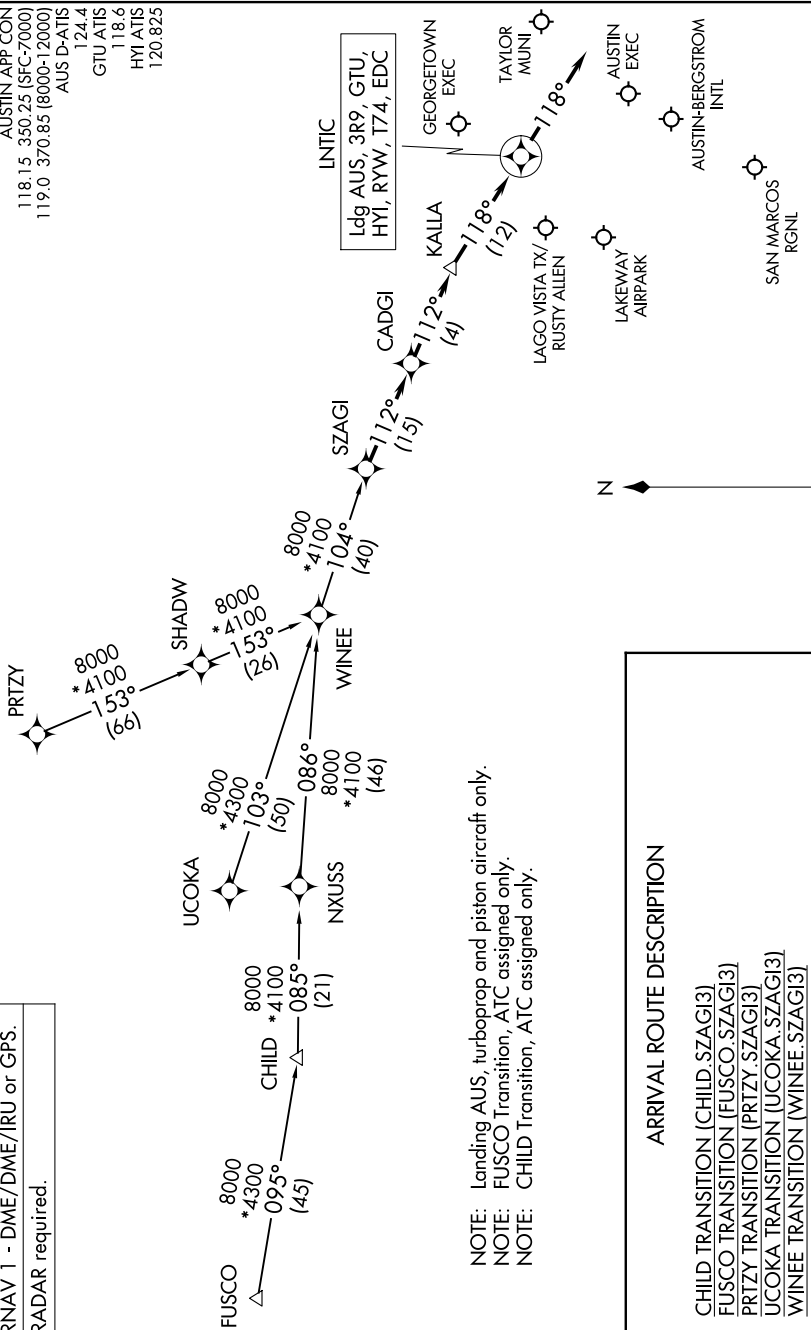


SZAGI THREE ARRIVAL (RNAV)

AUSTIN, TEXAS

AUSTIN APP CON
 118.15 350.25 (SFC-7000)
 119.0 370.85 (8000-12000)
 AUS D-ATIS
 124.4
 GTU ATIS
 118.6
 HYI ATIS
 120.825

LNTIC
 Ldg AUS, 3R9, GTU,
 HYI, RYW, T74, EDC



NOTE: Landing AUS, turboprop and piston aircraft only.
 NOTE: FUSCO Transition, ATC assigned only.
 NOTE: CHILD Transition, ATC assigned only.

ARRIVAL ROUTE DESCRIPTION

- CHILD TRANSITION (CHILD.SZAGI3)
- FUSCO TRANSITION (FUSCO.SZAGI3)
- PRITZY TRANSITION (PRITZY.SZAGI3)
- UCOKA TRANSITION (UCOKA.SZAGI3)
- WINEE TRANSITION (WINEE.SZAGI3)

LANDING ALL AIRPORTS: From SZAGI on track 112° to CADGI, then on track 112° to KALLA, then on track 118° to LNTIC, then on track 118°. Expect RADAR vectors to final approach course.

NOTE: Chart not to scale.

SZAGI THREE ARRIVAL (RNAV)

(SZAGI.SZAGI3) 02OCT25

AUSTIN, TEXAS