


BITHO SEVEN ARRIVAL

ORLANDO, FLORIDA

ORLANDO APP CON
 128.375 338.2
 ISM ATIS
 128.775
 KCOF ATIS
 119.175 273.5
 MLB ATIS
 132.55
 MCO D-ATIS ARR
 121.25
 TIX ATIS
 120.625

ORMOND BEACH
 112.6 OMN 
 Chan 73

OCALA
 113.7 OCF 
 Chan 84

ORLANDO
 112.2 ORL 
 Chan 59

LAMMA TURBOJET VERTICAL NAVIGATION PLANNING INFORMATION

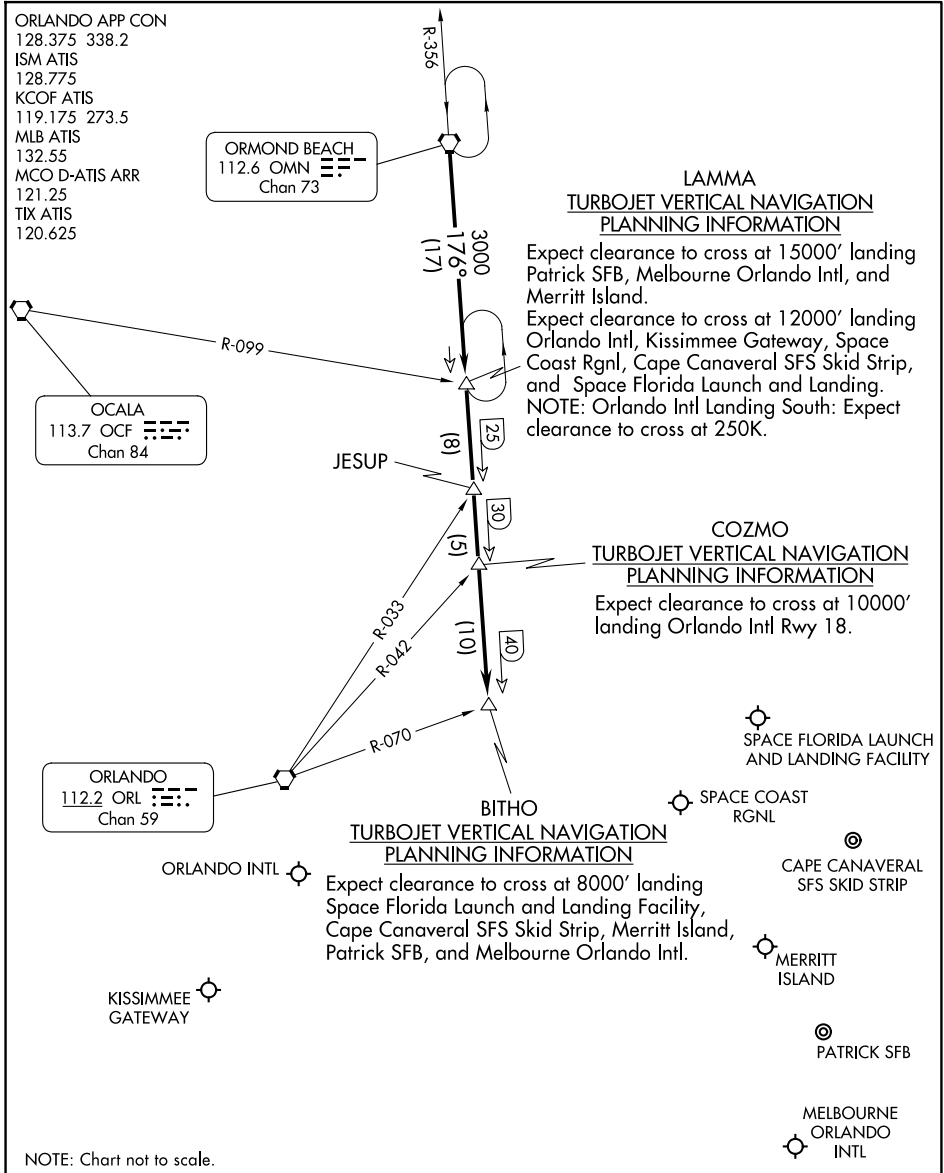
Expect clearance to cross at 15000' landing Patrick SFB, Melbourne Orlando Intl, and Merritt Island.
 Expect clearance to cross at 12000' landing Orlando Intl, Kissimmee Gateway, Space Coast Rgnl, Cape Canaveral SFS Skid Strip, and Space Florida Launch and Landing.
 NOTE: Orlando Intl Landing South: Expect clearance to cross at 250K.

COZMO TURBOJET VERTICAL NAVIGATION PLANNING INFORMATION

Expect clearance to cross at 10000' landing Orlando Intl Rwy 18.

BITHO TURBOJET VERTICAL NAVIGATION PLANNING INFORMATION

Expect clearance to cross at 8000' landing Space Florida Launch and Landing Facility, Cape Canaveral SFS Skid Strip, Merritt Island, Patrick SFB, and Melbourne Orlando Intl.



SE-3: 09 JUL 2026 to 06 AUG 2026

SE-3: 09 JUL 2026 to 06 AUG 2026

ARRIVAL ROUTE DESCRIPTION

From over OMN VORTAC via OMN R-176 to BITHO INT. Expect RADAR vectors to final approach course after BITHO INT.