

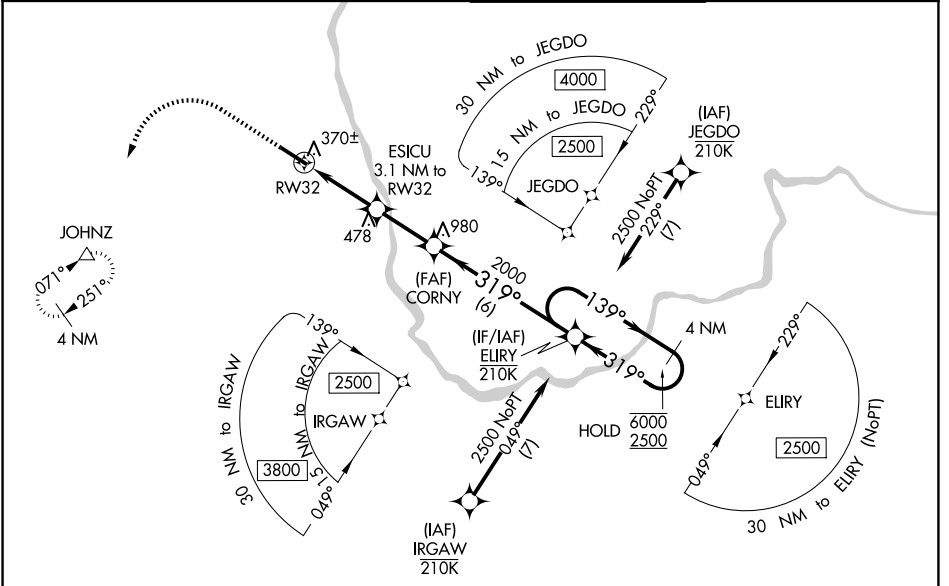
WAAS CH <b>73030</b> W32A	APP CRS <b>319°</b>	Rwy Ldg TDZE Apt Elev	<b>5650</b> <b>193</b> <b>200</b>
---------------------------------	------------------------	-----------------------------	---

# RNAV (GPS) RWY 32

BOIRE FLD (ASH)

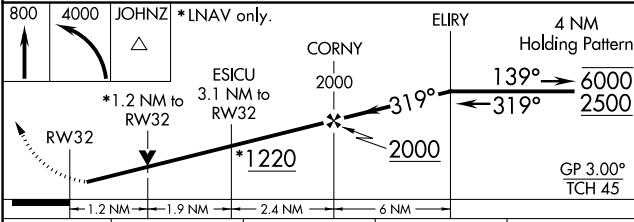
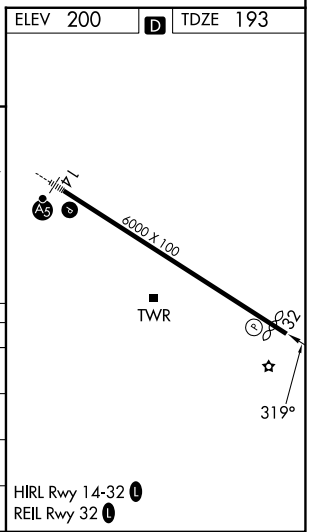
RNP APCH.	<p><b>▼</b> Rwy 32 helicopter visibility reduction below ¾ SM NA. <b>▲</b> For uncompensated Baro-VNAV systems, LNAV/VNAV NA below -15°C or above 54°C.</p>	<p>MISSED APPROACH: Climb to 800 then climbing left turn to 4000 direct JOHNZ and hold, continue climb-in-hold to 4000.</p>
-----------	---	---

ATIS <b>125.1</b>	BOSTON APP CON <b>124.9 269.075</b>	NASHUA TOWER <b>133.2</b> (CTAF) <b>0</b>	GND CON <b>121.8</b>
----------------------	--	--	-------------------------



NE-1, 09 JUL 2026 to 06 AUG 2026

NE-1, 09 JUL 2026 to 06 AUG 2026



CATEGORY	A	B	C	D
LPV DA		477-7/8	284 (300-7/8)	
LNAV/VNAV DA		633-1 1/4	440 (500-1 1/4)	
LNAV MDA	620-1	427 (500-1)	620-1 1/4	427 (500-1 1/4)
CIRCLING	820-1 620 (700-1)	840-1 640 (700-1)	900-2 700 (700-2)	1000-2 1/2 800 (800-2 1/2)