

(ILEXY4.ILEXY) 23166

ILEXY FOUR DEPARTURE (RNAV) AL-5724 (FAA)

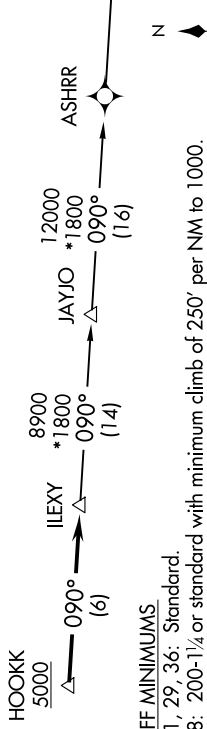
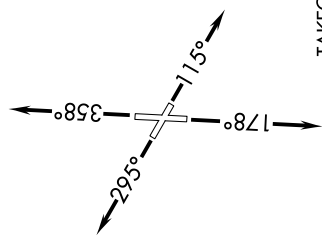
GEORGETOWN EXEC (GTU)
GEORGETOWN, TEXAS

920Z 09JUL2026 06:00:00

**TOP ALTITUDE:
ASSIGNED BY ATC**

RNAV 1- DME/DME/IRU or GPS.
RADAR required.

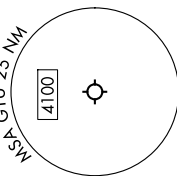
ATIS 118.6
CLNC DEL 119.125
CLNC DEL (when lwr closed) 121.1
GND CON 119.125
GEORGETOWN TOWER* 120.225 (CTAF)
UNICOM 123.0
AUSTIN DEP CON 119.0 370.85



TAKEOFF MINIMUMS

Rwys 11, 29, 36: Standard.

Rwys 18: 200-1/4 or standard with minimum climb of 250' per NM to 1000.



NOTE: Chart not to scale.

DEPARTURE ROUTE DESCRIPTION

- TAKEOFF RUNWAY 11:** Climb on heading 115° or as assigned by ATC for vectors to cross HOOKK at or above 5000, thence . . .
- TAKEOFF RUNWAY 18:** Climb on heading 178° or as assigned by ATC for vectors to cross HOOKK at or above 5000, thence . . .
- TAKEOFF RUNWAY 29:** Climb on heading 295° or as assigned by ATC for vectors to cross HOOKK at or above 5000, thence . . .
- TAKEOFF RUNWAY 36:** Climb on heading 358° or as assigned by ATC for vectors to cross HOOKK at or above 5000, thence . . .

. . . on track 090° to ILEXY, then on transition. Maintain altitude assigned by ATC. Expect filed altitude 10 minutes after departure.

JAYJO TRANSITION (ILEXY4.JAYJO)
ZENZI TRANSITION (ILEXY4.ZENZI)

ILEXY FOUR DEPARTURE (RNAV) (ILEXY4.ILEXY) 15JUN23

GEORGETOWN, TEXAS
GEORGETOWN EXEC (GTU)