

WAAS CH 70441 W11A	APP CRS 115°	Rwy Ldg 4099 TDZE 790 Apt Elev 790
--	------------------------	---

RNAV (GPS) RWY 11

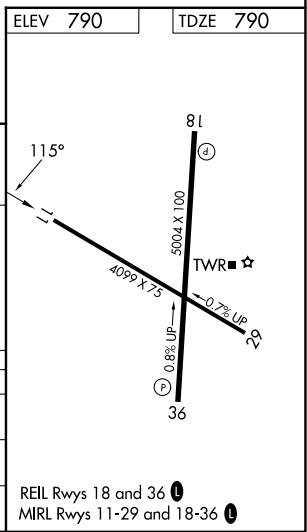
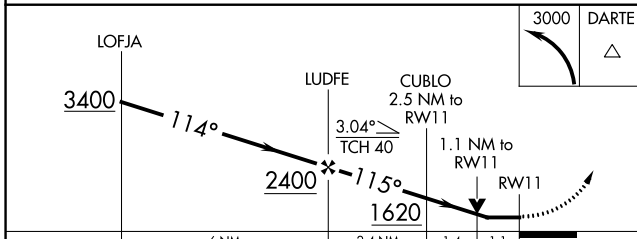
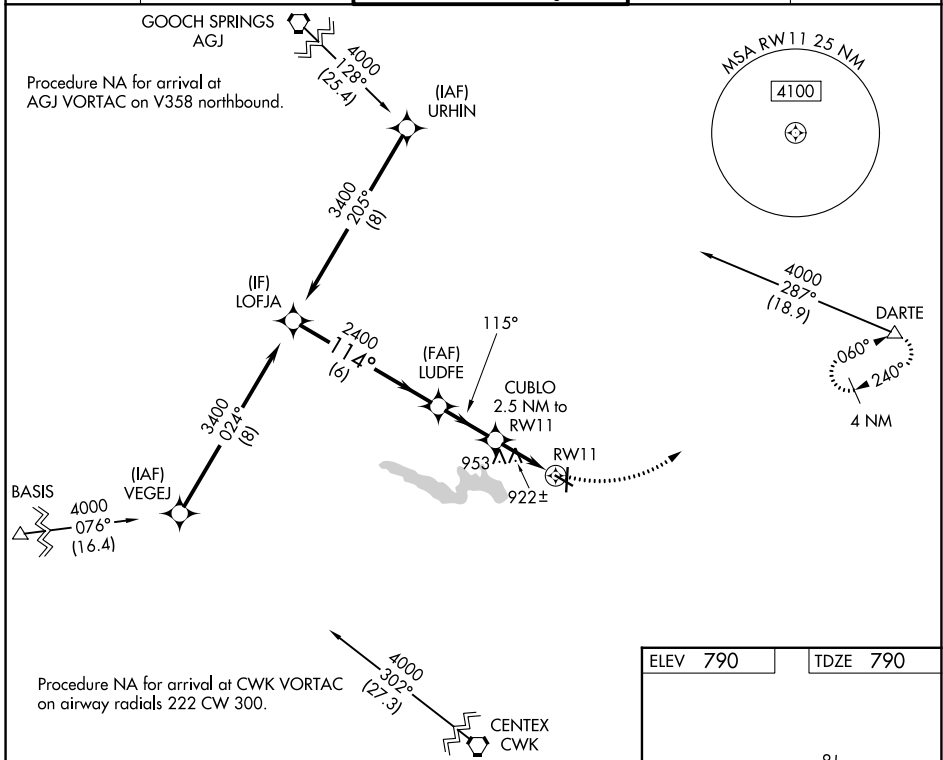
GEORGETOWN EXEC (GTU)

RNP APCH

▼ Rwy 11 helicopter visibility reduction below 3/4 SM NA. When local altimeter setting not received, use Skylark Field altimeter setting and increase all MDA 80 feet. Increase LP and Circling Cat C/D visibility 1/2 SM and LNAV Cat C/D visibility 1/8 SM. VDP NA when using Skylark Field altimeter setting.

MISSED APPROACH:
Climbing left turn to 3000 direct DARTE and hold.

ATIS 118.6	AUSTIN APP CON 119.0 370.85	GEORGETOWN TOWER ★ 120.225 (CTAF) 0	GND CON 119.125	UNICOM 123.0
----------------------	---------------------------------------	---	---------------------------	------------------------



CATEGORY	A	B	C	D
LP MDA	1180-1	390 (400-1)	1180-1 1/8	390 (400-1 1/8)
LNAV MDA	1220-1	430 (500-1)	1220-1 1/4	430 (500-1 1/4)
CIRCLING	1240-1 450 (500-1)	1340-1 550 (600-1)	1360-1 1/2 570 (600-1 1/2)	1640-2 3/4 850 (900-2 3/4)

SC-3, 09 JUL 2026 to 06 AUG 2026

SC-3, 09 JUL 2026 to 06 AUG 2026