

# MMARY ONE ARRIVAL (RNAV) Arrival Routes

ASPEN, COLORADO

SW-1, 09 JUL 2026 to 06 AUG 2026 '1-M

RNAV 1 - DME/DME/IRU or GPS.  
RADAR required.

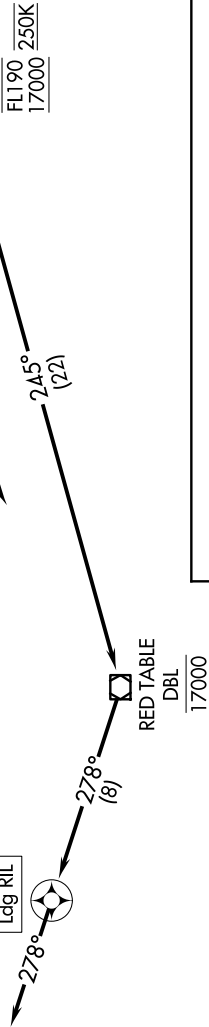
DENVER CENTER  
128.65 282.2  
ASPEN APP CON ★  
123.8 288.3  
ASE ATIS  
120.4  
ASPEN TOWER ★  
118.85 (CTAF) 288.3

○ RIFLE GARFIELD COUNTY

1100U  
16000  
Ldg RIL

12 NM  
083°  
263°  
MMARY  
FL190 250K  
17000

WERNR  
16000  
Ldg ASE



## ARRIVAL ROUTE DESCRIPTION

**LANDING ASE:** From MMARY on track 263° to cross WERNR at 16000, then on track 230°. Expect RADAR vectors to final approach course.

**LANDING RIL:** From MMARY on track 245° to cross DBL VOR/DME at 17000, then on track 278° to cross 1100U at 16000, then on track 278°. Expect RADAR vectors to final approach course.

○ ASPEN PITKIN COUNTY/  
SARDY FLD

NOTE: Chart not to scale.

# MMARY ONE ARRIVAL (RNAV) Arrival Routes

ASPEN, COLORADO

SW-1, 09 JUL 2026 to 06 AUG 2026