

LOC/DME I-RIL 110.9 Chan 46	APP CRS 258°	Rwy Ldg TDZE Apt Elev N/A N/A 5537
---	------------------------	--

LOC-A

RIFLE GARFIELD COUNTY (R.I.L)

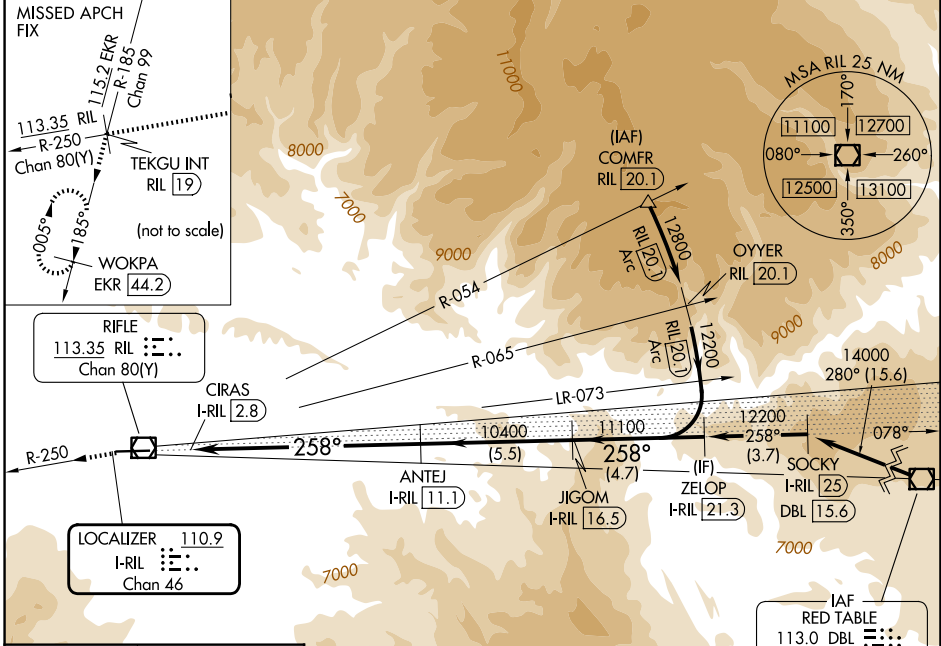
DME required.

⚠ Circling NA south of Rwy 8-26 at night. Rwy 26 helicopter visibility reduction below 3/4 SM NA.

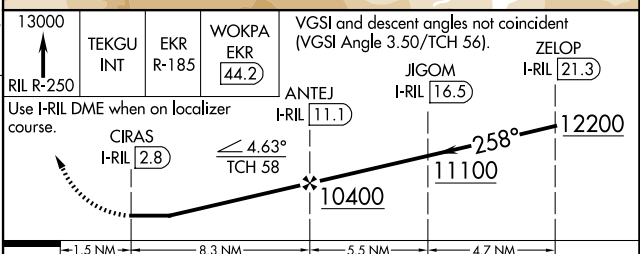
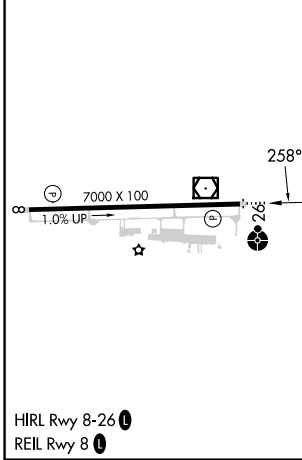
⚠ -13°C

MISSED APPROACH: Climb to 13000 on RIL VOR/DME R-250 to TEKGU INT/RIL 19 DME and on EKR VOR/DME R-185 to WOKPA/EKR 44.2 DME and hold.

ASOS 135.275	DENVER CENTER 134.95 327.075	UNICOM 122.8 (CTAF) 0
------------------------	--	---------------------------------



ELEV 5537



CATEGORY	A	B	C	D
CIRCLING	7920-1 3/4	2383 (2400-1 3/4)	7920-3 2383 (2400-3)	NA

SW-1, 09 JUL 2026 to 06 AUG 2026

SW-1, 09 JUL 2026 to 06 AUG 2026