

APP CRS	Rwy Ldg	<b>7000</b>
<b>259°</b>	TDZE	<b>5537</b>
	Apt Elev	<b>5537</b>

# RNAV (RNP) Y RWY 26

RIFLE GARFIELD COUNTY (R.I.L)

RNP AR APCH - GPS. Authorization required. From TRUEL or SLOUM: RF.

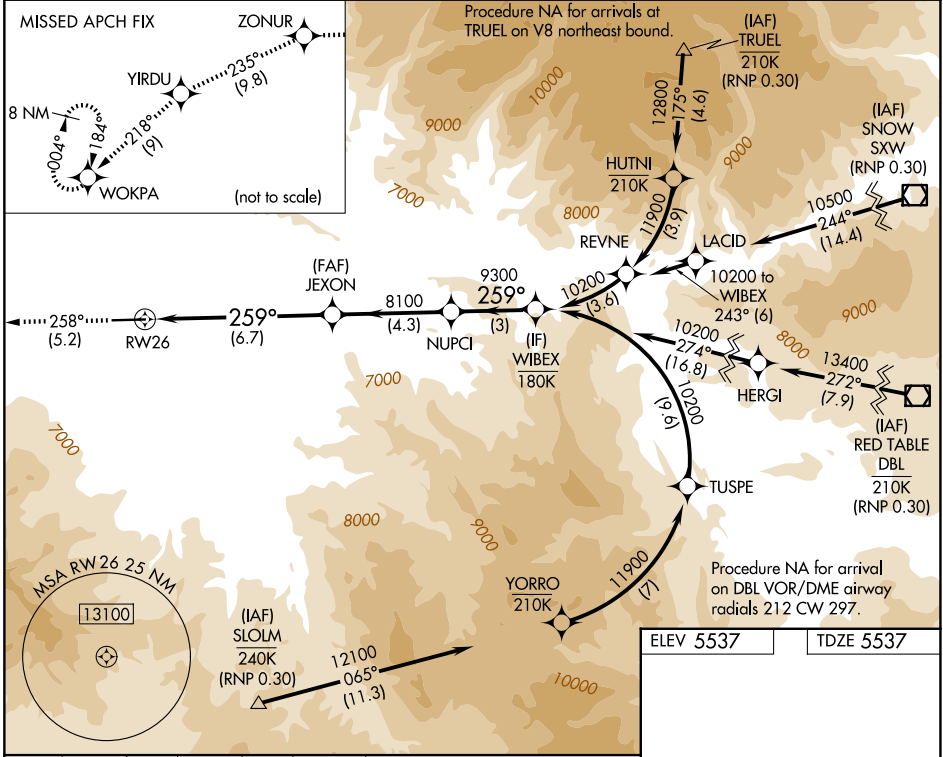
**⚠** For uncompensated Baro-VNAV systems, procedure NA below -21°C or above 35°C. Inop table does not apply.

**🌃** -13°C When VGSI inop, procedure NA at night.

**ODALS**

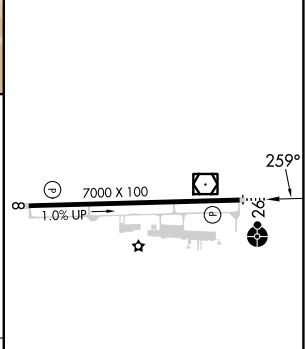
MISSED APPROACH: Climb to 14000 on track 258° to ZONUR and on track 235° to YIRDU and on track 218° to WOKPA and hold, continue climb-in-hold to 14000.

ASOS <b>135,275</b>	DENVER CENTER <b>134.95 327.075</b>	UNICOM <b>122.8 (CTAF)</b>
------------------------	--	-------------------------------



14000	ZONUR	YIRDU	WOKPA	WIBEX
tr 258°		tr 235°	tr 218°	
	JEXON	NUPCI	WIBEX	
	8100	9300	10200	
	8100			
	6.7 NM	4.3 NM	3 NM	

ELEV 5537	TDZE 5537
-----------	-----------



CATEGORY	A	B	C	D
RNP 0.30 DA		6395-2½	858 (900-2½)	

**AUTHORIZATION REQUIRED**

HIRL Rwy 8-26

REIL Rwy 8

SW-1, 09 JUL 2026 to 06 AUG 2026

SW-1, 09 JUL 2026 to 06 AUG 2026