

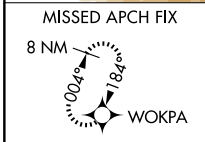
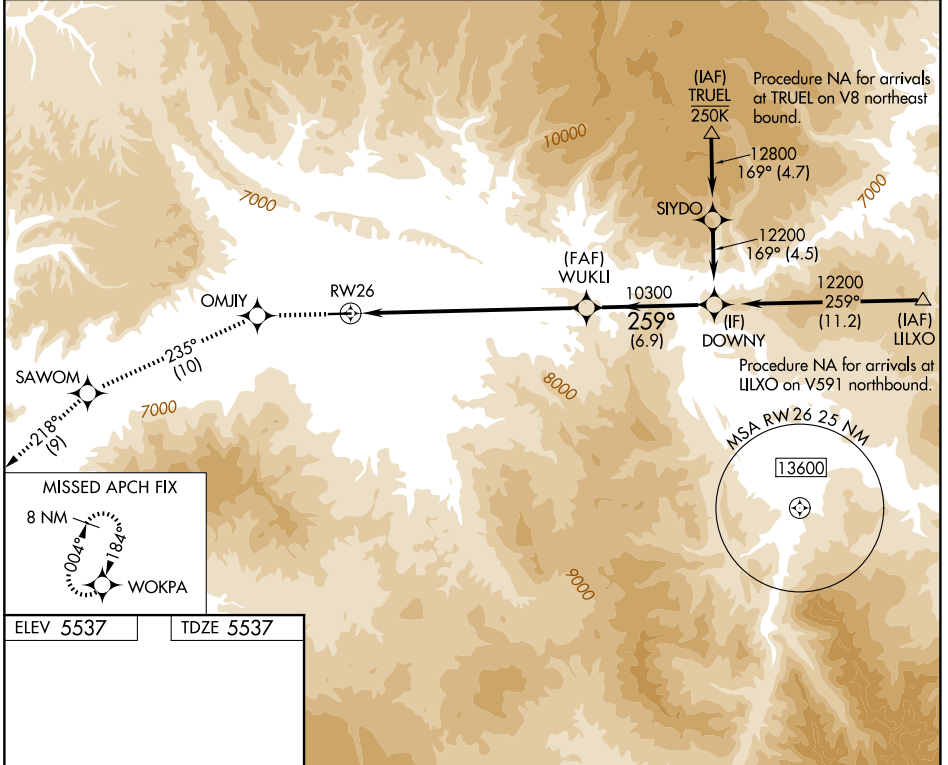
WAAS CH 93708 W26A	APP CRS 259°	Rwy Ldg TDZE Apt Elev	7000 5537 5537
--	------------------------	-----------------------------	---

RNAV (GPS) X RWY 26

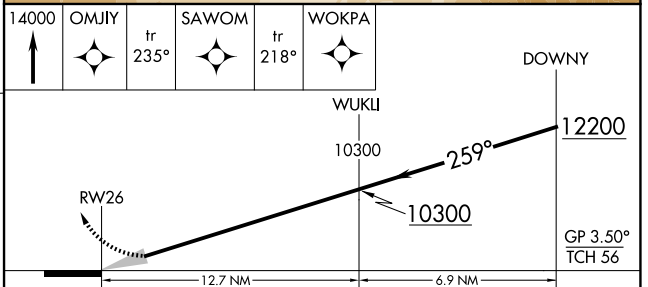
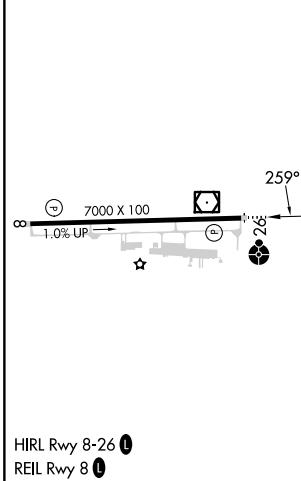
RIFLE GARFIELD COUNTY(R.I.L)

RNP APCH - GPS.	ODALS	MISSED APPROACH: Climb to 14000 direct OMJIY and on track 235° to SAWOM and on track 218° to WOKPA and hold, continue climb-in-hold to 14000. Missed approach requires a minimum climb gradient of 290 feet per NM to 9600 feet; if unable to meet climb gradient, see RNAV (GPS) W RWY 26.
NA For inop ALS, increase LPV all Cats visibility to 2 1/2 SM. -13°C		

ASOS 135.275	DENVER CENTER 134.95 327.075	UNICOM 122.8 (CTAF) 0
------------------------	--	---------------------------------



ELEV 5537	TDZE 5537
-----------	-----------



CATEGORY	A	B	C	D
LPV DA	6300-2		763 (800-2)	

SW-1, 09 JUL 2026 to 06 AUG 2026

SW-1, 09 JUL 2026 to 06 AUG 2026