

APP CRS	Rwy Ldg	7000
068°	TDZE	5498
	Apt Elev	5537

RNAV (GPS) Y RWY 8

RIFLE GARFIELD COUNTY (R.I.L)

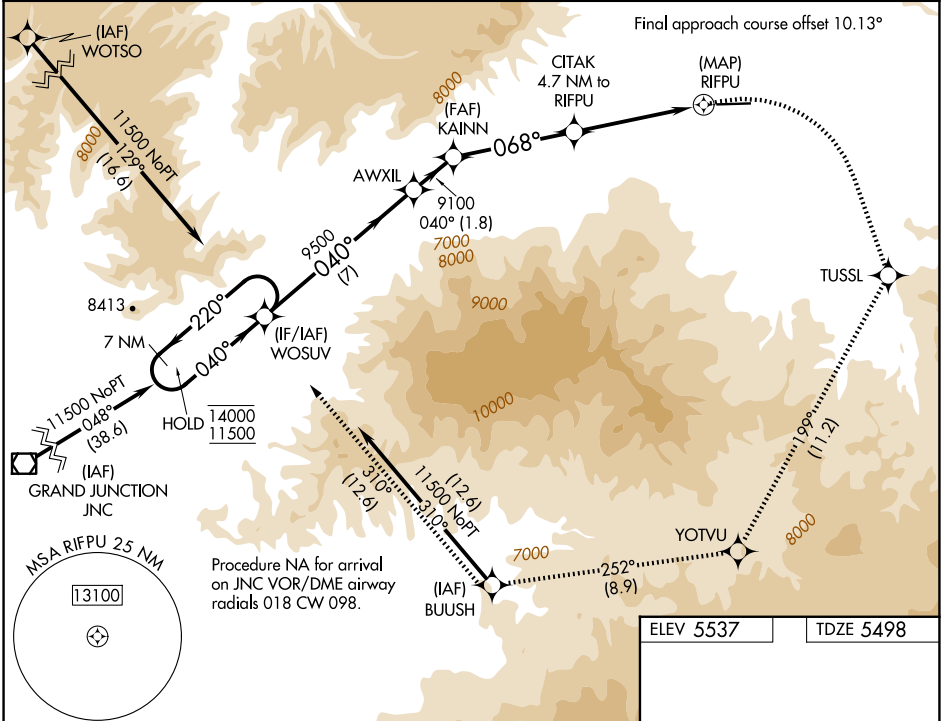
RNP APCH - GPS.

⚠ Circling NA south of Rwy 8-26 at night.

⚠ -13°C

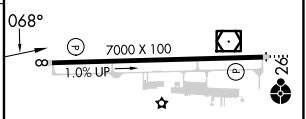
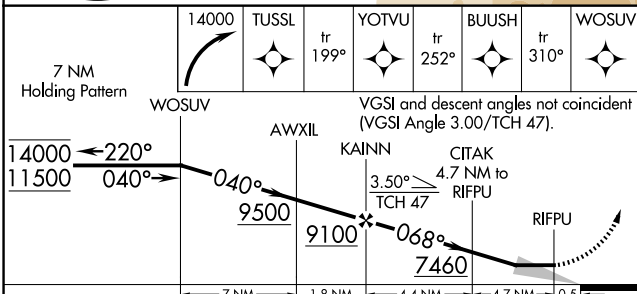
MISSED APPROACH: Climbing right turn to 14000 direct TUSSL and on track 199° to YOTVU and on track 252° to BUUSH and on track 310° to WOSUV and hold, continue climb-in-hold to 14000.

ASOS 135.275	DENVER CENTER 134.95 327.075	UNICOM 122.8 (CTAF) 0
------------------------	--	---------------------------------



Procedure NA for arrival on JNC VOR/DME airway radials 018 CW 098.

ELEV 5537	TDZE 5498
-----------	-----------



CATEGORY	A	B	C	D
LNVA MDA	7420-1¼ 1922 (1900-1¼)	7420-1½ 1922 (1900-1½)	7420-3 1922 (1900-3)	
CIRCLING	7420-1¼ 1883 (1900-1¼)	7420-1½ 1883 (1900-1½)	7420-3 1883 (1900-3)	8100-3 2563 (2600-3)

HIRL Rwy 8-26 0
REIL Rwy 8 0

SW-1, 09 JUL 2026 to 06 AUG 2026

SW-1, 09 JUL 2026 to 06 AUG 2026