

RNAV (GPS) RWY 26

FRANCISCO MANGLONA BORJA/TINIAN INTL (TNI)(PGWT)

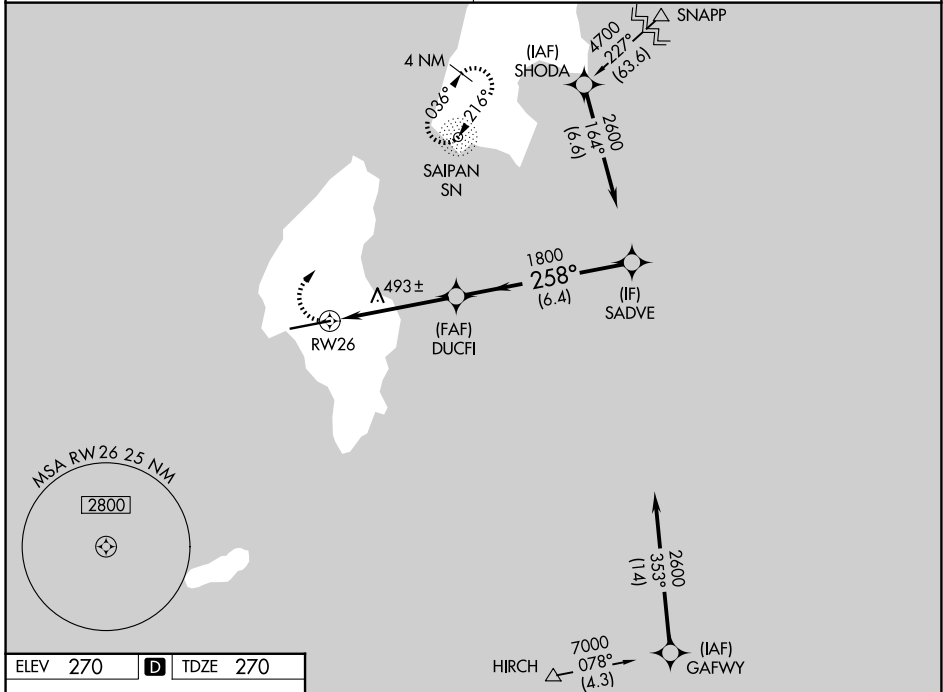
| | | |
|-------------|----------|-------------|
| APP CRS | Rwy Ldg | 8600 |
| 258° | TDZE | 270 |
| | Apt Elev | 270 |

RNP APCH.
 ▼ Obtain local altimeter setting on CTAF; when not received, use Saipan altimeter setting.
 ▲ altimeter setting. VDP NA when using Saipan altimeter setting.

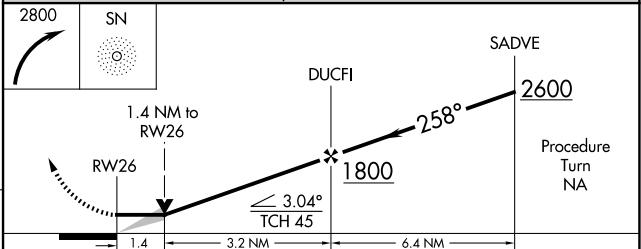
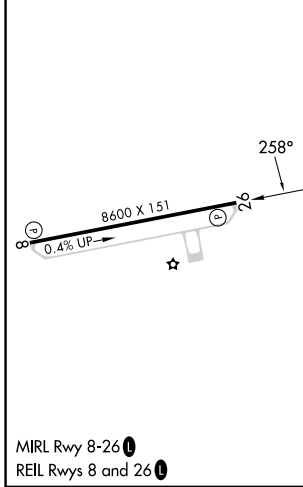
MISSED APPROACH: Climbing right turn to 2800 direct SN NDB and hold, continue climb-in-hold to 2800.

GUAM CERAP
118.4 290.5

SAIPAN RADIO
123.6 (CTAF)



| | | | | |
|------|-----|----------|------|-----|
| ELEV | 270 | D | TDZE | 270 |
|------|-----|----------|------|-----|



| CATEGORY | A | B | C | D |
|-----------------------------------|----------------------|----------------------|-------------------------|-------------------------|
| RNAV MDA | 760-1 | 490 (500-1) | 760-1¼ 490 (500-1¼) | 760-1½ 490 (500-1½) |
| CIRCLING | 760-1 490 (500-1) | 860-1 590 (600-1) | 1000-2 730 (800-2) | 1060-2½ 790 (800-2½) |
| SAIPAN ALTIMETER SETTING MINIMUMS | | | | |
| RNAV MDA | 780-1 | 510 (600-1) | 780-1½ | 510 (600-1½) |
| CIRCLING | 800-1 530 (600-1) | 900-1 630 (700-1) | 1040-2¼ 770 (800-2¼) | 1100-2¾ 830 (900-2¾) |

RNAV (GPS) RWY 26

PAC: 09 JUL 2026 to 03 SEP 2026

PAC: 09 JUL 2026 to 03 SEP 2026