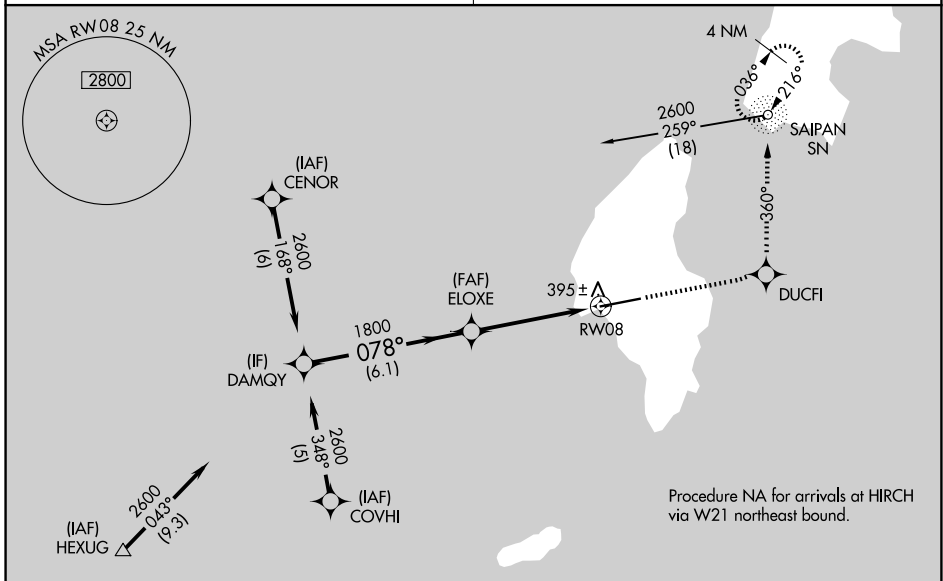


APP CRS	Rwy Ldg	8600
078°	TDZE	243
	Apt Elev	270

RNAV (GPS) RWY 8

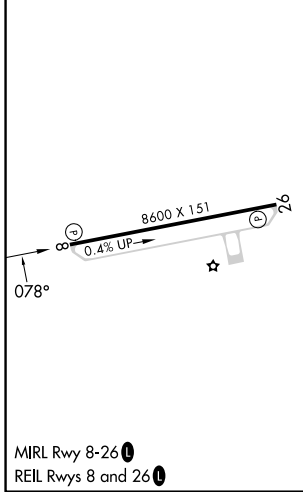
FRANCISCO MANGLONA BORJA/TINIAN INTL (TNI)(PGWT)

<p>RNP APCH</p> <p>▽ Obtain local altimeter setting on CTAF; when not received, use Saipan altimeter setting. ▲ VDP NA when using Saipan altimeter setting.</p>	<p>MISSED APPROACH: Climb to 2800 direct DUCFI and via 360° track to SN NDB and hold, continue climb-in-hold to 2800.</p>
<p>GUAM CERAP</p> <p>118.4 290.5</p>	<p>SAIPAN RADIO</p> <p>123.6 (CTAF) 0</p>

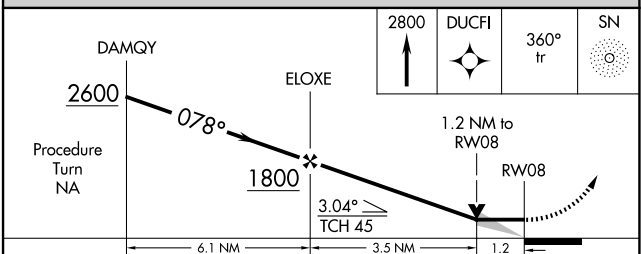


Procedure NA for arrivals at HEXUG via A221 northbound.

ELEV 270	D	TDZE 243
----------	----------	----------



MIRL Rwy 8-26 **0**
 REIL Rws 8 and 26 **0**



CATEGORY	A	B	C	D
RNAV MDA	660-1	417 (400-1)	660-1¼	417 (400-1¼)
CIRCLING	760-1 490 (500-1)	860-1 590 (600-1)	1000-2 730 (800-2)	1060-2½ 790 (800-2½)
SAIPAN ALTIMETER SETTING MINIMUMS				
RNAV MDA	680-1	437 (500-1)	680-1¼ 437 (500-1¼)	680-1½ 437 (500-1½)
CIRCLING	800-1 530 (600-1)	900-1 630 (700-1)	1040-2¼ 770 (800-2¼)	1100-2¾ 830 (900-2¾)

PAC: 09 JUL 2026 to 03 SEP 2026

PAC: 09 JUL 2026 to 03 SEP 2026