

VOR/DME SCB <b>111.0</b> Chan <b>47</b>	APP CRS <b>341°</b>	Rwy Ldg TDZE <b>4200</b> <b>1320</b> Apt Elev <b>1325</b>
---	------------------------	--

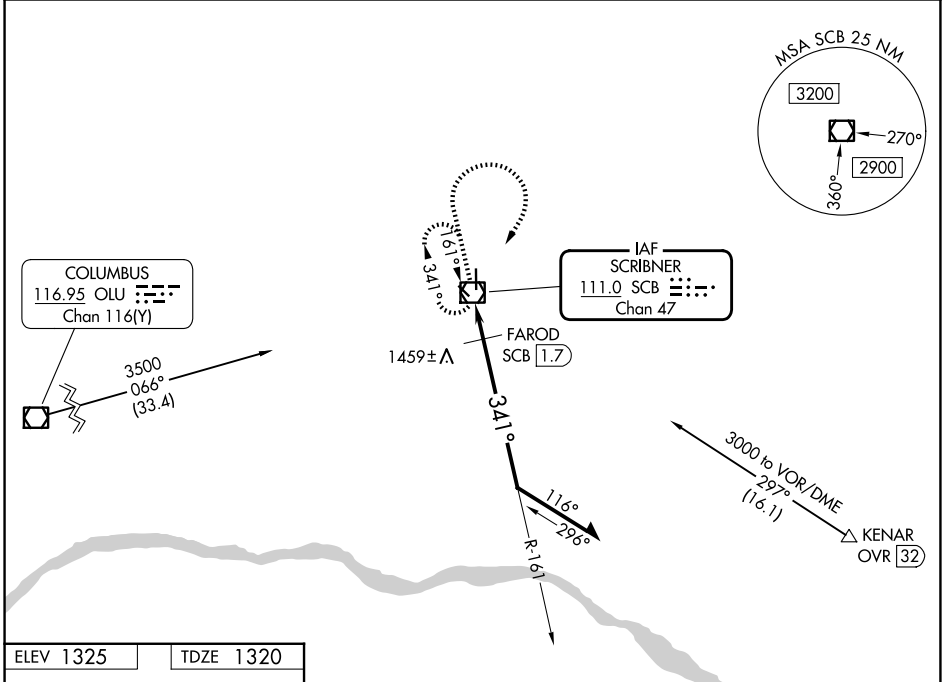
# VOR RWY 35

SCRIBNER STATE (SCB)

**⚠ NA** Circling Rwy 17 NA at night. Use FET altimeter setting; when not received, use AHQ altimeter setting and increase all MDAs 40 feet.

**MISSED APPROACH:** Climb to 3000 then right turn direct SCB VOR/DME and hold.

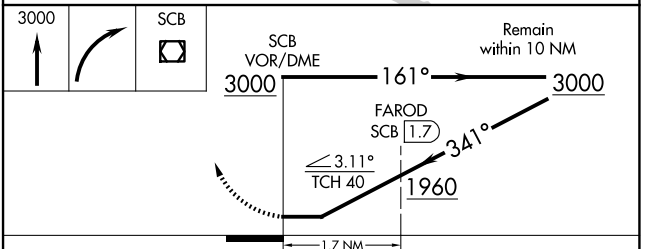
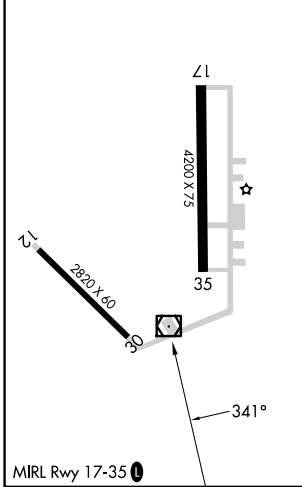
FET AWOS-3 <b>121.275</b>	OMAHA APP CON <b>135.875 354.05</b>	CTAF <b>122.9</b>
------------------------------	--	----------------------



NC-2, 09 JUL 2026 to 06 AUG 2026

NC-2, 09 JUL 2026 to 06 AUG 2026

ELEV 1325	TDZE 1320
-----------	-----------



CATEGORY	A	B	C	D
S-35	1960-1	640 (700-1)		NA
CIRCLING	1960-1	635 (700-1)		NA
<b>FAROD FIX MINIMUMS</b>				
S-35	1800-1	480 (500-1)		NA
CIRCLING	1900-1	575 (600-1)		NA