



# Burbank Environmental Assessment Supplemental Graphics

Proposed Alternative A Locations for SLAPP and OROSZ  
Overlaid on a Street Map



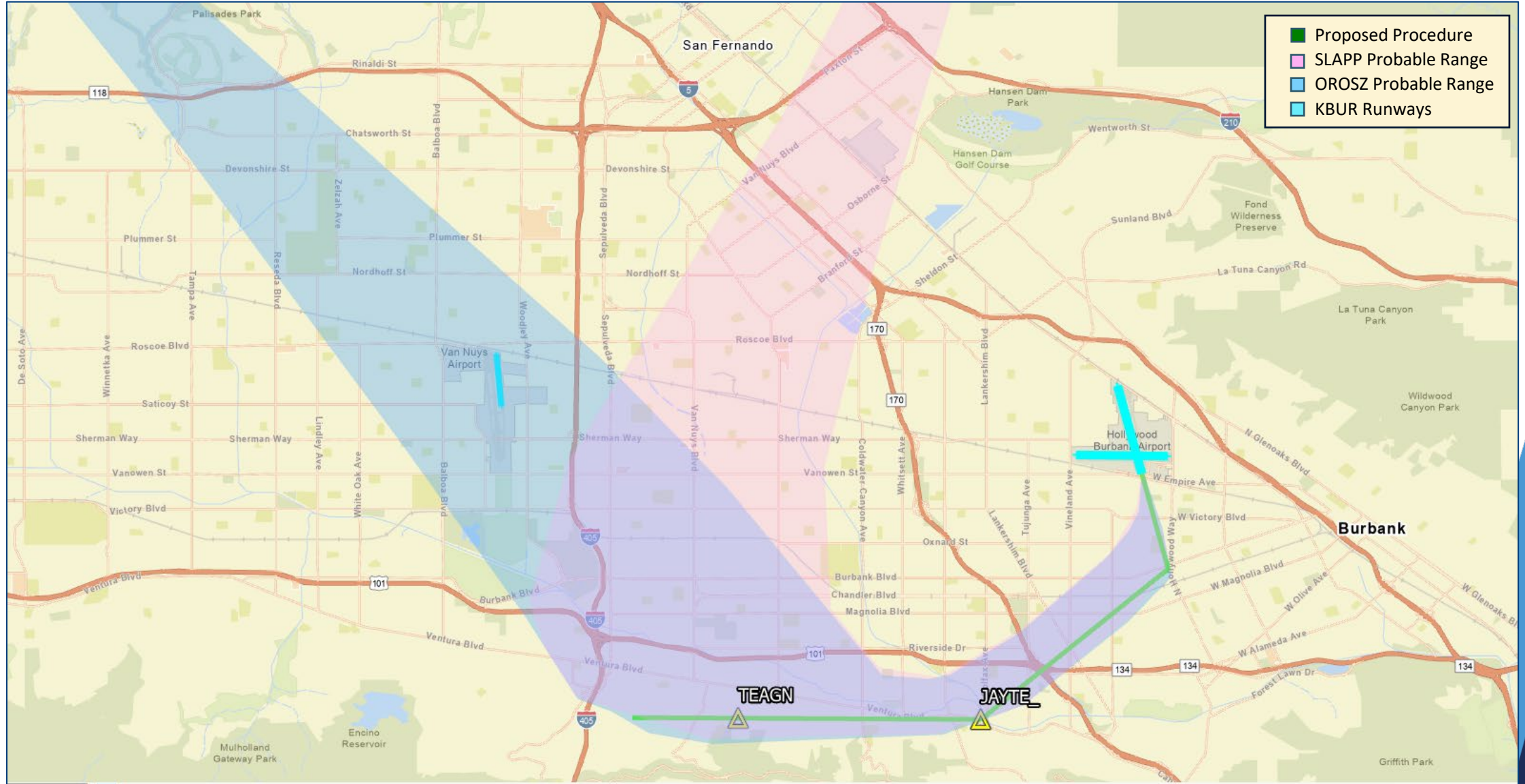
**Federal Aviation  
Administration**

February 22, 2024

# Proposed Waypoints for KBUR's SLAPP and OROSZ

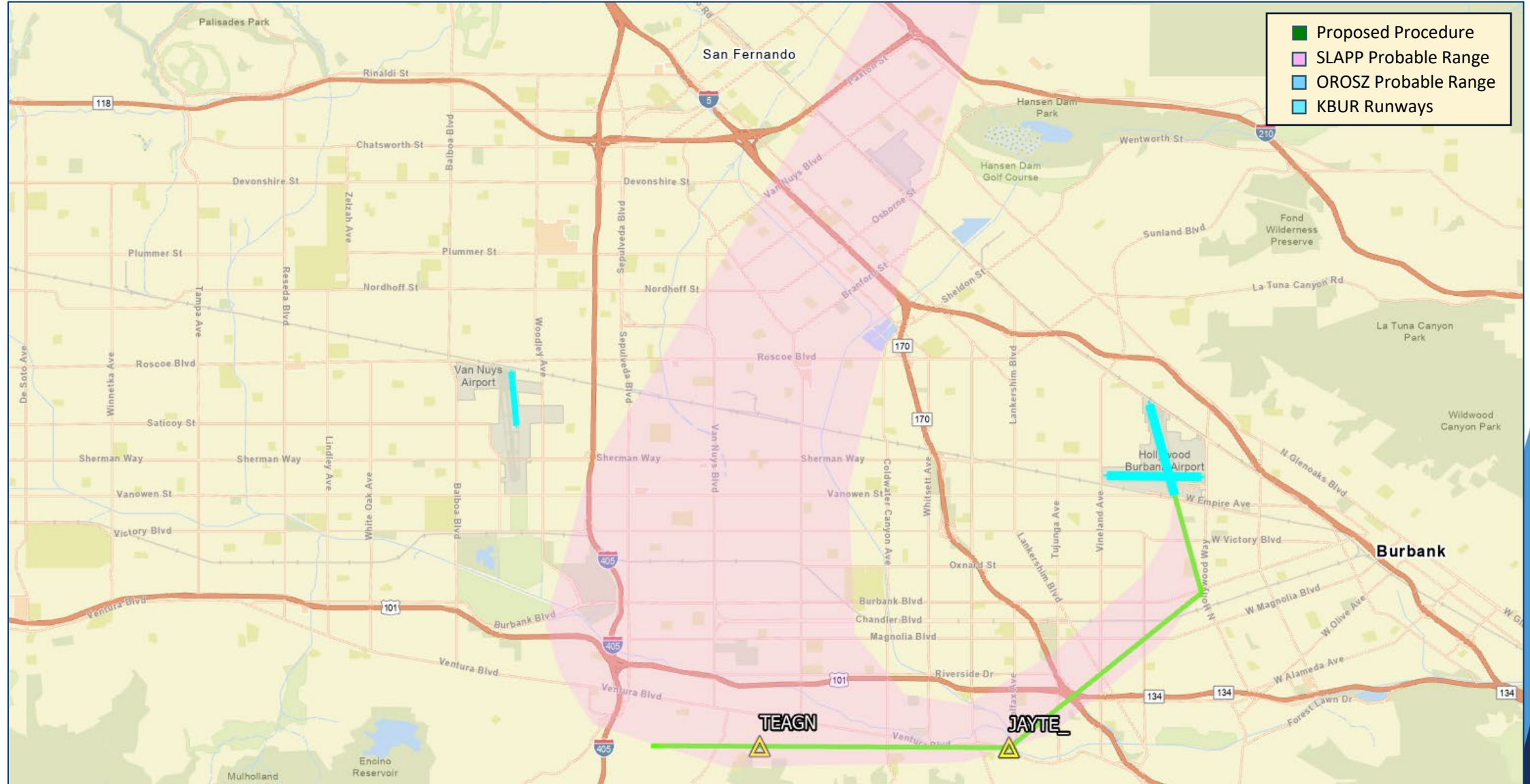
- The following seven slides contain depictions of Alternative A's proposed SLAPP and OROSZ with JAYTE and TEAGN waypoints (WP) and the general flight procedure path.
- The blue and pink areas represent estimated flight paths when considering variables such as traffic, aircraft characteristics, pilotage, weather, etc. These areas are an estimate only since we would not know more precise flight paths until there are actual tracks from different aircraft types under contrasting conditions.
- Slides 6 – 8 are zoomed in on portions of the proposed procedure.
- The final slide has one day of the current procedure's flight tracks (January 2, 2024) with the proposed Alternative A procedure and probable flight areas.
- Note: The Alternative B proposal uses the existing procedure designs with an increased climb gradient and no other changes to the procedure track; as most aircraft already meet or exceed the proposed Alternative B increased climb gradient, the expected flight paths for Alternative B would be very similar to the existing departure flight tracks.

# Proposed Alternative A WPs for KBUR





# Proposed Alternative A WPs for SLAPP

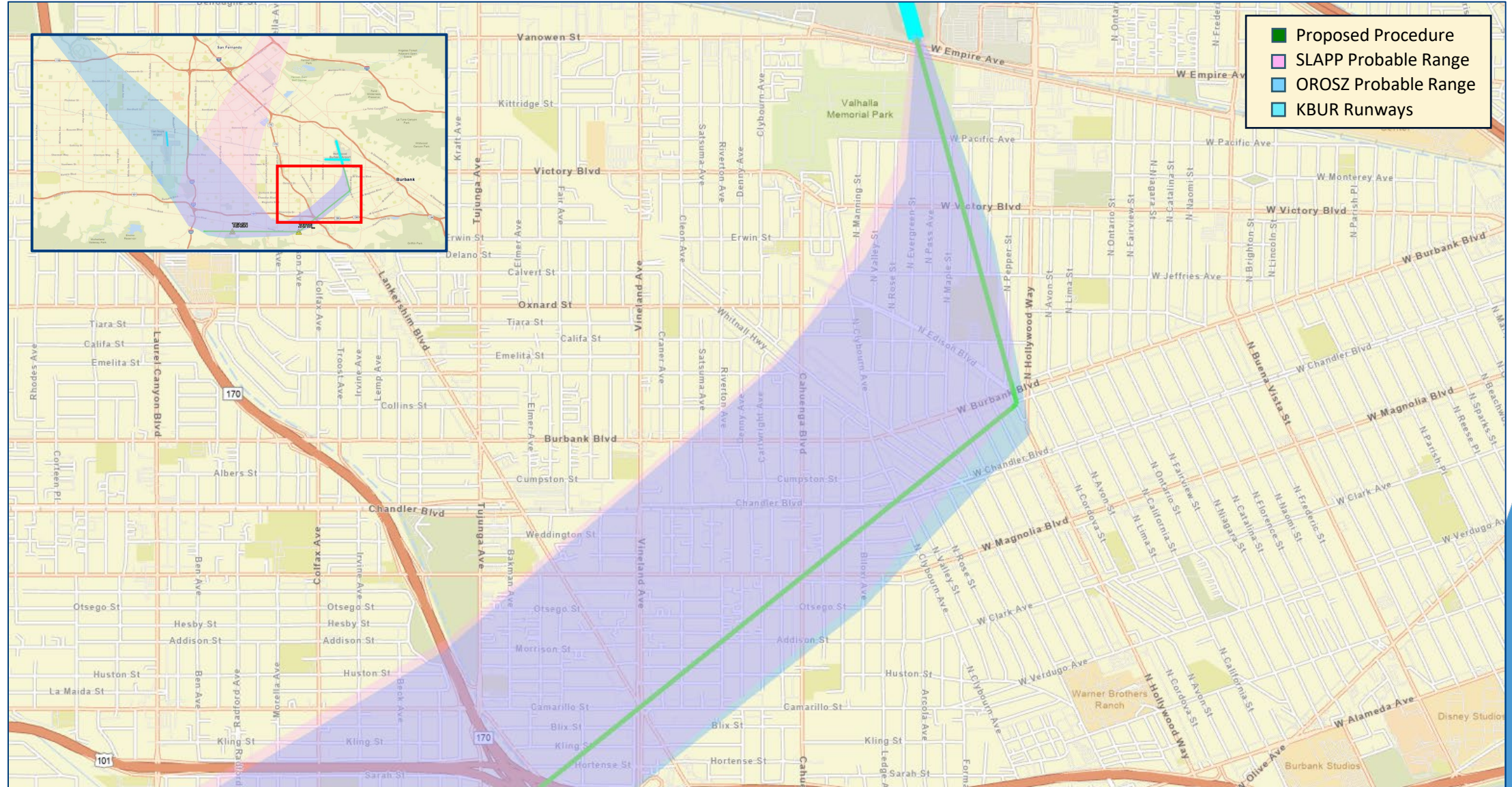


# Proposed Alternative A WPs for OROSZ



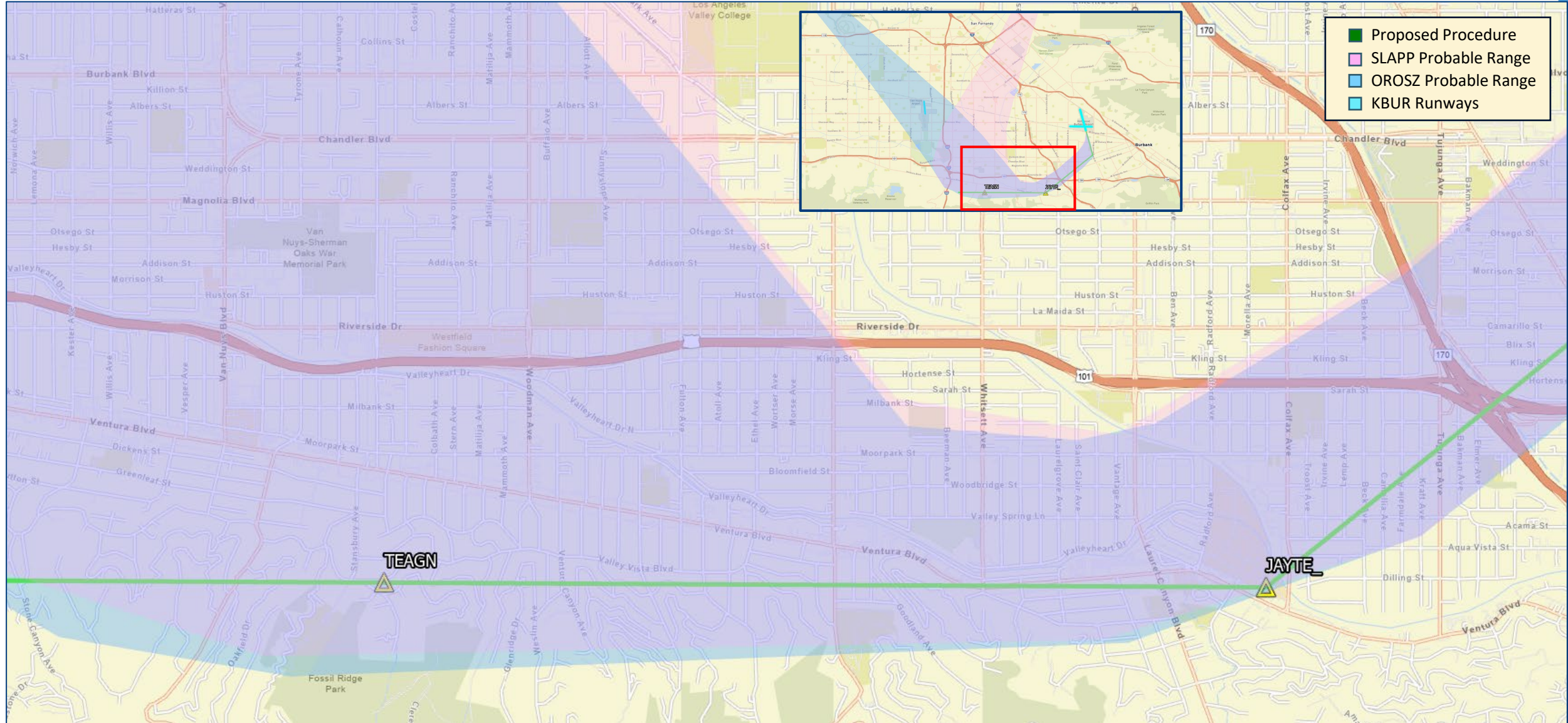


# Proposed Alternative A Zoomed in First Portion





# Proposed Alternative A Zoomed in Second Portion





The map displays the Van Nuys area with various streets and landmarks. Key features include:

- Legend:**
  - Proposed Procedure (Green line)
  - SLAPP Probable Range (Pink area)
  - OROSZ Probable Range (Blue area)
  - KBUR Runways (Cyan area)
- Map Labels:**
  - Van Nuys
  - Woodley Lakes Golf Course
  - Burbank Blvd
  - Chandler Blvd
  - Magnolia Blvd
  - Riverside Dr
  - Ventura Blvd
  - Van Nuys Blvd
  - Woodman Ave
  - Whittier Ave
  - Laurel Canyon Blvd
  - 170
  - Los Angeles Valley College
  - Woodley Avenue Park
  - Sepulveda Basin Wildlife Area
  - Van Nuys Sherman Oaks War Memorial Park
  - Fossil Ridge Park
- Inset Map:** Shows the location of Van Nuys within the Los Angeles area, with a red box highlighting the specific area shown in the main map.
- TEAGN and JAYL:** Markers for TEAGN and JAYL are shown at the bottom of the map, with a green line connecting them.



# Proposed Alternative A WPs and Current Procedure Flight Tracks

