

## **M.4 AZGFD Database Report**

*This page intentionally left blank.*

## Arizona Environmental Online Review Tool Report



*Arizona Game and Fish Department Mission  
To conserve Arizona's diverse wildlife resources and  
manage for safe, compatible outdoor recreation  
opportunities for current and future generations.*

**Based on the project type entered, no further review is needed.** Please review the entire report for project type and/or species recommendations for the location information entered. If you have questions about the project/species specific recommendations, please contact the Project Evaluation Program directly at [PEP@azgfd.gov](mailto:PEP@azgfd.gov).

**Project Name:**

Phoenix Area FAA Modernization Project

**Project Type:**

Transportation & Infrastructure, Airports, Maintenance on existing runways, taxiways, terminals/concourses, runway obstruction clearance, facilities, beacons, control towers, storm water run off controls, de-icing, fuel depots

**Project ID:**

HGIS-27399

**Project Description:**

The Project seeks to optimize aircraft arrival and departure procedures in the Phoenix, Arizona area by employing advanced navigational technology. The procedures designed for the Project would be used by aircraft operating under Instrument Flight Rules (IFR) at the 10 Study Airports: Phoenix Sky Harbor International Airport, Buckeye Municipal Airport, Chandler Municipal Airport, Phoenix Deer Valley Airport, Falcon Field Airport, Glendale Regional Airport, Phoenix Goodyear Airport, Mesa Gateway Airport, Stellar Airpark, and Scottsdale Airport. The Project would not increase the frequency or number of aircraft operations, compared to currently projected forecasts for the Study Airports. The Project does not involve new construction or other ground-disturbing activities. The Project consists of a coordinated set of arrival, departure, and approach procedures. Individual procedures were initially designed and screened on their own merits to ensure compliance with FAA design criteria and achieve the Project purpose of improving efficiency, enhancing safety, and reducing operational delays in the Phoenix area airspace. Procedures that did not meet safety, feasibility, or operational objectives were not carried forward. While individual procedures may provide localized operational benefits, the Greater Phoenix terminal airspace functions as an interconnected system. For this reason, procedures were also evaluated collectively to assess how they interact with one another across multiple airports, traffic flows, and airspace sectors. Evaluating the procedures as a coordinated package allows the FAA to assess overall system performance, identify potential interactions between arrival and departure flows, and avoid introducing unintended operational effects elsewhere in the airspace. To evaluate potential impacts of the Project, the FAA has established a General Study Areas (totaling approximately 15,700 square miles) to account for changes in aircraft routing that would occur below 10,000 feet above ground level (AGL). In addition, since sensitive resources, such as national parks and wildlife refuges, where other noise is very low, are present in or near the

General Study Area, a Supplemental Study Area, extending up to 18,000 feet AGL has also been identified and surrounds the General Study Area. The Supplemental Study Area totals approximately 45,000 square miles. It is anticipated that the Project will be implemented in 2027.

**Contact Person:**

Kim Threlfall

**Organization:**

HMMH

**On Behalf Of:**

FAA

**Disclaimer:**

1. This Environmental Review is based on the project study area that was entered. The report must be updated if the project study area, location, or the type of project changes.
2. This is a preliminary environmental screening tool. It is not a substitute for the potential knowledge gained by having a biologist conduct a field survey of the project area. This review is also not intended to replace environmental consultation (including federal consultation under the Endangered Species Act), land use permitting, or the Departments review of site-specific projects.
3. The Departments Heritage Data Management System (HDMS) data is not intended to include potential distribution of special status species. Arizona is large and diverse with plants, animals, and environmental conditions that are ever changing. Consequently, many areas may contain species that biologists do not know about or species previously noted in a particular area may no longer occur there. HDMS data contains information about species occurrences that have actually been reported to the Department. Not all of Arizona has been surveyed for special status species, and surveys that have been conducted have varied greatly in scope and intensity. Such surveys may reveal previously undocumented population of species of special concern.
4. Arizona Wildlife Conservation Strategy (AWCS), specifically Species of Greatest Conservation Need (SGCN), represent potential species distribution models for the State of Arizona which are subject to ongoing change, modification and refinement. The status of a wildlife resource can change quickly, and the availability of new data will necessitate a refined assessment.

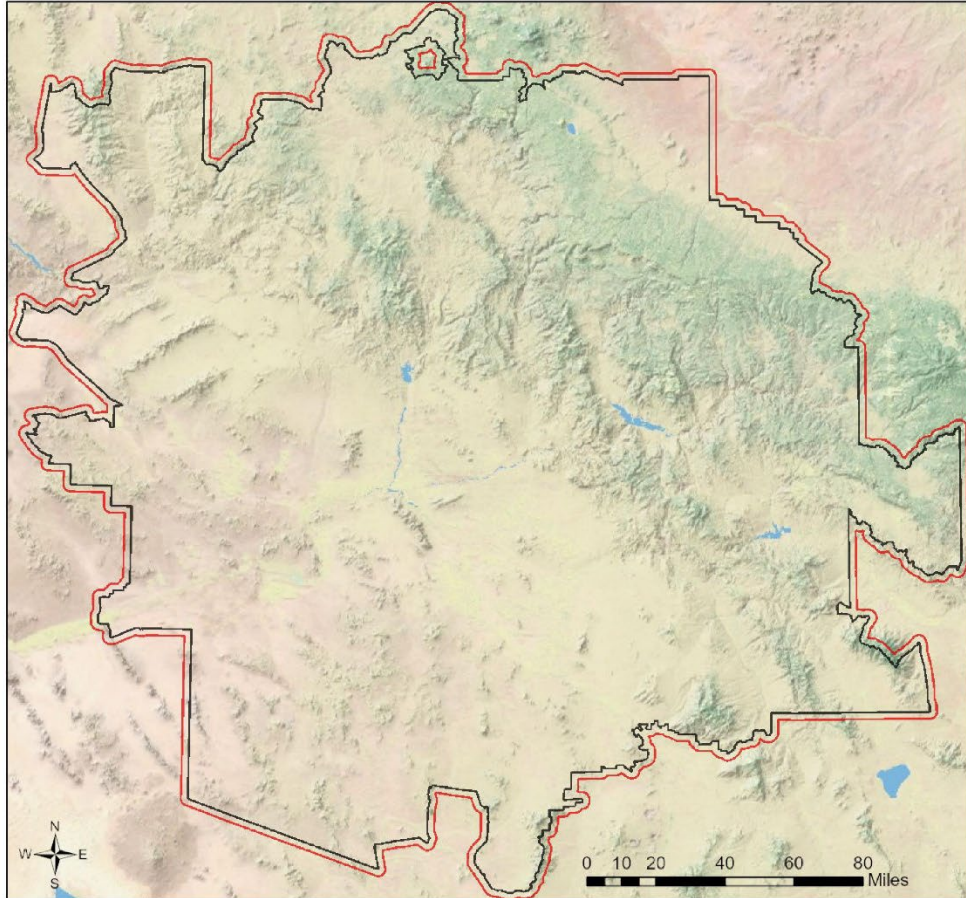
**Locations Accuracy Disclaimer:**

Project locations are assumed to be both precise and accurate for the purposes of environmental review. The creator/owner of the Project Review Report is solely responsible for the project location and thus the correctness of the Project Review Report content.

**Recommendations Disclaimer:**

1. The Department is interested in the conservation of all fish and wildlife resources, including those species listed in this report and those that may have not been documented within the project vicinity as well as other game and nongame wildlife.
2. Recommendations have been made by the Department, under authority of Arizona Revised Statutes Title 5 (Amusements and Sports), 17 (Game and Fish), and 28 (Transportation).
3. Potential impacts to fish and wildlife resources may be minimized or avoided by the recommendations generated from information submitted for your proposed project. These recommendations are preliminary in scope, designed to provide early considerations on all species of wildlife.
4. Making this information directly available does not substitute for the Department's review of project proposals, and should not decrease our opportunity to review and evaluate additional project information and/or new project proposals.
5. Further coordination with the Department requires the submittal of this Environmental Review Report with a cover letter and project plans or documentation that includes project narrative, acreage to be impacted, how construction or project activity(s) are to be accomplished, and project locality information (including site map). Once AGFD had received the information, please allow 30 days for completion of project reviews. Send requests to:  
**Project Evaluation Program, Habitat Branch**  
**Arizona Game and Fish Department**  
**5000 West Carefree Highway**  
**Phoenix, Arizona 85086-5000**  
**Phone Number: (623) 236-7600**  
**Fax Number: (623) 236-7366**  
**Or**  
[PEP@azgfd.gov](mailto:PEP@azgfd.gov)
6. Coordination may also be necessary under the National Environmental Policy Act (NEPA) and/or Endangered Species Act (ESA). Site specific recommendations may be proposed during further NEPA/ESA analysis or through coordination with affected agencies.

### Phoenix Area FAA Modernization Project USA Topo Basemap With Locator Map



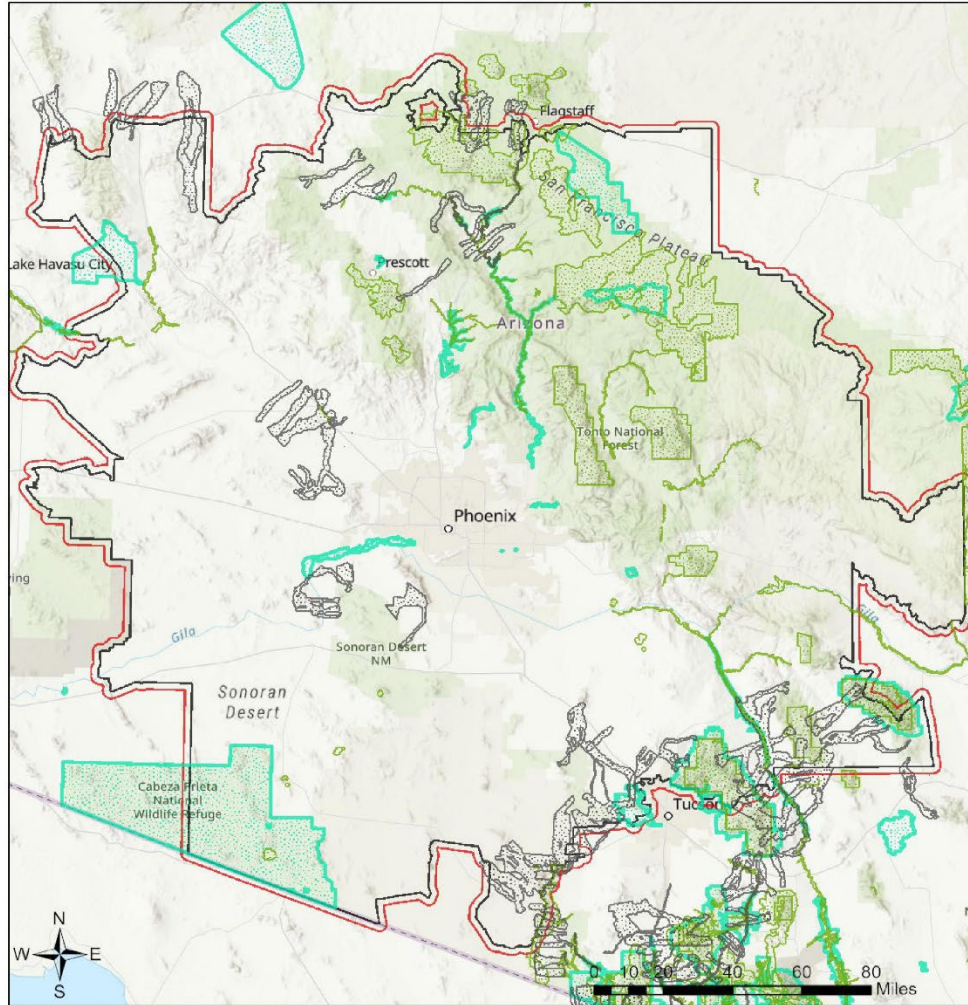
- Buffered Project Boundary
- Project Boundary

Project Size (acres): 28,786,497.82  
Lat/Long (DD): 33.5931 / -111.9591  
County(s): Apache; Cochise; Coconino; Gila +  
AGFD Region(s): Flagstaff; Kingman; Mesa; Pinetop +  
Township/Range(s): T10.5N, R13E +  
USGS Quad(s): ADAMS MESA; AGUA CALIENTE +

County of Yavapai, Esri, TomTom, Garmin, FAO, NOAA, USGS, EPA, USFWS  
Copyright:© 2013 National Geographic Society, i-cubed  
Esri, USGS



### Phoenix Area FAA Modernization Project Important Areas

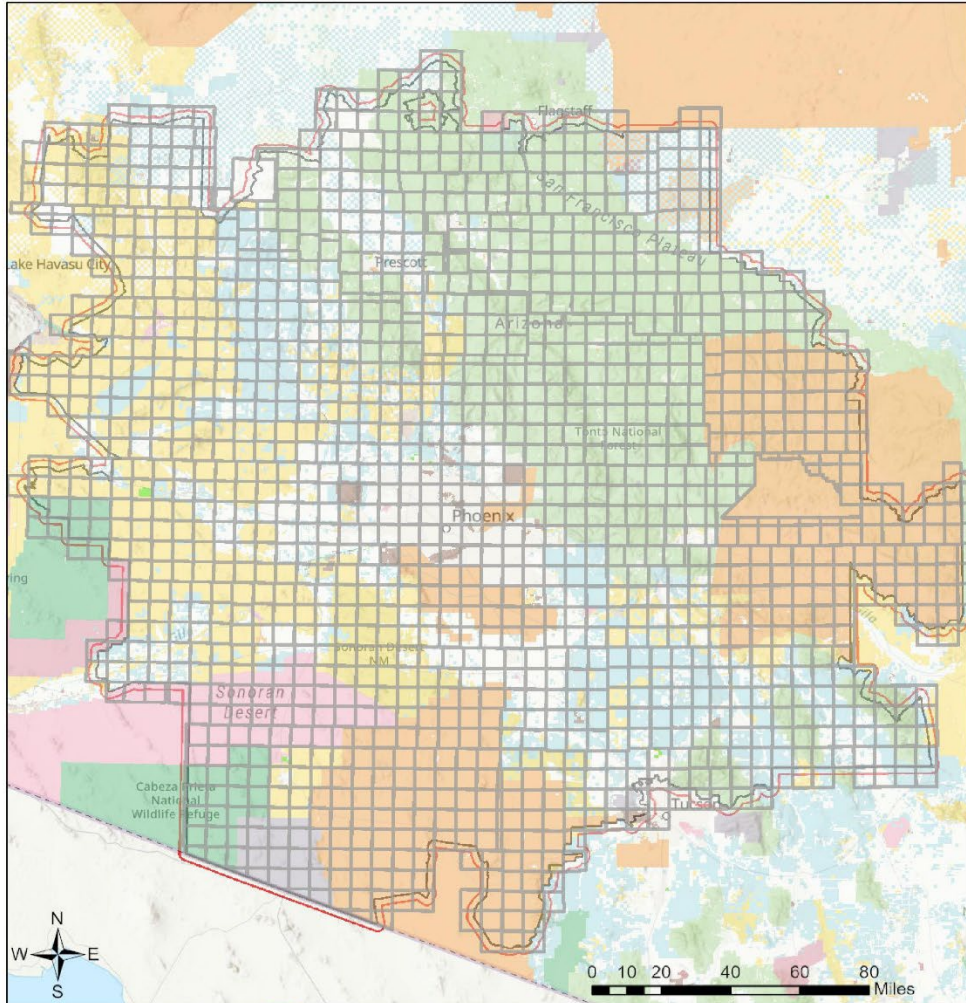


-  Buffered Project Boundary
-  Project Boundary
-  Important Bird Areas
-  Critical Habitat
-  Wildlife Connectivity

Project Size (acres): 28,786,497.82  
Lat/Long (DD): 33.5931 / -111.9591  
County(s): Apache; Cochise; Coconino; Gila +  
AGFD Region(s): Flagstaff; Kingman; Mesa; Pinetop +  
Township/Range(s): T10.5N, R13E +  
USGS Quad(s): ADAMS MESA; AGUA CALIENTE +

Esri, TomTom, Garmin, FAO, NOAA, USGS, Bureau of Land Management, EPA, NPS, USFWS  
Esri, USGS

### Phoenix Area FAA Modernization Project Township/Ranges and Land Ownership



- Buffered Project Boundary
- Project Boundary
- AZ Game & Fish Dept.
- BLM
- BOR
- Indian Res.
- Military

- Mixed/Other
- National Park/Mon. Private
- State & Regional Parks
- State Trust
- US Forest Service
- Wildlife Area/Refuge
- Township/Ranges

Project Size (acres): 28,786,497.82  
 Lat/Long (DD): 33.5931 / -111.9591  
 County(s): Apache; Cochise; Coconino; Gila +  
 AGFD Region(s): Flagstaff; Kingman; Mesa; Pinetop +  
 Township/Range(s): T10.5N, R13E +  
 USGS Quad(s): ADAMS MESA; AGUA CALIENTE +

Esri, TomTom, Garmin, FAO, NOAA, USGS, Bureau of Land Management, EPA, NPS, USFWS, Esri, USGS

Arizona Game and Fish Department  
Project ID: HGIS-27399

project\_report\_phoenix\_area\_faa\_modernizat\_95692\_98667.pdf  
Review Date: 2/6/2026 09:11:09 AM

**Special Status Species Documented within 2 Miles of Project Vicinity**

Scientific Name	Common Name	FWS	USFS	BLM	NPL	SGCN
<i>Abutilon parishii</i>	Pima Indian Mallow		S	S	SR	
<i>Actaea arizonica</i>	Arizona Bugbane	CCA	S		HS	
<i>Aechmophorus clarkii</i>	Clark's Grebe					2
<i>Aechmophorus occidentalis</i>	Western Grebe					2
<i>Agathon arizonicus</i>	Netwing Midge		S			
<i>Agave delamateri</i>	Tonto Basin Agave		S		HS	
<i>Agave mckelveyana</i>	Mckelvey Agave				SR	
<i>Agave murpheyi</i>	Hohokam Agave		S	S	HS	
<i>Agave phillipsiana</i>	Phillips Agave		S		HS	
<i>Agave schottii</i> var. <i>treleasei</i>	Trelease Agave		S		HS	
<i>Agave toumeyana</i> var. <i>bella</i>	Toumey Agave				SR	
<i>Agave verdensis</i>	Sacred Mountain Agave		S		SR	
<i>Agave x ajoensis</i>	Ajo Agave				SR	
<i>Agave x arizonica</i>	Arizona agave				HS	
<i>Agave yavapaiensis</i>	Page Springs Agave		S		SR	
<i>Agelaius phoeniceus</i>	Red-winged Blackbird					2
<i>Agosia chrysogaster chrysogaster</i>	Gila Longfin Dace			S		2
<i>Agosia chrysogaster</i>	Longfin Dace			S		2
<i>Allium bigelovii</i>	Bigelow Onion				SR	
<i>Allium gooddingii</i>	Goodding Onion	CCA	S		HS	
<i>Allium rhizomatum</i>	Redflower Onion				SR	
<i>Ammospermophilus harrisi</i>	Harris' Antelope Squirrel					2
<i>Amoreuxia gonzalezii</i>	Saiya		S		HS	
<i>Amsonia kearneyana</i>	Kearney Blue-star	LE		S	HS	
<i>Anarhynchus nivosus nivosus</i>	Western Snowy Plover					2
<i>Anaxyrus microscaphus</i>	Arizona Toad	UR		S		2
<i>Anaxyrus retiformis</i>	Sonoran Green Toad			S		2
<i>Anodonta californiensis</i>	California Floater		S			1
<i>Anthus rubescens</i>	American Pipit					2
<i>Antilocapra americana americana</i>	American Pronghorn					2
<i>Antilocapra americana sonoriensis</i>	Sonoran Pronghorn	LE,XN		S		1
<i>Antrostomus ridgwayi</i>	Buff-collared Nightjar		S			2
<i>Aphelocoma woodhouseii</i>	Woodhouse's Scrub-Jay					2
<i>Aquila chrysaetos</i>	Golden Eagle	BGA		S		2
<i>Aquila chrysaetos</i>	Golden Eagle			S		2
<i>Aquilegia desertorum</i>	Mogollon Columbine				SR	
<i>Argia sabino</i>	Sabino Canyon Dancer	UR	S			
<i>Asio otus</i>	Long-eared Owl					2
<i>Aspidoscelis arizonae</i>	Little Striped Whiptail			S		

Arizona Game and Fish Department  
Project ID: HGIS-27399

project\_report\_phoenix\_area\_faa\_modernizat\_95692\_98667.pdf  
Review Date: 2/6/2026 09:11:09 AM

**Special Status Species Documented within 2 Miles of Project Vicinity**

Scientific Name	Common Name	FWS	USFS	BLM	NPL	SGCN
<i>Aspidoscelis sonorae</i>	Sonoran Spotted Whiptail					2
<i>Aspidoscelis stictogrammus</i>	Giant Spotted Whiptail		S			2
<i>Aspidoscelis xanthonotus</i>	Red-backed Whiptail		S			2
<i>Astragalus humistratus</i> var. <i>crispulus</i>	Villous Ground-cover Milkvetch		S			
<i>Astragalus newberryi</i> var. <i>aquarii</i>	Aquarius Milkvetch			S		
<i>Astragalus xiphoides</i>	Gladiator Milkvetch				SR	
<i>Astur atricapillus</i>	American Goshawk		S	S		2
<i>Athene cunicularia hypugaea</i>	Western Burrowing Owl		S	S		2
<i>Auriparus flaviceps</i>	Verdin					2
<b>Bat Colony</b>						
<i>Berberis harrisoniana</i>	Kofa Mountain Barberry			S		
<i>Bicellonycha wickershamorum piceum</i>	Gila Southwest Spring Firefly	UR				
<i>Bicellonycha wickershamorum wickershamorum</i>	Southwest Spring Firefly	UR				
<i>Bombus morrisoni</i>	Morrison's Bumble Bee	UR				
<i>Bombus pensylvanicus</i>	American Bumble Bee	UR				
<i>Botaurus lentiginosus</i>	American Bittern					2
<i>Buteo regalis</i>	Ferruginous Hawk			S		2
<i>Buteo swainsoni</i>	Swainson's Hawk					2
<i>Buteogallus anthracinus</i>	Common Black Hawk					2
<i>Calamospiza melanocorys</i>	Lark Bunting					2
<i>Callipepla squamata</i>	Scaled Quail					2
<i>Callospermophilus lateralis</i>	Golden-mantled Ground Squirrel					2
<i>Calypte costae</i>	Costa's Hummingbird					2
<i>Camptostoma imberbe</i>	Northern Beardless-Tyrannulet		S			2
<i>Campylorhynchus brunneicapillus</i>	Cactus Wren					2
<i>Canis lupus baileyi</i>	Mexican Wolf	LE,XN		S		1
<i>Cardellina rubrifrons</i>	Red-faced Warbler					2
<i>Cardinalis sinuatus</i>	Pyrrhuloxia					2
<i>Carex chihuahuensis</i>	Chihuahuan Sedge		S			
<i>Carex ultra</i>	Cochise Sedge		S	S		
<i>Catharus guttatus</i>	Hermit Thrush					2
<i>Catharus ustulatus</i>	Swainson's Thrush					2
<i>Catostomus clarkii</i>	Desert Sucker		S	S		2
<i>Catostomus discobolus discobolus</i>	Bluehead Sucker	CCA		S		2
<i>Catostomus insignis</i>	Sonora Sucker		S	S		2
<i>Catostomus</i> sp. 3	Little Colorado Sucker	CCA	S	S		2
<i>Chaetodipus baileyi</i>	Bailey's Pocket Mouse					2

Arizona Game and Fish Department  
Project ID: HGIS-27399

project\_report\_phoenix\_area\_faa\_modernizat\_95692\_98667.pdf  
Review Date: 2/6/2026 09:11:09 AM

**Special Status Species Documented within 2 Miles of Project Vicinity**

Scientific Name	Common Name	FWS	USFS	BLM	NPL	SGCN
Charadrius vociferus	Killdeer					2
Chilomeniscus cinctus	Banded Sandsnake					2
Chionactis palarostris organica	Organ Pipe Shovel-nosed Snake					2
Choeronycteris mexicana	Mexican Long-tongued Bat		S	S		2
Chordeiles minor	Common Nighthawk					2
Chrysemys picta bellii	Western Painted Turtle					2
Chrysemys picta	Painted Turtle					2
Chrysothamnus molestus	Tusayan Rabbitbrush		S			
Cinclus mexicanus	American Dipper					2
Circus hudsonius	Northern Harrier					2
Cirsium mohavense	Mohave Thistle					SR
Cirsium parryi	Parry Thistle		S			SR
Clematis hirsutissima	Clustered Leather Flower		S			HS
Coccothraustes vespertinus	Evening Grosbeak					2
Coccyzus americanus	Yellow-billed Cuckoo (Western DPS)	LT	S	S		1
Colaptes chrysoides	Gilded Flicker			S		2
Columbina inca	Inca Dove					2
Contopus cooperi	Olive-sided Flycatcher					2
Contopus sordidulus	Western Wood-Pewee					2
Corvus cryptoleucus	Chihuahuan Raven					2
Corynorhinus townsendii pallescens	Pale Townsend's Big-eared Bat		S	S		1
Coryphantha scheeri var. robustispina	Pima Pineapple Cactus	LE		S		HS
Craugastor augusti cactorum	Western Barking Frog		S			2
Crotalus cerberus	Arizona Black Rattlesnake					2
Crotalus lepidus klauberi	Banded Rock Rattlesnake					1
Crotalus pricei	Twin-spotted Rattlesnake		S			1
Crotalus pyrrhus	Southwestern Speckled Rattlesnake					2
Crotalus tigris	Tiger Rattlesnake					2
Crotalus willardi willardi	Arizona Ridge-nosed Rattlesnake		S			1
Crotaphytus nebrius	Sonoran Collared Lizard					2
Cyanocitta stelleri	Steller's Jay					2
Cylindropuntia echinocarpa	Golden Cholla					SR
Cylindropuntia x kelvinensis	Kelvin Cholla					SR
Cylloepus parkeri	Parker's Cylloepus Riffle Beetle		S			
Cynanthus latirostris	Broad-billed Hummingbird		S			2
Cynomys gunnisoni	Gunnison's Prairie Dog			S		1
Cyprinodon eremus	Quitobaquito Pupfish	LE				1
Cyprinodon macularius	Desert Pupfish	LE		S		1
Cystopteris utahensis	Utah Bladder-fern					

Arizona Game and Fish Department  
Project ID: HGIS-27399

project\_report\_phoenix\_area\_faa\_modernizat\_95692\_98667.pdf  
Review Date: 2/6/2026 09:11:09 AM

**Special Status Species Documented within 2 Miles of Project Vicinity**

Scientific Name	Common Name	FWS	USFS	BLM	NPL	SGCN
<i>Danaus plexippus</i>	Monarch	PT		S		
<i>Dendragapus obscurus</i>	Dusky Grouse					2
<i>Dendrocygna autumnalis</i>	Black-bellied Whistling-Duck					2
<i>Desmodium metcalfei</i>	Metcalf's Tick-trefoil		S			
<i>Didelphis virginiana californica</i>	Mexican Opossum					2
<i>Dryobates arizonae</i>	Arizona Woodpecker		S			2
<i>Echinocactus horzonthalonius</i> var. <i>nicholii</i>	Nichol Turk's Head Cactus	LE		S	HS	
<i>Echinocereus arizonicus</i> ssp. <i>arizonicus</i>	Arizona Hedgehog Cactus	LE		S	HS	
<i>Echinocereus arizonicus</i> ssp. <i>nigrihorridispinus</i>	Black-spined Hedgehog Cactus					SR
<i>Echinocereus arizonicus</i>	Arizona Hedgehog Cactus	LE				SR
<i>Echinocereus engelmannii</i> var. <i>variegatus</i>	Echinocereus Hedgehog Cactus					SR
<i>Echinocereus fasciculatus</i>	Magenta-flower Hedgehog-cactus					SR
<i>Echinocereus ledingii</i>	Pinaleno Hedgehog Cactus					SR
<i>Echinocereus nicholii</i>	Nichol's Hedgehog Cactus					SR
<i>Echinocereus santaritensis</i>	Santa Rita Hedgehog Cactus					SR
<i>Echinocereus yavapaiensis</i>	Yavapai Hedgehog Cactus					SR
<i>Echinomastus erectocentrus</i> var. <i>acunensis</i>	Acuna Cactus	LE		S	HS	
<i>Echinomastus erectocentrus</i> var. <i>erectocentrus</i>	Needle-spined Pineapple Cactus					SR
<i>Echinomastus johnsonii</i>	Johnson's Fishhook Cactus					SR
<i>Elgaria kingii nobilis</i>	Arizona Alligator Lizard					2
<i>Elgaria kingii</i>	Madrean Alligator Lizard					2
<i>Empidonax fulvifrons pygmaeus</i>	Northern Buff-breasted Flycatcher		S			2
<i>Empidonax traillii extimus</i>	Southwestern Willow Flycatcher	LE		S		1
<i>Empidonax wrightii</i>	Gray Flycatcher					2
<i>Eremogone aberrans</i>	Mt. Dellenbaugh Sandwort		S			
<i>Eremophila alpestris</i>	Horned Lark					2
<i>Erigeron anchana</i>	Sierra Ancha Fleabane		S			
<i>Erigeron arisolius</i>	Arid Throne Fleabane		S			
<i>Erigeron heliographis</i>	Pinalenos Fleabane		S			
<i>Erigeron piscaticus</i>	Fish Creek Fleabane		S	S	SR	
<i>Erigeron saxatilis</i>	Rock Fleabane		S			
<i>Eriogonum capillare</i>	San Carlos Wild-buckwheat					SR
<i>Eriogonum ericifolium</i>	Yavapai County Buckwheat		S			
<i>Eriogonum heermannii</i> var. <i>argense</i>	Heermann's Rough Wild Buckwheat					SR
<i>Eriogonum ripleyi</i>	Ripley Wild-buckwheat		S		SR	

Arizona Game and Fish Department  
Project ID: HGIS-27399

project\_report\_phoenix\_area\_faa\_modernizat\_95692\_98667.pdf  
Review Date: 2/6/2026 09:11:09 AM

**Special Status Species Documented within 2 Miles of Project Vicinity**

Scientific Name	Common Name	FWS	USFS	BLM	NPL	SGCN
<i>Eryngium sparganophyllum</i>	Arizona Eryngo	LE		S		
<i>Escobaria vivipara</i> var. <i>rosea</i>	Viviparous Foxtail Cactus					SR
<i>Escobaria vivipara</i>	Ball Prickly-pear					SR
<i>Euderma maculatum</i>	Spotted Bat		S	S		2
<i>Eugenes fulgens</i>	Rivoli's Hummingbird					2
<i>Eumops perotis californicus</i>	Greater Western Bonneted Bat			S		2
<i>Eumops underwoodi</i>	Underwood's Bonneted Bat					2
<i>Euphagus cyanocephalus</i>	Brewer's Blackbird					2
<i>Euptilotis neoxenus</i>	Eared Quetzal		S			
<i>Falco mexicanus</i>	Prairie Falcon					2
<i>Falco peregrinus anatum</i>	American Peregrine Falcon		S	S		1
<i>Falco sparverius</i>	American Kestrel					2
<i>Ferocactus cylindraceus</i>	Desert Barrel Cactus					SR
<i>Ferocactus emoryi</i>	Emory's Barrel-cactus					SR
<i>Fremontodendron californicum</i>	Flannel Bush			S		SR
<i>Gastrophryne mazatlanensis</i>	Sinoloan Narrow-mouthed Toad			S		2
<i>Geothlypis tolmiei</i>	MacGillivray's Warbler					2
<i>Gila ditaenia</i>	Sonora Chub	LT				1
<i>Gila intermedia</i>	Gila Chub	LE		S		1
<i>Gila robusta</i>	Roundtail Chub		S	S		1
<i>Glaucidium brasilianum cactorum</i>	Cactus Ferruginous Pygmy-owl	LT	S	S		1
<i>Glaucidium gnoma californicum</i>	Northern Pygmy-owl					2
<i>Gopherus agassizii</i>	Mohave Desert Tortoise	LT		S		1
<i>Gopherus morafkai</i>	Sonoran Desert Tortoise	CCA	S	S		1
<i>Graptopetalum bartramii</i>	Bartram Stonecrop	LT	S	S		SR
<i>Gymnorhinus cyanocephalus</i>	Pinyon Jay	UR		S		2
<i>Haemorhous cassinii</i>	Cassin's Finch					2
<i>Haliaeetus leucocephalus</i> (wintering pop.)	Bald Eagle - Winter Population	NA, BGA	S	S		
<i>Haliaeetus leucocephalus</i>	Bald Eagle	NA, BGA	S	S		1
<i>Hedeoma diffusa</i>	Flagstaff False Pennyroyal		S			SR
<i>Helenium arizonicum</i>	Arizona Sneezeweed		S			
<i>Helianthus arizonensis</i>	Arizona Sunflower		S			
<i>Heloderma suspectum</i>	Gila Monster					1
<i>Heuchera eastwoodiae</i>	Senator Mine Alumroot		S			
<i>Heuchera glomerulata</i>	Chiricahua Mountain Alumroot		S			
<i>Hexalectris arizonica</i>	Arizona Crested Coral-root		S			SR
<i>Icterus bullockii</i>	Bullock's Oriole					2
<i>Icterus cucullatus</i>	Hooded Oriole					2

Arizona Game and Fish Department  
Project ID: HGIS-27399

project\_report\_phoenix\_area\_faa\_modernizat\_95692\_98667.pdf  
Review Date: 2/6/2026 09:11:09 AM

**Special Status Species Documented within 2 Miles of Project Vicinity**

Scientific Name	Common Name	FWS	USFS	BLM	NPL	SGCN
<i>Icterus parisorum</i>	Scott's Oriole					2
<i>Ictinia mississippiensis</i>	Mississippi Kite					2
<i>Idionycteris phyllotis</i>	Allen's Lappet-browed Bat		S	S		2
<i>Incilius alvarius</i>	Sonoran Desert Toad					2
<i>Junco phaeonotus</i>	Yellow-eyed Junco		S			2
<i>Kinosternon sonoriense longifemorale</i>	Sonoyta Mud Turtle	LE				1
<i>Kinosternon sonoriense sonoriense</i>	Desert Mud Turtle			S		2
<i>Kinosternon stejnegeri</i>	Arizona Mud Turtle					2
<i>Lampornis clemenciae</i>	Blue-throated Mountain-gem					2
<i>Lampropeltis triangulum</i>	Eastern Milksnake					1
<i>Lanius ludovicianus</i>	Loggerhead Shrike					2
<i>Laphamia ajoensis</i>	Ajo Rock Daisy				SR	
<i>Laphamia ambrosiifolia</i>	Lace-leaf Rockdaisy			S		
<i>Laphamia saxicola</i>	Roosevelt Dam Rockdaisy		S			
<i>Lasiurus cinereus</i>	Hoary Bat					2
<i>Lasiurus frantzii</i>	Desert Red Bat		S			2
<i>Lasiurus xanthinus</i>	Western Yellow Bat		S			2
<i>Laterallus jamaicensis coturniculus</i>	California Black Rail			S		3
<i>Leopardus pardalis</i>	Ocelot	LE		S		1
<i>Lepidomeda vittata</i>	Little Colorado Spinedace	LT		S		1
<i>Leptonycteris yerbabuenae</i>	Lesser Long-nosed Bat			S		1
<i>Lepus alleni</i>	Antelope Jackrabbit					2
<i>Lichanura trivirgata</i>	Three-Lined Boa					2
<i>Lilaeopsis schaffneriana</i> ssp. <i>recurva</i>	Huachuca Water-umbel	LE		S	HS	
<i>Listera convallarioides</i>	Broad-lip Twayblade				SR	
<i>Lophocereus schottii</i>	Senita				SR	
<i>Lotus alamosanus</i>	Sonoran Bird's-foot Trefoil		S			
<i>Lotus mearnsii</i> var. <i>equisolensis</i>	Horseshoe Deer Vetch		S			
<i>Lupinus latifolius</i> ssp. <i>leucanthus</i>	Broadleaf Lupine		S			
<i>Lupinus lemmonii</i>	Lemmon's Lupine		S			
<i>Mabrya acerifolia</i>	Mapleleaf False Snapdragon		S			
<i>Macrotus californicus</i>	California Leaf-nosed Bat			S		2
<i>Malaxis abieticola</i>	Slender-flowered Malaxis				SR	
<i>Malaxis porphyrea</i>	Cochise Adder's-mouth Orchid				SR	
<i>Mammillaria thornberi</i>	Thornber Fishhook Cactus				SR	
<i>Mammillaria viridiflora</i>	Varied Fishhook Cactus				SR	
<i>Mammillaria wrightii</i> var. <i>wilcoxii</i>	Wilcox Fishhook Cactus				SR	
<i>Manihot davisiae</i>	Arizona Manihot		S			

Arizona Game and Fish Department  
Project ID: HGIS-27399

project\_report\_phoenix\_area\_faa\_modernizat\_95692\_98667.pdf  
Review Date: 2/6/2026 09:11:09 AM

**Special Status Species Documented within 2 Miles of Project Vicinity**

Scientific Name	Common Name	FWS	USFS	BLM	NPL	SGCN
Maricopella allynsmithi	Phoenix Talussnail	UR				2
Masticophis bilineatus	Sonoran Whipsnake					2
Meda fulgida	Spikedace	LE		S		1
Megaceryle alcyon	Belted Kingfisher					
Megascops kennicottii	Western Screech-owl					2
Megascops trichopsis	Whiskered Screech-owl		S			2
Melanerpes lewis	Lewis's Woodpecker					2
Melanerpes uropygialis	Gila Woodpecker					2
Melospiza lincolni	Lincoln's Sparrow					2
Melospiza aberti	Abert's Towhee		S			2
Melospiza fusca	Canyon Towhee					2
Metastelma mexicanum	Wiggins Milkweed Vine		S			
Microtus longicaudus leucophaeus	White-bellied Long-tailed Vole		S			2
Microtus mogollonensis	Mogollon Vole		S	S		3
Micruroides euryxanthus	Sonoran Coralsnake					2
Muhlenbergia elongata	Sycamore Muhly		S			
Muhlenbergia palmeri	Palmer's Muhly		S			
Myadestes townsendi	Townsend's Solitaire					2
Myiarchus tuberculifer	Dusky-capped Flycatcher					2
Myiodynastes luteiventris	Sulphur-bellied Flycatcher		S			2
Myotis auriculus	Southwestern Myotis					2
Myotis lucifugus	Little Brown Bat	UR				
Myotis occultus	Arizona Myotis			S		
Myotis thysanodes	Fringed Myotis					2
Myotis velifer	Cave Myotis			S		2
Myotis yumanensis	Yuma Myotis					2
Neotamias cinereicollis	Gray-collared Chipmunk					2
Neotamias minimus	Least Chipmunk		S			2
Neotoma stephensi	Stephen's Woodrat					2
Nyctinomops femorosaccus	Pocketed Free-tailed Bat					2
Nyctinomops macrotis	Big Free-tailed Bat					2
Oncorhynchus apache	Apache Trout					1
Oncorhynchus gilae	Gila Trout	LT				1
Opuntia engelmannii var. flavispina	Cactus Apple					SR
Opuntia martiniana	Seashore Cactus					SR
Opuntia phaeacantha	New Mexican Prickly-pear					SR
Opuntia versicolor	Stag-horn Cholla					SR
Oreohelix anchana	Ancha Mountainsnail					2
Oreohelix grahamensis	Pinaleno Mountainsnail	CCA	S			1

Arizona Game and Fish Department  
Project ID: HGIS-27399

project\_report\_phoenix\_area\_faa\_modernizat\_95692\_98667.pdf  
Review Date: 2/6/2026 09:11:09 AM

**Special Status Species Documented within 2 Miles of Project Vicinity**

Scientific Name	Common Name	FWS	USFS	BLM	NPL	SGCN
Oreohelix houghi	Diablo Mountainsnail					2
Oreohelix yavapai	Yavapai Mountainsnail					2
Oreoscoptes montanus	Sage Thrasher					2
Packera neomexicana var. toumeyi	Toumey Groundsel		S			
Panthera onca	Jaguar	LE		S		1
Parabuteo unicinctus	Harris's Hawk					2
Passerculus sandwichensis	Savannah Sparrow					2
Passiflora arizonica	Arizona Passionflower		S			
Patagioenas fasciata	Band-tailed Pigeon					2
Pediomelum verdiensis	Verde Breadroot		S			
Pelazoneuron puberulum var. sonorense	Aravaipa Woodfern		S	S		
Pellaea lyngholmii	Lyngholm's Brakefern		S			
Peniocereus greggii var. transmontanus	Desert Night-blooming Cereus					SR
Peniocereus striatus	Dahlia Rooted Cereus					SR
Penstemon albomarginatus	White-margined Penstemon	UR		S		SR
Penstemon clutei	Sunset Crater Beardtongue		S			SR
Penstemon discolor	Catalina Beardtongue		S			HS
Penstemon nudiflorus	Flagstaff Beardtongue		S			
Perognathus amplus amplus	Yavapai Arizona Pocket Mouse					2
Perognathus amplus	Arizona Pocket Mouse					2
Peromyscus merriami	Merriam's Deermouse		S			3
Peromyscus nasutus	Northern Rock Deermouse					2
Peucaea carpalis	Rufous-winged Sparrow					2
Phacelia parishii	Parish's Phacelia			S		
Phemeranthus validulus	Tusayan Flameflower					SR
Phlox amabilis	Arizona Phlox		S			
Pholisma arenarium	Scaly Sandplant			S		HS
Phrynosoma goodei	Goode's Horned Lizard					2
Phrynosoma solare	Regal Horned Lizard					2
Phyllorhynchus browni	Saddled Leaf-nosed Snake					2
Pinicola enucleator	Pine Grosbeak					2
Platanthera aquilonis	Northern Green Orchid					SR
Platanthera limosa	Thurber's Bog Orchid					SR
Platanthera purpurascens	Purple-petal Bog Orchid					SR
Platanthera sparsiflora	Sparse Flowered Bog Orchid					SR
Platanthera zothecina	Alcove Bog Orchid		S			SR
Poecile gambeli	Mountain Chickadee					2

Arizona Game and Fish Department  
Project ID: HGIS-27399

project\_report\_phoenix\_area\_faa\_modernizat\_95692\_98667.pdf  
Review Date: 2/6/2026 09:11:09 AM

**Special Status Species Documented within 2 Miles of Project Vicinity**

Scientific Name	Common Name	FWS	USFS	BLM	NPL	SGCN
Poeciliopsis occidentalis occidentalis	Gila Topminnow	LE,UR		S		1
Polioptila nigriceps	Black-capped Gnatcatcher					2
Poecetes gramineus	Vesper Sparrow					2
Potentilla albiflora	Pinaleno Cinquefoil		S			
Progne subis hesperia	Desert Purple Martin			S		2
Protophila balmorhea	Balmorhea Saddle-case Caddisfly		S			
Pseudocymopterus davidsonii	Davidson Cliff Carrot		S			
Psiloscops flammeolus	Flammulated Owl					2
Ptychocheilus lucius	Colorado Pikeminnow	LE,XN				1
Puccinellia parishii	Parish Alkali Grass		S		HS	
Purshia subintegra	Arizona Cliff Rose	LE		S	HS	
Pyrgulopsis glandulosa	Verde Rim Springsnail		S			1
Pyrgulopsis montezumensis	Montezuma Well Springsnail					1
Pyrgulopsis morrisoni	Page Springsnail	CCAA	S			1
Pyrgulopsis simplex	Fossil Springsnail		S			1
Pyrgulopsis sola	Brown Springsnail		S			1
Pyrgulopsis sp. 27	Bradshaw Mountain Springsnail					1
Pyrgulopsis sp. 29	La Cebadilla Cienega Springsnail					1
Rallus obsoletus yumanensis	Yuma Ridgway's Rail	LE		S		1
Ramosomyia violiceps	Violet-crowned Hummingbird		S			2
Rana chiricahuensis	Chiricahua Leopard Frog	LT		S		1
Rana pipiens	Northern Leopard Frog		S	S		1
Rana yavapaiensis	Lowland Leopard Frog		S	S		1
Rhinichthys osculus	Speckled Dace			S		
Rhinotropis rusbyi	Rusby's Milkwort		S			
Rosa woodsii var. ertterae	Ertter's Rose		S			
Rumex orthoneurus	Blumer's Dock		S		HS	
Salix bebbiana	Bebb's Willow		S			
Salvia amissa	Aravaipa Sage		S	S		
Salvia dorrii ssp. mearnsii	Verde Valley Sage		S		SR	
Salvia pachyphylla ssp. eremopictus	Arizona Rose Sage					
Samolus vagans	Chiricahua Mountain Brookweed		S			
Sauromalus ater	Common Chuckwalla					
Sceloporus jarrovi	Madrean Mountain Spiny Lizard					2
Sciurus arizonensis	Arizona Gray Squirrel					2
Sclerocactus papyracanthus	Grama-grass Cactus				SR	
Selasphorus platycercus	Broad-tailed Hummingbird					2
Senticolis triaspis	Green Ratsnake		S			2
Setophaga graciae	Grace's Warbler					2

Arizona Game and Fish Department  
Project ID: HGIS-27399

project\_report\_phoenix\_area\_faa\_modernizat\_95692\_98667.pdf  
Review Date: 2/6/2026 09:11:09 AM

**Special Status Species Documented within 2 Miles of Project Vicinity**

Scientific Name	Common Name	FWS	USFS	BLM	NPL	SGCN
<i>Setophaga nigrescens</i>	Black-throated Gray Warbler					2
<i>Sigmodon arizonae cienegae</i>	Arizona Cotton Rat					2
<i>Sigmodon hispidus</i>	Hispid Cotton Rat					2
<i>Smilisca fodiens</i>	Lowland Burrowing Treefrog			S		2
<i>Sonorella ambigua verdensis</i>	Papago Verde Talussnail					2
<i>Sonorella anchana</i>	Sierra Ancha Talussnail					2
<i>Sonorella ashmuni</i>	Richinbar Talussnail					2
<i>Sonorella baboquivariensis</i>	Baboquivari Talussnail					2
<i>Sonorella bradshaveana</i>	Bradshaw Talussnail					2
<i>Sonorella christenseni</i>	Clark Peak Talussnail	CCA	S			1
<i>Sonorella compar</i>	Oak Creek Talussnail					2
<i>Sonorella galiuensis</i>	Galiuro Talussnail					2
<i>Sonorella grahamensis</i>	Pinaleno Talussnail	CCA	S			1
<i>Sonorella imitator</i>	Mimic Talussnail	CCA	S			1
<i>Sonorella macrophallus</i>	Wet Canyon Talussnail	CCA	S			1
<i>Sonorella micromphala</i>	Milk Ranch Talussnail					2
<i>Sonorella rooseveltiana</i>	Roosevelt Talussnail					2
<i>Sonorella sabinoensis</i>	Santa Catalina Talussnail					2
<i>Sonorella simmonsi</i>	Picacho Talussnail					2
<i>Sonorella superstitionis</i>	Superstition Mountains Talussnail					2
<i>Sonorella tortillita</i>	Tortolita Talussnail					2
<i>Sorex nanus</i>	Dwarf Shrew					2
<i>Spizella breweri</i>	Brewer's Sparrow					2
<i>Stenocereus thurberi</i>	Organ Pipe Cactus				SR	
<i>Stephanomeria exigua ssp. exigua</i>	Small Wirelettuce			S		
<i>Stevia lemmonii</i>	Lemmon's Stevia		S			
<i>Strix occidentalis lucida</i>	Mexican Spotted Owl	LT		S		1
<i>Tadarida brasiliensis</i>	Brazilian Free-tailed Bat					2
<i>Tamiasciurus fremonti grahamensis</i>	Mt Graham Red Squirrel	LE				1
<i>Terrapene ornata</i>	Ornate Box Turtle			S		1
<i>Thamnophis eques megalops</i>	Northern Mexican Gartersnake	LT	S	S		1
<i>Thamnophis rufipunctatus</i>	Narrow-headed Gartersnake	LT	S	S		1
<i>Tiaroga cobitis</i>	Loach Minnow	LE		S		1
<i>Toxostoma bendirei</i>	Bendire's Thrasher					2
<i>Toxostoma lecontei</i>	LeConte's Thrasher			S		2
<i>Triteleia lemmoniae</i>	Oak Creek Tritelleia				SR	
<i>Trogon elegans</i>	Elegant Trogon		S			2
<i>Tryonia porrecta</i>	Desert Tryonia					1
<i>Tryonia quitobaquitae</i>	Quitobaquito Tryonia	PE				1

Arizona Game and Fish Department  
Project ID: HGIS-27399

project\_report\_phoenix\_area\_faa\_modernizat\_95692\_98667.pdf  
Review Date: 2/6/2026 09:11:09 AM

**Special Status Species Documented within 2 Miles of Project Vicinity**

Scientific Name	Common Name	FWS	USFS	BLM	NPL	SGCN
<i>Tumamoca macdougallii</i>	Tumamoc Globeberry		S	S	SR	
<i>Tyrannus crassirostris</i>	Thick-billed Kingbird		S			2
<i>Uma scoparia</i>	Mohave Fringe-toed Lizard			S		2
<i>Uma thurmanae</i>	Mohawk Dunes Fringe-toad Lizard			S		2
<i>Vauquelinia californica</i> ssp. <i>sonorensis</i>	Arizona Sonoran Rosewood			S		
<i>Viola umbraticola</i>	Ponderosa Violet		S			
<i>Vireo vicinior</i>	Gray Vireo		S			2
<i>Washingtonia filifera</i>	California Fan Palm				SR	
<i>Wormaldia plana</i>	A Caddisfly		S			
<i>Xantusia arizonae</i>	Arizona Night Lizard					2
<i>Xantusia bezyi</i>	Bezy's Night Lizard		S			2
<i>Xyrauchen texanus</i>	Razorback Sucker	LE,PT		S		1
<i>Zephyranthes longifolia</i>	Copper Zephyr Lily				SR	
<i>Zonotrichia leucophrys oriantha</i>	Mountain West White-crowned Sparrow					2

Note: Status code definitions can be found at <https://www.azgfd.com/wildlife-conservation/on-the-ground-conservation/state-wildlife-action-plan/state-wildlife-action-plan-status-definitions/>.

**Special Areas Documented that Intersect with Project Footprint as Drawn**

Scientific Name	Common Name	FWS	USFS	BLM	NPL	SGCN
4 FRI - Rim Country	Conservation Opportunity Area					
A D Wash (Agua Fria River-Lake Pleasant)	Conservation Opportunity Area					
Agua Caliente Wash	Pima County Wildlife Movement Area - Riparian/Wash					
Agua Fria NM Riparian Corridors IBA	Important Bird Area					
Agua Fria Riparian Corridor	Conservation Opportunity Area					
Agua Fria River (lower)	Maricopa County Wildlife Movement Area - Riparian/Wash					
Agua Fria and tributaries	Yavapai County Wildlife Movement Area - Riparian/Wash					
Aguila Mtns - Crater Range	Maricopa County Wildlife Movement Area - Landscape					
Aguilas Mtns - Granite Mtns	Maricopa County Wildlife Movement Area - Landscape					
Ajo Range to Mesquite Mountains	Pima County Wildlife Movement Area - Landscape					
Ajo Range/Barajita Valley Wildland Block	Pima County Wildlife Movement Area - Diffuse					
Ak-Chin Indian Reservation	Ak-Chin Indian Reservation					

Arizona Game and Fish Department  
Project ID: HGIS-27399

project\_report\_phoenix\_area\_faa\_modernizat\_95692\_98667.pdf  
Review Date: 2/6/2026 09:11:09 AM

**Special Areas Documented that Intersect with Project Footprint as Drawn**

Scientific Name	Common Name	FWS	USFS	BLM	NPL	SGCN
Alamo Lake- Big Sandy River- Burro Creek- Santa Maria River	Yavapai County Wildlife Movement Area - Riparian/Wash					
Alder Canyon	Conservation Opportunity Area					
Alder Creek	Conservation Opportunity Area					
Alvarez/Artesa Mountains/Vamori Valley Wildland Block	Pima County Wildlife Movement Area - Diffuse					
Anderson Mesa IBA	Important Bird Area					
Anderson Mesa Summer - Winter Range	Coconino County Wildlife Movement Area - Diffuse					
Anderson Mesa	Conservation Opportunity Area					
Aravaipa Canyon Ecosystem	Conservation Opportunity Area					
Aravaipa Creek (Lower Aravaipa Creek)	Conservation Opportunity Area					
Arnett Creek (Upper Queen Creek)	Conservation Opportunity Area					
Ash Creek (Salt River Draw-Salt River)	Conservation Opportunity Area					
Ashfork - Hell Canyon	Yavapai County Wildlife Movement Area - Diffuse					
Ashurst/Kinnikink - Mormon Lake	Coconino County Wildlife Movement Area - Diffuse					
Aubrey Valley - Seventyfour Plains-Goodwin Mesa	Yavapai County Wildlife Movement Area - Landscape					
Baboquivari Mountains through Fresno Wash to Sierrita Mountains	Pima County Wildlife Movement Area - Landscape					
Baboquivari Mountains through Mendoza/Fresnal Wash to Sierrita Mountains	Pima County Wildlife Movement Area - Landscape					
Baboquivari/Coyote Mountains to Roskrige Mountains	Pima County Wildlife Movement Area - Landscape					
Baboquivari/Coyote/Quinlan Mountains Wildland Block	Pima County Wildlife Movement Area - Diffuse					
Badger Mountain - Glassford Hill	Yavapai County Wildlife Movement Area - Diffuse					
Barbershop Canyon - East Clear Creek to Headwaters	Conservation Opportunity Area					
Bargaman Park - Buck Mountain Area	Coconino County Wildlife Movement Area - Diffuse					
Bass Canyon Creek	Conservation Opportunity Area					
Batamote/Pozo Redondo/Souceda/Sikort Chuapo Mountains Wildland Block	Pima County Wildlife Movement Area - Diffuse					
Bates Mountain/Puerto Blanco Mountains to Ajo Range across State Route 85	Pima County Wildlife Movement Area - Landscape					

**Special Areas Documented that Intersect with Project Footprint as Drawn**

Scientific Name	Common Name	FWS	USFS	BLM	NPL	SGCN
Bates Well	Pima County Wildlife Movement Area - Diffuse					
Bear Canyon Complex (East Clear Creek Drainage)	Conservation Opportunity Area					
Bear Canyon-Sycamore Reservoir to Confluence with Sabino Canyon	Conservation Opportunity Area					
Bear Springs	Conservation Opportunity Area					
Bear Wallow Creek (Middle Black River)	Conservation Opportunity Area					
Beaver Creek	Conservation Opportunity Area					
Belmont Mtns - Bighorn Mtns	Maricopa County Wildlife Movement Area - Landscape					
Belmont Mtns - Saddle Mtn - Gila Bend Mtns	Maricopa County Wildlife Movement Area - Landscape					
Big Horn Mtns - Burnt Mtn - Saddle Mtns	Maricopa County Wildlife Movement Area - Landscape					
Big Horn Mtns - Eagletail Mtns	Maricopa County Wildlife Movement Area - Landscape					
Big Horn Mtns - Vulture Mtns - Desert Valley	Maricopa County Wildlife Movement Area - Landscape					
Big Sandy River	Conservation Opportunity Area					
Bill Williams Complex	Conservation Opportunity Area					
Bill Williams River - Alamo Lake to Lake Havasu	Conservation Opportunity Area					
Bill Williams River - Confluence of Big Sandy and Santa Maria rivers to Alamo Lake	Conservation Opportunity Area					
Bill Williams River NWR IBA	Important Bird Area					
Black Canyon Trail	Maricopa County Wildlife Movement Area - Landscape					
Black Mesa - Black Canyon	Yavapai County Wildlife Movement Area - Diffuse					
Black Mountain - Picacho Mountains	Pinal County Wildlife Movement Area - Landscape					
Black Mountain - Santa Catalina Mountains	Pinal County Wildlife Movement Area - Landscape					
Black Mountains	Conservation Opportunity Area					
Black Pass	Coconino County Wildlife Movement Area - Diffuse					
Blanco Wash	Pima County Wildlife Movement Area - Riparian/Wash					
Blue Ridge Reservoir/Clear Creek - Mogollon Rim	Coconino County Wildlife Movement Area - Diffuse					

**Special Areas Documented that Intersect with Project Footprint as Drawn**

Scientific Name	Common Name	FWS	USFS	BLM	NPL	SGCN
Blue Ridge	Coconino County Wildlife Movement Area - Diffuse					
Bolt/Soza/Youtcy Canyon	Pima County Wildlife Movement Area - Riparian/Wash					
Boner Canyon Complex	Conservation Opportunity Area					
Bonita Creek	Conservation Opportunity Area					
Boulder Creek Complex	Conservation Opportunity Area					
Bouse Dunes	Conservation Opportunity Area					
Boyce Thompson Arboretum (Upper Queen Creek)	Conservation Opportunity Area					
Boyce Thompson Arboretum/Arnett-Queen Creeks IBA	Important Bird Area					
Bradshaw Mtns - Lake Pleasant Regional Park	Maricopa County Wildlife Movement Area - Landscape					
Brawley Wash	Pima County Wildlife Movement Area - Riparian/Wash					
Brawley Wash/Avra Valley across CAP Canal Wash Siphon to Saguaro National Park (West)	Pima County Wildlife Movement Area - Landscape					
Buckeye Hills East - Sonoran Desert Nat Mon CA	Wildlife Connectivity					
Buckeye Hills West - Buckeye Hills East	Maricopa County Wildlife Movement Area - Landscape					
Buckhorn Spring (Agua Fria River-Lake Pleasant)	Conservation Opportunity Area					
Buehman Canyon (Redfield Canyon - San Pedro River)	Conservation Opportunity Area					
Buehman Canyon/Burro Creek	Pima County Wildlife Movement Area - Riparian/Wash					
Buenos Aires National Wildlife Refuge Wildland Block	Pima County Wildlife Movement Area - Diffuse					
Bull Tank (Upper Ash Creek)	Conservation Opportunity Area					
Bullock Canyon (Redfield Canyon - San Pedro River)	Conservation Opportunity Area					
Burro Creek (Upper Black River)	Conservation Opportunity Area					
Burro Creek Complex	Conservation Opportunity Area					
Bush Fire and Three Bar Natural Research Area	Conservation Opportunity Area					
CAP Canal Wash Siphon (Pima County Maintained)	Pima County Wildlife Crossing Area					
CAP Canal Wildlife Crossing (CAWCD Maintained)	Pima County Wildlife Crossing Area					
CAP Canal	Maricopa County Wildlife Movement Area - Landscape					

Arizona Game and Fish Department  
Project ID: HGIS-27399

project\_report\_phoenix\_area\_faa\_modernizat\_95692\_98667.pdf  
Review Date: 2/6/2026 09:11:09 AM

**Special Areas Documented that Intersect with Project Footprint as Drawn**

Scientific Name	Common Name	FWS	USFS	BLM	NPL	SGCN
CAP Canal	Pima County Wildlife Crossing Area					
CAP Wildlife Mitigation Corridor: Roskrige Mountains to Tucson Mountains	Pima County Wildlife Movement Area - Landscape					
CH for <i>Coccyzus americanus</i>	Yellow-billed Cuckoo Designated Critical Habitat					
CH for <i>Cyprinodon eremus</i>	Quitobaquito Desert Pupfish Designated Critical Habitat					
CH for <i>Echinomastus erectocentrus</i> var. <i>acunensis</i>	Acuna cactus Designated Critical Habitat					
CH for <i>Empidonax traillii extimus</i>	Southwestern Willow Flycatcher Designated Critical Habitat					
CH for <i>Gila intermedia</i>	Gila Chub Designated Critical Habitat					
CH for <i>Kinosternon sonoriense</i> <i>longifemorale</i>	Sonoyta Mud Turtle Designated Critical Habitat					
CH for <i>Lepidomeda vittata</i>	Little Colorado Spinedace Designated Critical Habitat					
CH for <i>Meda fulgida</i>	Spikedace Designated Critical Habitat					
CH for <i>Panthera onca</i>	Jaguar Designated Critical Habitat					
CH for <i>Rana chiricahuensis</i>	Chiricahua Leopard Frog Designated Critical Habitat					
CH for <i>Strix occidentalis lucida</i>	Mexican Spotted Owl Designated Critical Habitat					
CH for <i>Thamnophis eques</i> <i>megalops</i>	Northern Mexican gartersnake Designated Critical Habitat					
CH for <i>Thamnophis rufipunctatus</i>	Narrow-headed Gartersnake Designated Critical Habitat					
CH for <i>Tiaroga cobitis</i>	Loach Minnow Designated Critical Habitat					
CH for <i>Xyrauchen texanus</i>	Razorback Sucker Designated Critical Habitat					
Camp Creek	Conservation Opportunity Area					
Camp Verde IBA	Important Bird Area					
Campaign Creek (Pinto Creek)	Conservation Opportunity Area					
Canyon Creek	Conservation Opportunity Area					
Canyon Passes between Superior and Globe	Pinal County Wildlife Movement Area - Landscape					
Casa Grande Mountains	Pinal County Wildlife Movement Area - Diffuse					
Cave Creek (Cave Creek - Arizona Canal Diversion Channel)	Conservation Opportunity Area					
Cave Creek County Park - New River	Maricopa County Wildlife Movement Area - Landscape					
Cave Creek Ecosystem IBA	Important Bird Area					

**Special Areas Documented that Intersect with Project Footprint as Drawn**

Scientific Name	Common Name	FWS	USFS	BLM	NPL	SGCN
Cave Creek Tributaries - Apache Wash	Maricopa County Wildlife Movement Area - Riparian/Wash					
Cave Creek	Maricopa County Wildlife Movement Area - Riparian/Wash					
Centennial Wash	Maricopa County Wildlife Movement Area - Riparian/Wash					
Central Arizona Springsnails	Conservation Opportunity Area					
Central Yavapai County	Conservation Opportunity Area					
Charlebois Spring (Salt River-Apache, Canyon, and Saguaro Lake)	Conservation Opportunity Area					
Chase Creek	Conservation Opportunity Area					
Cherry Creek (Salt River-Theodore Roosevelt Lake)	Conservation Opportunity Area					
Cherry Creek Wash - Verde River	Yavapai County Wildlife Movement Area - Riparian/Wash					
Chevelon Canyon - Chevelon Canyon Lake to the confluence of Woods Canyon and Willow Springs Canyon	Conservation Opportunity Area					
Chevelon Canyon - Chevelon Crossing upstream to Chevelon Canyon Lake	Conservation Opportunity Area					
Chevelon Canyon - Horse Canyon upstream to Chevelon Crossing	Conservation Opportunity Area					
Chevelon Canyon Lake	Conservation Opportunity Area					
Chevelon Canyon	Coconino County Wildlife Movement Area - Diffuse					
Chevelon Creek	Apache/Navajo Counties Wildlife Movement Area - Riparian/Wash					
Child's Valley	Pima County Wildlife Movement Area - Diffuse					
Clear Creek Canyon	Coconino County Wildlife Movement Area - Riparian/Wash					
Clear Creek upstream of Clear Creek Reservoir to Willow Creek Confluence	Conservation Opportunity Area					
Cold Springs Property	Conservation Opportunity Area					
Colorado River Indian Reservation	Colorado River Indian Reservation					
Comobabi Mountains Wildland Block	Pima County Wildlife Movement Area - Diffuse					
Comobabi Mountains to Baboquivari Valley	Pima County Wildlife Movement Area - Landscape					
Coon Creek (Salt River-Theodore Roosevelt Lake)	Conservation Opportunity Area					

Arizona Game and Fish Department  
Project ID: HGIS-27399

project\_report\_phoenix\_area\_faa\_modernizat\_95692\_98667.pdf  
Review Date: 2/6/2026 09:11:09 AM

**Special Areas Documented that Intersect with Project Footprint as Drawn**

Scientific Name	Common Name	FWS	USFS	BLM	NPL	SGCN
Copper Creek (Sycamore Creek-Agua Fria River)	Conservation Opportunity Area					
Copper Wash	Maricopa County Wildlife Movement Area - Riparian/Wash					
Cottonwood Creek (Salt River-Theodore Roosevelt Lake)	Conservation Opportunity Area					
Cottonwood Seep	Conservation Opportunity Area					
Cottonwood Spring (Salt River-Apache, Canyon, and Saguaro Lake)	Conservation Opportunity Area					
Cottonwood Tank (Luke Wash-Gila River)	Conservation Opportunity Area					
Coyote - Ironwood - Tucson Linkage Design	Wildlife Connectivity					
Coyote-Baboquivari	Conservation Opportunity Area					
Crater Range - Childs Mountain	Maricopa County Wildlife Movement Area - Landscape					
Crater Range - Growler Mountains	Maricopa County Wildlife Movement Area - Landscape					
Crater Range - Saucedo Mountains	Maricopa County Wildlife Movement Area - Landscape					
Crater Range/Childs/Little Ajo Mountains to Batamote/Souceda Mountains	Pima County Wildlife Movement Area - Landscape					
Dane Canyon Complex	Conservation Opportunity Area					
Date Creek Mountain - Unnamed Mountains	Yavapai County Wildlife Movement Area - Diffuse					
Deadman Creek	Conservation Opportunity Area					
Deception Gulch - Bitter Creek	Yavapai County Wildlife Movement Area - Landscape					
Deer Creek (Rye Creek-Tonto Creek)	Conservation Opportunity Area					
Deer Creek - Aravaipa (Lower Aravaipa Creek)	Conservation Opportunity Area					
Devil's Canyon	Pinal County Wildlife Movement Area - Diffuse					
Dick Williams Creek (Haigler Creek-Tonto Creek)	Conservation Opportunity Area					
Diversion Park - Cedar Flats	Coconino County Wildlife Movement Area - Diffuse					
Dry Beaver Creek	Conservation Opportunity Area					
Dry Lake - Rogers Lake	Coconino County Wildlife Movement Area - Diffuse					
Dude Creek	Conservation Opportunity Area					

Arizona Game and Fish Department  
Project ID: HGIS-27399

project\_report\_phoenix\_area\_faa\_modernizat\_95692\_98667.pdf  
Review Date: 2/6/2026 09:11:09 AM

**Special Areas Documented that Intersect with Project Footprint as Drawn**

Scientific Name	Common Name	FWS	USFS	BLM	NPL	SGCN
Durham Hills - Black Mountains	Pinal County Wildlife Movement Area - Landscape					
Eagle Creek - Middle Reach (Lower Eagle Creek)	Conservation Opportunity Area					
Eagle Creek - Middle Reach Tributaries (Lower Eagle Creek)	Conservation Opportunity Area					
Eagle Creek - Upper Reach and Tributaries (Upper Eagle Creek)	Conservation Opportunity Area					
Eagle Creek	Conservation Opportunity Area					
Eagletail Mtns -Gila Bend Mtns	Maricopa County Wildlife Movement Area - Landscape					
East Clear Creek - C.C. Cragin Reservoir to headwaters	Conservation Opportunity Area					
East Clear Creek - Leonard Canyon to C.C. Cragin Reservoir	Conservation Opportunity Area					
East Clear Creek - Potato Lake	Coconino County Wildlife Movement Area - Diffuse					
East Maricopa Floodway	Maricopa County Wildlife Movement Area - Landscape					
East Sunset - West Sunset	Coconino County Wildlife Movement Area - Diffuse					
East Verde River - Mail Creek to Ash Creek	Conservation Opportunity Area					
East Verde River-Ash Creek to Verde River	Conservation Opportunity Area					
East Verde River	Conservation Opportunity Area					
Edgar Canyon Creek (Alder Wash - San Pedro R)	Conservation Opportunity Area					
El Capitan - Aravaipa Canyon	Pinal County Wildlife Movement Area - Landscape					
Ellison Creek	Conservation Opportunity Area					
Espee-Cataract Conservation Easements - Kaibab National Forest	Coconino County Wildlife Movement Area - Diffuse					
Estrella Maricopa Corridor	Conservation Opportunity Area					
Estrella Mountains - Vekol Valley	Pinal County Wildlife Movement Area - Landscape					
Estrella Mtn - Sierra Estrella Mtns	Maricopa County Wildlife Movement Area - Diffuse					
Face Mtn - Oatman Mtn - Painted Rock Mtns	Maricopa County Wildlife Movement Area - Landscape					
Fish Creek (Salt River-Apache, Canyon, and Saguaro Lake)	Conservation Opportunity Area					
Florence Military Reservation	Pinal County Wildlife Movement Area - Landscape					