

East Airports Workshop Proposed Procedure Boards

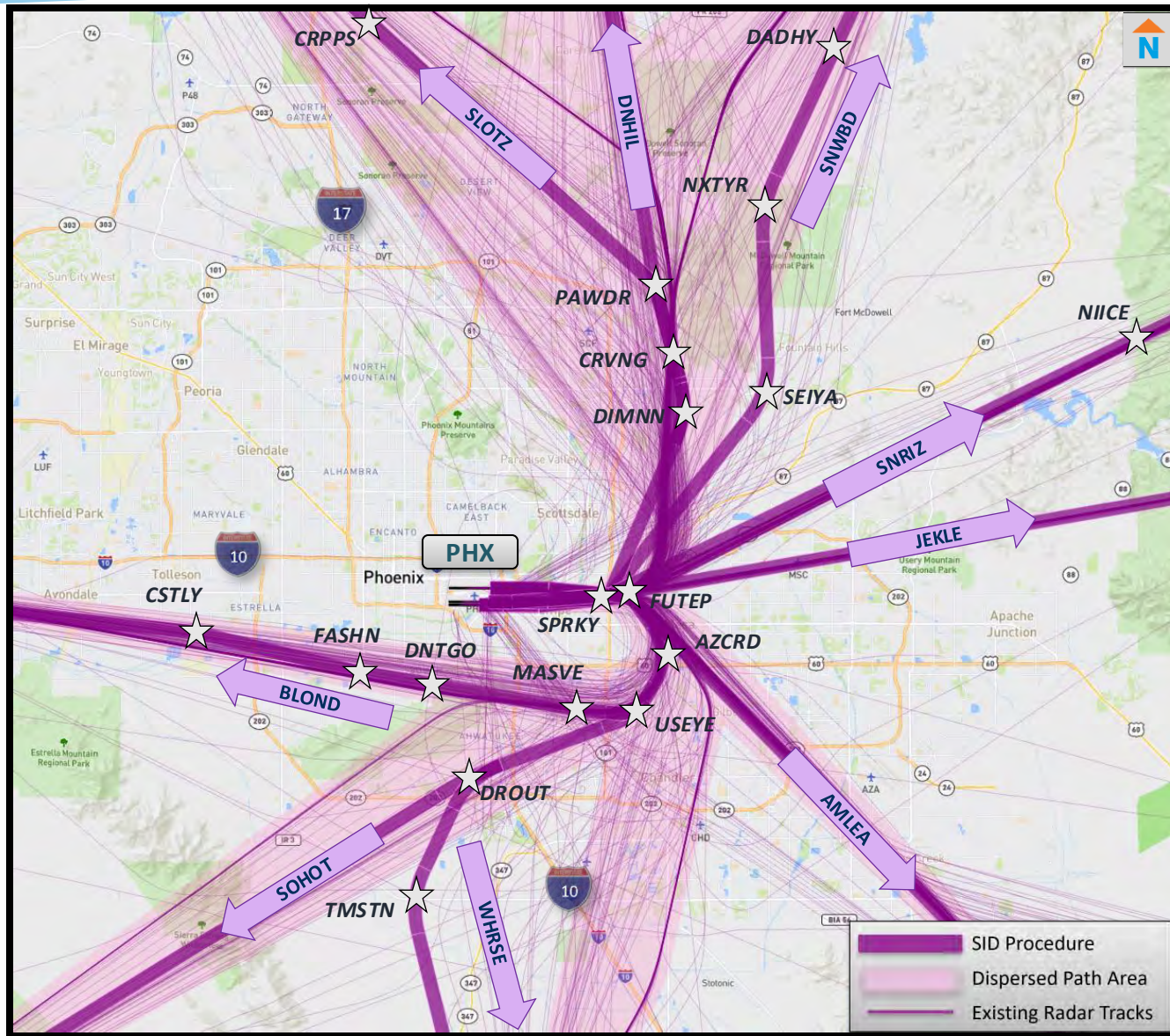
Chandler Municipal Airport

Falcon Field

Mesa Gateway Airport

Stellar Airpark





Published Procedure Board Overview

SNRIZ → Procedure – All procedures use a five-letter designation. This departure procedure is pronounced “Sunrise” The arrow indicates the direction of travel for departing or arriving procedures.

Departures

← **SNDVL** Arrivals

★ **SNBRN** Fix/Waypoint – Represents a latitude/longitude point on a procedure. Waypoints also use five-letter designations. This waypoint is pronounced “Sunbum”

Departures

Arrivals

Flight Path Area – Represents the approximate area that aircraft fly when Air Traffic Controllers give pilots headings to follow, called vectors.

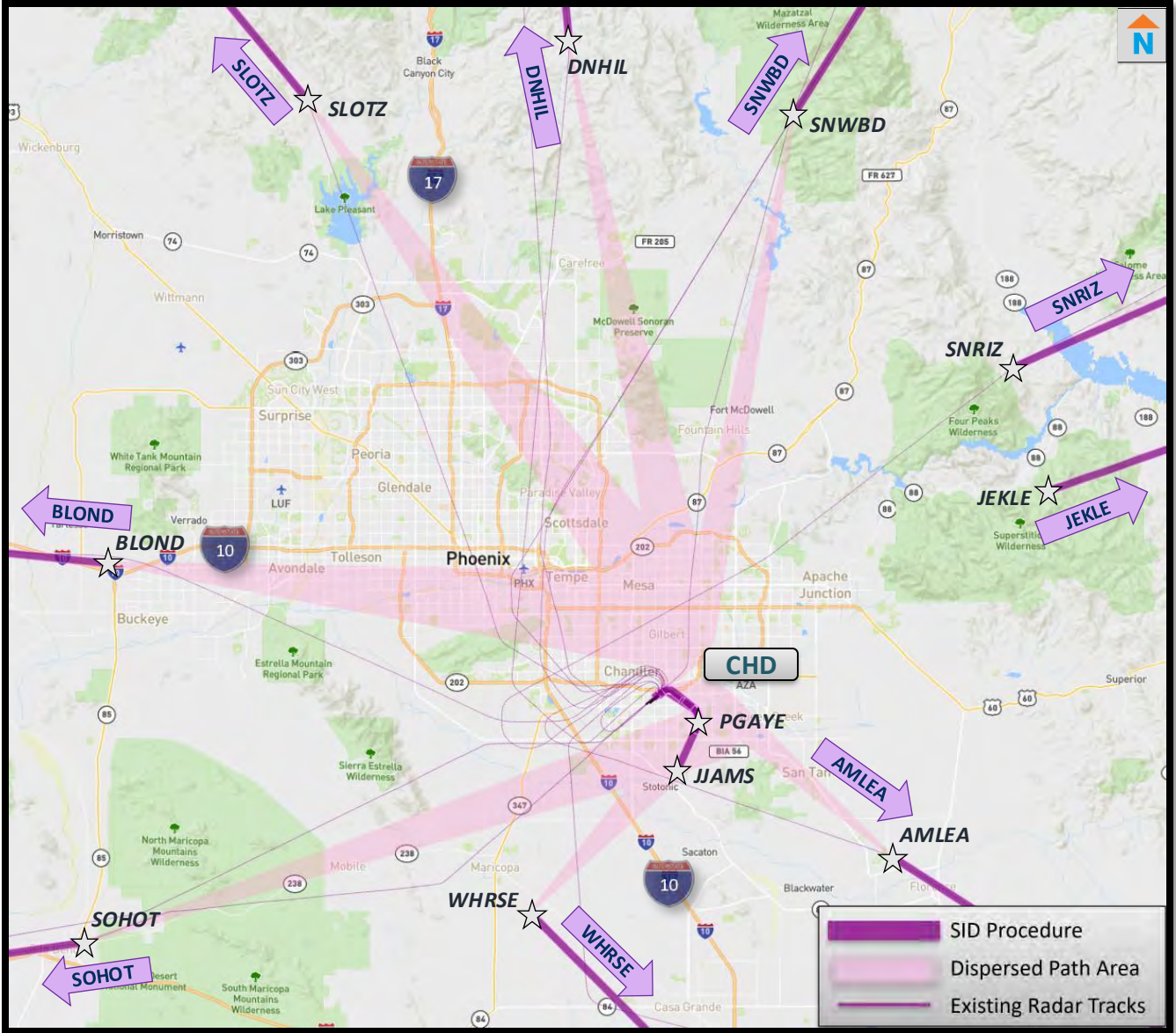
Flight Tracks – The arrival and departure flight tracks are from Dec 2024 and April 2025 using the FAA's radar data.

STAR	Standard Terminal Arrival
SID	Standard Instrument Departure
ATC	Air Traffic Control



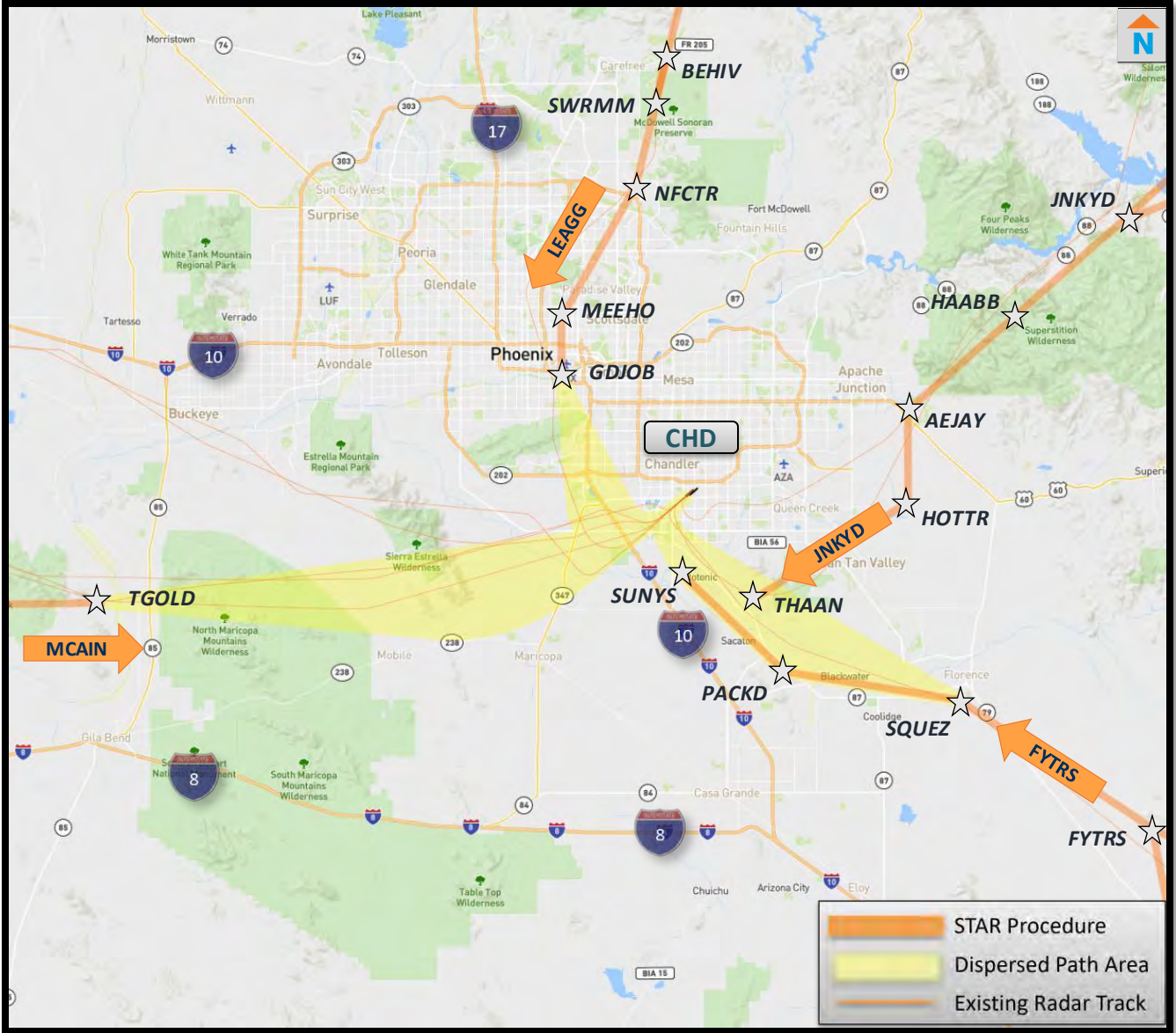
Chandler Municipal Airport Proposed East Flow Standard Instrument Departures

- This board shows existing flight tracks and proposed SIDs for east flow, departing Runway 4L and Runway 4R



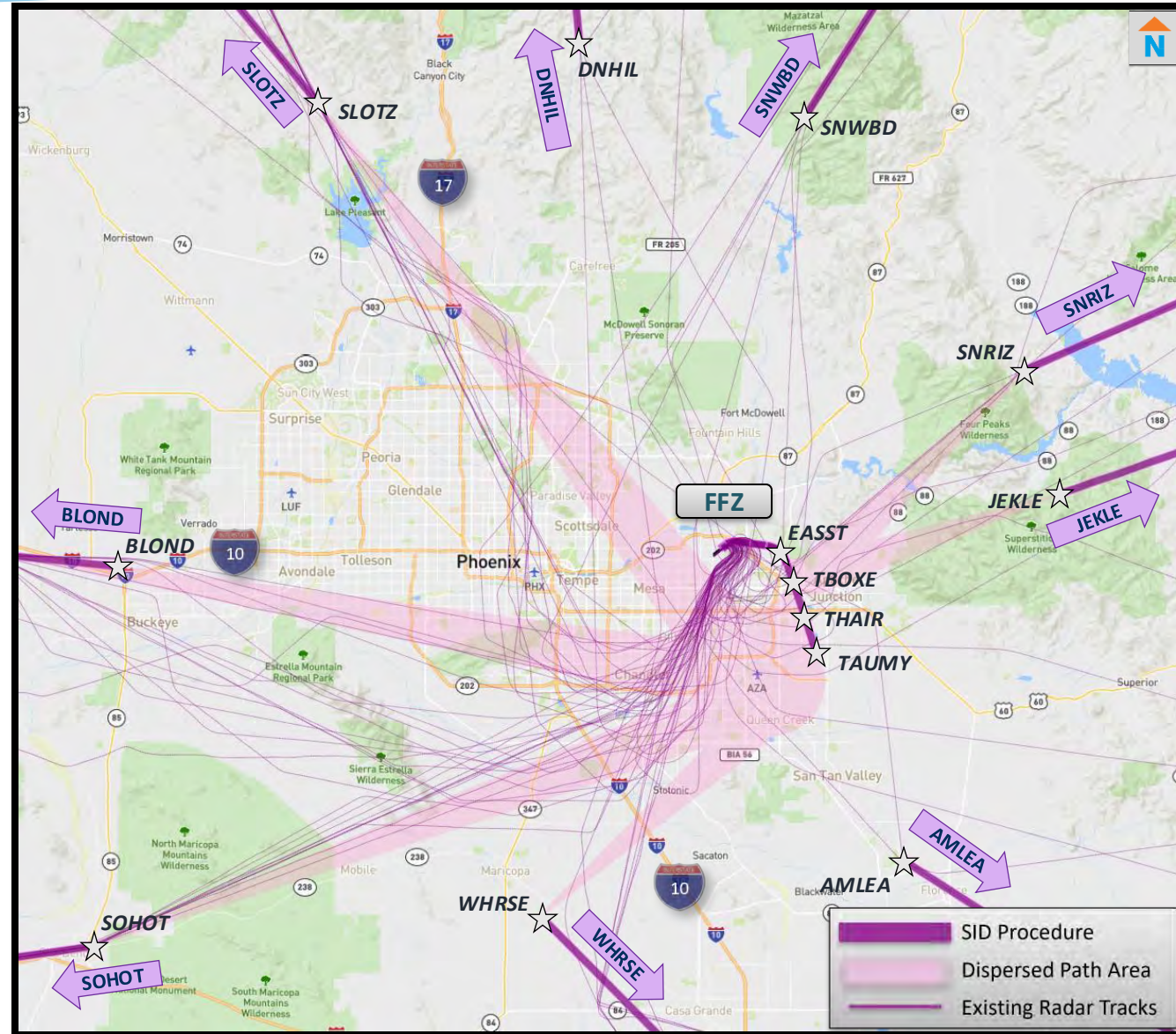
Chandler Municipal Airport Proposed East Flow Standard Instrument Arrivals

- This board shows existing flight tracks and proposed STARs for east flow arrivals using Runways 4L and 4R



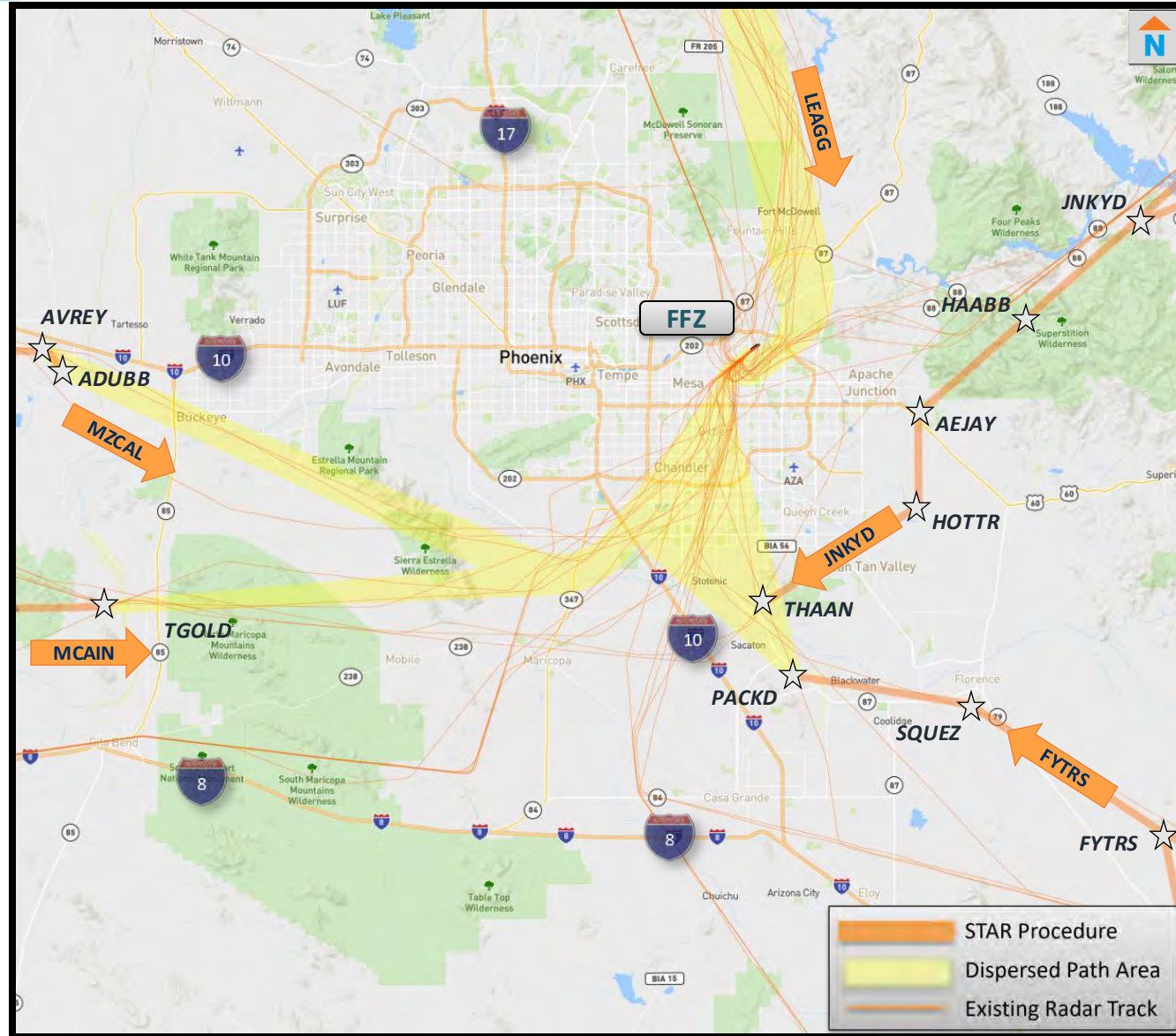
Falcon Field Airport Proposed East Flow Departures

- This board shows the existing flight tracks and proposed SIDs for east flow departures on Runway 4L and 4R



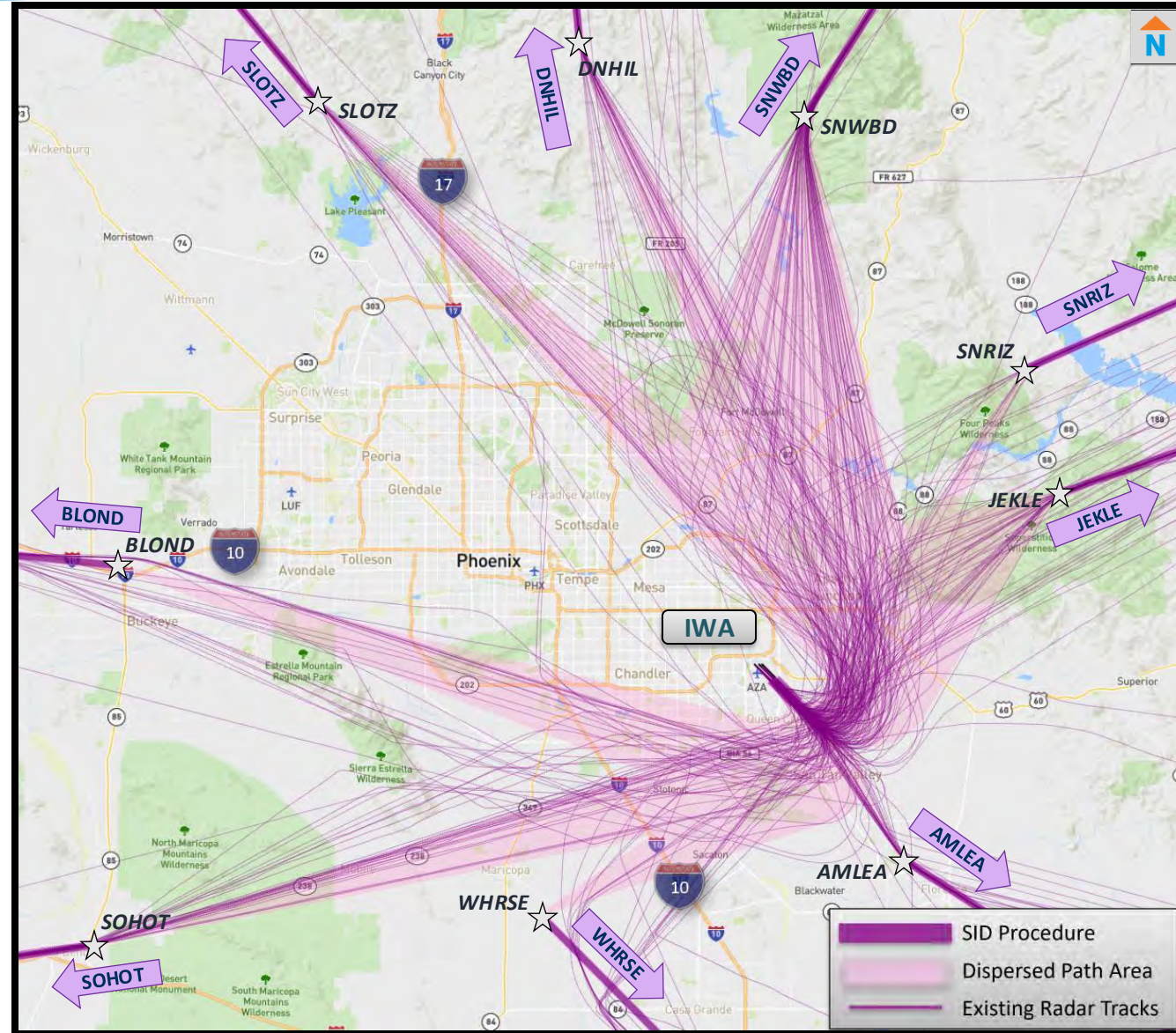
Falcon Field Airport Proposed East Flow Arrivals

- This board shows existing flight tracks and proposed STARs for east flow arrivals on Runway 4L and 4R



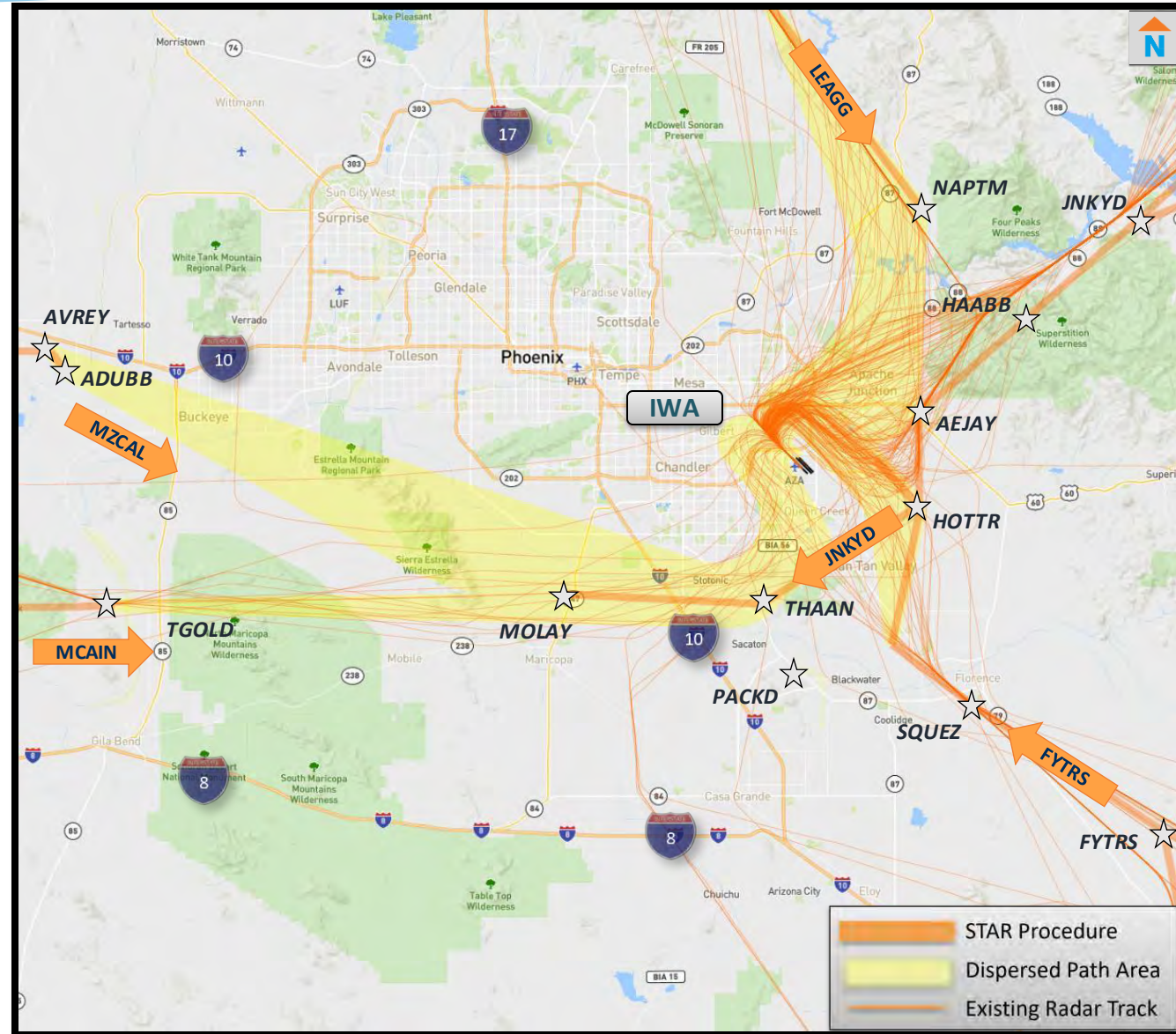
Mesa Gateway Airport Proposed South Flow Departures

- This board shows the existing flight tracks and proposed SIDs for south flow departures on Runway 12L, 12C, and 12R



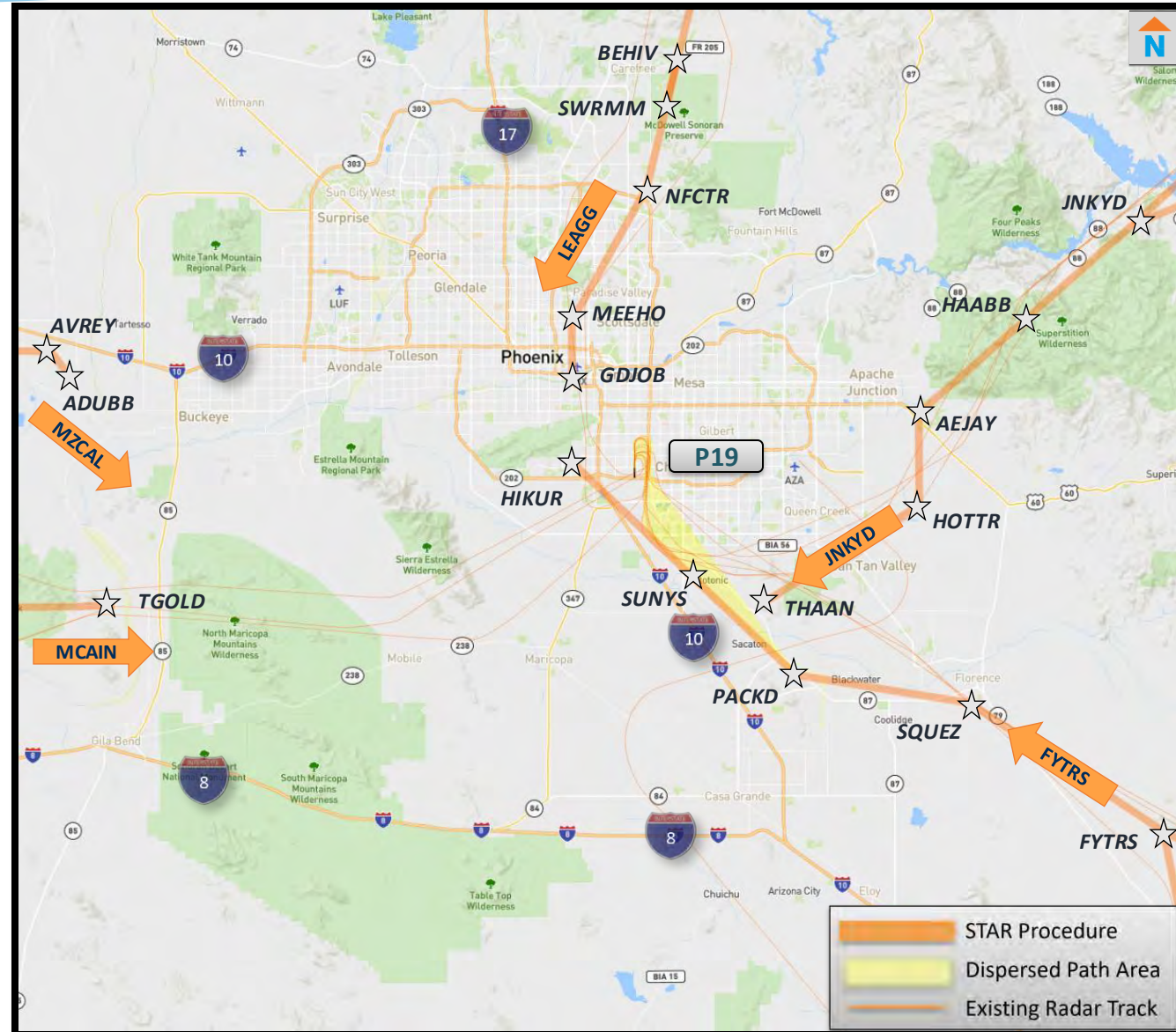
Mesa Gateway Airport Proposed South Flow Arrivals

- This board shows existing flight tracks and proposed STARs for south flow arrivals on Runways 12L, 12C and 12R



Stellar Airpark Proposed South Flow Arrivals

- This board shows the existing flight tracks and proposed STARs and for south flow arrivals on Runway 17



Stellar Airpark Proposed North Flow Arrivals

- This board shows existing flight tracks and proposed STARs for Runway 35

