

**Appendix A**

**OROSZ TWO DEPARTURE (RNAV) Terminal Procedure Publication Chart  
SLAPP ONE DEPARTURE (RNAV) Terminal Procedure Publication Chart**

**Draft Environmental Review  
Proposed Categorical Exclusion**

**October 2018**

**for the**

**OROSZ THREE DEPARTURE (RNAV) and SLAPP TWO DEPARTURE (RNAV)  
Proposed Procedure Amendments Project  
at Hollywood Burbank Airport, Burbank, California**



**Des Moines, WA**

(OROSZ2.OROSZ) 18032

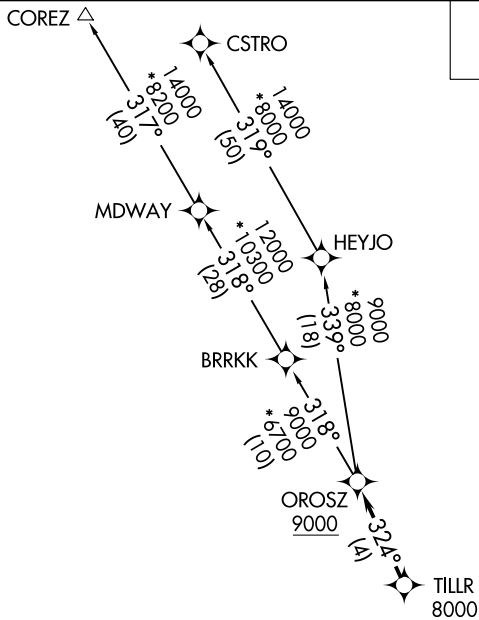
# OROSZ TWO DEPARTURE (RNAV)

AL-67 (FAA)

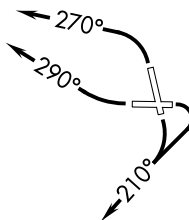
BOB HOPE (BUR)  
BURBANK, CALIFORNIA

**TOP ALTITUDE:  
FL230**

CINC DEL  
118.0 348.6  
CPDLC  
SOCAL DEP CON  
124.6 298.85



NOTE: DME/DME/IRU or GPS required.  
 NOTE: RNAV 1.  
 NOTE: RADAR required.  
 NOTE: Maintain at or below 250K unless otherwise directed by ATC.



### TAKEOFF MINIMUMS

- Rwy 8: Standard with minimum climb of 420' per NM to 2500.
- Rwy 15: Standard with minimum climb of 340' per NM to 2100.
- Rwy 26: Standard with minimum climb of 380' per NM to 4800.
- Rwy 33: Standard with minimum climb of 460' per NM to 4900.

NOTE: Chart not to scale.



### DEPARTURE ROUTE DESCRIPTION

TAKEOFF RUNWAYS 8, 15: Climbing right turn heading 210° or as assigned by ATC, expect vectors to cross TILLR at or above 8000, then on track 324° to cross OROSZ at or above 9000, thence. . .

TAKEOFF RUNWAY 26: Climbing right turn heading 290° or as assigned by ATC, expect vectors to cross TILLR at or above 8000, then on track 324° to cross OROSZ at or above 9000, thence. . .

TAKEOFF RUNWAY 33: Climbing left turn heading 270° or as assigned by ATC, expect vectors to cross TILLR at or above 8000, then on track 324° to cross OROSZ at or above 9000, thence. . .

. . . on (transition) maintain FL230. Expect filed altitude 10 minutes after departure.

COREZ TRANSITION (OROSZ2.COREZ)

CSTRO TRANSITION (OROSZ2.CSTRO)

# OROSZ TWO DEPARTURE (RNAV)

(OROSZ2.OROSZ) 01FEB18

BURBANK, CALIFORNIA  
BOB HOPE (BUR)

SW-3, 21 JUN 2018 to 19 JUL 2018

SW-3, 21 JUN 2018 to 19 JUL 2018

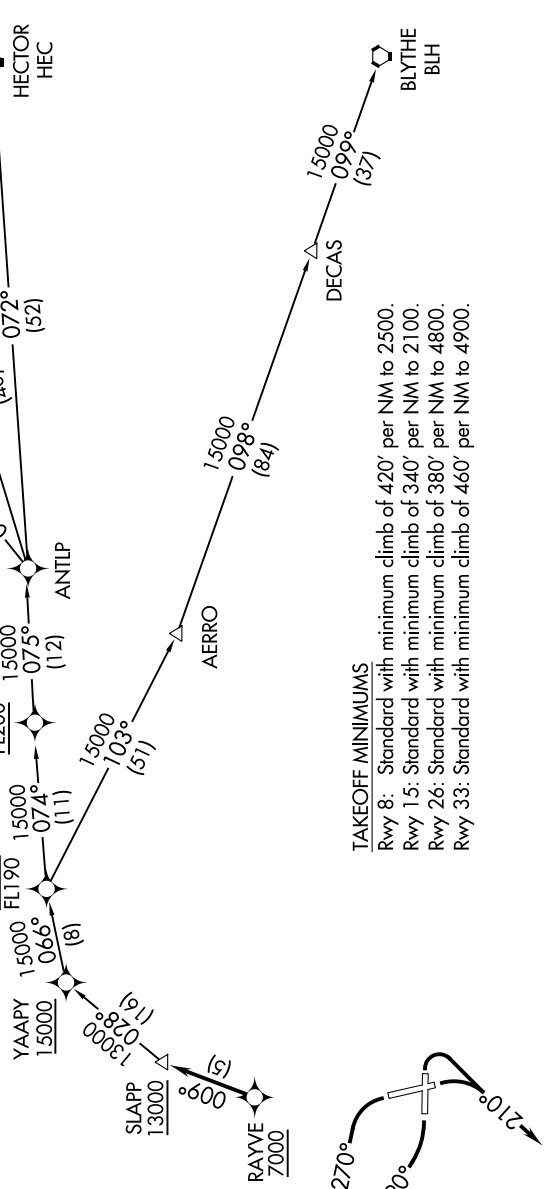
SW-3, 21 JUN 2018 to 19 JUL 2018

**TOP ALTITUDE:  
FL230**

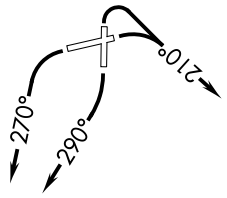
CINCDEL  
118.0 348.6  
CPDLC  
SOCAL DEP CON  
124.6 298.85

- NOTE: DME/DME/IRU or GPS required.
- NOTE: RNAV 1.
- NOTE: RADAR required.
- NOTE: Turbojet only.
- NOTE: MISEN TRANSITION Restricted to aircraft landing LAS complex.
- NOTE: HAILO TRANSITION ATC assigned only.

N



**TAKEOFF MINIMUMS**  
 Rwy 8: Standard with minimum climb of 420' per NM to 2500.  
 Rwy 15: Standard with minimum climb of 340' per NM to 2100.  
 Rwy 26: Standard with minimum climb of 380' per NM to 4800.  
 Rwy 33: Standard with minimum climb of 460' per NM to 4900.



NOTE: Chart not to scale.

(NARRATIVE ON FOLLOWING PAGE)

SW-3, 21 JUN 2018 to 19 JUL 2018



DEPARTURE ROUTE DESCRIPTION

TAKEOFF RUNWAY 8, 15: Climbing right turn heading 210°, expect vectors to RAYVE then on track 009° to cross SLAPP at or above 13000, thence. . . .

TAKEOFF RUNWAY 26: Climbing right turn heading 290°, expect vectors to RAYVE then on track 009° to cross SLAPP at or above 13000, thence. . . .

TAKEOFF RUNWAY 33: Climbing left turn heading 270°, expect vectors to RAYVE then on track 009° to cross SLAPP at or above 13000, thence. . . .

. . . .on (transition) maintain FL230. Expect filed altitude 10 minutes after departure.

BLYTHE TRANSITION (SLAPP1.BLH)

HAILO TRANSITION (SLAPP1.HAILO)

HECTOR TRANSITION (SLAPP1.HEC)

LAS VEGAS TRANSITION (SLAPP1.LAS)

MISEN TRANSITION (SLAPP1.MISEN)

SW-3, 21 JUN 2018 to 19 JUL 2018

SW-3, 21 JUN 2018 to 19 JUL 2018