

Appendix B

**OROSZ THREE DEPARTURE (RNAV) TARGETS Distribution Package
SLAPP Two DEPARTURE (RNAV) TARGETS Distribution Package**

**Draft Environmental Review
Proposed Categorical Exclusion**

October 2018

for the

**OROSZ THREE DEPARTURE (RNAV) and SLAPP TWO DEPARTURE (RNAV)
Proposed Procedure Amendments Project
at Hollywood Burbank Airport, Burbank, California**



Des Moines, WA

OROSZ

Point Of Contact

Organization Name - Southern California Metroplex

POC's Name - Robert E. Henry, SOCAL Metroplex Manager: Jose Gonzalez, SOCAL Metroplex NATCA CO-LEAD

Telephone Number - (661) 265-8434

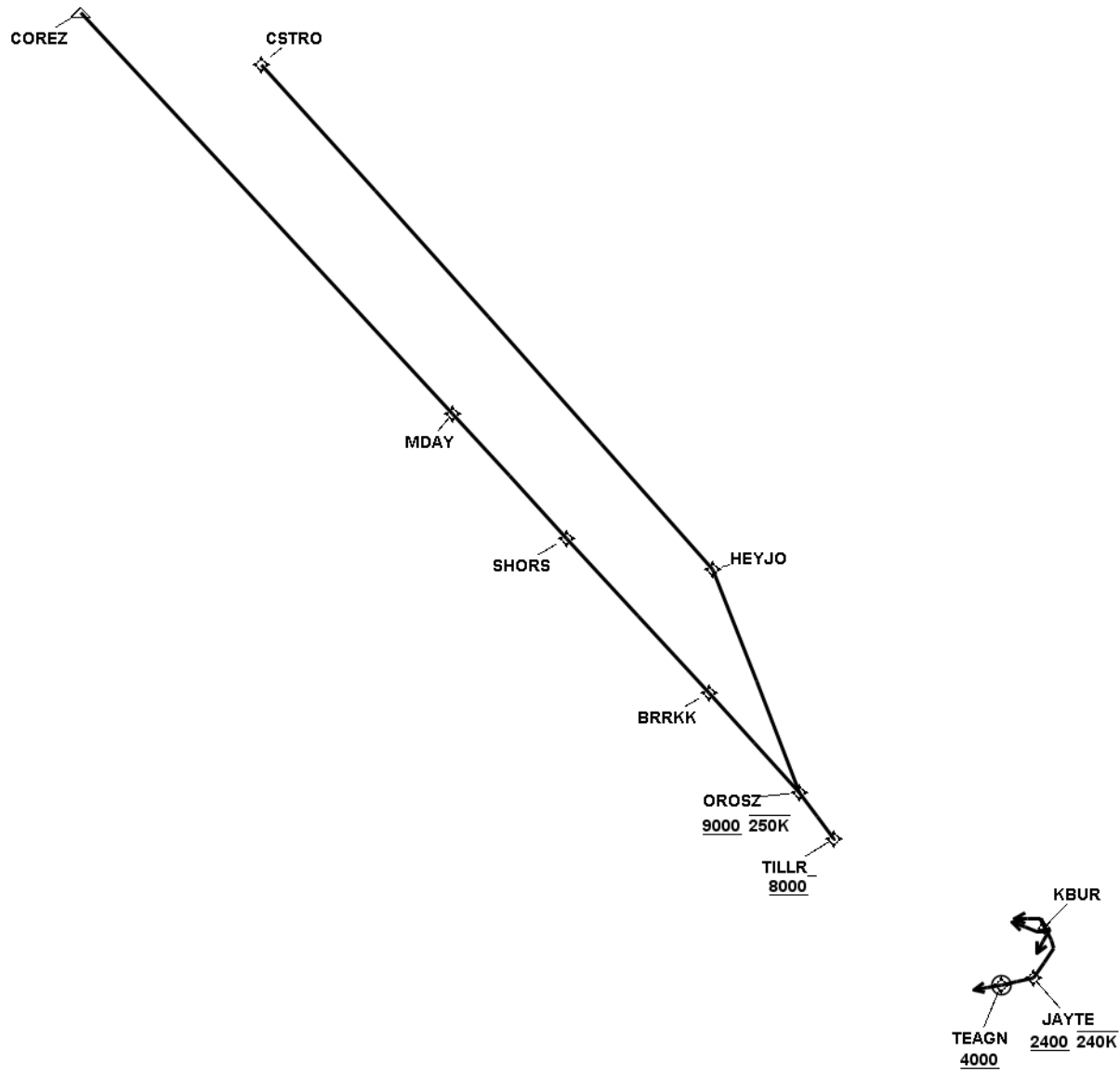
FAX Number - (661) 265-8338

Email Address - Robert.Henry@FAA.GOV; Jose.J.Gonzalez@FAA.GOV

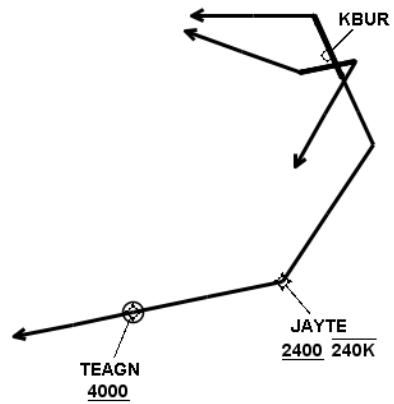
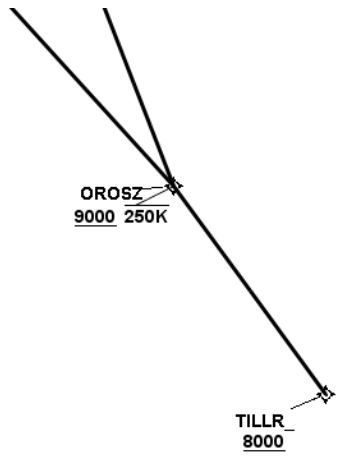
TARGETS Distribution Package

Version:5.4.0

Date: Tue Jun 12 12:23:35 PDT 2018



OROSZ



OROSZ

Runway Transition Data - KBUR:15

DB	End Point	Latitude (D° M' S.ss")	Longitude (D° M' S.ss")	FO/FB	Leg	TC	MC	Distance	Altitude	Speed	MEA	MOCA	Arc Center Lat (D° M' S.ss")	Arc Center Lon (D° M' S.ss")	Arc Radius (NM)
AIRNAV2 r13 10-13-16 TO UNK	DER RW15	N34 11 38.06	W118 21 19.33												
					VI	167.08	155.08	1.21							
	JAYTE WP	N34 08 33.85	W118 23 20.20	FB	CF	225.93	213.93	2.70	+2400	-240					
	TEAGN WP	N34 08 34.83	W118 26 22.36	FO	TF	270.38	258.38	2.52	+4000						
	TEAGN WP	N34 08 34.83	W118 26 22.36		FM	270.38	258.38								

Runway Transition Data - KBUR:RW08

DB	End Point	Latitude (D° M' S.ss")	Longitude (D° M' S.ss")	FO/FB	Leg	TC	MC	Distance	Altitude	Speed	MEA	MOCA	Arc Center Lat (D° M' S.ss")	Arc Center Lon (D° M' S.ss")	Arc Radius (NM)
AIRNAV2 r14 01-05-17 TO UNK	DER RW08	N34 11 51.54	W118 20 59.86												
					VM	222.00	210.00								

Runway Transition Data - KBUR:RW26

DB	End Point	Latitude (D° M' S.ss")	Longitude (D° M' S.ss")	FO/FB	Leg	TC	MC	Distance	Altitude	Speed	MEA	MOCA	Arc Center Lat (D° M' S.ss")	Arc Center Lon (D° M' S.ss")	Arc Radius (NM)
AIRNAV2 r11 01-05-17 TO UNK	DER RW26	N34 11 52.48	W118 22 08.91												
					VM	302.00	290.00								

Runway Transition Data - KBUR:RW33

DB	End Point	Latitude (D° M' S.ss")	Longitude (D° M' S.ss")	FO/FB	Leg	TC	MC	Distance	Altitude	Speed	MEA	MOCA	Arc Center Lat (D° M' S.ss")	Arc Center Lon (D° M' S.ss")	Arc Radius (NM)
AIRNAV2 r17 10-13-16 TO UNK	DER RW33	N34 12 44.44	W118 21 37.66												
					VM	282.00	270.00								

Common Route Data - OROSZ

DB	End Point	Latitude (D° M' S.ss")	Longitude (D° M' S.ss")	FO/FB	Leg	TC	MC	Distance	Altitude	Speed	MEA	MOCA	Arc Center Lat (D° M' S.ss")	Arc Center Lon (D° M' S.ss")	Arc Radius (NM)
	TILLR_ WP	N34 21 43.39	W118 38 20.16		IF				+8000						
AIRNAV2 PND r3 04-27-17 TO UNK	OROSZ WP	N34 25 36.18	W118 40 27.01	FB	TF	335.70	323.70	4.25	+9000	-250	8000				

En Route Transition Data - COREZ

DB	End Point	Latitude (D° M' S.ss")	Longitude (D° M' S.ss")	FO/FB	Leg	TC	MC	Distance	Altitude	Speed	MEA	MOCA	Arc Center Lat (D° M' S.ss")	Arc Center Lon (D° M' S.ss")	Arc Radius (NM)
AIRNAV2 PND r3 04-27-17 TO UNK	OROSZ WP	N34 25 36.18	W118 40 27.01		IF				+9000	-250					
AIRNAV2 r0 03-02-17 TO UNK	BRRKK WP	N34 34 14.96	W118 46 33.55	FB	TF	329.70	317.70	10.00			9000	6800			
AIRNAV2 r1 04-27-17 TO UNK	SHORS WP	N34 47 43.61	W118 56 07.37	FB	TF	329.67	317.67	15.60			12000	10300			
AIRNAV2 PND r3 02-01-18 TO UNK	MDWAY WP	N34 58 30.50	W119 03 49.98	FB	TF	329.53	317.53	12.49			12000	10300			
AIRNAV2 PND r6 04-27-17 TO UNK	COREZ WP	N35 33 24.00	W119 29 01.98	FB	TF	329.48	317.48	40.49			14000	7500			

En Route Transition Data - CSTRO

DB	End Point	Latitude (D° M' S.ss")	Longitude (D° M' S.ss")	FO/FB	Leg	TC	MC	Distance	Altitude	Speed	MEA	MOCA	Arc Center Lat (D° M' S.ss")	Arc Center Lon (D° M' S.ss")	Arc Radius (NM)
AIRNAV2 PND r3 04-27-17 TO UNK	OROSZ WP	N34 25 36.18	W118 40 27.01		IF				+9000	-250					
AIRNAV2 PND r1 04-27-17 TO UNK	HEYJO WP	N34 43 10.33	W118 43 53.04	FB	TF	350.83	338.83	17.77			8000	8000			
AIRNAV2 PND r1 04-27-17 TO UNK	CSTRO WP	N35 26 52.66	W119 14 07.00	FB	TF	330.52	318.52	50.20			14000	8000			

OROSZ

Point Data

DB	Point	Arc Center	Lat-Long (DMS.S)	Latitude (Deg)	Longitude (Deg)	Latitude (D°, M.mm')	Longitude (D°, M.mm')	Latitude (D° M' S.ss")	Longitude (D° M' S.ss")
AIRNAV2 r0 03-02-17 TO UNK	BRRKK WP		343414.96N-1184633.55W	N 34.5708222	W 118.7759861	N34 34.249	W118 46.559	N34 34 14.96	W118 46 33.55
AIRNAV2 PND r6 04-27-17 TO UNK	COREZ WP		353324.00N-1192901.98W	N 35.5566667	W 119.4838833	N35 33.400	W119 29.033	N35 33 24.00	W119 29 01.98
AIRNAV2 PND r1 04-27-17 TO UNK	CSTRO WP		352652.66N-1191407.00W	N 35.4479611	W 119.2352778	N35 26.878	W119 14.117	N35 26 52.66	W119 14 07.00
AIRNAV2 PND r1 04-27-17 TO UNK	HEYJO WP		344310.33N-1184353.04W	N 34.7195361	W 118.7314000	N34 43.172	W118 43.884	N34 43 10.33	W118 43 53.04
	JAYTE WP		340833.85N-1182320.20W	N 34.1427361	W 118.3889444	N34 08.564	W118 23.337	N34 08 33.85	W118 23 20.20
AIRNAV2 PND r3 02-01-18 TO UNK	MDWAY WP		345830.50N-1190349.98W	N 34.9751389	W 119.0638833	N34 58.508	W119 03.833	N34 58 30.50	W119 03 49.98
AIRNAV2 PND r3 04-27-17 TO UNK	OROSZ WP		342536.18N-1184027.01W	N 34.4267167	W 118.6741694	N34 25.603	W118 40.450	N34 25 36.18	W118 40 27.01
AIRNAV2 r1 04-27-17 TO UNK	SHORS WP		344743.61N-1185607.37W	N 34.7954472	W 118.9353806	N34 47.727	W118 56.123	N34 47 43.61	W118 56 07.37
	TEAGN WP		340834.83N-1182622.36W	N 34.1430083	W 118.4395444	N34 08.581	W118 26.373	N34 08 34.83	W118 26 22.36
	TILLR_ WP		342143.39N-1183820.16W	N 34.3620528	W 118.6389333	N34 21.723	W118 38.336	N34 21 43.39	W118 38 20.16
AIRNAV2 r9 05-26-16 TO UNK	UTI VOR/DME		370103.43N-1133104.44W	N 37.0176194	W 113.5179000	N37 01.057	W113 31.074	N37 01 03.43	W113 31 04.44

OROSZ

Database Effective Dates

Database	Date
UddfObstacle	03/09/2015
Tiled AIRNAV2	N/A
OEAAA	N/A
NFDC	03/29/2018
IFP_OFFLINE	N/A
DOF	03/29/2018
AVNII_OFFLINE	N/A
AIRNAV2	06/12/2018
CIFP	03/29/2018

Notes:

SLAPP

Point Of Contact

Organization Name - Southern California Metroplex

POC's Name - Robert E. Henry, SOCAL Metroplex Manager: Jose Gonzalez, SOCAL Metroplex NATCA CO-LEAD

Telephone Number - (661) 265-8434

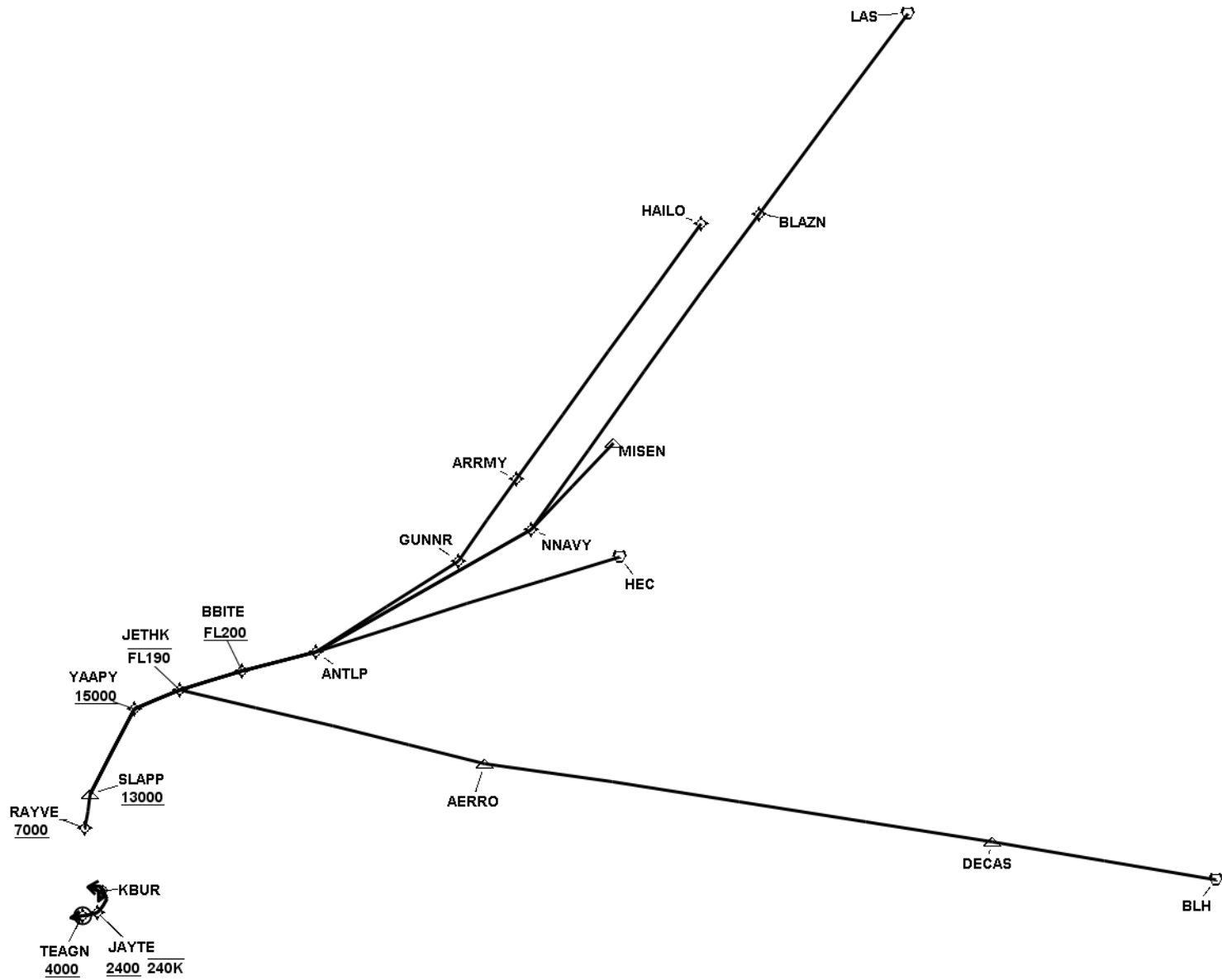
FAX Number - (661) 265-8338

Email Address - Robert.Henry@FAA.GOV; Jose.J.Gonzalez@FAA.GOV

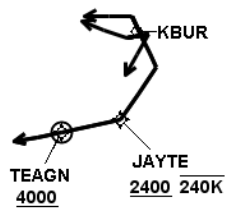
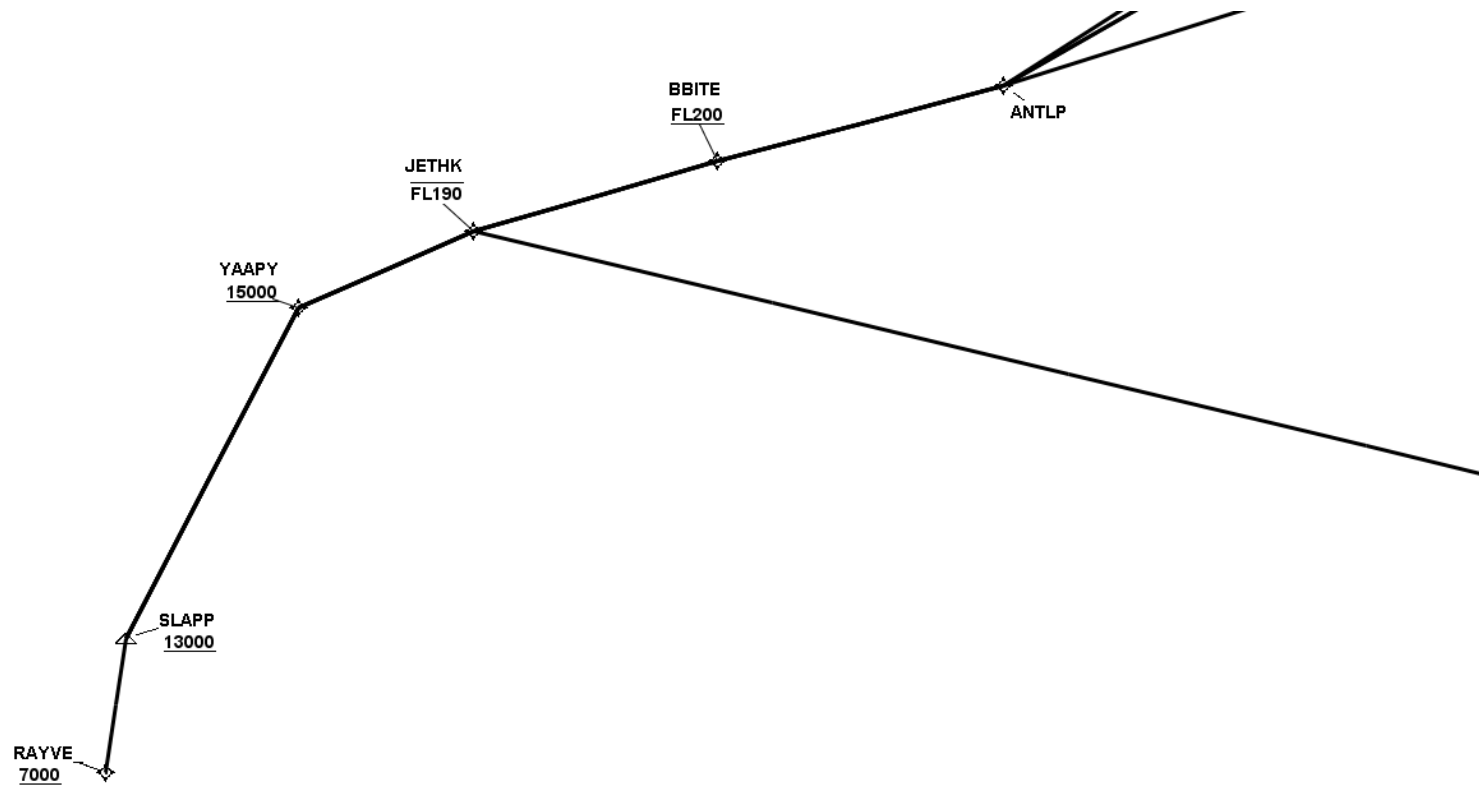
TARGETS Distribution Package

Version:5.4.0

Date: Mon Jul 02 12:00:57 PDT 2018



SLAPP



SLAPP

Runway Transition Data - K BUR:RW08

DB	End Point	Latitude (D° M' S.ss")	Longitude (D° M' S.ss")	FO/FB	Leg	TC	MC	Distance	Altitude	Speed	MEA	MOCA	Arc Center Lat (D° M' S.ss")	Arc Center Lon (D° M' S.ss")	Arc Radius (NM)
AIRNAV2 r14 01-05- 17 TO UNK	DER RW08	N34 11 51.54	W118 20 59.86												
					VM	222.00	210.00								

Runway Transition Data - K BUR:RW15

DB	End Point	Latitude (D° M' S.ss")	Longitude (D° M' S.ss")	FO/FB	Leg	TC	MC	Distance	Altitude	Speed	MEA	MOCA	Arc Center Lat (D° M' S.ss")	Arc Center Lon (D° M' S.ss")	Arc Radius (NM)
AIRNAV2 r13 10-13- 16 TO UNK	DER RW15	N34 11 38.06	W118 21 19.33												
					VI	167.08	155.08	1.22							
	JAYTE WP	N34 08 33.85	W118 23 20.20	FB	CF	225.93	213.93	2.70	+2400	-240					
	TEAGN WP	N34 08 34.83	W118 26 22.36	FO	TF	270.38	258.38	2.52	+4000						
	TEAGN WP	N34 08 34.83	W118 26 22.36		FM	270.38	258.38								

Runway Transition Data - K BUR:RW26

DB	End Point	Latitude (D° M' S.ss")	Longitude (D° M' S.ss")	FO/FB	Leg	TC	MC	Distance	Altitude	Speed	MEA	MOCA	Arc Center Lat (D° M' S.ss")	Arc Center Lon (D° M' S.ss")	Arc Radius (NM)
AIRNAV2 r11 01-05- 17 TO UNK	DER RW26	N34 11 52.48	W118 22 08.91												
					VM	302.00	290.00								

Runway Transition Data - K BUR:RW33

DB	End Point	Latitude (D° M' S.ss")	Longitude (D° M' S.ss")	FO/FB	Leg	TC	MC	Distance	Altitude	Speed	MEA	MOCA	Arc Center Lat (D° M' S.ss")	Arc Center Lon (D° M' S.ss")	Arc Radius (NM)
AIRNAV2 r17 10-13- 16 TO UNK	DER RW33	N34 12 44.44	W118 21 37.66												
					VM	282.00	270.00								

Common Route Data - SLAPP

DB	End Point	Latitude (D° M' S.ss")	Longitude (D° M' S.ss")	FO/FB	Leg	TC	MC	Distance	Altitude	Speed	MEA	MOCA	Arc Center Lat (D° M' S.ss")	Arc Center Lon (D° M' S.ss")	Arc Radius (NM)
	RAYVE_ WP	N34 22 29.79	W118 22 20.59		IF				+7000						
AIRNAV2 r3 03-02- 17 TO UNK	SLAPP WP	N34 27 50.14	W118 19 54.07	FB	TF	20.75	8.75	5.70	+13000		7300				

En Route Transition Data - BLH

DB	End Point	Latitude (D° M' S.ss")	Longitude (D° M' S.ss")	FO/FB	Leg	TC	MC	Distance	Altitude	Speed	MEA	MOCA	Arc Center Lat (D° M' S.ss")	Arc Center Lon (D° M' S.ss")	Arc Radius (NM)
AIRNAV2 r3 03-02- 17 TO UNK	SLAPP WP	N34 27 50.14	W118 19 54.07		IF				+13000						
AIRNAV2 r0 03-02- 17 TO UNK	YAAPY WP	N34 39 53.00	W118 07 50.00	FB	TF	39.59	27.59	15.62	+15000		13000	7500			
AIRNAV2 r0 03-02- 17 TO UNK	JETHK WP	N34 41 29.87	W117 58 19.35	FB	TF	78.34	66.34	8.01	-19000		15000	4900			
AIRNAV2 r0 03-02- 17 TO UNK	AERRO WP	N34 19 19.37	W117 02 20.21	FB	TF	115.30	103.30	51.29			15000	10500			
AIRNAV2 r5 03-02- 17 TO UNK	DECAS WP	N33 49 24.93	W115 27 23.80	FB	TF	110.29	98.29	84.33			15000	12200			
AIRNAV2 r15 06-27- 13 TO UNK	BLH VORTAC	N33 35 45.83	W114 45 40.58	FB	TF	111.19	99.19	37.38			15000	5900			

SLAPP

En Route Transition Data - HAILO

DB	End Point	Latitude (D° M' S.ss")	Longitude (D° M' S.ss")	FO/FB	Leg	TC	MC	Distance	Altitude	Speed	MEA	MOCA	Arc Center Lat (D° M' S.ss")	Arc Center Lon (D° M' S.ss")	Arc Radius (NM)
AIRNAV2 r3 03-02- 17 TO UNK	SLAPP WP	N34 27 50.14	W118 19 54.07		IF				+13000						
AIRNAV2 r0 03-02- 17 TO UNK	YAAPY WP	N34 39 53.00	W118 07 50.00	FB	TF	39.59	27.59	15.62	+15000		13000	7500			
AIRNAV2 r0 03-02- 17 TO UNK	JETHK WP	N34 41 29.87	W117 58 19.35	FB	TF	78.34	66.34	8.01	-19000		15000	4900			
AIRNAV2 r0 03-02- 17 TO UNK	BBITE WP	N34 42 16.22	W117 45 30.87	FB	TF	85.76	73.76	10.59	+20000		15000	5900			
AIRNAV2 r0 03-02- 17 TO UNK	ANTLP WP	N34 42 51.26	W117 30 29.82	FB	TF	87.23	75.23	12.39			15000	6400			
AIRNAV2 PND r2 04-27-17 TO UNK	GUNNR WP	N34 52 37.00	W116 59 13.00	FB	TF	69.13	57.13	27.54			15000	6300			
AIRNAV2 PND r1 04-27-17 TO UNK	ARRMY WP	N35 03 48.00	W116 44 24.00	FB	TF	47.41	35.41	16.52			15000	6800			
AIRNAV2 PND r2 04-27-17 TO UNK	HAILO WP	N35 38 14.00	W115 58 16.00	FB	TF	47.44	35.44	51.05			15000	7500			

SLAPP

En Route Transition Data - HEC

DB	End Point	Latitude (D° M' S.ss")	Longitude (D° M' S.ss")	FO/FB	Leg	TC	MC	Distance	Altitude	Speed	MEA	MOCA	Arc Center Lat (D° M' S.ss")	Arc Center Lon (D° M' S.ss")	Arc Radius (NM)
AIRNAV2 r3 03-02- 17 TO UNK	SLAPP WP	N34 27 50.14	W118 19 54.07		IF				+13000						
AIRNAV2 r0 03-02- 17 TO UNK	YAAPY WP	N34 39 53.00	W118 07 50.00	FB	TF	39.59	27.59	15.62	+15000		13000	7500			
AIRNAV2 r0 03-02- 17 TO UNK	JETHK WP	N34 41 29.87	W117 58 19.35	FB	TF	78.34	66.34	8.01	-19000		15000	4900			
AIRNAV2 r0 03-02- 17 TO UNK	BBITE WP	N34 42 16.22	W117 45 30.87	FB	TF	85.76	73.76	10.59	+20000		15000	5900			
AIRNAV2 r0 03-02- 17 TO UNK	ANTLP WP	N34 42 51.26	W117 30 29.82	FB	TF	87.23	75.23	12.39			15000	6400			
AIRNAV2 r15 02-09- 12 TO UNK	HEC VORTAC	N34 47 49.26	W116 27 46.52	FB	TF	84.22	72.22	51.92			15000	7700			

SLAPP

En Route Transition Data - LAS

DB	End Point	Latitude (D° M' S.ss")	Longitude (D° M' S.ss")	FO/FB	Leg	TC	MC	Distance	Altitude	Speed	MEA	MOCA	Arc Center Lat (D° M' S.ss")	Arc Center Lon (D° M' S.ss")	Arc Radius (NM)
AIRNAV2 r3 03-02- 17 TO UNK	SLAPP WP	N34 27 50.14	W118 19 54.07		IF				+13000						
AIRNAV2 r0 03-02- 17 TO UNK	YAAPY WP	N34 39 53.00	W118 07 50.00	FB	TF	39.59	27.59	15.62	+15000		13000	7500			
AIRNAV2 r0 03-02- 17 TO UNK	JETHK WP	N34 41 29.87	W117 58 19.35	FB	TF	78.34	66.34	8.01	-19000		15000	4900			
AIRNAV2 r0 03-02- 17 TO UNK	BBITE WP	N34 42 16.22	W117 45 30.87	FB	TF	85.76	73.76	10.59	+20000		15000	5900			
AIRNAV2 r0 03-02- 17 TO UNK	ANTLP WP	N34 42 51.26	W117 30 29.82	FB	TF	87.23	75.23	12.39			15000	6400			
AIRNAV2 PND r2 04-27-17 TO UNK	NNAVY WP	N34 55 10.68	W116 43 40.88	FB	TF	72.08	60.08	40.46			15000	6300			
AIRNAV2 PND r1 04-27-17 TO UNK	BLAZN WP	N35 37 55.21	W115 46 46.06	FB	TF	47.24	35.24	63.19			15000	6800			
AIRNAV2 r22 05-28- 15 TO UNK	LAS VORTAC	N36 04 46.93	W115 09 35.27	FB	TF	48.23	36.23	40.41			15000	9800			

SLAPP

En Route Transition Data - MISEN

DB	End Point	Latitude (D° M' S.ss")	Longitude (D° M' S.ss")	FO/FB	Leg	TC	MC	Distance	Altitude	Speed	MEA	MOCA	Arc Center Lat (D° M' S.ss")	Arc Center Lon (D° M' S.ss")	Arc Radius (NM)
AIRNAV2 r3 03-02- 17 TO UNK	SLAPP WP	N34 27 50.14	W118 19 54.07		IF				+13000						
AIRNAV2 r0 03-02- 17 TO UNK	YAAPY WP	N34 39 53.00	W118 07 50.00	FB	TF	39.59	27.59	15.62	+15000		13000	7500			
AIRNAV2 r0 03-02- 17 TO UNK	JETHK WP	N34 41 29.87	W117 58 19.35	FB	TF	78.34	66.34	8.01	-19000		15000	4900			
AIRNAV2 r0 03-02- 17 TO UNK	BBITE WP	N34 42 16.22	W117 45 30.87	FB	TF	85.76	73.76	10.59	+20000		15000	5900			
AIRNAV2 r0 03-02- 17 TO UNK	ANTLP WP	N34 42 51.26	W117 30 29.82	FB	TF	87.23	75.23	12.39			15000	6400			
AIRNAV2 PND r2 04-27-17 TO UNK	NNAVY WP	N34 55 10.68	W116 43 40.88	FB	TF	72.08	60.08	40.46			15000	6300			
AIRNAV2 PND r4 04-27-17 TO UNK	MISEN WP	N35 06 08.46	W116 24 13.86	FB	TF	55.49	43.49	19.37			15000	5500			

SLAPP

Point Data

DB	Point	Arc Center	Lat-Long (DMS.S)	Latitude (Deg)	Longitude (Deg)	Latitude (D°, M.mm')	Longitude (D°, M.mm')	Latitude (D° M' S.ss")	Longitude (D° M' S.ss")
AIRNAV2 r0 03-02-17 TO UNK	AERRO WP		341919.37N-1170220.21W	N 34.3220472	W 117.0389472	N34 19.323	W117 02.337	N34 19 19.37	W117 02 20.21
AIRNAV2 r0 03-02-17 TO UNK	ANTLP WP		344251.26N-1173029.82W	N 34.7142389	W 117.5082833	N34 42.854	W117 30.497	N34 42 51.26	W117 30 29.82
AIRNAV2 PND r1 04-27-17 TO UNK	ARRMY WP		350348.00N-1164424.00W	N 35.0633333	W 116.7400000	N35 03.800	W116 44.400	N35 03 48.00	W116 44 24.00
AIRNAV2 r0 03-02-17 TO UNK	BBITE WP		344216.22N-1174530.87W	N 34.7045056	W 117.7585750	N34 42.270	W117 45.514	N34 42 16.22	W117 45 30.87
AIRNAV2 PND r1 04-27-17 TO UNK	BLAZN WP		353755.21N-1154646.06W	N 35.6320028	W 115.7794611	N35 37.920	W115 46.768	N35 37 55.21	W115 46 46.06
AIRNAV2 r15 06-27-13 TO UNK	BLH VORTAC		333545.83N-1144540.58W	N 33.5960646	W 114.7612734	N33 35.764	W114 45.676	N33 35 45.83	W114 45 40.58
AIRNAV2 r5 03-02-17 TO UNK	DECAS WP		334924.93N-1152723.80W	N 33.8235917	W 115.4566111	N33 49.416	W115 27.397	N33 49 24.93	W115 27 23.80
AIRNAV2 PND r2 04-27-17 TO UNK	GUNNR WP		345237.00N-1165913.00W	N 34.8769444	W 116.9869444	N34 52.617	W116 59.217	N34 52 37.00	W116 59 13.00
AIRNAV2 PND r2 04-27-17 TO UNK	HAILO WP		353814.00N-1155816.00W	N 35.6372222	W 115.9711111	N35 38.233	W115 58.267	N35 38 14.00	W115 58 16.00
AIRNAV2 r15 02-09-12 TO UNK	HEC VORTAC		344749.26N-1162746.52W	N 34.7970179	W 116.4629220	N34 47.821	W116 27.775	N34 47 49.26	W116 27 46.52
	JAYTE WP		340833.85N-1182320.20W	N 34.1427361	W 118.3889444	N34 08.564	W118 23.337	N34 08 33.85	W118 23 20.20
AIRNAV2 r0 03-02-17 TO UNK	JETHK WP		344129.87N-1175819.35W	N 34.6916306	W 117.9720417	N34 41.498	W117 58.323	N34 41 29.87	W117 58 19.35

SLAPP

AIRNAV2 r22 05-28- 15 TO UNK	LAS VORTAC		360446.93N-1150935.27W	N 36.0797030	W 115.1597977	N36 04.782	W115 09.588	N36 04 46.93	W115 09 35.27
AIRNAV2 PND r4 04-27-17 TO UNK	MISEN WP		350608.46N-1162413.86W	N 35.1023500	W 116.4038500	N35 06.141	W116 24.231	N35 06 08.46	W116 24 13.86
AIRNAV2 PND r2 04-27-17 TO UNK	NNAVY WP		345510.68N-1164340.88W	N 34.9196333	W 116.7280222	N34 55.178	W116 43.681	N34 55 10.68	W116 43 40.88
	RAYVE_WP		342229.79N-1182220.59W	N 34.3749417	W 118.3723861	N34 22.496	W118 22.343	N34 22 29.79	W118 22 20.59
AIRNAV2 r3 03-02- 17 TO UNK	SLAPP WP		342750.14N-1181954.07W	N 34.4639278	W 118.3316861	N34 27.836	W118 19.901	N34 27 50.14	W118 19 54.07
	TEAGN WP		340834.83N-1182622.36W	N 34.1430083	W 118.4395444	N34 08.581	W118 26.373	N34 08 34.83	W118 26 22.36
AIRNAV2 r9 05-26- 16 TO UNK	UTI VOR/DME		370103.43N-1133104.44W	N 37.0176194	W 113.5179000	N37 01.057	W113 31.074	N37 01 03.43	W113 31 04.44
AIRNAV2 r0 03-02- 17 TO UNK	YAAPY WP		343953.00N-1180750.00W	N 34.6647222	W 118.1305556	N34 39.883	W118 07.833	N34 39 53.00	W118 07 50.00

No FAA checks included.

Database Effective Dates

Database	Date
UddfObstacle	03/09/2015
Tiled AIRNAV2	N/A
OEAAA	N/A
NFDC	05/24/2018
IFP_OFFLINE	N/A
DOF	05/24/2018
AVNII_OFFLINE	N/A
AIRNAV2	07/02/2018
CIFP	06/21/2018

Notes:

SLAPP