

AERONAUTICAL CHARTING MEETING
Charting Group

BRIEFING ITEM

Subject: Foreign Area Data Projections on Enroute and Visual Charts

Background/Discussion: FAA chart extents into foreign airspace is provided for the purpose of orientation and transition off FAA-produced US products. They provide title panel Warning:

Warning: Refer to current foreign charts and flight information publications for information within foreign airspace.

Chart notes include these references in Canada and in Mexico:

NOTE: REFER TO CURRENT MEXICAN CHARTS AND FLIGHT INFORMATION PUBLICATIONS FOR INFORMATION WITHIN MEXICAN AIRSPACE

NOTE: REFER TO CURRENT CANADIAN CHARTS AND FLIGHT INFORMATION PUBLICATIONS FOR INFORMATION WITHIN CANADIAN AIRSPACE

Currently the foreign area data collection is resource intensive, uneven and delayed in currency, and in some areas outside of U.S. airspace overly detailed in content that does not reflect the intended use of these products.

Planned Actions: Clarify the NOTE: with the following language.

NOTE: Limited chart information provided outside of US airspace for orientation and transition to foreign charts and flight information publications. Refer to foreign publications outside of US airspace.

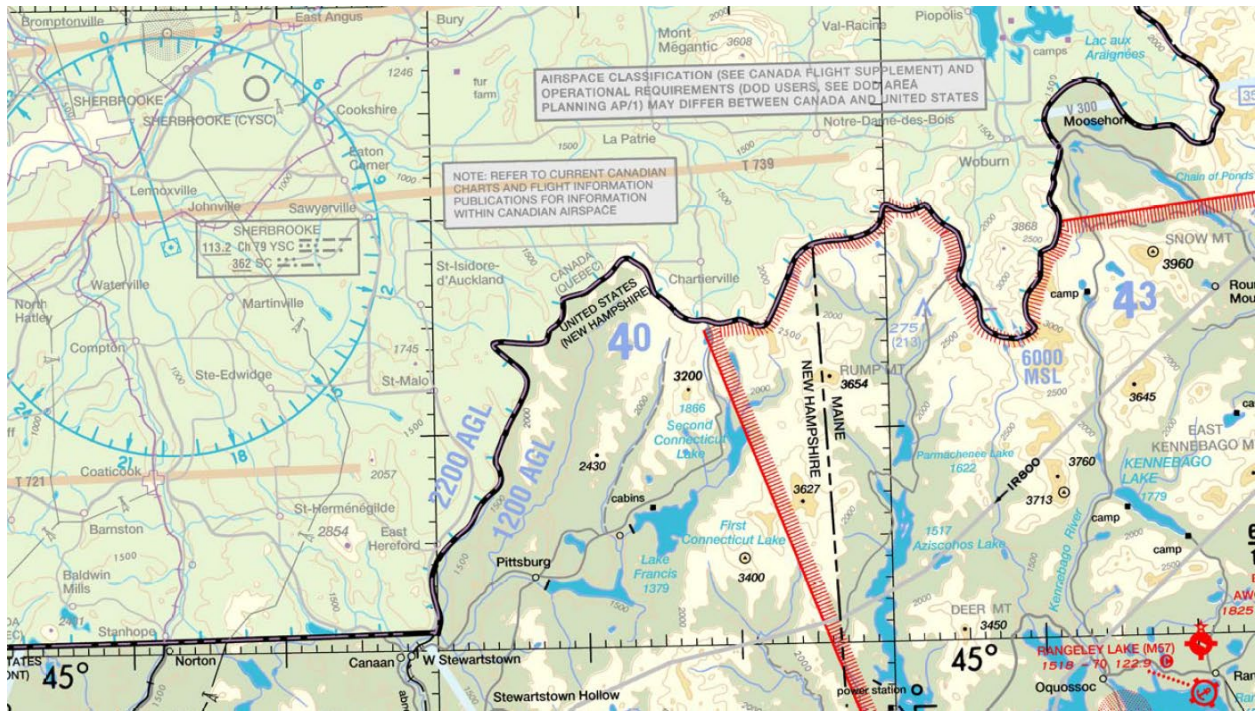
A skeletonized data set for orientation and transition has been identified and will continue to exist on FAA- produced IFR Enroute and VFR charts, including the following:

- Aeronautical attributes (symbols & text) in screened black, entire area of foreign airspace on Enroute charts in screen grey
- Airports (Name, ident, generic airport symbol) No airports designated or identifiable as private-use only shall be shown.
- NAVAIDs (Name, ident, frequency/channel, symbol)
- Airways (Route centerline, ident, on-airway fixes, fix makeups using US NAVAIDs)
- Center airspace boundaries (Symbol, ident) Only those boundaries coincident with US airspace control or national boundary shall be shown.
- Time zones
- Visual charts include additional VFR orientation attributes (roads, city names, contours, etc.) See sample attachments for conceptual understanding.

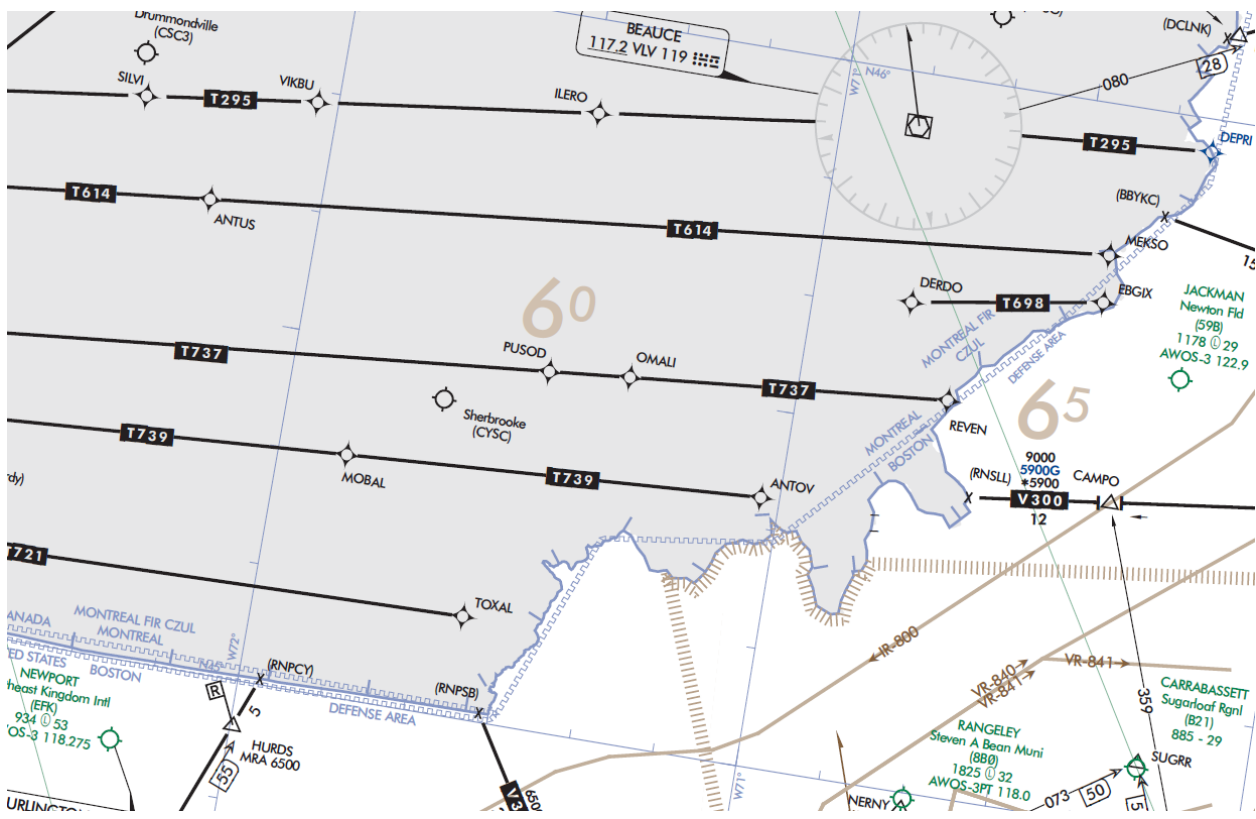
Comments: A future Charting Notice will advise of these changes. For VFR Charts this will be implemented in concert with the 56-day VFR Charts and Whitehorse Sectional actions.

Submitted by: Guy Copeland, FAA/AJV-A210, 15 April 2020

Montreal Sectional representative excerpt sample:



Enroute L-32 representative excerpt sample:



MEETING 20-02

Katie Murphy, FAA/AJV-A214, provided an update on the [briefing document](#) that was sent to the ACM mailing list last April after the cancellation of ACM 20-01. She summarized the planned changes for the future depiction of foreign data and showed the audience [examples](#) of the proposed depiction on Enroute and Visual charts. She said only skeletonized data for orientation and transition will be shown outside of the U.S. A note will be placed along the border alerting pilots that limited chart information will be provided outside of U.S. airspace and that pilots should refer to foreign charts and flight information in those areas. Valerie Watson, FAA/AJV-A250, reported that only positive feedback was received as a result of the briefing document sent last April. She said specification change documents have been drafted to adopt the briefed proposal and are still in the vetting process. The target date for implementation is February 25, 2021. Katie said that once the changes are approved and the implementation is set, a Charting Notice will be published to make users aware of the changes.