

# Noise Abatement Information

## Best Practices for Chart Supplement

Presented to: Aeronautical Charting Meeting 22-01

By: Kent Duffy, APP-400

Date: April 25, 2022



**Federal Aviation  
Administration**

We are  
**Airports**

**SAMPLE**

①  
CITY NAME

②  
AIRPORT NAME (ALTERNATE NAME) (LTS)(KLTS) CIV/MIL 3 N UTC-6(-5DT) N34°41.93' W99°20.20'

③  
200 B TPA-1000(800) AOE LRA Class IV, ARFF Index A NOTAM FILE ORL Not insp. MON Airport

④  
⑤  
⑥  
⑦  
⑧  
⑨  
JACKSONVILLE  
COPTER  
H-4G, L-19C  
IAP, DIAP, AD

⑩  
⑪  
⑫  
⑬  
⑭  
⑮  
⑯  
⑰  
⑱  
⑲ → RWY 18-36: H12004X200 (ASPH-CONC-GRVD)  
S-90, D-160, 2D-300 PCN 80 R/B/W/T HIRL CL  
RWY 18: RLLS. MALSF. TDZL. REIL. PAPI(P2R)-GA 3.0° TCH 36'.  
RVR-TMR. Thld dspcd 300'. Trees. Rgt tfc. 0.3% up.  
RWY 36: ALSF1. 0.4% down.  
RWY 09-27: H6000X150 (ASPH) MIRL  
RWY 173-353: H3515X150 (ASPH-PFC) AUW PCN 59 F/A/W/T

⑳ → LAND AND HOLD-SHORT OPERATIONS

LDG RWY	HOLD-SHORT POINT	AVBL LDG DIST
RWY 18	09-27	6500
RWY 36	09-27	5400

㉑ → RUNWAY DECLARED DISTANCE INFORMATION

RWY 18: TORA-12004 TODA-12004 ASDA-11704 LDA-11504  
RWY 36: TORA-12004 TODA-12004 ASDA-12004 LDA-11704

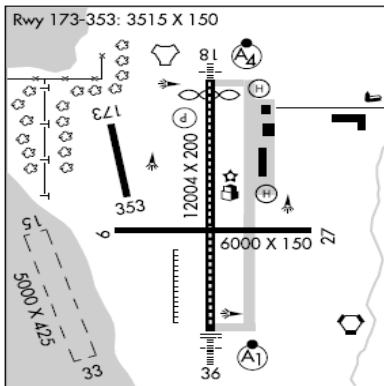
㉒ → ARRESTING GEAR/SYSTEM

RWY 18 HOOK E5 (65' OVRN) BAK-14 BAK-12B (1650')  
BAK-14 BAK-12B (1087') HOOK E5 (74' OVRN) RWY 36

㉓ → SERVICE: S4 FUEL 100LL, JET A OX 1, 3 LGT ACTIVATE MALSR Rwy 29, REIL Rwy 11, VASI Rwy 11, HIRL Rwy 11-29, PAPI Rwy 17 and Rwy 35, MIRL Rwy 17-35-CTAF. MILITARY- A-GEAR E-5 connected on dep end, disconnected on apch end.  
JASU 3(AM32A-60) 2(AM32A-86) FUEL J8(Mil)(NC-100, A)  
FLUID W SP PRESAIR LOX OIL O-128 MAINT S1 Mon-Fri 1000-2200Z‡  
TRAN ALERT Avbl 1300-0200Z‡ svc limited weekends.

㉔ → NOISE: NS ABTMT Quiet Hrs 0300-1200Z. No eng or maint runups dur quiet hrs. No TGL or SGL dur quiet hrs.

㉕ → AIRPORT REMARKS: Special Air Traffic Rules-Part 93, see Regulatory Notices. Attended 1200-0300Z‡. Parachute Jumping. Deer invof arpt. Heavy jumbo jet training surface to 9000'. Twy A clsd indef. Flight Notification Service (ADCUS) avbl.



⑳ **NOISE**

*Remarks that indicate noise information and/or abatement measures that exist at and in the vicinity of the airport.*

**Results go here!**



# Project Recap

- **Intended Outcomes**

- Chart Supplement entry should normally be the single reference needed by the pilot
- Develop best practices for noise abatement information in the Chart Supplement
  - Develop standard terminology and structure for noise abatement entries published in ‘front matter’
  - Define when complex (graphical) noise abatement plans are best to include in the back matter

- **Implementation**

1. ‘Best Practices’ guidance document used by airports
2. ‘New’ noise abatement information will use best practices to develop entries for submission for the Chart Supplement
3. Airports with existing entries revise their entry in accordance with best practices (incrementally)



# Best Practices Content

## Helping Airports ‘structure’ Noise Abatement Info

- **Organized around common themes in noise abatement instructions**
  - Quiet or Curfew Hours
  - Ground/Surface Instructions
  - Preferential Runway Use
  - Noise Sensitive Areas
  - VFR Track Instructions
  - IFR Flight Procedures
  - Profiles, etc.
- **Modular use within Taxonomy**

# Example

- As is:  
No touch and go ops are permitted  
btw 0300–1100Z±. NS ABTMT  
procedures in effect are as follows,  
Rwy 05, turn left hdg 020° until  
reaching 1000′, then on crs, Rwy 23,  
turn left hdg 210° until reaching  
1000′, then on crs, Rwy 33, fly rwy  
hdg until reaching 1000′, then on crs.



# Taxonomy/Structure Application

Taxonomy Rules	New Text
Intro	<b>Noise:</b> eff 24 hrs.
Quiet or Curfew Hours	
Ground Instructions	No maint runups btn 0300-1200Z, exc when rqr for early morning sked fit.
Preferential Runway Use	PREF RWY USE, Rwy 23 for calm winds. No TGL btn 0300–1100Z.
Noise-Sensitive Areas	
VFR Flight Instructions	VFR, Rwy 05 dep, turn left and maint hdg 020° til 3000' MSL, then proceed on crs. Rwy 23 dep, turn left and maint hdg 210° til 3000' MSL, then proceed on crs. Rwy 33 dep, maint rwy hdg til 3000' MSL, then proceed on crs.
IFR Flight Procedures	
Flight Profile	
Military Ops	
Reference to Backmatter	

# Example Adjusted

- As is:

No touch and go ops are permitted btn 0300–1100Z±. NS ABTMT procedures in effect are as follows, Rwy 05, turn left hdg 020° until reaching 1000', then on crs, Rwy 23, turn left hdg 210° until reaching 1000', then on crs, Rwy 33, fly rwy hdg until reaching 1000', then on crs.

- Adjusted:

**NOISE** eff 24 hrs. No maint runups btn 0300-1200Z, exc when rqr for early morning sked flt. PREF RWY USE, Rwy 23. No TGL btn 0300–1100Z. VFR, Rwy 05 dep, turn left and maint hdg 020° til 3000' MSL, then proceed on crs. Rwy 23 dep, turn left and maint hdg 210° til 3000' MSL, then proceed on crs. Rwy 33 dep, maint rwy hdg til 3000' MSL, then proceed on crs.



# Next Steps

- **Draft document ready this spring for aircraft operator and airport review**
  - Industry comments and FAA responses
  - Option to schedule web meeting to focus on specific areas of review?





# Q/A?



- **Kent Duffy**
- **FAA Airports Division (ARP)**
- [Kent.Duffy@faa.gov](mailto:Kent.Duffy@faa.gov)
- 202.267.3961

