

**AERONAUTICAL CHARTING FORUM
Charting Group
Meeting 13-02 – October 29-31, 2013**

RECOMMENDATION DOCUMENT

FAA Control # ACF-CG RD 13-02-271

Subject:

VFR Waypoints – Duplicate tabular listing in A/FD and on VFR Charts (Sectional, Terminal Area, Flyway and Helicopter Charts)

Background/Discussion:

VFR Waypoints were added to VFR Charts in 1999 and the legend was revised to “See Airport/Facility Directory for latitude/longitude.”

The VFR Waypoint information was added to each A/FD. Information on the naming convention and a caution note is provided along with the waypoint ident, collocated VFR Checkpoints, and location is listed for each waypoint on every chart. (8 pages)

In 2001 the same information provided in the A/FD was then added to a tabular listing on each VFR Chart. That information contains the naming convention and the caution note along with the waypoint ident, collocated VFR Checkpoints, and locations found on that specific chart.

Recommendations:

Amend the legends found on the VFR Charts to refer users of VFR Waypoints to the tabular listing found on that chart.

Remove the VFR Waypoint information from the A/FD (if no case is made to retain the comprehensive listing of waypoints.)

Maintain updates to VFR Waypoint information in the A/FD Aeronautical Chart Bulletin between VFR Chart publication dates.

Comments:

The need for a comprehensive VFR Waypoint listing within the A/FD supplement may no longer exist with the inclusion of this information on each individual chart.

Submitted by: Guy Copeland

Organization: FAA, AeroNav Products, VCAM, Airport Mapping & A/FD Team (AJV-322)

Phone: 301-427-5499

E-mail: guy.copeland@faa.gov

Date: June 27, 2013

A/FD VFR Waypoints section page

VFR WAYPOINTS

409

VISUAL FLIGHT RULES (VFR) WAYPOINTS

VFR Waypoint names consist of five letters beginning with "VP". Stand-alone VFR Waypoints are portrayed on VFR Charts using the same four-point star symbol currently used for Instrument Flight Rules (IFR) Waypoints.

VFR Waypoints collocated with Visual Checkpoints (Visual Reporting Points) are portrayed with a Visual Check Point flag. The VFR Waypoint name is shown in parentheses adjacent to the Visual Check Point name.

VFR Waypoint names are not intended to be pronounceable and shall not be used in ATC communications.

CAUTION: GPS accuracy necessitates extra vigilance for other aircraft when navigating near any fix retrieved from a GPS database.

BALTIMORE-WASHINGTON TERMINAL AREA CHART/FLYWAY CHART

WAYPOINT IDENT	COLLOCATED VFR CHECKPOINT	LOCATION
VPAXI	_____	N38°34.57'/W076°20.38'
VPONX	_____	N39°06.65'/W076°55.92'
VPOOP	_____	N38°56.32'/W076°36.90'

BOSTON HELICOPTER CHART

VPBAY	_____	N42°16.17'/W070°49.48'
VPBLT	_____	N42°19.67'/W070°53.40'
VPCGS	_____	N42°22.08'/W071°03.13'
VPEVS	_____	N42°23.52'/W071°04.10'
VPFEN	_____	N42°12.58'/W071°08.88'
VPFRE	_____	N42°25.03'/W071°12.32'
VPGVL	_____	N42°21.88'/W070°52.18'
VPHAM	_____	N42°30.13'/W071°07.15'
VPPIK	_____	N42°20.37'/W071°15.93'
VPQUA	_____	N42°12.10'/W071°04.78'
VPQUB	_____	N42°12.60'/W070°59.83'
VPSPF	_____	N42°24.20'/W071°09.47'
VPTOB	_____	N42°31.42'/W070°59.82'
VPWAN	_____	N42°36.88'/W071°19.45'

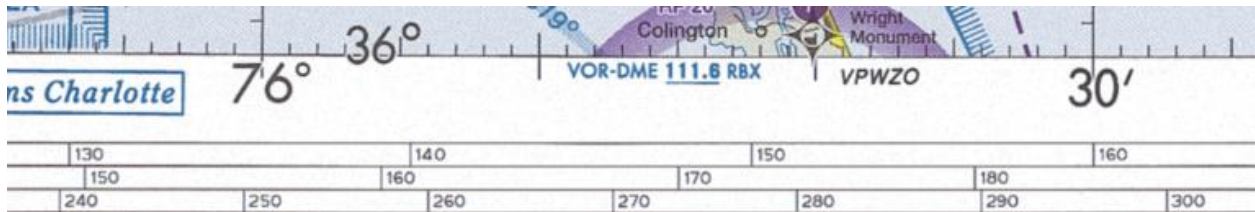
BOSTON TERMINAL AREA CHART

VPCOH	COHASSET	N42°13.58'/W070°48.94'
VPCUT	CUTTYHUNK HARBOR	N41°25.50'/W070°55.03'
VPFRA	FRAMINGHAM SHOPPING CENTER	N42°18.16'/W071°23.65'
VPHOL	WOODS HOLE	N41°31.06'/W070°40.60'
VPHUL	HULL	N42°18.20'/W070°55.30'
VPAPT	NANTUCKET GREAT POINT	N41°23.41'/W070°02.78'
VPNED	NEEDHAM TOWERS	N42°18.51'/W071°14.64'
VPPEA	PEABODY SHOPPING CENTER	N42°32.52'/W070°56.69'
VPROC	ROCKINGHAM RACE TRACK	N42°46.29'/W071°13.57'
VPSCI	SCITUATE	N42°11.89'/W070°43.69'
VPTPT	NANTUCKET THIRD POINT	N41°18.51'/W070°03.37'
VPTUC	TUCKERNUCK	N41°18.31'/W070°15.43'
VPWAK	WAKEFIELD	N42°30.72'/W071°05.24'
VPWAN	WANG TOWERS	N42°36.88'/W071°19.45'

CHARLOTTE SECTIONAL CHART

VPATO	_____	N34°37.37'/W076°31.47'
VPAVA	_____	N34°57.00'/W077°16.50'
VPBFE	_____	N32°16.38'/W080°47.50'
VPBRA	_____	N36°13.75'/W076°08.08'
VPGCE	_____	N36°03.90'/W076°36.42'
VPGHI	_____	N35°15.30'/W075°31.25'
VPGIO	_____	N35°32.50'/W076°37.33'
VPKJU	_____	N35°26.58'/W076°10.22'
VPLMN	_____	N34°55.43'/W077°46.42'
VPMAB	_____	N34°42.20'/W077°03.50'
VPNPO	ISLE OF PALMS	N32°47.78'/W079°46.45'
VPOKY	_____	N35°06.53'/W075°59.17'
VPREP	_____	N32°33.98'/W080°21.82'
VPRRS	_____	N33°25.45'/W079°07.60'
VPUMO	_____	N35°35.63'/W075°28.08'
VPWZO	_____	N36°00.87'/W075°40.07'
VPZIE	_____	N32°01.62'/W080°53.42'

Sectional Chart VFR Waypoint tabular listing, example



CAUTION: GPS accuracy necessitates extra vigilance for other aircraft when navigating near any fix retrieved from a GPS database

WASHINGTON VFR WAYPOINTS

VFR Waypoint names consist of five letters beginning with "VP". Stand-alone VFR Waypoints are portrayed on VFR Charts using the same four-point star symbol currently used for Instrument Flight Rules (IFR) Waypoints.

VFR Waypoints collocated with Visual Checkpoints (Visual Reporting Points) are portrayed with a Checkpoint flag. The VFR Waypoint name is shown in parentheses adjacent to the Visual Checkpoint name.

VFR Waypoint names are not intended to be pronounceable and shall not be used in ATC Communications.

VPACE	N38°07.82' / W076°48.75'
VPAXI	N38°34.57' / W076°20.38'
VPBRA	N36°13.75' / W076°08.08'
VPGCE	N36°03.90' / W076°36.42'
VPWZO	N36°00.87' / W075°40.07'

MINUTES ACF 13-02:

Rick Fecht, AJV-321, [briefed the topic](#). Bob Carlson, AJV-322, briefed that a listing of VFR Waypoints exists in both the AFD and on Visual Charts. This is seen as redundant publication of data and is inefficient to maintain. Bob proposed that the AFD listings be removed and the tabulation that currently appears on the VFR Chart products remain. The proposal was agreed upon by a consensus of attendees. Steps will be taken within AeroNav Products to remove the VFR Waypoint listings from the AFD. The RD is closed.

STATUS: CLOSED