

# Data Exchanges in Surface Transportation

## A Sampling

Presented to: ATIEC 2019

By: Daniel Morgan

Date: September 24, 2019

*Aviation Information World – Forecasting the Future*

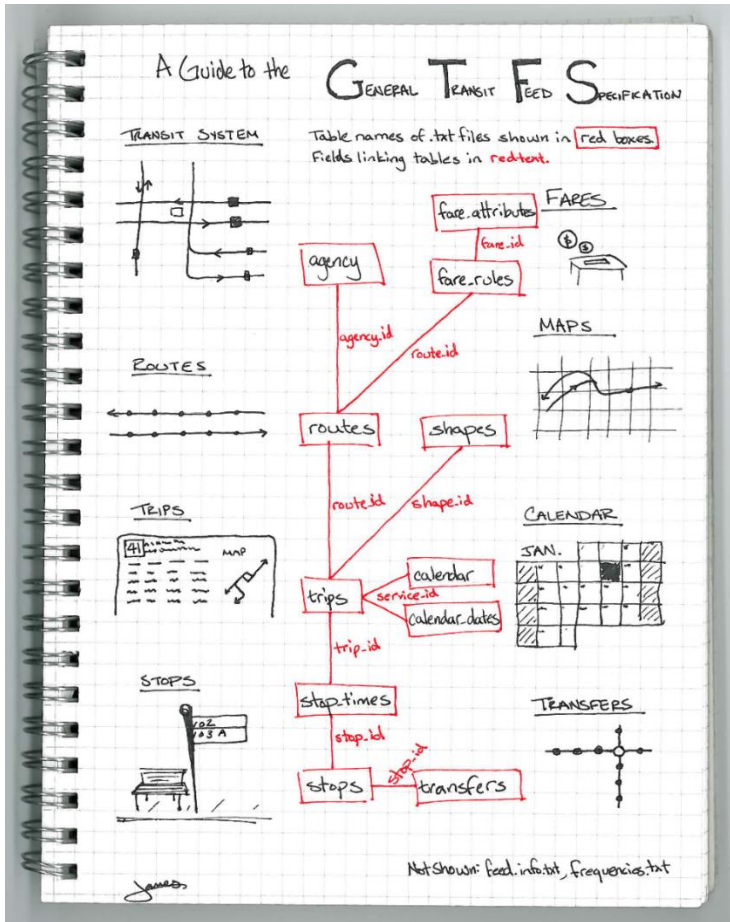


# Examples – Current and Future

- **The General Transit Feed Specification**
- **The Work Zone Data Exchange**



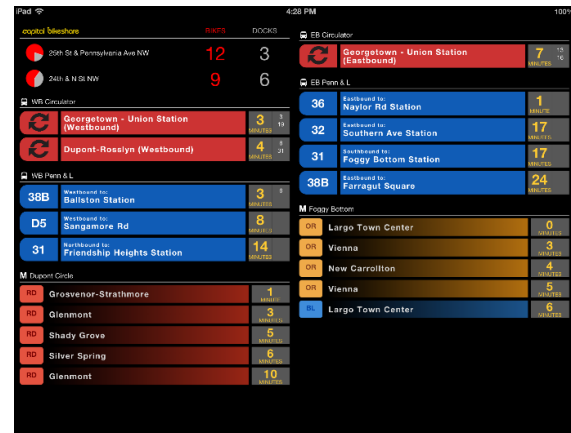
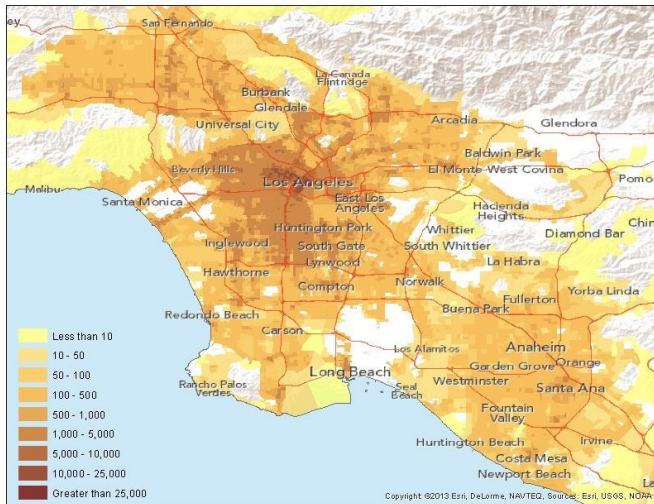
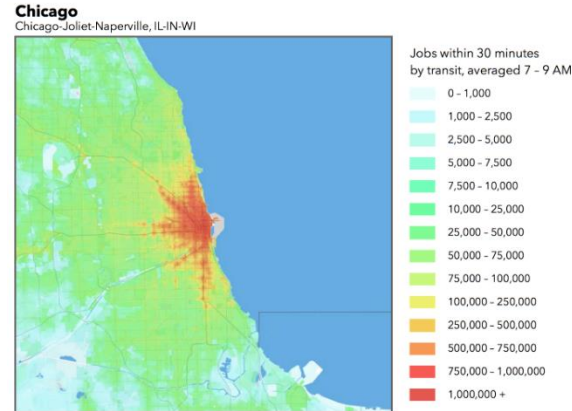
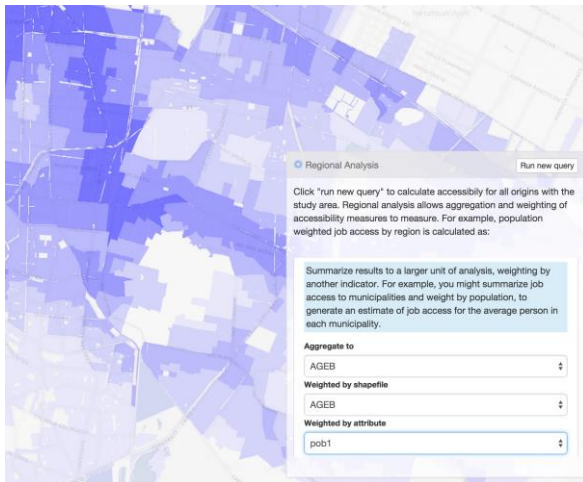
# A simple specification



- **Developed in partnership**
  - Portland TriMet
  - Google
- **Loosely specified**
  - To ease adoption
  - To facilitate a minimum viable use case



# An array of uses



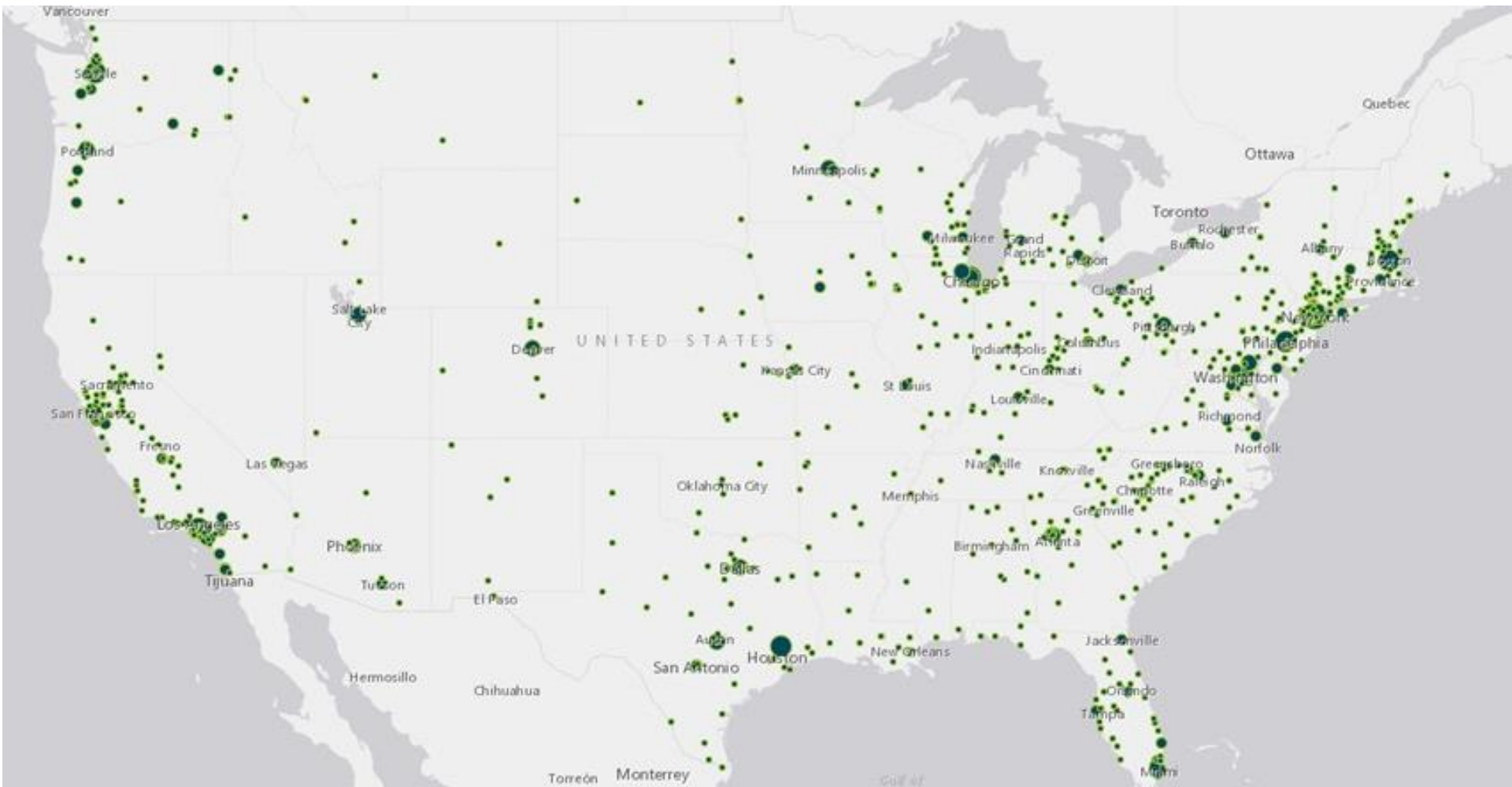
Aviation Information World - Forecasting the Future



# No single set of terms

- **Each transit agency has different terms of use. The terms do not address the same items.**
  - Some require attribution, some do not, some are silent.
  - Some allow derivative products, some prohibit it, some are silent.
  - Some allow redistribution, some prohibit it, some are silent.
  - Some assert copyright, many are silent.
- **To aggregate reliably, the Federal government needed to put a marker down.**
  - We asked for a Creative Commons Attribution License (CC-BY).
  - We asked for all other terms to be waived for our use.

# From nothing to 50% coverage



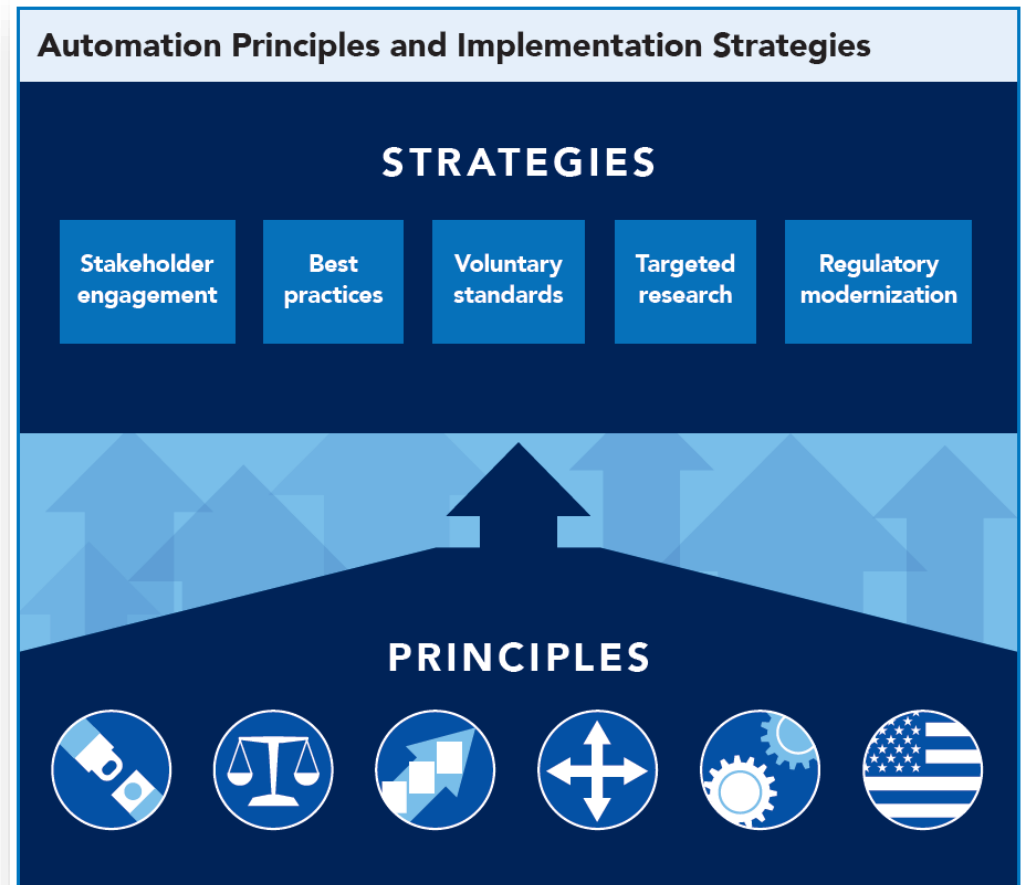


# Where does GTFS go next?

- **Where's my bus?**
  - Uses the simple specification as a baseline
  - Add new concepts
    - Service alerts
    - Trip updates
    - Vehicle positions
- **Extension and extensibility – this format works for trains, intercity buses, and more...**

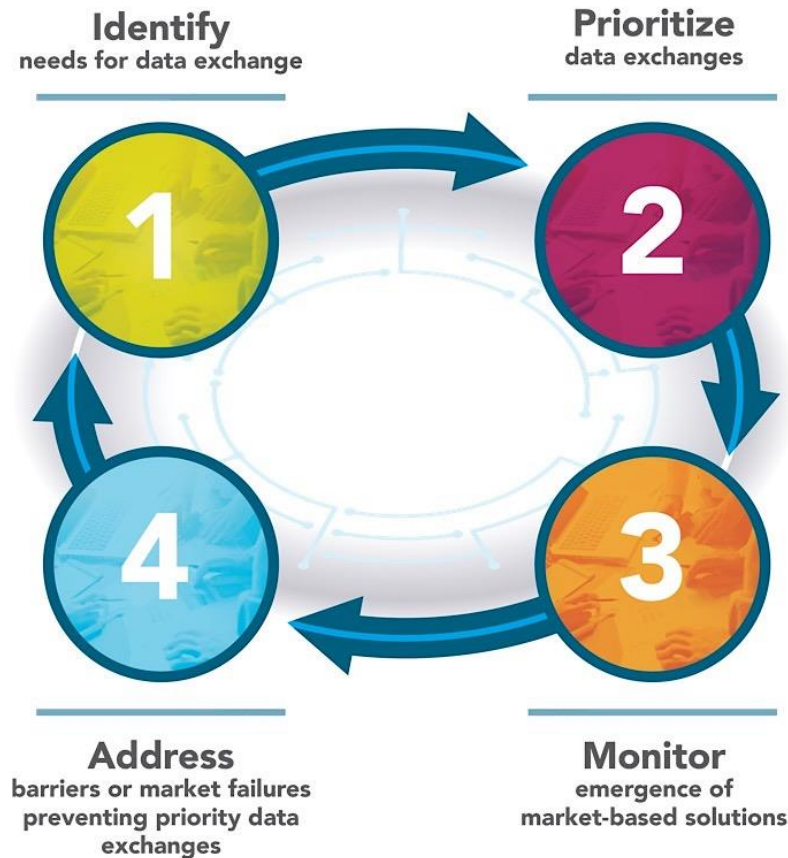
# Automated Vehicles & Data

- Provides new multimodal safety guidance, clarifies policy and roles, and outlines how to work with U.S. DOT as automation technology evolves
- Calls on stakeholders to identify opportunities for voluntary data exchanges
- Features efforts aimed at enabling voluntary data exchanges





# Data for AV Integration (DAVI)



# Safety in Work Zones

In 2017...

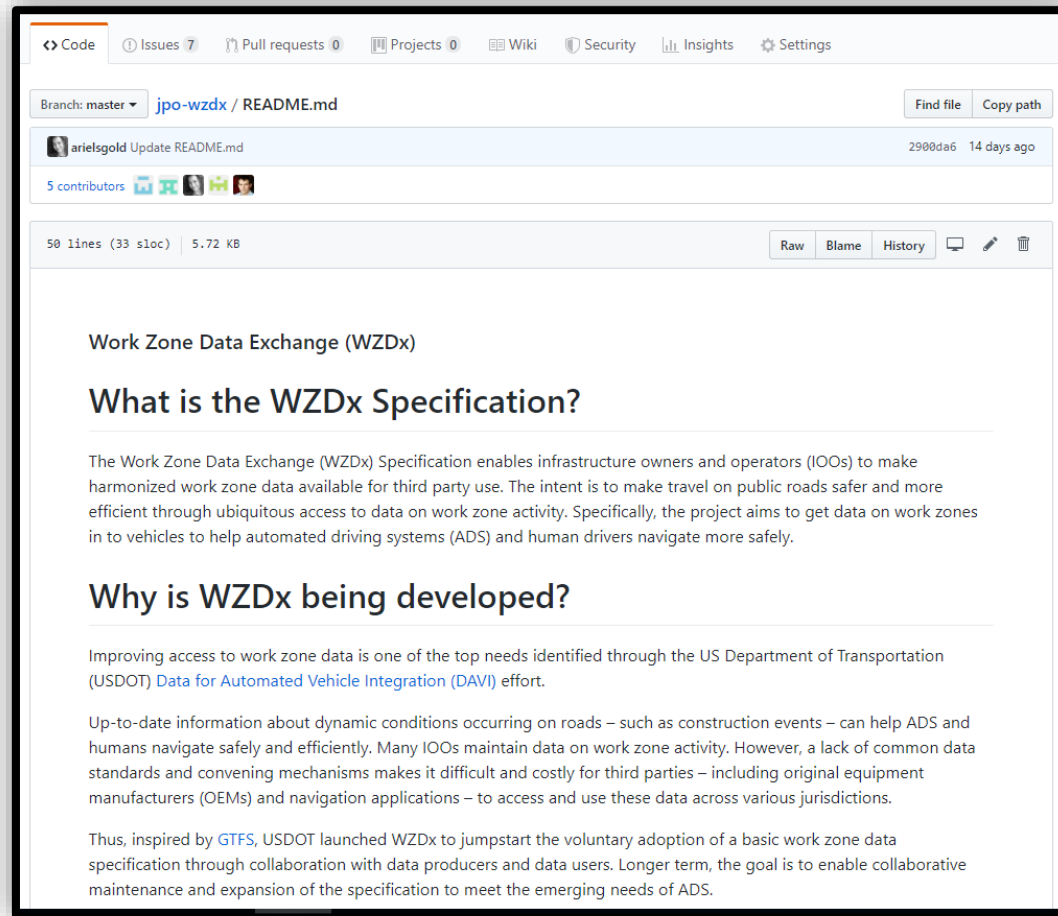
- **799 fatalities** that took place in work zones
- **2% increase** over the previous years
- **132 work zone workers** were killed
- Over **80% of fatalities** in work zones are by **drivers or passengers** just trying to navigate through a work zone

# The Work Zone Data eXchange





# The Work Zone Data eXchange



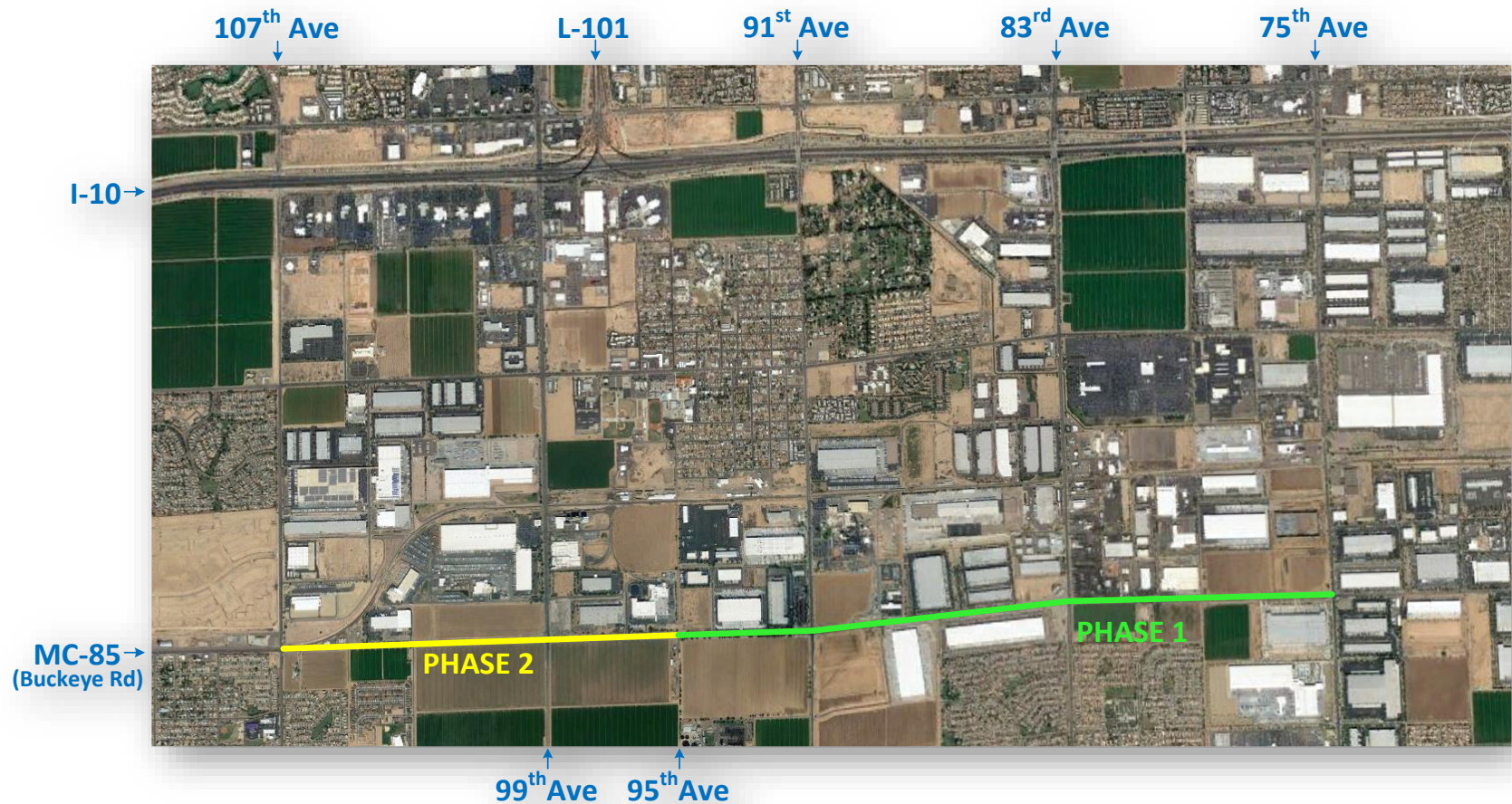
<https://github.com/usdot-jpo-ode/jpo-wzdx>



Aviation Information World - Forecasting the Future



# WZDX in Maricopa, AZ





# WZDX in Maricopa, AZ



<https://api.mcdot-its.com/WZDx/Activity/Get>



# WZDX Lessons Learned

- Immediate benefits may not be connected to ADS.
- Map developers are the primary data users.
- It's difficult for infrastructure owner-operators to set up feeds.
- There are multiple potential starting points for generating harmonized feeds.
- There are many potential organizations and mechanisms to drive this vision forward.



Aviation Information World - Forecasting the future



# What will you work on next?

