

A-CDM Asia (Suvarnabhumi Airport – Bangkok, Thailand)



A-CDM Asia (Suvarnabhumi Airport - Bangkok Thailand)

A-CDM Status in Thailand

**A-CDM Implementation
& Challenges**

Next Step

A-CDM Status in Thailand

Local A-CDM

- Suvarnabhumi Airport
- Don Mueang Airport

Issuing TSAT based on TOBT received

A-CDM Implementation



2016

Study A-CDM (Oct)



2017

GAP analysis
System design
Meeting with AOC and Handling



2018

Introduce PDS (iDEP)
Workshop with Stakeholders
Trial Operation Phase 1 and 2



2019

Implementation of A-CDM
(Phase 3)

iDEP
Intelligent Departure Enhancement Program

Mode of operation: Day 15L Air 13R
Filter: VALUE SEPARATED BY COMMA (,)

Suvamabhum International Airport
Time: 10:29:13

Callign	EOBT		Parking Stand	TOT	TSAT	CTOT	Remark
TH4658	1040	✓	203	1040(5)	1114	1130	
MM3336	1040		06	1044(5)	1059		
TH4654	1045	✓	306	1045(5)	1102		
TH4646	1045	✓	303	1050(5)	1104		
TH4625	1045	✓	E10	1055(5)	1104		
TH4612	1045	✓	E9	1055(5)	1108		
UBA220	1100		402	1100(5)	1108		
BKPS47	1100		101L	1102(5)	1120		
CPA750	1105		E5	1105(5)	1115		
MAS765	1105		502	1106(5)	1114		
TVJ840	1110		506	1110(5)	1118		
TH4004	1110		109	1110(5)	1127		
BKPS39	1115		106R	1115(5)	STBY		
TH4413	1115	✓	203	1115(5)	STBY		
CALE34	1115		505	1120(5)	STBY	1130	
TH4570	1120		122	1122(5)	STBY		Your TOT may be too late to achieve CTOT
TH4273	1120		123	1126(5)	STBY		

Challenges

Engagement

Encouraging all stakeholders to recognize the importance and benefits of implementation.

The distribution/accessibility channels for information are not comprehensive. (No A-CDM Platform, No VDGS at gate)

Challenges

Promoting a common understanding among stakeholders.

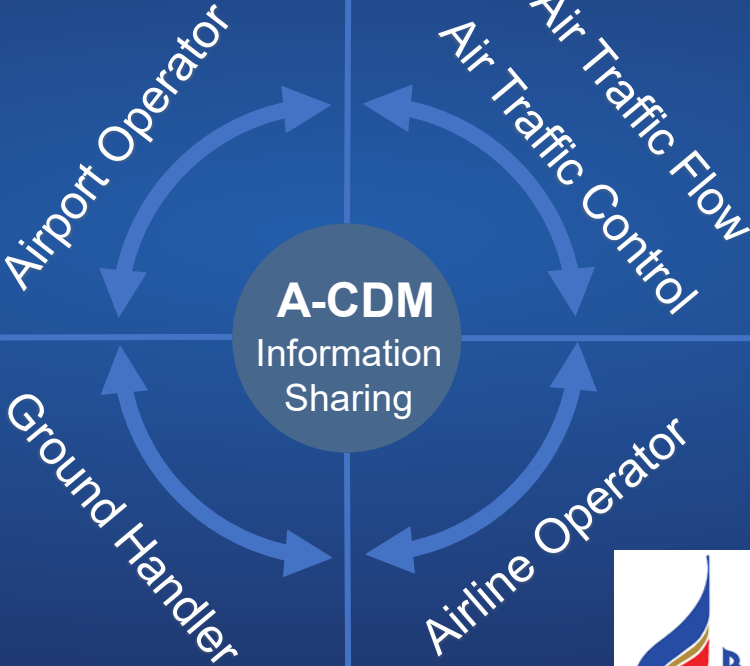
Workaround solutions for operational practices.

A-CDM Stakeholders

Aeronautical Radio of Thailand Ltd.



Airport of Thailand LPC. (AOT)



iDEP Suvarnabhumi International Airport
Time: 1029 LT

Mode of operation : Dep 19L Arr 19R

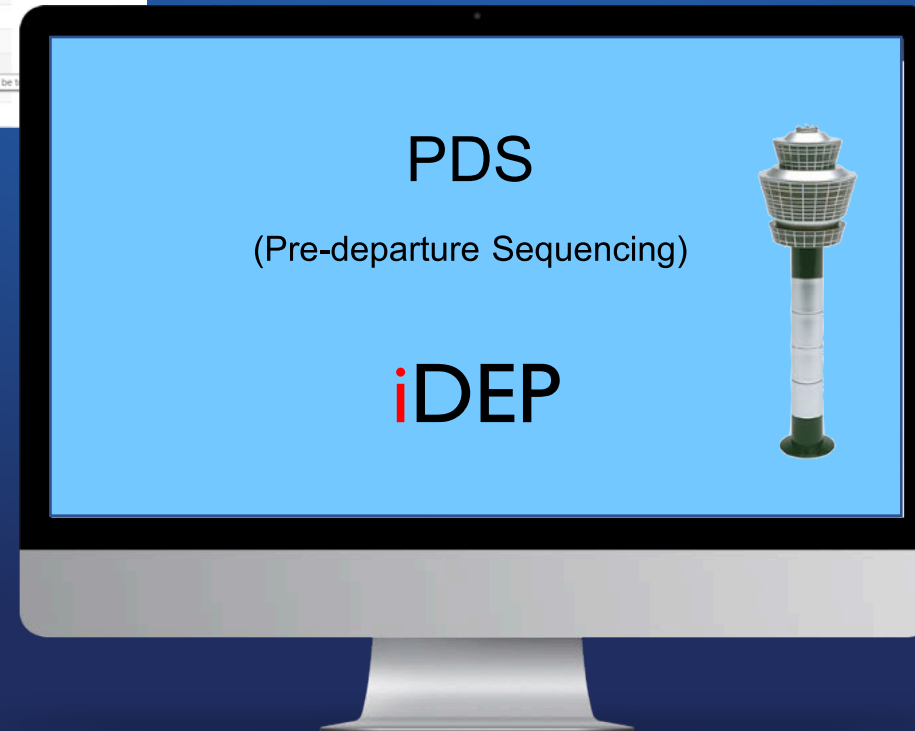
Filter: VALUE SEPARATED BY COMMA (,)

Callsign	EOBT	Parking Stand	TOBT	TSAT	CTOT	Remark
THA668	1040	203	1040(5)	1114	1130	
MMA336	1040	D6	1044(5)	1059		
THA664	1045	306	1045(5)	1102		
THA646	1045	303	1050(5)	1104		
THA628	1045	E10	1055(5)	1104		
THA612	1045	E9	1055(5)	1106		
UBA020	1100	402	1100(5)	1108		
BKP947	1100	101L	1102(5)	1120		
CPA750	1105	E6	1105(5)	1115		
MA5785	1105	502	1106(5)	1114		
TVJ940	1110	506	1110(5)	1118		
THD004	1110	109	1110(5)	1127		
BKP909	1115	106R	1115(5)	STBY		
THA413	1115	203	1115(5)	STBY		
CAL834	1115	505	1120(5)	STBY	1130	Your TOBT may be
THD070	1120	122	1122(5)	STBY		
THD273	1120	123	1126(5)	STBY		

TOBT

: Target Off-Block Time

Parking Stand



PDS

(Pre-departure Sequencing)

iDEP

iDEP Suvarnabhumi International Airport

Mode of operation : Dep 19L Arr 19R

Filter: VALUE SEPARATED BY COMMA (,)

Callsign	AC Type	Stand	EOBT	SID	RWY	TOBT	ETOT	TTOT	CTOT	EXOT	TSAT	Flag	Color
THA221	B744	102	1815	SABIS2J	19L	1835	1843	1843		8	1835		
THD267	A320	A6	1835	KASN1J	19L	1840	1848	1848		8	1840		
THA574	A333	A3	1835	ALBOS1J	19L	1840	1846	1850	1850	6	1840	CT1850	
THA556	A333	203	1815	GORS1J	19L	1840	1851	1851		11	1840		
THA636	B772	303	1820	UPKUP1J	19L	1845	1856	1858		13	1845		
BKP907	A320	101L	1820	GORS1J	19L	1850	1858	1900		8	1850		
BKP263	A319	A2	1835	SABIS2J	19L	1900	1906	1906		6	1900		
EVA6071	B744	102	1820	ALBOS1J	19L	1900	1908	1908		8	1900		
THD419	A320	103	1825	KASN1J	19L	1900	1909	1910		9	1900		
HBH3518	B737	D5	1825	ALBOS1J	19L	1900	1914	1914		14	1900		
THD046	A320	505	1825	ROBKA1J	19L	1900	1918	1918		18	1900		
THA602	A333	103	1830	UPKUP1J	19L	1900	1909	1930	1930	9	1916	CT1930	
BKP227	A320	103	1855	TANGOLJ	19L	1920	1929	1934		9	1921		
CSN364	B38M	307	1855	ROBKA1J	19L	1920	1933	1936		13	1920		
JSA518	A320	F2	1900	KIGOB1J	19L	1920	1937	1938		17	1920		
CAL836	A333	D8	1900	UPKUP1J	19L	1920	1933	1940		13	1923		
THA349	A333	D7	1900	OSUKA1J	19L	1925	1939	1942		14	1925		
CSN3060	B738	D7	1905	NOBERTJ	19L	1930	1944	1944		14	1930		

TSAT

: Target Start-Up Approval Time

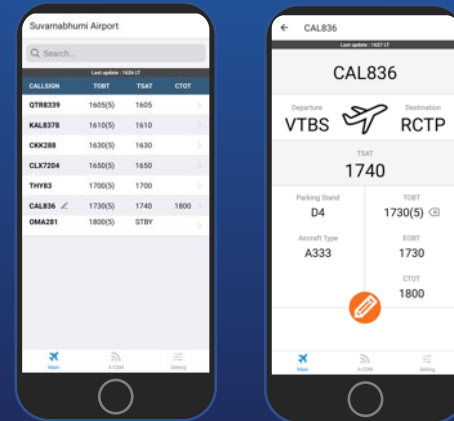
Data distribution (by Aerothai)



Web-based application



Mobile application



SMS via Digital trunked radio



Mode of operation : Dep 19R Arr 19L

Filter

VALUE SEPARATED BY COMMA (,)

Search

Acknowledge All



Arrival

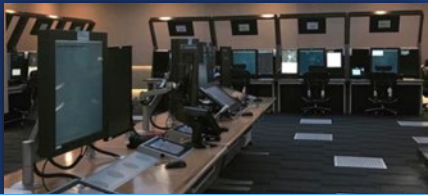


Departure

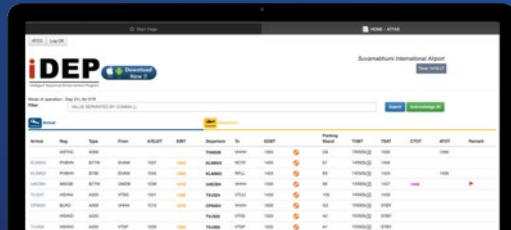
Arrival	Reg	Type	From	A/ELDT	EIBT	Departure	To	EOBT	Parking Stand	TOBT	TSAT	CTOT	ATOT	Remark
MMA335	XYAGV	A319	VYYY	0938	0946	MMA336	VYYY	1025	F3	1100(3)	1100		1103	
TAX811	HSXTC	A333	ZGSZ	0921	0934	TAX920	OMSJ	1030	524	1045(4)	1045		1057	
TFT202	HSSPL	C208	KO MAI SI TRAT PROVINCE	0929	0937	TFT205	KO MAI SI TRAT PROVINCE	1040	119L	1040(5)	1040		1050	
THD206	HSTXS	A320	VTSP	0935	0941	THD255	VTST	1040	B1	1040(5)	1040		1047	
TVJ321	HSVKD	A320	VTSS	1000	1008	TVJ3970	VVTS	1050	F1	1125(3)	1125		1139	
CAL833	B18303	A333	RCTP	0940	0951	CAL834	RCTP	1055	G4	1055(5)	1055		1100	
THA669	HSTHG	A359	ZGGG	0737	0745	THA321	VGHS	1055	C2	1055(5)	1055		1108	
AIQ4103	HSCBA	A320	VTCC	1003	1009	AIQ4110	VTSP	1055	A1	1055(5)	1055		1105	
TVJ315	HSVKN	A320	VTSP	1025	1033	TVJ346	VTSG	1100	A6	1120(4)	1120		1124	
UAE9889	A6EFO	B77L	ZSPD	1005	1018	UAE9889	VABB	1120	522	1130(4)	1130		1144	
TVJ115	HSVKB	A320	VTCC	1029	1034	TVJ324	VTSS	1120	B4	1113(4)	1113		1129	
THD260	HSTXG	A320	VTSS	1018	1023	THD042	VTUK	1130	B2	1130(5)	1130		1131	
AIQ4407	HSBBE	A320	VTCT	1042	1048	AIQ4402	VTSG	1135	B3	1135(5)	1135		1141	
	HSPZG	AT76				BKP305	VTBO	1140	110L	1135(5)	1135		1142	
KMI601	HSKMD	B738	VVNB	1032	1043	KMI621	ZGNN	1155	518	1150(5)	1150		1151	
TGW606	9VOFB	B788	WSSS	1043	1052	TGW607	WSSS	1155	F5	1155(5)	1155			
TVJ371	HSVQK	A320	VTSF	1119	1125	TVJ330	VTSF	1155	B1	1155(5)	1155			
	HSPZD	AT76				BKP5275	VTSP	1200	129R	1155(5)	1155			
	HSPPU	A319				BKP5125	VTSM	1200	102R	1145(4)	1145			
EVA211	B16731	B77W	RCTP	0957	1008	EVA212	RCTP	1210	514	1200(5)	1200			

AEROTHAI & AOT Data Exchange

Flight Data Management System



ATC System



PDS

Aerothai

ATS Messages (include ATOT, ALDT etc.,)

ELDT, ALDT, ATOT

SOBT, SIBT,
Parking Stand, AOBT, AIBT

TOBT, TSAT, TTOT, CTOT



AODB

Airport Operational Database

AOT

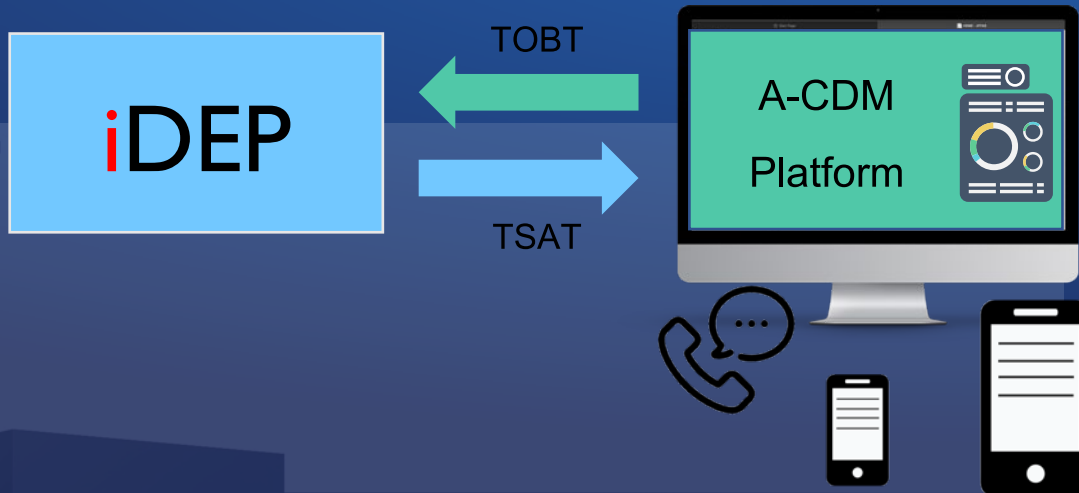
Data until MAY 2023

Next Step

1

Transitioning

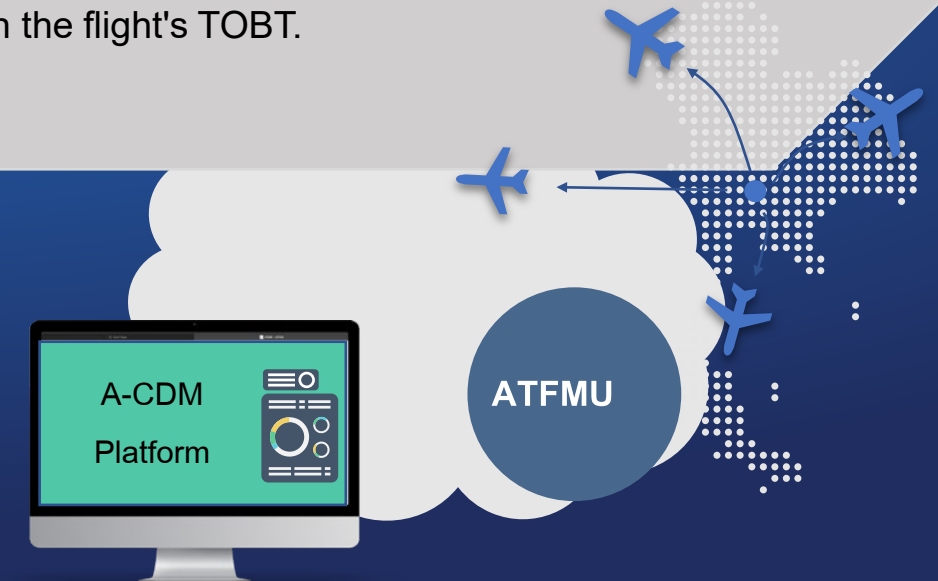
Utilizing the A-CDM platform operated by the airport and integrating data from the ATC system (ASRT, ASAT) to ensure complete and comprehensive 16-milestone A-CDM data.



2

ATFM/A-CDM Integration

Integrating the A-CDM system with the ATFM system to incorporate data from the ATFM system as a key factor in calculations (primarily using CTOT). Additionally, sending TOBT data to the ATFM system to trigger CTOT changes that align with the flight's TOBT.

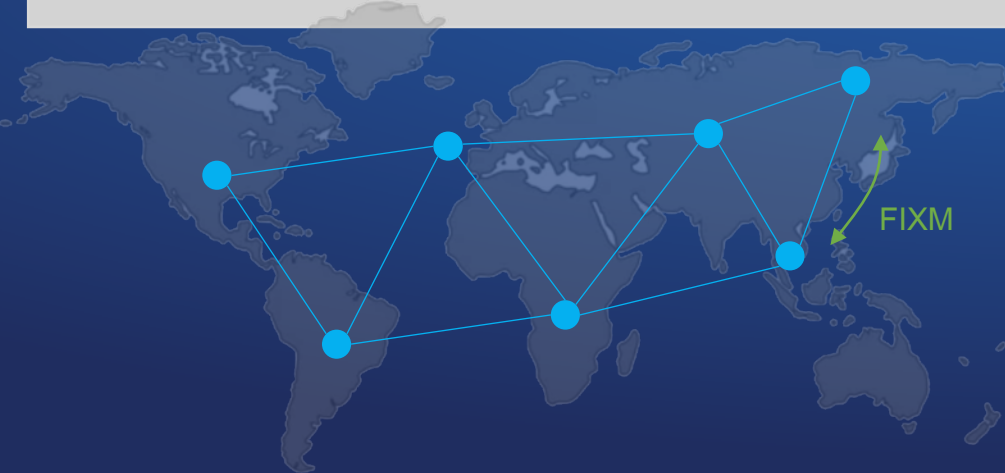


Next Step

3

Connect to SWIM

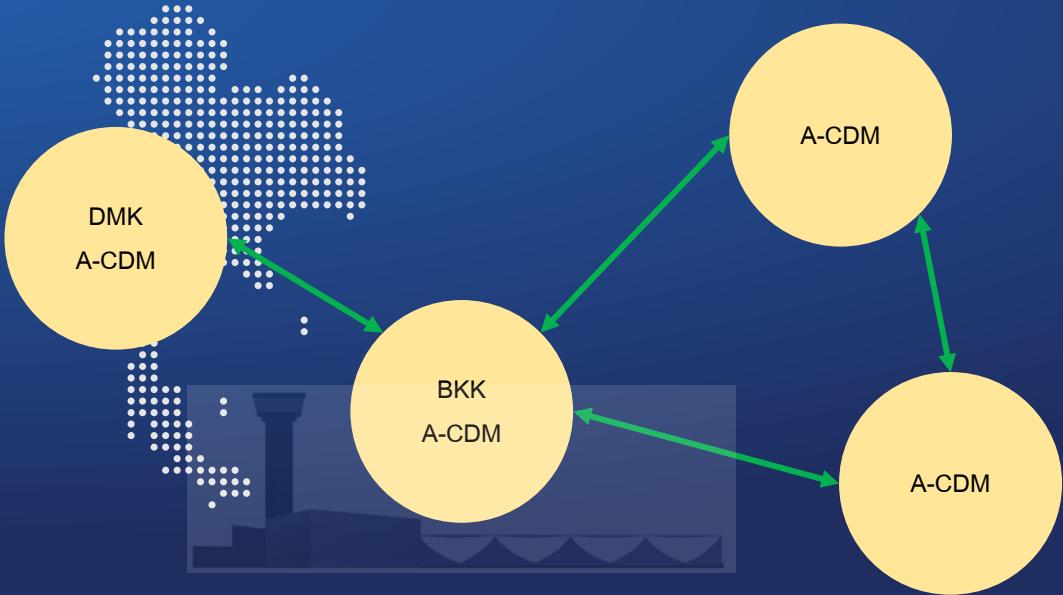
Currently, the utilization of AMHS (Aeronautical Message Handling System) for transmitting data from the ATFM system at the regional level, through the CRV concept, is being implemented as part of the SWIM development. ATFM will connect to SWIM in late June 2023



4

Connect to Regional

Connecting A-CDM system to SWIM and exchange data at the regional level between countries in Asia.





Thank You!

ATIEC 2023

AIR TRANSPORTATION INFORMATION EXCHANGE CONFERENCE