



Federal Aviation Administration

SAFETY ALERT

Date: January 24, 2022

To: Users of: U.S. Terminal Procedures Publication (TPP) Vol NE-1
And digital-Terminal Procedures Publication (d-TPP)

From: Aeronautical Information Services (AIS)

Subject: Corrected chart for RNAV (GPS) RWY 18, Amdt 2A at Portland INTL Jetport
(PWM), Portland, ME

The RNAV (GPS) RWY 18 chart at Portland INTL Jetport (PWM), Portland, ME, depicts the coastline incorrectly in the Terminal Procedure Publication, NE-1 volume and the digital-Terminal Procedures Publication, effective December 30, 2021 (2113) and January 27, 2022 (2201). The corrected chart will be published on February 24, 2022.

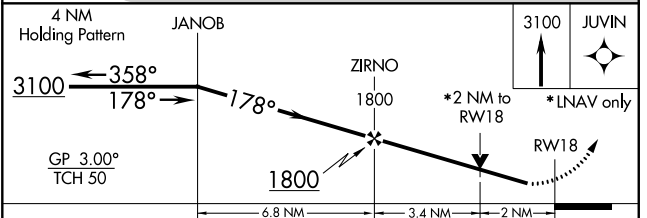
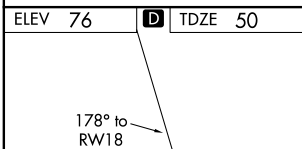
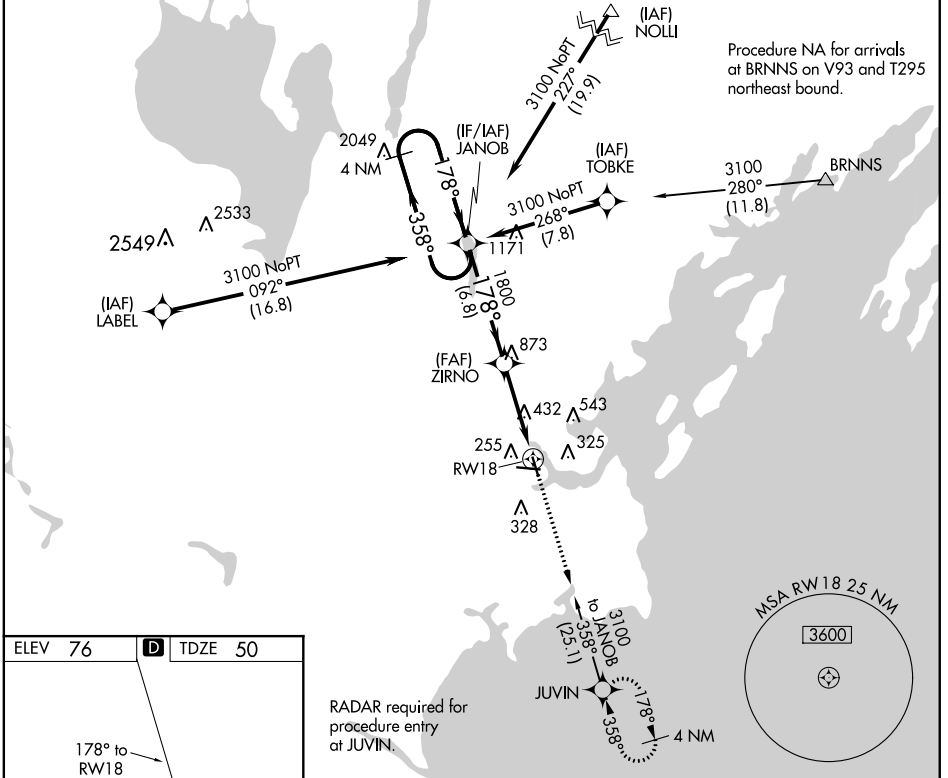
Attached is the correct file for RNAV (GPS) RWY 18, AMDT 2A at Portland INTL Jetport (PWM), Portland, ME.

WAAS CH 77925 W18A	APP CRS 178°	Rwy Idg TDZE Apt Elev	5150 50 76
--	------------------------	-----------------------------	---------------------------------------

RNAV (GPS) RWY 18

PORTLAND INTL JETPORT (P^{WM})

RNP APCH.		MISSED APPROACH: Climb to 3100 direct JUVIN and hold, continue climb-in-hold to 3100.	
▼ For uncompensated Baro-VNAV systems, LNAV/VNAV NA below -19°C (-2°F) or above 54°C (130°F). Rwy 18 helicopter visibility reduction below ¾ SM NA.			
ATIS 119.05	PORTLAND APP CON ★ 119.75 269.35	PORTLAND TOWER ★ 120.9 (CTAF) 257.8	GND CON 121.9
		CLNC DEL 121.9	UNICOM 122.95



CATEGORY	A	B	C	D
LPV DA		300-¾	250 (300-¾)	
LNAV/VNAV DA		477-1½	427 (500-1½)	
LNAV MDA	740-1	690 (700-1)	740-2	690 (700-2)
C CIRCLING	740-1	664 (700-1)	740-2	860-2½ 784 (800-2½)

- TDZ/CL Rwy 11 **(L)**
- MIRL Rwy 18-36 **(L)**
- HIRL Rwy 11-29 **(L)**
- REIL Rwy 18 and 36 **(L)**

CORRECTED COPY NE-1, 30 DEC 2021 to 24 FEB 2022

CORRECTED COPY NE-1, 30 DEC 2021 to 24 FEB 2022