



Federal Aviation Administration

SAFETY ALERT

Date: September 18, 2023

To: Users of the U.S. Terminal Procedures Publication (TPP) Vol NE-1
And digital-Terminal Procedures Publication (d-TPP) (2310)
And XML (d-TPP_Metafile.xml)

From: Aeronautical Information Services (AIS)

Subject: RNAV (GPS) RWY 27, AMDT 1A at General Edward Lawrence Logan
Intl, Boston, MA (BOS)

Effective October 5, 2023, the RNAV (GPS) RWY 27, AMDT 1A amendment was not applied. The chart was incorrectly published as RNAV (GPS) RWY 27, AMDT 1.

Please see the corrected depiction on the attached file. The corrected chart will be published on November 2, 2023.

SEP 2023 Published by the
U.S. DEPARTMENT OF TRANSPORTATION TERM 23-04 SA
Federal Aviation Administration

View Aeronautical Information Services [Safety Alerts and Charting Notices](https://www.faa.gov/air_traffic/flight_info/aeronav/safety_alerts/) at
(https://www.faa.gov/air_traffic/flight_info/aeronav/safety_alerts/)
for awareness of chart and data corrections. A page subscription service is available.

For awareness or participation in a public forum to identify issues concerning safety and usefulness of aeronautical charts and flight information products/services, and discuss change proposals to specifications and methodologies visit [Aeronautical Charting Meeting \(Chart Group\)](https://www.faa.gov/air_traffic/flight_info/aeronav/acf/) at (https://www.faa.gov/air_traffic/flight_info/aeronav/acf/).
A page subscription service is available.

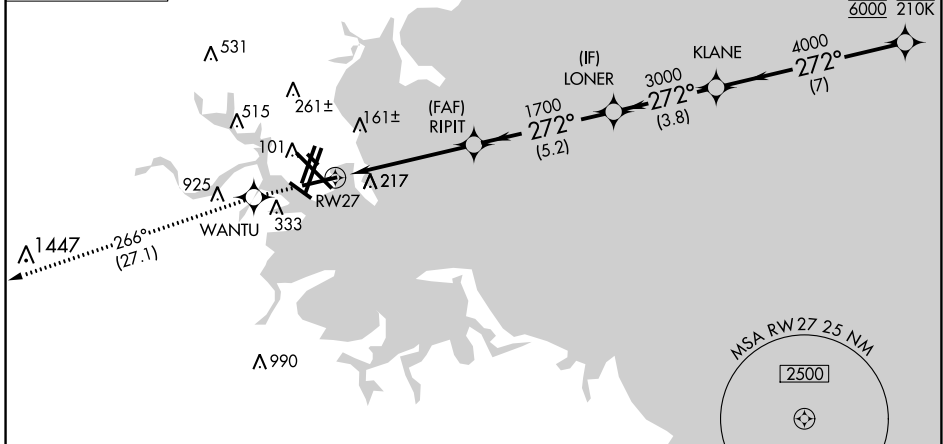
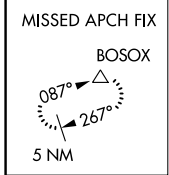
For aeronautical data or charting inquiries visit the [Aeronautical Information Portal](https://nfdc.faa.gov/nfdcApps/controllers/PublicSecurity/nfdcLogin)
(<https://nfdc.faa.gov/nfdcApps/controllers/PublicSecurity/nfdcLogin>)

APP CRS	Rwy Idg	7001
272°	TDZE	17
	Apt Elev	19

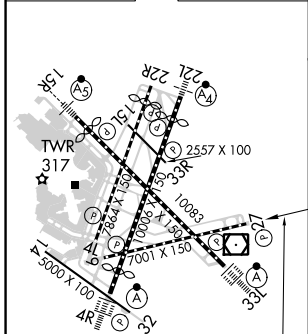
RNAV (GPS) RWY 27

GENERAL EDWARD LAWRENCE LOGAN INTL (BOS)

RNP APCH - GPS.		<p>▼ For uncompensated Baro-VNAV systems, LNAV/VNAV NA below -1.5°C or above 54°C. Circling NA to Rwy 14.</p> <p>▲ Circling NA for Cats C and D west of Rwys 4L and 15R.</p>		<p>MISSED APPROACH: Climb to 3000 direct WANTU and on track 266° to BOSOX and hold.</p>	
D-ATIS	BOSTON APP CON	BOSTON TOWER	GND CON	CLNC DEL	CPDLC
135.0	120.6 263.1	128.8 257.8 (WEST) 132.225 257.8 (EAST)	121.9 121.75	121.65 257.8	



ELEV 19	D	TDZE 17
---------	---	---------



TDZ/CL Rwys 4R, 15R and 33L

REIL Rwys 4L, 27 and 32

MIRL Rwy 15L-33R

HIRL Rwys 4L-22R, 4R-22L, 9-27, 14-32 and 15R-33L

3000	WANTU	tr 266°	BOSOX	VGSI and RNAV glidepath not coincident (VGSI Angle 3.00/TCH 57).	AYBEE	
				KLANE	6000	
			RIPIT	LONER		
		1.7 NM to RW27	1700	3000	4000	
			1700		GP 3.00° TCH 57	
		1.7 NM	3.4 NM	5.2 NM	3.8 NM	7 NM
CATEGORY	A		B		C	D
LNAV/VNAV DA	510-1 3/8 493 (500-1 3/8)					
LNAV MDA	640-1 1/2 623 (700-1 1/2)		640-1 3/4 623 (700-1 3/4)			
CIRCLING	940-1 1/4 921 (1000-1 1/4)		1040-1 1/2 1021 (1100-1 1/2)		640-1 3/4 621 (700-1 3/4)	640-2 621 (700-2)

CORRECTED COPY NE-1, 05 OCT 2023 to 02 NOV 2023

CORRECTED COPY NE-1, 05 OCT 2023 to 02 NOV 2023