



FLY-IN



SEPTEMBER 13-15, 2018

SANTA FE MUNICIPAL AIRPORT (SAF)
SANTA FE, NM

NOTAM

SPECIAL FLIGHT PROCEDURES

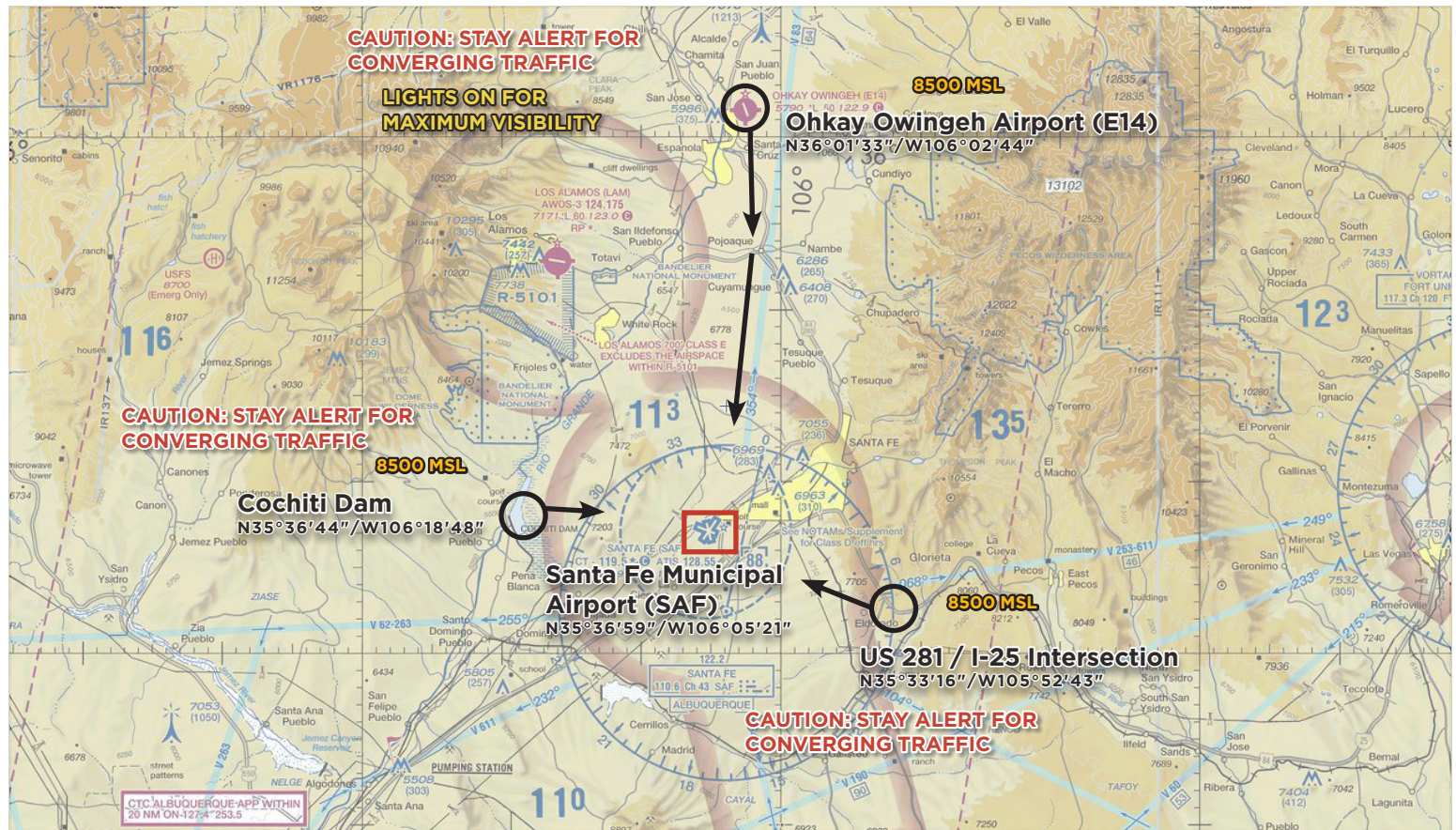
EFFECTIVE:

Thursday	Sept 13, 2018	12:00 NOON	MDT	until	7:00 PM MDT
Friday	Sept 14, 2018	7:00 AM	MDT	until	7:00 PM MDT
Saturday	Sept 15, 2018	7:00 AM	MDT	until	6:00 PM MDT

ALBUQUERQUE APP WITHIN
NM ON-127.4-253.5



VFR ARRIVALS OVERVIEW



Santa Fe ATIS 128.55

Santa Fe Tower 119.5

Santa Fe Ground 121.7

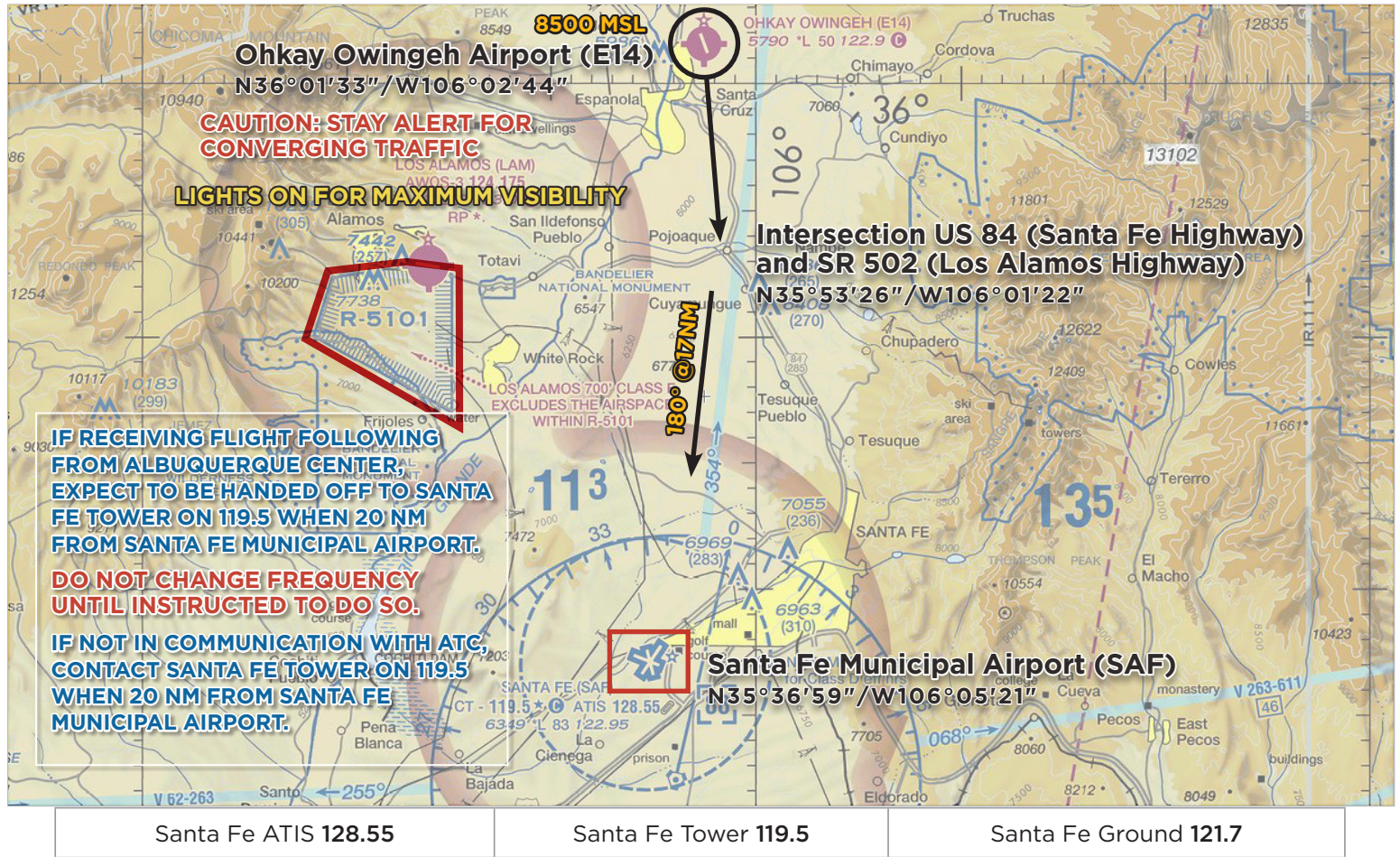
TEMPORARY VFR PROCEDURES

Specific procedures contained within this NOTAM may be revised at the time of the event. Pilots are urged to review all applicable NOTAMs and arrival/departure procedures prior to conducting a flight to Santa Fe Municipal Airport. Users are encouraged to check NOTAMs frequently to verify they possess the most current revisions. This NOTAM does not supersede restrictions pertaining to the use of airspace contained in FDC NOTAMS.

ALL VFR ARRIVALS BEGIN AT:

- Ohkay Owingeh Airport (E14)**, 25 NM north of Santa Fe Municipal Airport (SAF), or
- Cochiti Dam**, 11 NM west of Santa Fe Municipal Airport (SAF), or
- US 281/I-25 Intersection near Eldorado**, 11 NM miles southeast of Santa Fe Municipal Airport (SAF).

VFR PROCEDURES - Arrivals over Ohkay Owingeh Airport (E14)



FLIGHT FOLLOWING

Pilots are strongly encouraged to obtain flight following from the appropriate ATC facility at a minimum of 100 NM from Santa Fe Municipal Airport.



CHECK ATIS ON 128.55 AS SOON AS PRACTICAL.

This procedure begins over Ohkay Owingeh Airport (E14) at **8500** feet MSL. From Ohkay Owingeh Airport, follow US 84 (Santa Fe Hwy) south toward the intersection of US 84 and SR 502 (Los Alamos Hwy).



CAUTION: Stay alert for converging aircraft.

If receiving flight following from Albuquerque Center, expect to be handed off to Santa Fe Tower on **119.5** when **20** NM from Santa Fe Municipal Airport. **Do not change frequency until instructed to do so.** If **not** already in communication with ATC, contact Santa Fe Tower on **119.5** when **20** NM from Santa Fe Municipal Airport.

From the intersection of US 84 (Santa Fe Hwy) and SR 502 (Los Alamos Hwy), fly an approximate heading of **180°** toward Santa Fe Municipal Airport, or if traffic volume requires holding, follow instructions from Santa Fe Tower on **119.5** and expect to fly the hold procedure as depicted in the **LOS ALAMOS HWY VFR HOLD GRAPHIC**. (See graphic on page 3) All aircraft should fly right turns at 8500 feet MSL. Westbound aircraft should remain south of the Los Alamos Hwy. Eastbound aircraft should remain north of the Los Alamos Hwy.



CAUTION: Stay alert for converging aircraft.

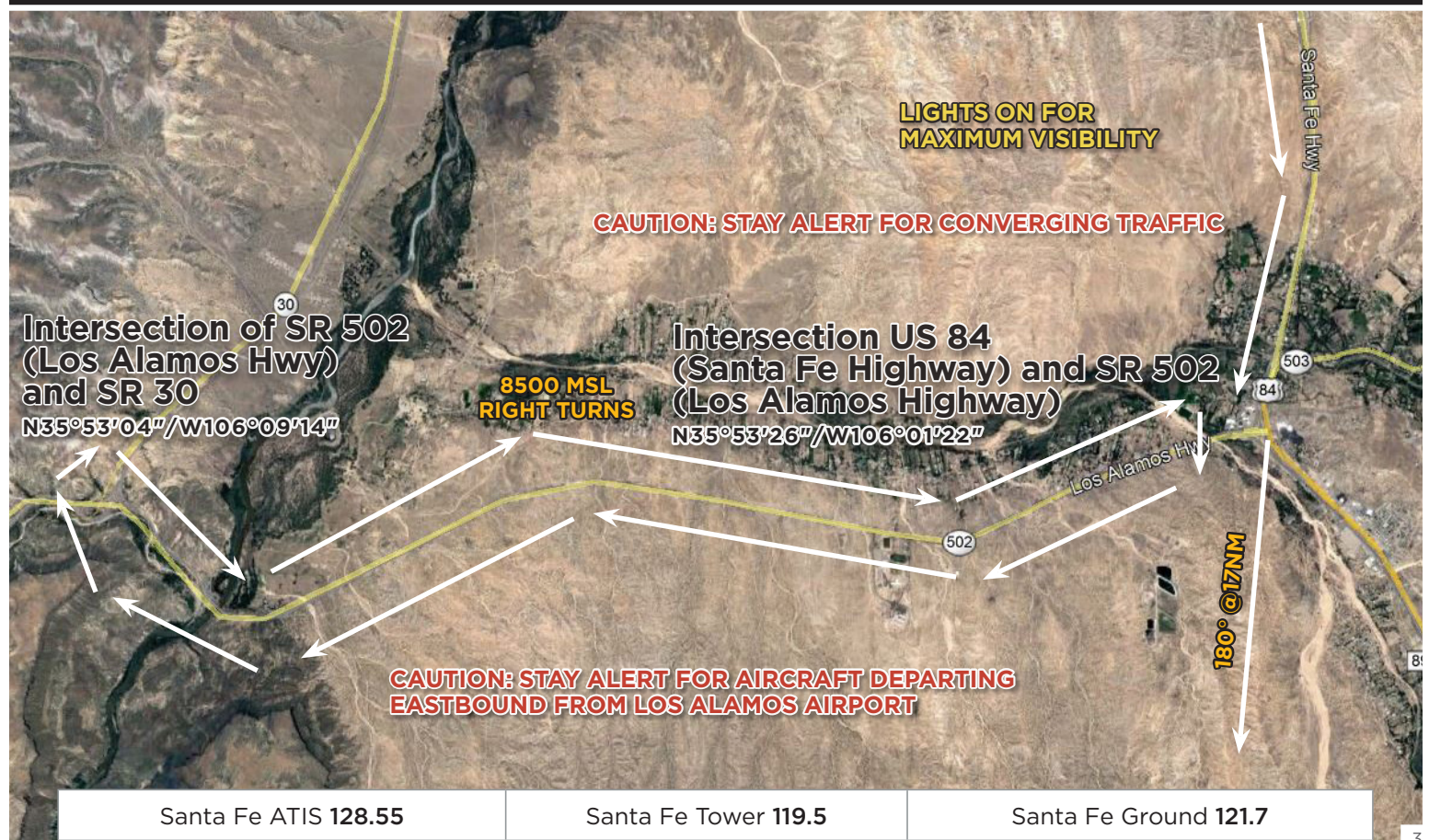
When Santa Fe Tower announces that holding is no longer required, aircraft should proceed inbound from the intersection of US 84 (Santa Fe Hwy) and SR 502 (Los Alamos Hwy), toward Santa Fe Municipal Airport (SAF). Begin descent as directed by ATC or at pilot's discretion. Aircraft in the hold should complete the hold before proceeding inbound toward SAF. Exit the hold over the intersection of US 84 and SR 502.

Follow landing instructions from Santa Fe Tower on **119.5**.

SAF TPA: 7350 feet MSL light aircraft; 7850 feet MSL multi-engine/turbine aircraft

After landing, do not stop on the runway unless necessary. Exit the runway as quickly and as safely as possible at the first available taxiway or closed runway east of runway **2/20** or as instructed by Santa Fe Tower. Continue far enough forward so as not to block subsequent arrivals. **UNLESS OTHERWISE INSTRUCTED BY SANTA FE TOWER**, continue to taxiway **A** or **D** and MONITOR Santa Fe Ground on **121.7**. Marshalls will guide you to a parking space once you have arrived in the non-movement/aircraft parking area.

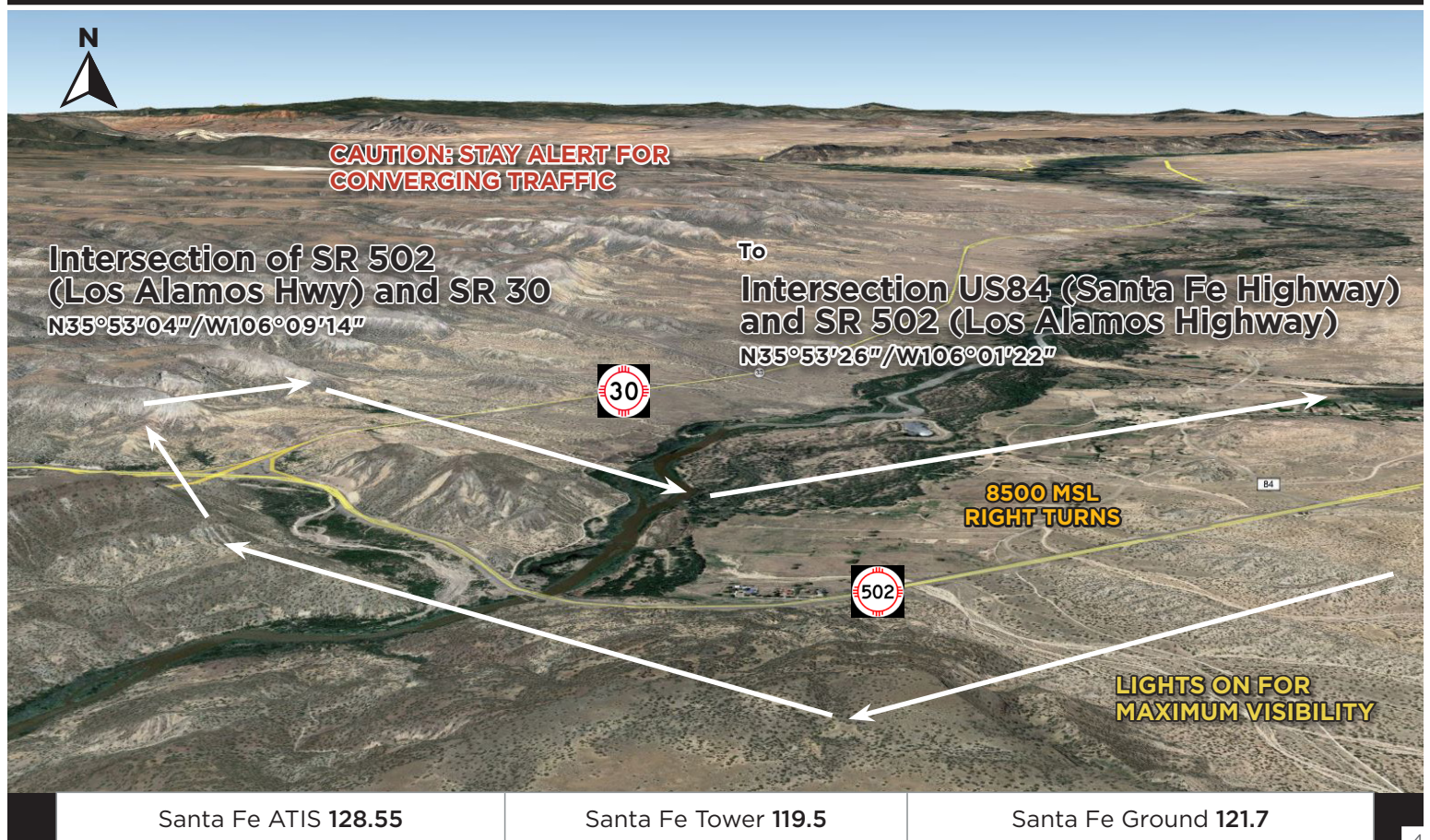
Runway 2/20 is long enough to accommodate two single engine aircraft simultaneously. Aircraft might be instructed to land while another aircraft is still exiting the runway. Follow instructions from Santa Fe Tower.



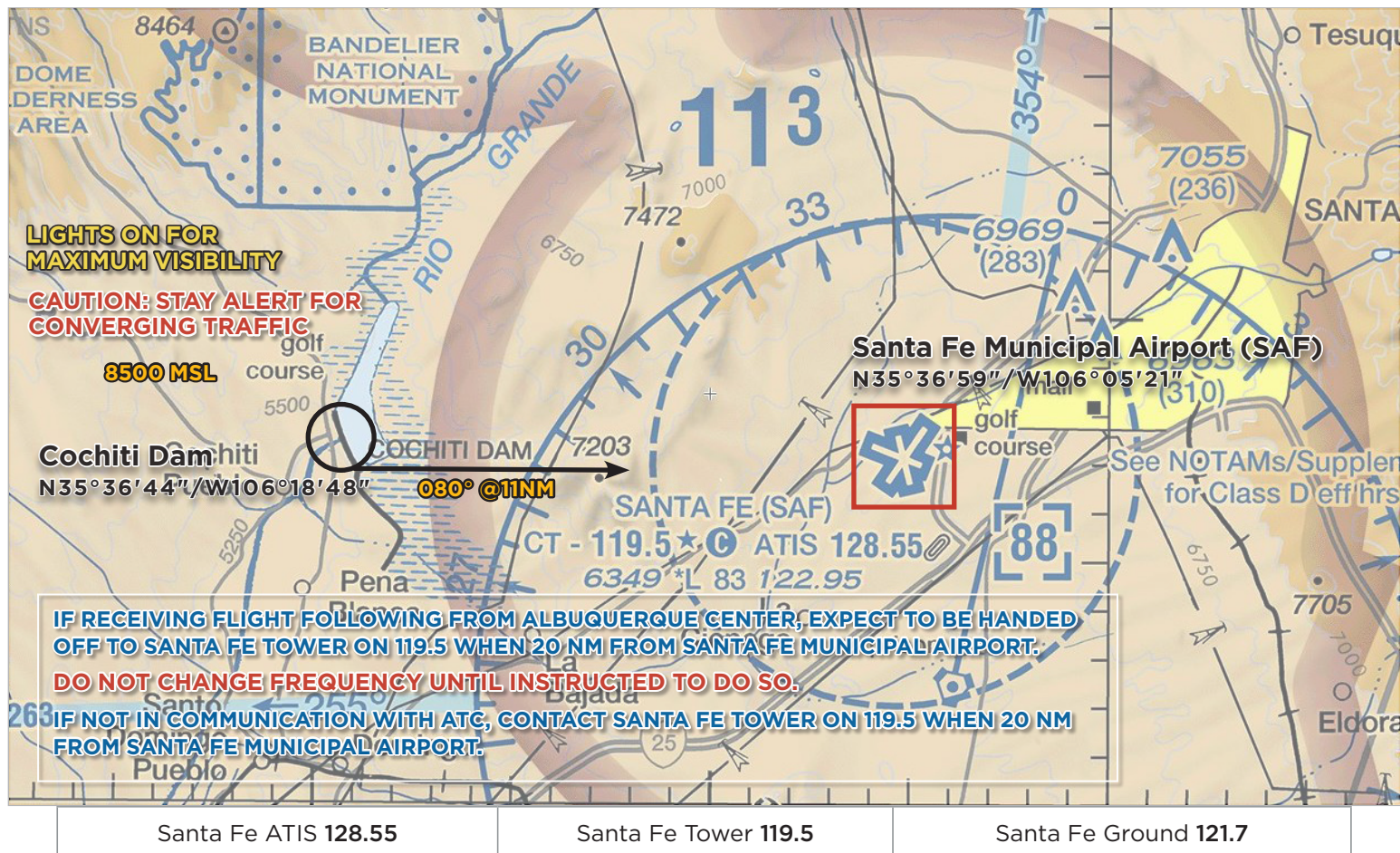
VFR PROCEDURES - Intersection of US 84 and SR 502



VFR PROCEDURES - Intersection of SR 502 and SR 30



VFR PROCEDURES - Arrivals over Cochiti Dam



FLIGHT FOLLOWING

Pilots are strongly encouraged to obtain flight following from the appropriate ATC facility at a minimum of 100 NM from Santa Fe Municipal Airport.



CHECK ATIS ON 128.55 AS SOON AS PRACTICAL.

This procedure begins over Cochiti Dam at **8500** feet MSL. If receiving flight following from Albuquerque Center, expect to be handed off to Santa Fe Tower on **119.5** when **20** NM from Santa Fe Municipal Airport. **Do not change frequency until instructed to do so.** If **not** already in communication with ATC, contact Santa Fe Tower on **119.5** when **20** NM from Santa Fe Municipal Airport.



CAUTION: Stay alert for converging aircraft.

From Cochiti Dam, fly an approximate heading of **080°** toward Santa Fe Municipal Airport, or if traffic volume requires holding, follow instructions from Santa Fe Tower on **119.5** and expect to fly the hold procedure as depicted in the **COCHITI LAKE VFR HOLD GRAPHIC**. (See graphic on page 6) All aircraft should fly left turns at **8500** feet MSL.



CAUTION: Stay alert for converging aircraft.

When Santa Fe Tower announces that holding is no longer required, aircraft should proceed inbound from Cochiti Dam toward Santa Fe Municipal Airport. Begin descent as directed by ATC or at pilot's discretion. *Aircraft in the hold should complete the hold before proceeding inbound toward SAF. Exit the hold at the southern tip of Cochiti Lake.*

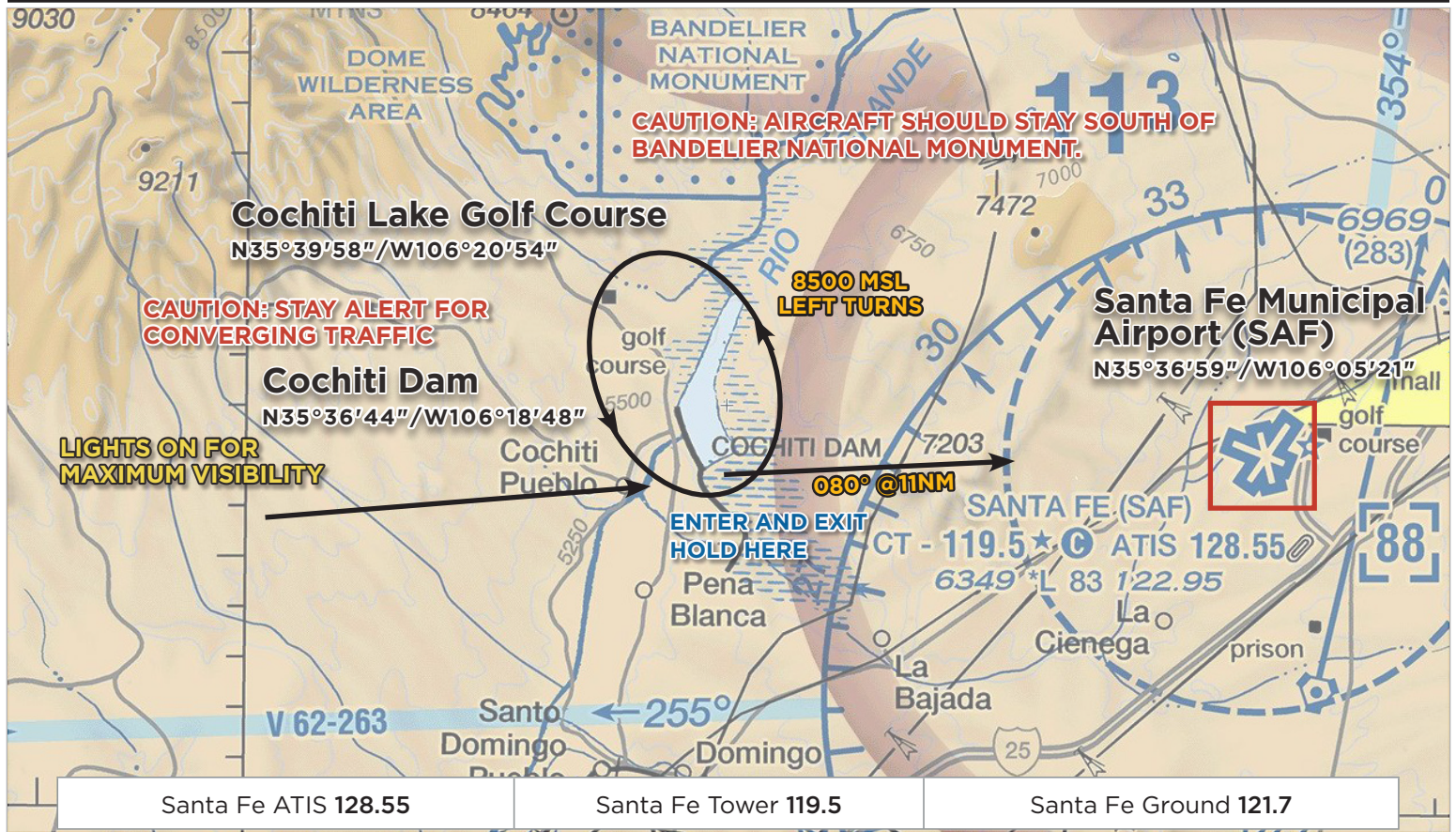
Follow landing instructions from Santa Fe Tower on **119.5**.

SAF TPA: 7350 feet MSL light aircraft; 7850 feet MSL multi-engine/turbine aircraft

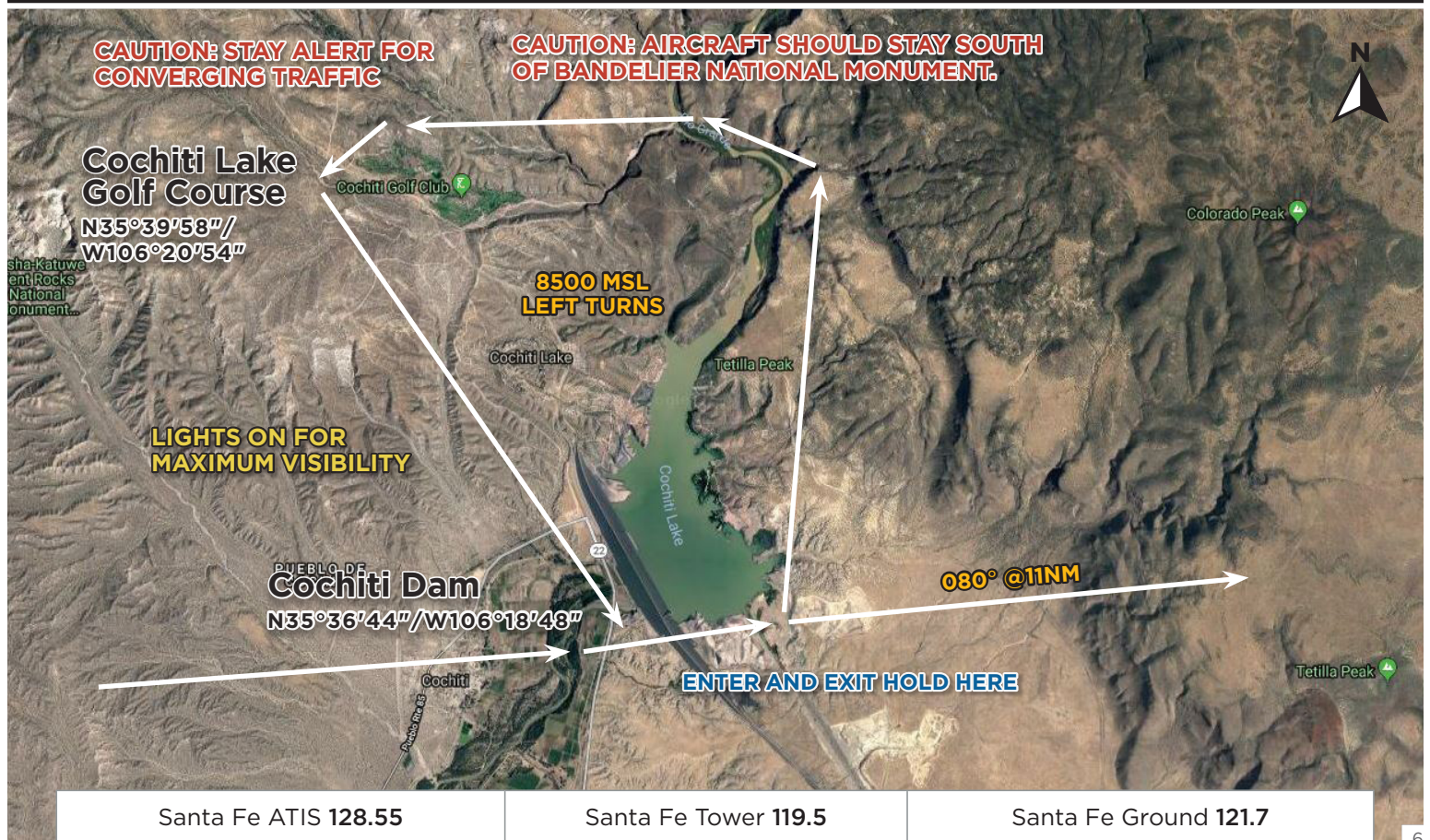
After landing, do not stop on the runway unless necessary. Exit the runway as quickly and as safely as possible at the first available taxiway east of runway **2/20** or as instructed by Santa Fe Tower. Continue far enough forward so as not to block subsequent arrivals. **UNLESS OTHERWISE INSTRUCTED BY SANTA FE TOWER**, continue to taxiway **D** or **A** and **MONITOR** Santa Fe Ground on **121.7**. Marshalls will guide you to a parking space once you have arrived in the non-movement/aircraft parking area.

Runway 2/20 is long enough to accommodate two single engine aircraft simultaneously. Aircraft might be instructed to land while another aircraft is still exiting the runway. Follow instructions from Santa Fe Tower.

VFR PROCEDURES - Cochiti Lake Hold



VFR PROCEDURES - Cochiti Lake Hold





This procedure begins over the intersection of US 285 and Interstate 25 near Eldorado at **8500** feet MSL. If receiving flight following from Albuquerque Center, expect to be handed off to Santa Fe Tower on **119.5** when **20** NM from Santa Fe Municipal Airport. **Do not change frequency until instructed to do so.** If **not** already in communication with ATC, contact Santa Fe Tower on **119.5** when **20** NM from Santa Fe Municipal Airport.



From the intersection of US 285 and Interstate 25, fly an approximate heading of **282°** toward Santa Fe Municipal Airport, or if traffic volume requires holding, follow instructions from Santa Fe Tower on **119.5** and expect to fly the hold procedure as depicted in the **EL DORADO VFR HOLD GRAPHIC**. (See graphic on page 8) All aircraft should fly left turns at **8500** feet MSL.



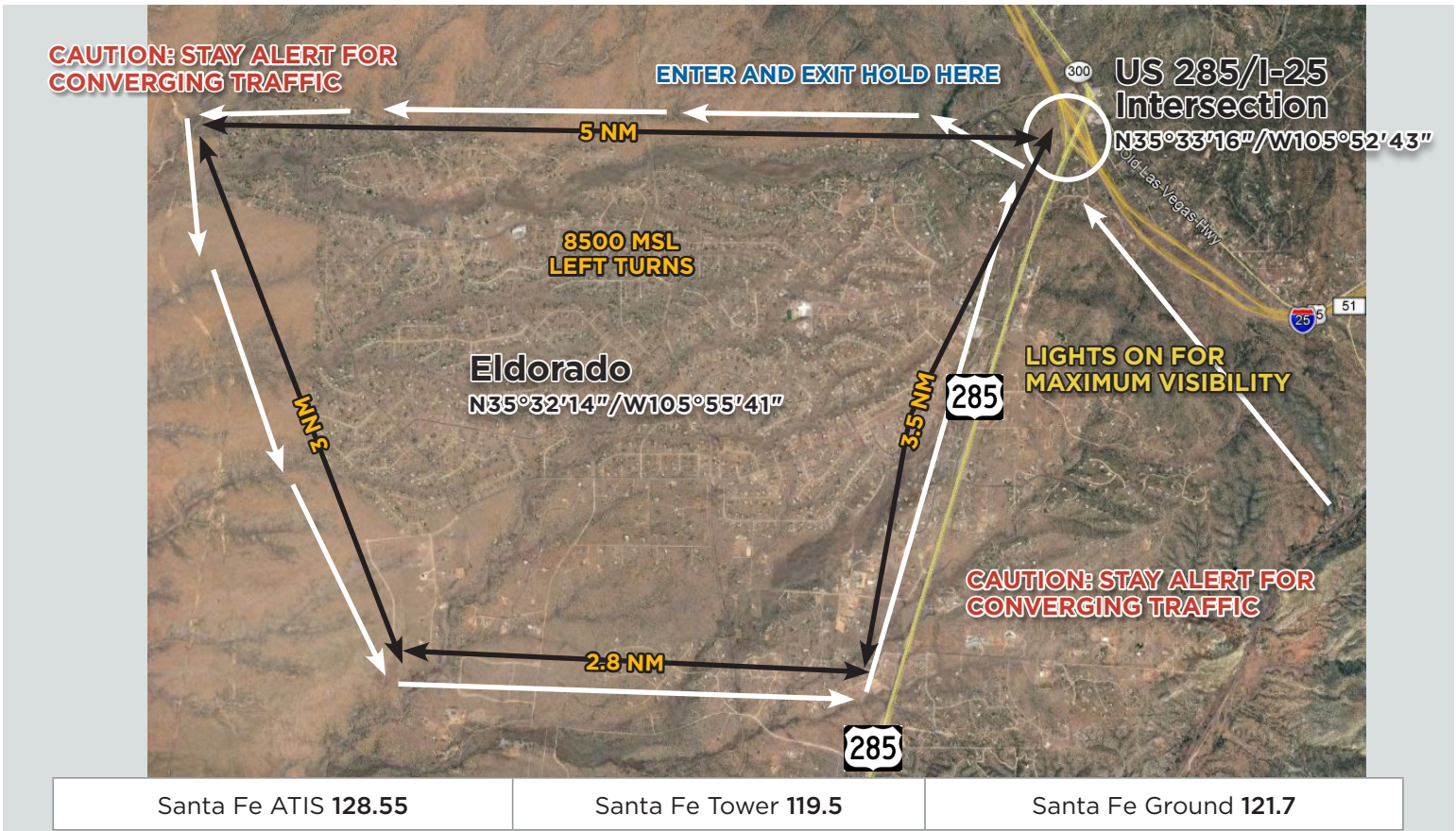
When Santa Fe Tower announces that holding is no longer required, aircraft should proceed inbound from the intersection of US 285 and Interstate 25 toward Santa Fe Municipal Airport. Begin descent as directed by ATC or at pilot's discretion. *Aircraft in the hold should complete the hold before proceeding inbound toward SAF. Exit the hold over the US 285/I-25 intersection.*

SAF TPA: 7350 feet MSL light aircraft; 7850 feet MSL multi-engine/turbine aircraft

After landing, do not stop on the runway unless necessary. Exit the runway as quickly and as safely as possible at the first available taxiway **east** of runway **2/20** or as instructed by Santa Fe Tower. Continue far enough forward so as not to block subsequent arrivals. **UNLESS OTHERWISE INSTRUCTED BY SANTA FE TOWER**, continue to taxiway **D** or **A** and **MONITOR** Santa Fe Ground on **121.7**. Marshallsers will guide you to a parking space once you have arrived in the non-movement/aircraft parking area.

Runway 2/20 is long enough to accommodate two single engine aircraft simultaneously. Aircraft might be instructed to land while another aircraft is still exiting the runway. Follow instructions from Santa Fe Tower.

VFR PROCEDURES - Eldorado Hold



VFR PROCEDURES - Intersection of US 285 and I-25



IFR DELAYS

There is no Special Traffic Management Program for this event. No arrival or departure reservations are required. IFR separation requirements may cause delays when arrival rates exceed airport capacity. Pilots on an IFR flight plan should be prepared for potential holding. IFR flight plans to Santa Fe Municipal Airport should be filed at least 2 hours prior to proposed departure time.

VFR flight on designated arrival routes is highly recommended if practical.

HELICOPTER OPERATIONS

Helicopters are not expected to fly the special VFR Arrival Procedures. When inbound, contact Santa Fe Tower on **119.5** as soon as practical for specific instructions. Rotary wing traffic pattern altitude is **7000** feet MSL.

LOCAL TRAINING AND PRACTICE APPROACHES

Local traffic pattern, closed traffic training, and practice instrument approaches **will not** be available at Santa Fe Municipal Airport during the AOPA Fly-In.

NO RADIO AIRCRAFT

Due to high density traffic, aircraft operations without a radio are not recommended.

STUDENT PILOTS

Due to high density traffic, solo student pilot operations are not recommended.

CAUTIONS

Possible lengthy delays associated with heavy arrival and departure times. Heavy arrivals expected **8:00 AM—11:00 AM** Friday and Saturday. Heavy departures expected **3:00 PM—6:00 PM** on Saturday.

Restricted Area **R-5101**; 13 NM northwest of Santa Fe Municipal Airport. **12,000** MSL and below.

Radar coverage north limited below **8500** MSL.

Radio communications limited east of the Fort Union VORTAC below **9500** MSL.

ATIS reception spotty coming from the direction of the Fort Union VORTAC until within **20** NM of Santa Fe Municipal Airport.

Avoid flight over Pecos Wilderness Area northeast of Santa Fe Municipal Airport.

High peaks and mountainous terrain in and around Santa Fe Municipal Airport.

Various Special Use Airspace within 100 NM of Santa Fe Municipal Airport.

Numerous dry (**no water**) reservoirs. Don't confuse them with Cochiti Lake (**contains water**).

Check density altitude especially on hot days.

FREQUENCIES AND WAYPOINT INFORMATION

EN ROUTE FREQUENCIES

Albuquerque Center	132.8
Denver Center	128.375

SANTA FE MUNICIPAL AIRPORT FREQUENCIES

Santa Fe ATIS	128.55
ASOS telephone number	505-474-3117
Santa Fe Tower (7:00 AM MDT - 9:00 PM MDT)	119.5
Santa Fe Ground	121.7
Santa Fe CTAF	119.5
UNICOM	122.95
Albuquerque Center	132.8
Albuquerque Radio RCO	122.2

FREQUENCIES AND WAYPOINT INFORMATION - continued

SPECIFIC LATITUDE/LONGITUDE COORDINATES

ARRIVALS OVER OHKAY OWINGEH AIRPORT (E14)		ARRIVALS OVER COCHITI DAM	
Ohkay Owinghe Airport (E14)	N36°01'33''/W106°02'44''	Cochiti Dam	N35°36'44''/W106°18'48''
Intersection of US 84 and SR 502	N35°53'26''/W106°01'22''	Cochiti Lake Golf Course	N35°39'58''/W106°20'54''
Intersection of SR 502 and SR 30	N35°53'04''/W106°09'14''	Santa Fe Municipal Airport (SAF)	N35°36'59''/W106°05'21''
Santa Fe Municipal Airport (SAF)	N35°36'59''/W106°05'21''		

ARRIVALS OVER US 285/I-25 INTERSECTION NEAR ELDORADO	
US 285/I-25 Intersection	N35°33'16''/W105°52'43''
Eldorado	N35°32'14''/W105°55'41''
Santa Fe Municipal Airport (SAF)	N35°36'59''/W106°05'21''

DEGREES, MINUTES, SECONDS CONVERTED TO DECIMAL DEGREES

ARRIVALS OVER OHKAY OWINGEH AIRPORT (E14)		ARRIVALS OVER COCHITI DAM	
Ohkay Owinghe Airport (E14)	36.025833°/ 106.045556°	Cochiti Dam	35.612222°/ 106.313333°
Intersection of US 84 and SR 502	35.890556°/ 106.022778°	Cochiti Lake Golf Course	35.666111°/ 106.348333°
Intersection of SR 502 and SR 30	35.88444444°/ 106.15388889°	Santa Fe Municipal Airport (SAF)	35.616389°/106.089167°
Santa Fe Municipal Airport (SAF)	35.616389°/ 106.089167°		

ARRIVALS OVER US 285/I-25 INTERSECTION NEAR ELDORADO	
US 285/I-25 Intersection	35.554444°/ 105.878056°
Eldorado	35.537222°/ 105.928056°
Santa Fe Municipal Airport (SAF)	35.616389°/ 106.089167°

SANTA FE MUNICIPAL AIRPORT GENERAL INFORMATION



PARKING AREAS

- When operating in the parking areas, pilots are encouraged to be extra alert for taxiing aircraft, aircraft with engine(s) running, and vehicle/pedestrian traffic.
- Marshalls will be assisting aircraft to and from parking areas and run-up areas.
- For safety reasons, high RPM engine running is prohibited in designated parking areas. For departure, it is recommended that pilots conduct their run-up procedures in queue if practical.
- Please review the parking map prior to landing and departing.

VEHICULAR TRAFFIC

- Vehicles are not allowed on ramps except those belonging to airport operators and tenants.

PREFLIGHT PLANNING

- Please ensure that you have reviewed the special flight information, departure procedures, and temporary taxi procedures prior to engine start.
- High density traffic is expected Friday and Saturday morning. Consider arriving during off-peak hours.

SANTA FE MUNICIPAL AIRPORT DEPARTURE PROCEDURES

IFR DEPARTURES

Locate a marshaller to monitor engine start. Place printed large IFR letters in the windshield. Follow marshaller's instructions to taxi to the nearest designated IFR departure holding area. IFR departures should obtain a clearance from Santa Fe Ground on **121.7**.

*Expect significant delays (5-10 minutes between departures) if departing IFR. Recommend departing VFR, **if practical**, and picking up IFR clearance enroute when beyond **40 NM** from Santa Fe Municipal Airport.*

If departing south or southwest, remain clear of Albuquerque International Sunport Airport (ABQ) Class C Airspace.

VFR DEPARTURES

VFR Flight Following: Pilots wanting VFR flight-following should make the request to the appropriate ATC facility when **20 NM** or more from Santa Fe Municipal Airport.

VFR Traffic Advisories/Flight Following will be provided on a workload-permitting basis only.

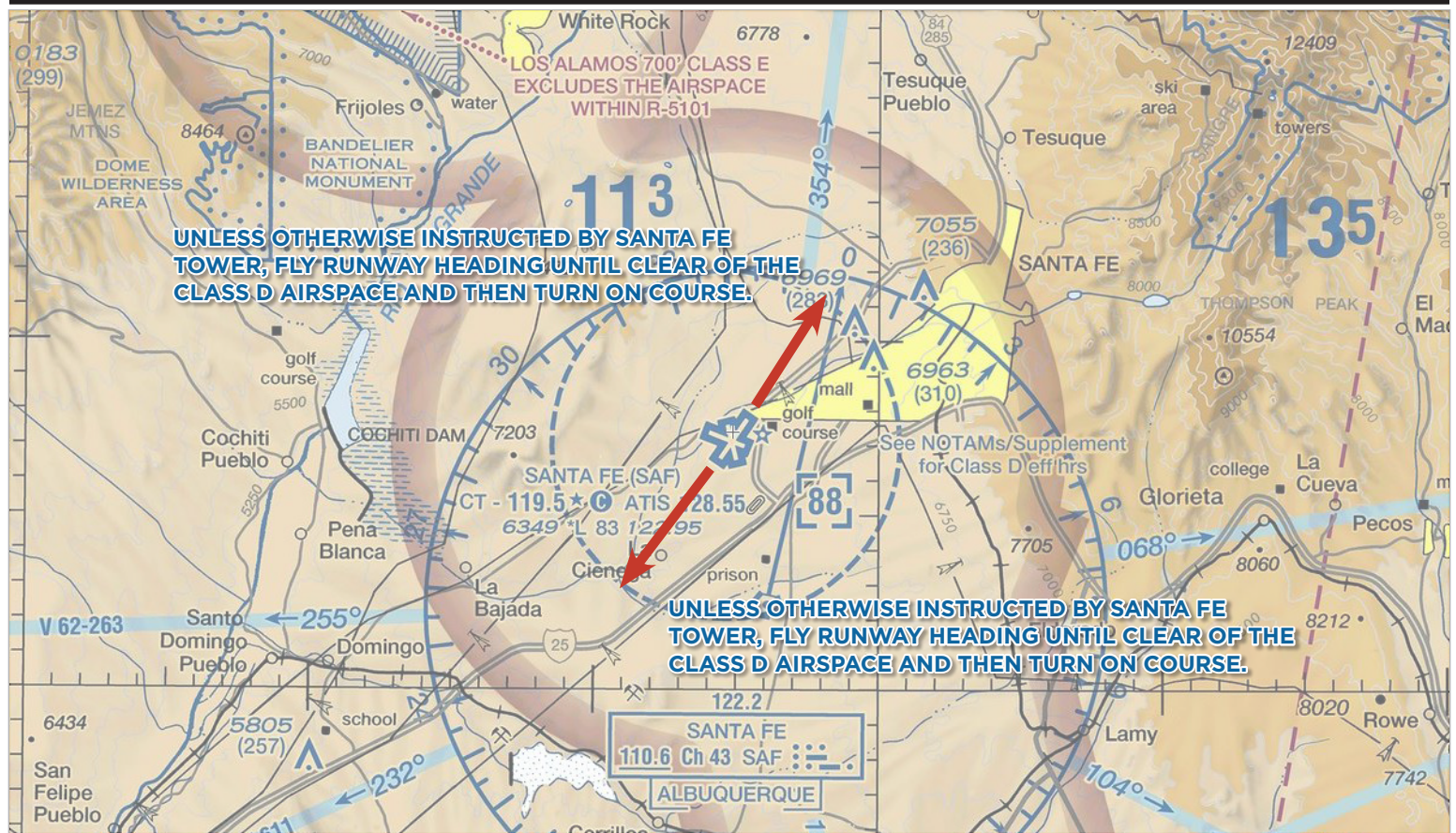
Prior to start-up -- Please ensure that you have reviewed the special flight information, departure procedures, and temporary taxi procedures prior to engine start. Check ATIS on **128.55**.

- **Engine start** – Locate a marshaller to monitor engine start.
- **Run-up** – If practical, it is recommended that you conduct your run-up while in queue for departure. Please consider propeller blast during your run-up.
- **Taxi** – Follow instructions from marshaller's and **MONITOR (*Do not contact*)** Santa Fe Ground on **121.7** during taxi.
- **Departure** — Contact Santa Fe Tower on **119.5** when number one for departure and state intended direction of flight. Be prepared for immediate departure. **UNLESS OTHERWISE INSTRUCTED BY SANTE FE TOWER**, fly runway heading until clear of the Class D Airspace and then turn on course.

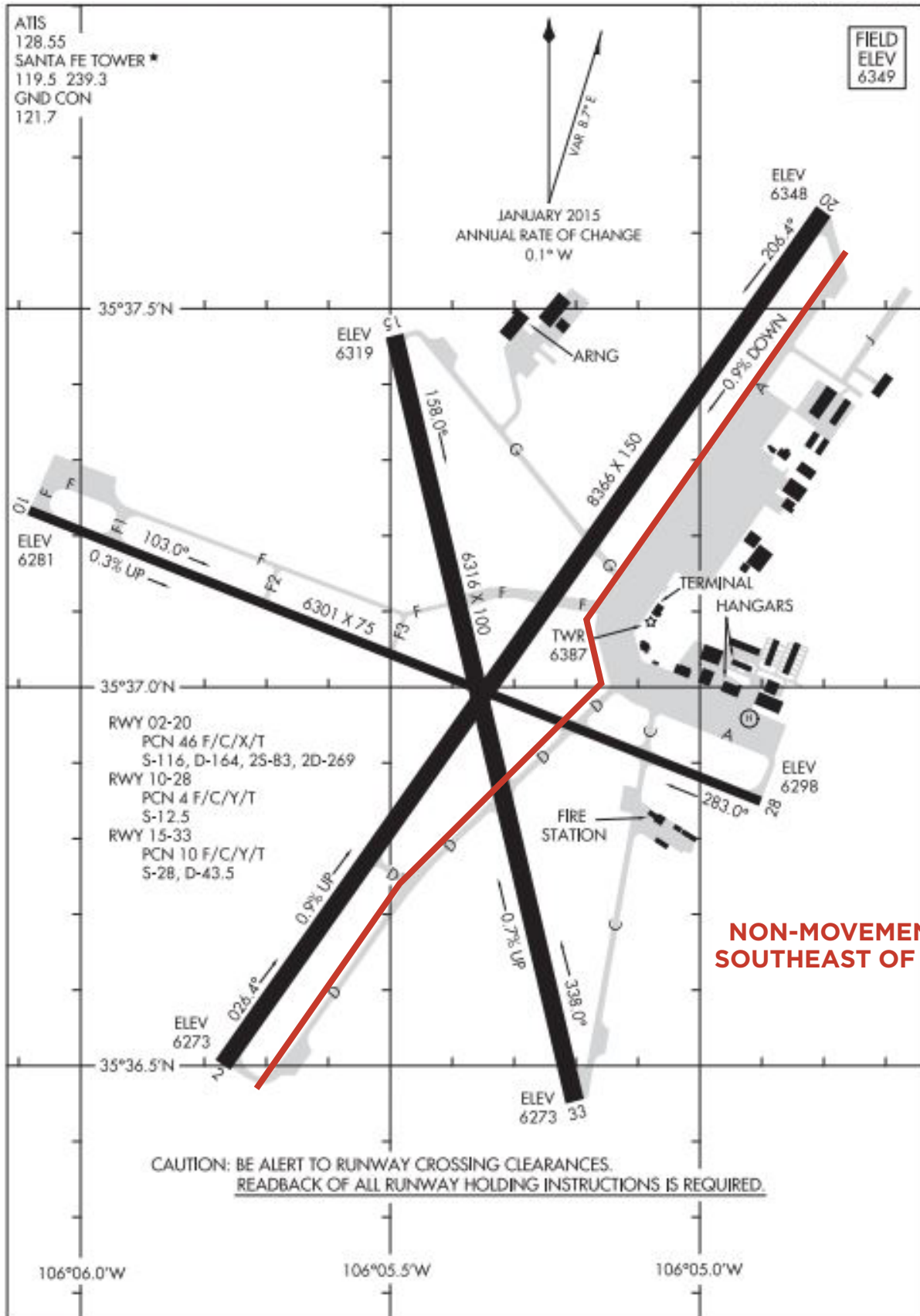


SEE AND BE SEEN!
REMEMBER, LIGHTS ON
FOR SAFETY!

DEPARTING SANTA FE MUNICIPAL AIRPORT



AIRPORT DIAGRAM



NON-MOVEMENT AREA
SOUTHEAST OF RED LINE

AIRPORT DIAGRAM

17061

SANTA FE, NEW MEXICO
SANTA FE MUNI (SAF)