

# RIM, HIP, -13B, & AMA



Presented to: Consultants Forum

By: Steven Debban, P.E.

Date: August 27, 2024



**Federal Aviation  
Administration**

# RIM – Current Status as of 8/23/2024

- 526 Towered Airports
- 18000+ Runway Incursions (RI) analyzed
- 126 Active RIM Locations
  - 82 Airports
- 106 locations associated w/ a new project
- 104 Mitigations complete



# RIM – Current Status as of 8/23/2024, cont'd

## Success Metrics

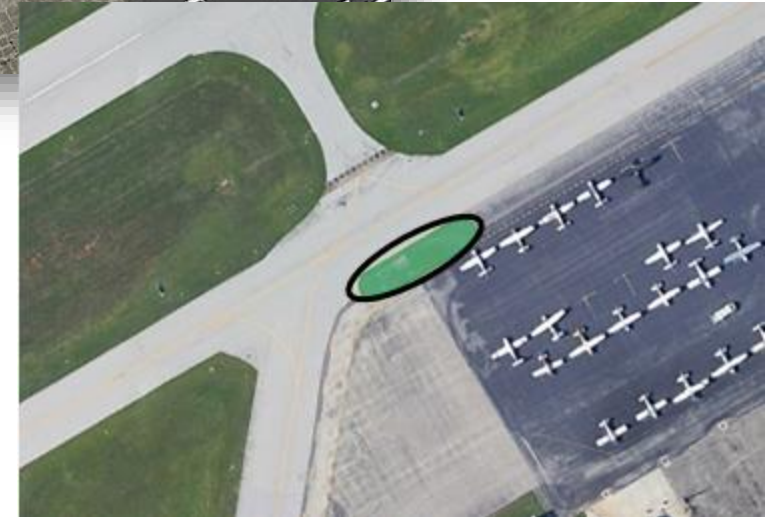
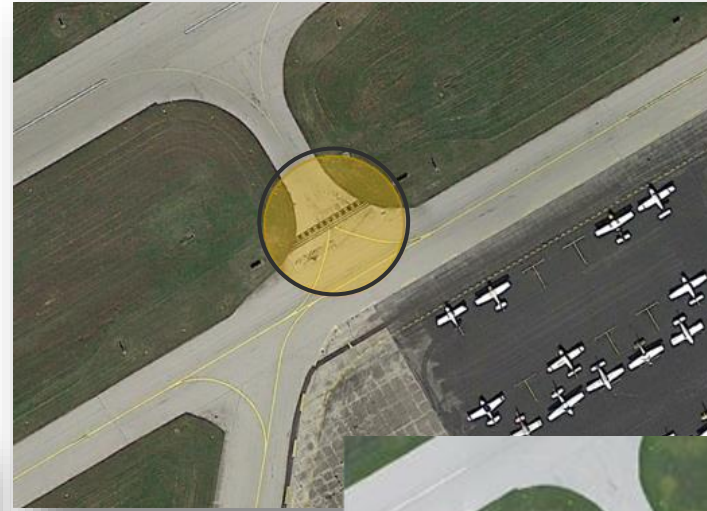
- CY 22 data show a 69% overall drop in RI at mitigated locations
  - Non-Standard Locations to a Standard = 75% improvement
  - Taxiway/Runway Reconfigurations = 77% improvement

## RIM 2.0

- Nearly 10 years of experience
  - Reevaluation of internal processes, success metrics
  - No effect on RIM location selection criteria



# RIM – Successes

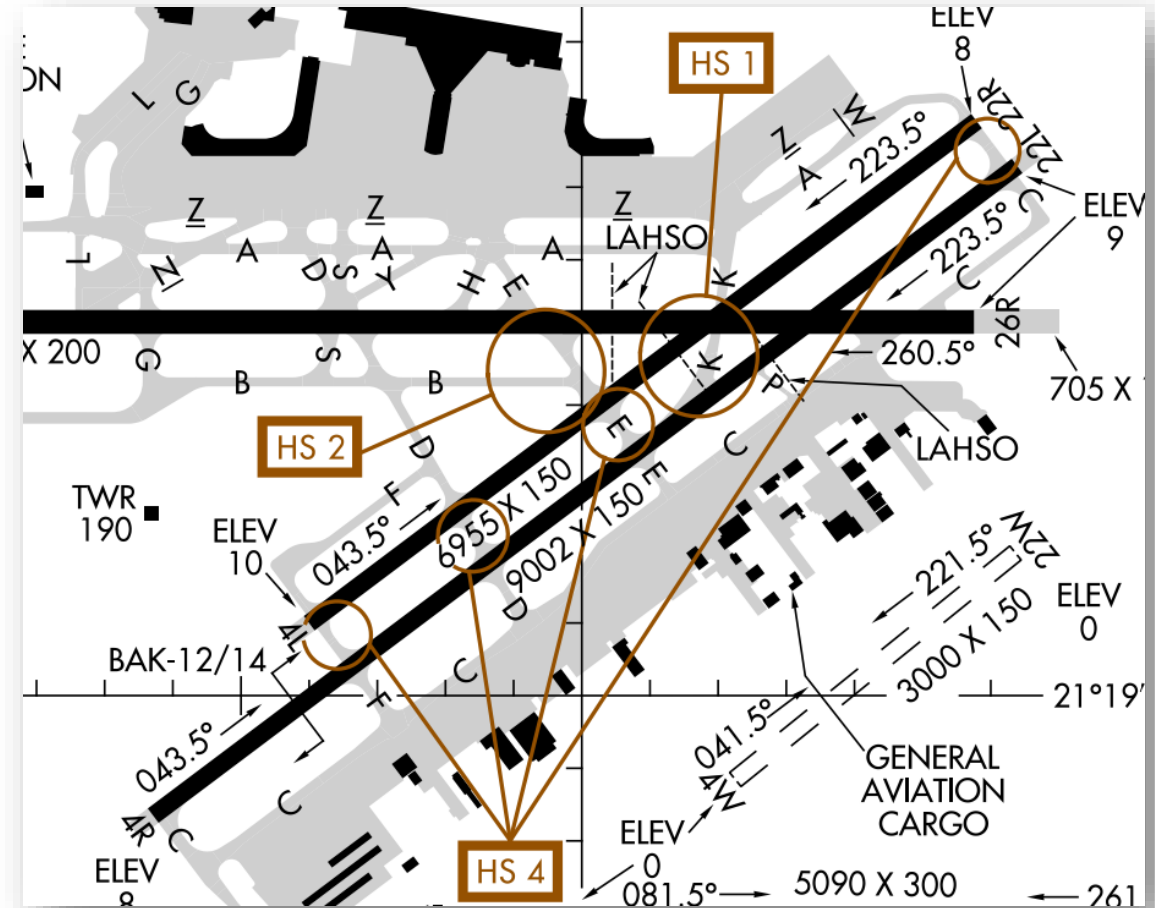




# HIP – Current Efforts

## Hot Spot Improvement Program

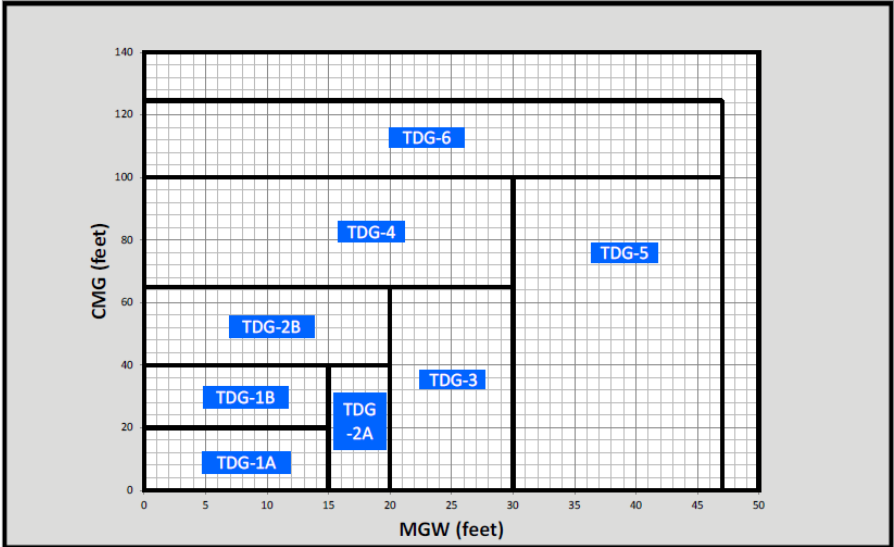
- Prioritization and Tracking Effort
  - Focus on non-RIM Hot Spots, RI risks
  - Encourage mitigation projects
- Analyze non-towered Part 139 airports
  - RIM principles
  - Develop priority locations



# AC 150/5300-13B, Change 1

- User Feedback Changes/Refinements
- Refined TDG Chart; added Table
- FPAG leads safety assessment for ops in the RSA
- ADG VI Runway Dimension Standards
  - Runway Width: 150'
  - Runway Shoulders Width: 35' or 50'
  - Blast Pad Width: 220' or 250'

Figure 1-1. Taxiway Design Groups (TDGs)



Note: Values for CMG and MGW in the graph are rounded to the nearest foot. 1 foot = 0.305 meters.

Table 1-4. TDG Table

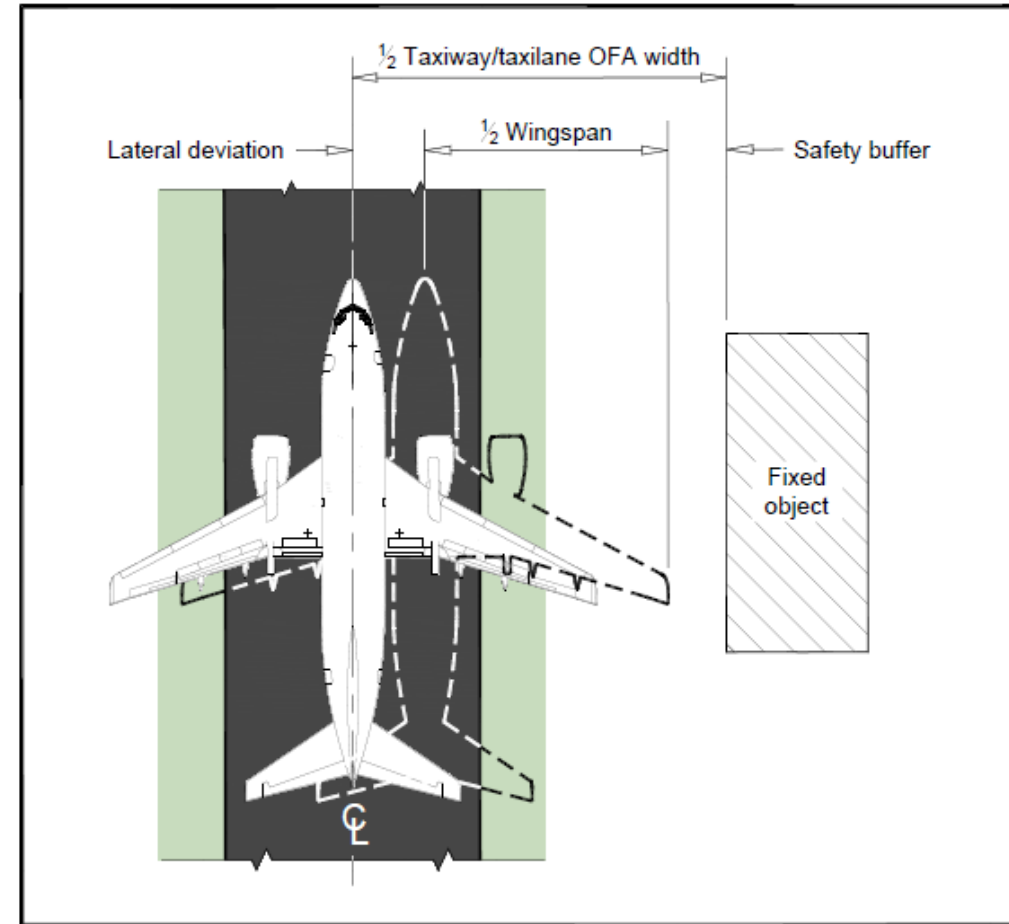
	TDG (feet)							
	1A	1B	2A	2B	3	4	5	6
CMG	0 to ≤ 20	> 20 to ≤ 40	0 to ≤ 40	> 40 to ≤ 65	0 to ≤ 65	> 65 to ≤ 100	0 to ≤ 100	> 100 to ≤ 125
MGW	0 to ≤ 15	0 to ≤ 15	> 15 to ≤ 20	0 to ≤ 20	> 20 to ≤ 30	0 to ≤ 30	> 30 to ≤ 47	0 to ≤ 47

Note: Values in the table are rounded to the nearest foot. 1 foot = 0.305 meters.



# AC 150/5300-13B, Change 1, cont'd

- Deleted Tables 4-3, 4-4, 4-6, 4-7 from -13B
- Updates to Table 6-1
  - Assoc equip. below RSA grade permitted
  - Added PAPI/VASI, PIDS and RGL guidance
- Add'l Taxiway Design Guidance – App. J
  - Clarified TOFA Calculations, various figures



# Questions/Ask Me Anything



Steven Debban, P.E.

National Resource Expert for Airport Design  
Office of Airports, AAS-110

