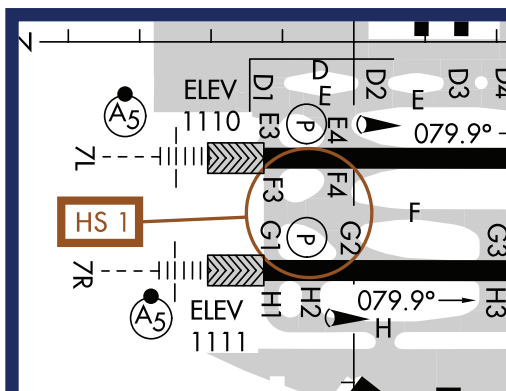
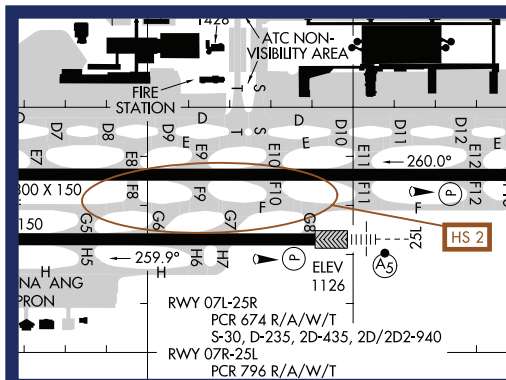


# Phoenix Sky Harbor Intl Airport (PHX)

D-ATIS Frequency:	127.575
Clearance Delivery Frequency:	118.1/269.2
Ground Frequency:	North 119.75/269.2 South 132.55/269.2
Tower Frequency:	Rwys 07L/25R 07R/25L 120.9/254.3 Rwy 08/26 118.7/278.8
Current ATIS Code:	_____
Squawking:	_____
Taxi Route:	_____
Request:	_____



**HS 1**  
Rwy 07L and Rwy 07R departures sometimes misidentify Twy F for Rwy 07L or Rwy 07R



**HS 2**  
Pilots sometimes cross Rwy 07L/25R at Twy F8, Twy F9, or Twy F10 without authorization

# Tips from PHX ATC Tower

March 2026



- **Use Caution on Taxiway F at F10:** If instructed by tower to cross runway 25L at intersection H7 and taxi via taxiway F, DO NOT confuse Intersection F10 for taxiway F. Inadvertently taxiing on F10 will lead you onto runway 25R.
- **Stay on Centerline Exiting FBO's:** When exiting the FBO ramps onto taxiway H, there is a vehicle service road between the ramp and the taxiway. Do not confuse the service road for taxiway H.
- **Ask For Progressive Taxi:** If the flight crew has any issues with taxi instructions or becomes unaware of their position, ask for progressive taxi instructions. Air Traffic Control is here to help you get to your destination safely!
- **Departure Runway Assignments:** When taxiing out of the FBO's, ground control may assign runway 7R or runway 25L at intersection H7. Based on arrival traffic, the tower controller may reassign the departure runway to runway 7L or runway 25R. Runway 25L at intersection H7 available distance is 6650'. Runway 7R available distance is 7800'.
- **Readback All Runway Assignments:** Departure runway assignment readbacks to the controller are required. Any runway hold short instructions also require a readback of the runway to hold short of. All ATC instruction readbacks require a call sign.
- **Taxi With Transponder On:** All aircraft taxi outbound or to the ramp with transponders in altitude mode, and your assigned squawk code. This keeps your information current on ATC ground radar and allows the radar Safety Logic system to function when necessary.

By following these tips, you can help avoid taxiway hotspots and reduce the risk of a runway incursion. Always prioritize safety when operating at an airport and remember to communicate with ATC and other pilots to ensure a safe and efficient operation.

