

**1997**

**AEROMEDICAL CERTIFICATION**

**STATISTICAL HANDBOOK**



**U.S. DEPARTMENT OF TRANSPORTATION**

FEDERAL AVIATION ADMINISTRATION

**CIVIL AEROMEDICAL INSTITUTE**

AEROMEDICAL CERTIFICATION DIVISION

## Table of Contents

| <u>Section</u>   | <u>Page</u> |
|--|-------------|
| <b>I. AVIATION MEDICAL EXAMINER INFORMATION</b>                              | <b>1</b>    |
| A. Designated FAA Aviation Medical Examiners by Region                       | 2           |
| B. Medical Practice of Aviation Medical Examiners (Chart)                    | 3           |
| C. Regional Coverage of Aviation Medical Examiners Versus Civil Airmen       | 4           |
| D. Aviation Medical Examiner Seminars - Date, Location and Attendance        | 5           |
| E. Aviation Medical Examiner Seminars and Attendance                         | 6           |
| F. Regional Aviation Medical Examiner Activity                               | 7           |
| G. Aviation Medical Examiner Summary Data                                    | 8           |
| <b>II. CERTIFICATION ACTIVITY</b>  | <b>9</b>    |
| A. Airman Applications for Medical Certification (Chart)                     | 10          |
| B. Receipts of Medical Certificate Applications by Class                     | 11          |
| C. Medical Applications Processing by the Aeromedical Certification Division | 12          |
| D. Aeromedical Certification Division Correspondence Activity                | 13          |
| E. Aeromedical Certification Division Computer Tape File Summary             | 14          |
| F. Medical Certification Activity Summary                                    | 15          |
| <b>III. REFERRALS AND DENIALS</b>  | <b>17</b>   |
| A. Distribution of Causes for Review by Major Category                       | 18          |
| B. Distribution of Causes for Review by Major and Minor Categories           | 19          |
| C. Special Issuances and Denials (Table)                                     | 20          |

## **Table of Contents (Continued)**

| <b><u>Section</u></b>  | <b><u>Page</u></b> |
|--|--------------------|
| <b>IV. GENERAL AIRMAN POPULATION DATA</b>  | <b>21</b>          |
| A. Regional Distribution of Active Airmen by Class of Certificate and Effective Status | 22                 |
| B. Active Airmen's State of Residence by Sex and Class of Certificate Issued           | 23                 |
| C. Age Distribution of Medically Certified Airmen (Chart)                              | 25                 |
| D. Age Distribution of Medically Certified First-Class Airmen (Chart)                  | 26                 |
| E. Age Distribution of Medically Certified Second-Class Airmen (Chart)                 | 27                 |
| F. Age Distribution of Medically Certified Third-Class Airmen (Chart)                  | 28                 |
| G. Age Distribution of Active Airmen by Class and Sex (Table)                          | 29                 |
| H. Age Distribution of Airline Pilots (Chart)  | 30                 |
| I. Age Distribution of Airline Pilots (Table)  | 31                 |
| J. Height Distribution of Active Airmen by Class and Sex                               | 32                 |
| K. Weight Distribution of Active Airmen by Class and Sex                               | 33                 |
| L. Active Airmen by Occupation, Class and Sex  | 34                 |
| M. Employers of Active Airmen by Class of Certificate Issued                           | 35                 |
| <b>V. MEDICAL CHARACTERISTICS OF THE AIRMAN POPULATION</b>                             | <b>37</b>          |
| A. Active Airmen by Number of Restrictions Carried, Class and Sex                      | 38                 |
| B. Frequency of Restrictions Among Active Airmen by Class and Sex                      | 39                 |
| C. Active Airmen with Defective Color Vision by Class and Sex                          | 43                 |
| D. Active Airmen with Waivers by Class and Sex   | 44                 |

## SYMBOLS

|   |     |
|---|-----|
| Category not applicable .....                 | N/A |
| Data not available .....                      | --- |
| Quantity zero .....                           | -   |
| Quantity more than 0 but less than 0.05 ..... | 0.0 |
| More than .....                               | >   |
| Less than .....                               | <   |

FOR ADDITIONAL INFORMATION ON DATA PRESENTED, please refer to the footnotes provided on the table or chart, or contact the office indicated in the source note.



|                  |
|------------------|
| <b>SECTION I</b> |
|------------------|

**AVIATION MEDICAL EXAMINER INFORMATION**

This section reflects the activities of the Aviation Medical Examiner Program during calendar year 1997 with some comparative data for previous years.

An Aviation Medical Examiner (AME) is a physician authorized by the Federal Aviation Administration (FAA) to perform airman physical examinations for issuance of FAA medical certificates. These physicians are designated according to the geographical distribution of airmen. There are also military facilities (installations) designated to perform FAA airman examinations of military personnel for issuance of second- and third-class certificates.

AME seminars are held in each region and at Oklahoma City's Civil Aeromedical Institute to acquaint these physicians with the regulations and procedures governing the issuance of FAA medical certificates.

Table I.A

## DESIGNATED FAA AVIATION MEDICAL EXAMINERS BY REGIONS

1996-1997

| REGION               | PERCENT OF<br>1997 TOTAL* | AVIATION MEDICAL<br>EXAMINERS |              |
|----------------------|---------------------------|-------------------------------|--------------|
|                      |                           | 1996                          | 1997         |
| Alaskan              | 1.6                       | 94                            | 92           |
| Central              | 5.7                       | 348                           | 336          |
| Eastern              | 11.8                      | 684                           | 693          |
| Great Lakes          | 14.5                      | 859                           | 853          |
| New England          | 3.2                       | 201                           | 187          |
| Northwest Mountain   | 9.5                       | 594                           | 560          |
| Southern             | 18.3                      | 1,072                         | 1,075        |
| Southwest            | 12.4                      | 743                           | 730          |
| Western Pacific      | 7.8                       | 477                           | 458          |
| <b>SUBTOTAL</b>      | <b>84.8</b>               | <b>5,072</b>                  | <b>4,984</b> |
| <b>Military</b>      | <b>8.2</b>                | <b>415</b>                    | <b>485</b>   |
| <b>International</b> | <b>7.0</b>                | <b>401</b>                    | <b>414</b>   |
| <b>TOTAL</b>         | <b>100.0</b>              | <b>5,888</b>                  | <b>5,883</b> |

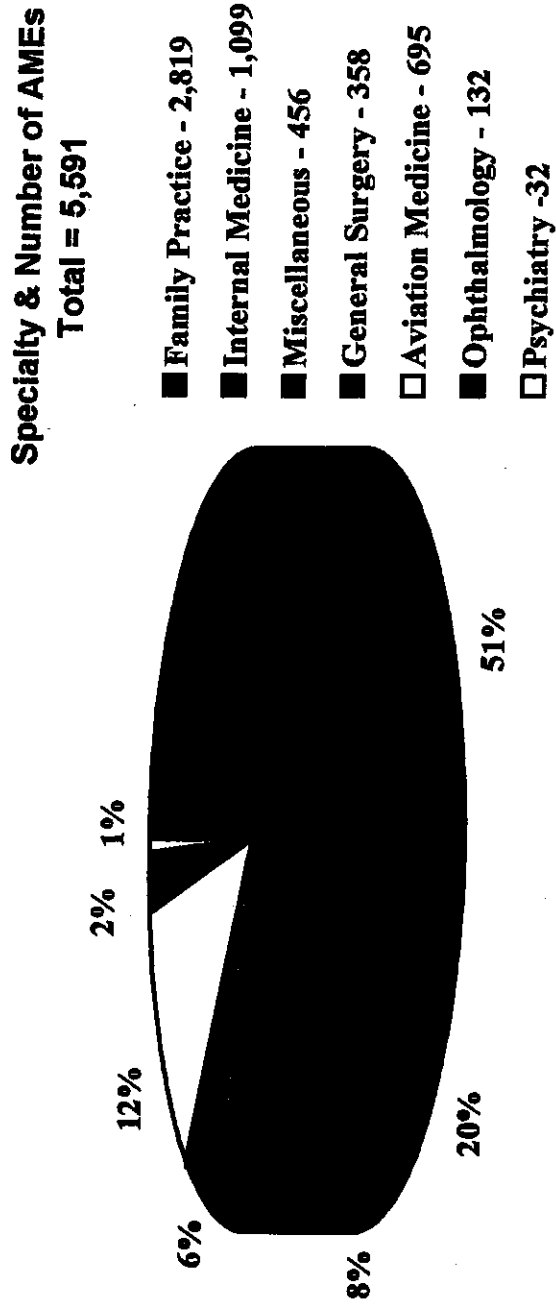
\* The basis for percentage computations is total designations as of the end of calendar year 1997.

Source: Civil Aeromedical Institute, Aeromedical Education Division, Aviation Medical Examiner Program; RIS: AC 8520-2, AME Worklist by State (designated FAA Aviation Medical Examiners by Region and State).

**FIGURE I.B**

**MEDICAL PRACTICE OF AVIATION MEDICAL EXAMINERS**

As of: December 31, 1997



\* Based on United States, International, and Military Aviation Medical Examiners.

Source: Civil Aeromedical Institute, Aeromedical Education Division, Aviation Medical Examiner Program; RIS: AC 8520-5, AME Specialty Summary by State.



Table I.C

**REGIONAL COVERAGE OF AVIATION MEDICAL EXAMINERS  
VERSUS CIVIL AIRMEN  
1997**

| <b>REGION</b>      | <b>Active U.S. Civil<br/>Airman Population *</b> | <b>U.S. Non-Military<br/>AME Population **</b> | <b>Ratio AMEs<br/>To Airmen</b> |
|--------------------|--|--|---------------------------------|
| Alaskan            | 8,400  | 92   | 1:91                            |
| Central            | 28,220   | 336  | 1:84                            |
| Eastern            | 68,408   | 693  | 1:99                            |
| Great Lakes        | 94,430   | 853  | 1:111                           |
| New England        | 24,889   | 187  | 1:133                           |
| Northwest Mountain | 58,418   | 560  | 1:104                           |
| Southern           | 107,414  | 1,075  | 1:100                           |
| Southwest          | 66,009   | 730  | 1:90                            |
| Western Pacific    | 91,317   | 458  | 1:199                           |
| <b>TOTAL</b>       | <b>547,505</b>                                   | <b>4,984</b>                                   | <b>1:110</b>                    |

\* Active U.S. Civil Airman Population figures are as of December 31, 1997; RIS: AC 8065-4, Examination Time Period Summary. Military and International not included.

\*\* U.S. Non-Military AME Population figures are as of January 1, 1998; RIS: AC 8520-2, AME Worklist by State (Designated FAA Aviation Medical Examiners by Region and State). Military and International not included.

Source: Civil Aeromedical Institute, Aeromedical Education Division, Aviation Medical Examiner Program; and Aeromedical Certification Division.

Table I.D

**AVIATION MEDICAL EXAMINER SEMINARS  
DATE, LOCATION AND ATTENDANCE  
1997**

| <b>DATE</b>     | <b>LOCATION</b>         | <b>ATTENDANCE</b> |
|-----------------|-------------------------|-------------------|
| January 10 – 12 | Phoenix, Arizona        | 200               |
| February 3 – 7  | Oklahoma City, Oklahoma | 67                |
| March 21 – 23   | Ft. Lauderdale, Florida | 281               |
| April 18 – 20   | Washington, D.C.        | 250               |
| May 12 – 15     | Chicago, Illinois       | 144               |
| June 2 – 6      | Oklahoma City, Oklahoma | 75                |
| June 20 – 22    | Portland, Oregon        | 174               |
| July 11 – 13    | Albuquerque, New Mexico | 107               |
| August 18 – 22  | Oklahoma City, Oklahoma | 75                |
| November 7 – 9  | Atlanta, Georgia        | 269               |
| December 8 – 12 | Oklahoma City, Oklahoma | 76                |
| <b>TOTAL</b>    |                         | <b>1,718</b>      |

Source: Civil Aeromedical Institute, Aeromedical Education Division, Aviation Medical Examiner Program.

**Table I.E**  
**AVIATION MEDICAL EXAMINER SEMINARS AND ATTENDANCE**  
**1960-1997**

| <b>DATE</b>  | <b>SEMINARS</b> | <b>ATTENDANCE</b> |
|--------------|-----------------|-------------------|
| 1960         | 1               | 49                |
| 1961         | 16              | 1,031             |
| 1962         | 24              | 1,431             |
| 1963         | 13              | 1,153             |
| 1964         | 9               | 1,406             |
| 1965         | 10              | 1,596             |
| 1966         | 7               | 1,187             |
| 1967         | 11              | 1,281             |
| 1968         | 5               | 545               |
| 1969         | 7               | 970               |
| 1970         | 5               | 750               |
| 1971         | 10              | 1,521             |
| 1972         | 5               | 873               |
| 1973         | 4               | 806               |
| 1974         | 8               | 1,498             |
| 1975         | 13              | 1,633             |
| 1976         | 15              | 1,871             |
| 1977         | 12              | 1,309             |
| 1978         | 14              | 1,439             |
| 1979         | 16              | 1,733             |
| 1980         | 15              | 2,012             |
| 1981         | 13              | 1,477             |
| 1982         | 15              | 1,652             |
| 1983         | 17              | 1,523             |
| 1984         | 17              | 1,551             |
| 1985         | 15              | 2,033             |
| 1986         | 11              | 1,701             |
| 1987         | 13              | 1,573             |
| 1988         | 17              | 1,525             |
| 1989         | 16              | 1,550             |
| 1990         | 15              | 1,599             |
| 1991         | 15              | 1,472             |
| 1992         | 17              | 1,507             |
| 1993         | 15              | 1,418             |
| 1994         | 16              | 1,531             |
| 1995         | 13              | 1,406             |
| 1996         | 12              | 1,543             |
| 1997         | 11              | 1,718             |
| <b>TOTAL</b> | <b>468</b>      | <b>52,873</b>     |

Source: Civil Aeromedical Institute, Aeromedical Education Division, Aviation Medical Examiner Program.

Table I.F

**REGIONAL AVIATION MEDICAL EXAMINER ACTIVITY  
1997**

| <b>REGION</b>      | <b>AMEs<br/>Appointed</b> | <b>AMEs<br/>Reinstated</b> | <b>AMEs<br/>Separated</b> | <b>Total<br/>AMEs</b> |
|--------------------|---------------------------|----------------------------|---------------------------|-----------------------|
| Alaskan            | 3                         | -                          | 5                         | 92                    |
| Central            | 15                        | 2                          | 29                        | 336                   |
| Eastern            | 31                        | 6                          | 28                        | 693                   |
| Great Lakes        | 54                        | 9                          | 69                        | 853                   |
| New England        | 4                         | -                          | 19                        | 187                   |
| Northwest Mountain | 22                        | 6                          | 62                        | 560                   |
| Southern           | 64                        | 20                         | 81                        | 1,075                 |
| Southwest          | 28                        | 10                         | 51                        | 730                   |
| Western Pacific    | 17                        | 4                          | 40                        | 458                   |
| International      | 26                        | 2                          | 15                        | 414                   |
| Military           | 114                       | 1                          | 45                        | 485                   |
| <b>TOTAL</b>       | <b>378</b>                | <b>60</b>                  | <b>444</b>                | <b>5,883</b>          |

Source: Civil Aeromedical Institute, Aeromedical Education Division, Aviation Medical Examiners Program.

**Table I.G**

**AVIATION MEDICAL EXAMINER SUMMARY DATA \*  
1997**

---

|    |   |       |
|----|---|-------|
| A. | Number of Designated U.S. Non-Military Aviation Medical Examiners                           | 4,984 |
| B. | Number of Designated International Aviation Medical Examiners                               | 414   |
| C. | Number of Designated Military Aviation Medical Examiners                                    | 485   |
| D. | Ratio of U.S. Non-Military Aviation Medical Examiners to U.S. Civil Airmen                  | 1:110 |
| E. | Percentage of Non-Military Aviation Medical Examiners Who Are Qualified Pilots              | 49.8  |
| F. | Number of Non-Military Aviation Medical Examiners Who Participate in Accident Investigation | 109   |
| G. | Total Number of Seminars Conducted in 1997  | 11    |
| H. | Total Attendance of Aviation Medical Examiners at Seminars                                  | 1,718 |

---

\* An Aviation Medical Examiner may have been classified in more than one of these categories.

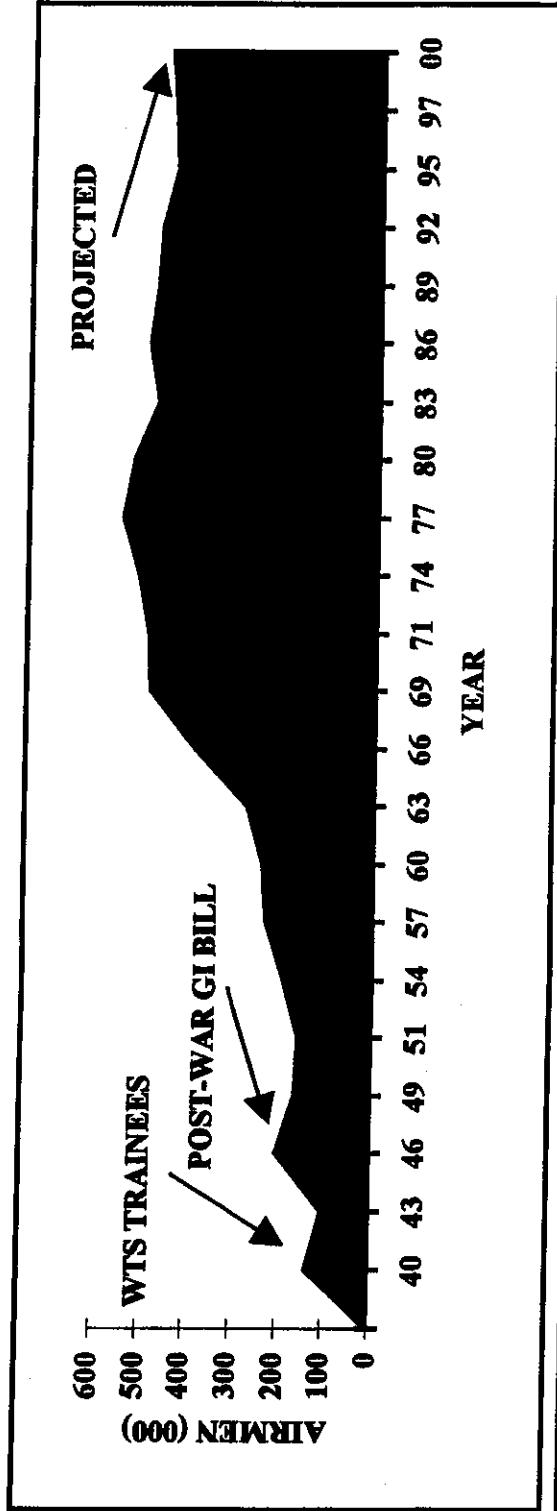
Source: Civil Aeromedical Institute, Aeromedical Education Division, Aviation Medical Examiner Program.

**SECTION II****CERTIFICATION ACTIVITY**

The Aeromedical Certification Division is the central screening facility and repository within the Federal Aviation Administration for collection, investigation, adjudication, and analysis of medical data.

Activities of the Aeromedical Certification Division are presented in this section. Data are presented by calendar year and reflect workload in the certification area.

# FIGURE II.A AIRMAN APPLICATIONS FOR MEDICAL CERTIFICATION 1940 - 1997 Projected to 2000



| Year         | 1940  | 1941  | 1942  | 1943   | 1944  | 1945  | 1946  | 1947  | 1948   | 1949   | 1950   | 1951  | 1952  | 1953  | 1954  | 1955  |
|--------------|-------|-------|-------|--------|-------|-------|-------|-------|--------|--------|--------|-------|-------|-------|-------|-------|
| Applications | 134.4 | 172.2 | 161.6 | 102.7  | 113.8 | 154.6 | 202.1 | 289.6 | 233.4  | 162.5  | 144    | 137.4 | 143.7 | 133.5 | 160.6 | 168.6 |
| Percentage*  | 83.3% | 28.1% | -6.2% | -36.4% | 10.8% | 35.9% | 30.7% | 43.3% | -19.4% | -30.4% | -11.4% | 9.3%  | -7.4% | -8.4% | 20.3% | 5.0%  |
| Year         | 1956  | 1957  | 1958  | 1959   | 1960  | 1961  | 1962  | 1963  | 1964   | 1965   | 1966   | 1967  | 1968  | 1969  | 1970  | 1971  |
| Applications | 181.7 | 229.6 | 217.9 | 255.6  | 237.5 | 237.3 | 254.1 | 271.8 | 294.7  | 330.6  | 387.5  | 427.6 | 463.9 | 487.7 | 487.7 | 493.1 |
| Percentage*  | 7.8%  | 26.4% | -5.1% | 17.3%  | -7.1% | -0.1% | 7.1%  | 7.0%  | 8.4%   | 12.2%  | 17.2%  | 10.3% | 9.0%  | 4.7%  | 0.0%  | 1.1%  |
| Year         | 1972  | 1973  | 1974  | 1975   | 1976  | 1977  | 1978  | 1979  | 1980   | 1981   | 1982   | 1983  | 1984  | 1985  | 1986  | 1987  |
| Applications | 494.7 | 521.7 | 515.4 | 519.2  | 542.1 | 520.2 | 565.5 | 550.2 | 529.1  | 529.4  | 463.2  | 477.9 | 463.6 | 479.8 | 499.0 | 470.2 |
| Percentage*  | 0.3%  | 5.5%  | -1.2% | 0.7%   | 4.4%  | 1.5%  | 2.8%  | -2.7% | -3.8%  | 0.1%   | -12.5% | 3.2%  | -3.0% | 3.5%  | 4.0%  | -5.8% |
| Year         | 1988  | 1989  | 1990  | 1991   | 1992  | 1993  | 1994  | 1995  | 1996   | 1997   | 1998   | 1999  | 2000  | 2001  | 2002  | 2003  |
| Applications | 466.3 | 481.2 | 480.9 | 494.6  | 473.9 | 456.0 | 452.9 | 441.8 | 446.2  | 447.9  | 452.4  | 456.9 | 461.5 | 461.5 | 461.5 | 461.5 |
| Percentage*  | -0.8% | 3.2%  | -0.1% | 2.8%   | -4.2% | -3.8% | -0.7% | -2.5% | 1.0%   | 1.0%   | 1.0%   | 1.0%  | 1.0%  | 1.0%  | 1.0%  | 1.0%  |

\*Percentage of increase or decrease over previous year. Projected receipts based on 1% increase each calendar year.  
Source: Civil Aeromedical Institute, Aeromedical Certification Division.

RECEIPTS OF MEDICAL CERTIFICATE APPLICATIONS BY CLASS \*  
1965-1997

| Calendar Year | Total   | First Class | Percent of Total | Second Class | Percent of Total | Third Class | Percent of Total |
|---------------|---------|-------------|------------------|--------------|------------------|-------------|------------------|
| 1965          | 330,617 | 52,006      | 15.7             | 109,600      | 33.2             | 169,011     | 51.1             |
| 1966          | 387,537 | 73,903      | 19.1             | 124,593      | 32.1             | 189,041     | 48.8             |
| 1967          | 427,596 | 80,474      | 18.8             | 143,458      | 33.5             | 203,664     | 47.6             |
| 1968          | 465,929 | 87,408      | 18.8             | 173,139      | 37.2             | 205,382     | 44.1             |
| 1969          | 478,700 | 90,666      | 18.9             | 178,699      | 37.3             | 209,335     | 43.7             |
| 1970          | 487,700 | 94,419      | 19.4             | 189,276      | 38.8             | 204,005     | 41.8             |
| 1971          | 493,145 | 91,478      | 18.5             | 204,853      | 41.5             | 196,814     | 39.9             |
| 1972          | 494,700 | 86,573      | 17.5             | 205,597      | 41.6             | 202,530     | 40.9             |
| 1973          | 521,700 | 93,384      | 17.9             | 220,679      | 42.3             | 207,637     | 39.8             |
| 1974          | 515,400 | 91,741      | 17.8             | 214,922      | 41.7             | 208,737     | 40.5             |
| 1975          | 519,200 | 91,379      | 17.6             | 224,814      | 43.3             | 203,007     | 39.1             |
| 1976          | 542,159 | 93,793      | 17.3             | 230,418      | 42.5             | 217,948     | 40.2             |
| 1977          | 550,243 | 97,393      | 17.7             | 230,552      | 41.9             | 222,298     | 40.4             |
| 1978          | 565,534 | 105,755     | 18.7             | 228,476      | 40.4             | 231,303     | 40.9             |
| 1979          | 550,188 | 111,138     | 20.2             | 212,373      | 38.6             | 226,677     | 41.2             |
| 1980          | 529,051 | 118,507     | 22.4             | 197,865      | 37.4             | 212,679     | 40.2             |
| 1981          | 529,418 | 128,649     | 24.3             | 183,708      | 34.7             | 217,061     | 41.0             |
| 1982          | 463,241 | 110,714     | 23.9             | 155,186      | 33.5             | 197,341     | 42.6             |
| 1983          | 477,905 | 114,219     | 23.9             | 171,090      | 35.8             | 192,596     | 40.3             |
| 1984          | 463,617 | 109,877     | 23.7             | 159,948      | 34.5             | 193,792     | 41.8             |
| 1985          | 479,849 | 126,680     | 26.4             | 154,511      | 32.2             | 198,658     | 41.4             |
| 1986          | 474,392 | 133,304     | 28.1             | 146,113      | 30.8             | 194,975     | 41.1             |
| 1987          | 470,208 | 147,175     | 31.3             | 138,241      | 29.4             | 184,792     | 39.3             |
| 1988          | 466,326 | 147,359     | 31.6             | 130,571      | 28.0             | 188,396     | 40.4             |
| 1989          | 481,168 | 162,635     | 33.8             | 128,953      | 26.8             | 189,580     | 39.4             |
| 1990          | 480,922 | 169,765     | 35.3             | 124,559      | 25.9             | 186,598     | 38.8             |
| 1991          | 494,612 | 181,523     | 36.7             | 127,115      | 25.7             | 185,974     | 37.6             |
| 1992          | 473,884 | 177,233     | 37.4             | 121,788      | 25.7             | 174,863     | 36.9             |
| 1993          | 455,995 | 170,086     | 37.3             | 118,559      | 26.0             | 167,350     | 36.7             |
| 1994          | 452,920 | 170,298     | 37.6             | 115,042      | 25.4             | 167,580     | 37.0             |
| 1995          | 441,827 | 174,522     | 39.5             | 110,456      | 25.0             | 156,849     | 35.5             |
| 1996          | 443,660 | 183,232     | 41.3             | 104,704      | 23.6             | 155,724     | 35.1             |
| 1997          | 447,937 | 185,894     | 41.5             | 100,786      | 22.5             | 161,257     | 36.0             |

\* The 1965 class distributions were achieved by applying percentages based on card counts of applications performed during 1965 to the total receipts for the year. Class distributions for 1966 through 1997 were based on percentages compiled from the Record of Physical Examinations Computer Submission Summary, AC 8500-3.

Source: Civil Aeromedical Institute, Aeromedical Certification Division; RIS: AC 8500-3, Record of Physical Examinations Computer Submission Summary Report.



Table II.C

**MEDICAL APPLICATIONS PROCESSING BY THE  
AEROMEDICAL CERTIFICATION DIVISION  
1997**

| Month           | Applications Received | Applications Coded for Computer Screening | Applications Screened by Computer * | Applications Requiring Manual Review ** | Applications Intra-Office Transmitted *** |
|-----------------|-----------------------|---|-------------------------------------|---|---|
| January         | 31,816                | 22,392                                    | 21,192                              | 11,656                                  | 84  |
| February        | 32,049                | 23,188                                    | 22,888                              | 15,062                                  | 81  |
| March           | 37,988                | 26,217                                    | 27,217                              | 14,969                                  | 117                                       |
| April           | 39,910                | 29,454                                    | 29,154                              | 16,035                                  | 92  |
| May             | 38,489                | 26,847                                    | 26,047                              | 14,326                                  | 88  |
| June            | 39,584                | 27,978                                    | 28,378                              | 17,344                                  | 86  |
| <b>SUBTOTAL</b> | <b>219,836</b>        | <b>156,076</b>                            | <b>154,876</b>                      | <b>89,392</b>                           | <b>548</b>                                |
| July            | 43,525                | 30,814                                    | 31,414                              | 17,278                                  | 113                                       |
| August          | 36,957                | 24,535                                    | 24,035                              | 13,219                                  | 267                                       |
| September       | 41,540                | 29,828                                    | 30,528                              | 16,790                                  | 183                                       |
| October         | 40,328                | 25,612                                    | 24,812                              | 13,647                                  | 134                                       |
| November        | 31,682                | 21,541                                    | 22,441                              | 12,343                                  | 95  |
| December        | 34,069                | 23,421                                    | 23,521                              | 12,937                                  | 275                                       |
| <b>SUBTOTAL</b> | <b>228,101</b>        | <b>155,751</b>                            | <b>156,751</b>                      | <b>86,214</b>                           | <b>1,083</b>                              |
| <b>TOTAL</b>    | <b>447,937</b>        | <b>311,827</b>                            | <b>311,627</b>                      | <b>175,606</b>                          | <b>1,631</b>                              |

\* Figures reflect the number of submissions to the computer rather than the number of applications because an application may have to be submitted to the computer more than once before it is accepted.

\*\* Total applications rejected for any reason is presently 55% of applications screened by computer.

\*\*\* Figures include applications transmitted to the regions and to the Federal Air Surgeon for certification or review. Represents 0.3% of the applications received.

Source: Civil Aeromedical Institute, Aeromedical Certification Division; RIS: AC 8065-3, Aeromedical Certification Processing Summary.

Table II.D

**AEROMEDICAL CERTIFICATION DIVISION  
CORRESPONDENCE ACTIVITY  
1997**

| Activity   | Frequency | Subtotal       | Percent of<br>Total |
|--|-----------|----------------|---------------------|
| <b>Certification</b>                                 |           |                |                     |
| Issued and Corrected Certificates                    | 17,920    |                |                     |
| Eligibility Letters                                  | 34,772    |                |                     |
| Issued or Duplicate Waivers                          | 2,050     |                |                     |
|  |           | 54,742         | 47.1                |
| <b>Further Action Necessary</b>                      |           |                |                     |
| Information Requested                                | 43,350    |                |                     |
| Medical Flight Test Authorization                    | 2,565     |                |                     |
|  |           | 45,915         | 39.5                |
| <b>Telegram Replies to Airmen/Agency<br/>Offices</b> |           |                |                     |
|  | 2,025     | 2,025          | 1.8                 |
| <b>Denial Letters</b>                                |           |                |                     |
| Final Denials  | 244       |                |                     |
| General Denials                                      | 1,607     |                |                     |
| Failure to Provide Denials                           | 2,620     |                |                     |
| Other Denial Correspondence                          | 2,836     |                |                     |
|  |           | 7,307          | 6.3                 |
| <b>Miscellaneous Correspondence*</b>                 |           |                |                     |
| AME Error Letters                                    | 207       |                |                     |
| Other Miscellaneous*                                 | 5,936     |                |                     |
|  |           | 6,143          | 5.3                 |
| <b>TOTAL</b>   |           | <b>116,132</b> | <b>100.0</b>        |

\* Includes refund letters, charge letters, second request letters, requests for return of medical certificate, cover letters, replies to airmen and physicians inquiries, and other miscellaneous letters.

Source: Civil Aeromedical Institute, Aeromedical Certification Division; RIS: AC 8065-3, Aeromedical Certification Processing Summary.

Table II.E

**CONSOLIDATED  
AEROMEDICAL CERTIFICATION DIVISION COMPUTER TAPE FILE SUMMARY  
As of: December 31, 1997**

| Action                        | Time Lapse Since Date of Last Examination |                |                |                |                           | Total                      |
|-------------------------------|---|----------------|----------------|----------------|---------------------------|----------------------------|
|                               | < 7 Months                                | < 13 Months    | < 25 Months    | 25-36 Months   | Over 36 Months            |                            |
| <u>Certified</u>              |   |                |                |                |                           |                            |
| First Class                   | 84,732                                    | 43,521         | 20,541         | 11,389         | N/A                       | 160,183                    |
| Second Class                  | 43,797                                    | 52,320         | 51,379         | 25,547         | N/A                       | 173,043                    |
| Third Class                   | 71,042                                    | 75,471         | 146,128        | 73,616         | N/A                       | 366,257                    |
| <b>SUBTOTAL</b>               | <b>199,571</b>                            | <b>171,312</b> | <b>218,048</b> | <b>110,552</b> | <b>N/A</b>                | <b>699,483</b>             |
| <u>Non-Certified</u>          |   |                |                |                |                           |                            |
| Pending                       | 3,226                                     | 1,640          | 2,078          | 1,769          | N/A                       | 8,713                      |
| Denied                        | 738                                       | 1,974          | 3,495          | 2,775          | N/A                       | 8,982                      |
| <b>SUBTOTAL</b>               | <b>3,964</b>                              | <b>3,614</b>   | <b>5,573</b>   | <b>4,544</b>   | <b>N/A</b>                | <b>17,695</b>              |
| <u>Link*</u>                  | N/A                                       | N/A            | N/A            | N/A            | 625,075                   | 625,075                    |
| <b>TOTAL</b>                  | <b>203,535</b>                            | <b>174,926</b> | <b>223,621</b> | <b>115,096</b> | <b>625,075</b>            | <b>1,342,253</b>           |
| <b>EFFECTIVE STATUS TOTAL</b> |   |                |                |                | <b>Class II = 139,638</b> | <b>Class III = 364,561</b> |

\* Abbreviated records maintained on individuals having significant pathology who have not had a physical examination in the past 36 months. These airmen may or may not have been certified.

Source: Civil Aeromedical Institute, Aeromedical Certification Division.

**Table II.F**  
**MEDICAL CERTIFICATION ACTIVITY SUMMARY**  
**1995-1997**

| <b>Activity</b>  | <b>CY<br/>1997</b> | <b>CY<br/>1996</b> | <b>CY<br/>1995</b> |
|--|--------------------|--------------------|--------------------|
| Applications for Medical Certification                         | 447,937            | 443,660            | 441,827            |
| First-Class Combined Student/Medical<br>Certificates           | 6,078              | 5,306              | 2,647              |
| Second-Class Combined Student/Medical<br>Certificates          | 10,773             | 10,164             | 5,434              |
| Third-Class Combined Student/Medical<br>Certificates           | 68,946             | 69,085             | 38,037             |
| Electrocardiograms Received for First-Class<br>Pilots          | 77,639             | 75,302             | 73,015             |
| Incoming Correspondence*                                       | 88,470             | 74,619             | 76,991             |
| Outgoing Correspondence  | 117,101            | 112,315            | 124,611            |
| Applications Containing Medical or Clerical<br>Problems        | 175,606            | 207,309            | 195,850            |
| Number of First-Class Active Airmen with<br>Pathology Records  | 36,914             | 36,144             | 35,402             |
| Number of Second-Class Active Airmen with<br>Pathology Records | 48,983             | 50,560             | 52,286             |
| Number of Third-Class Active Airmen with<br>Pathology Records  | 84,489             | 83,299             | 83,526             |

\* Includes information requested by the Aeromedical Certification Division and inquiries from airmen or regional offices.

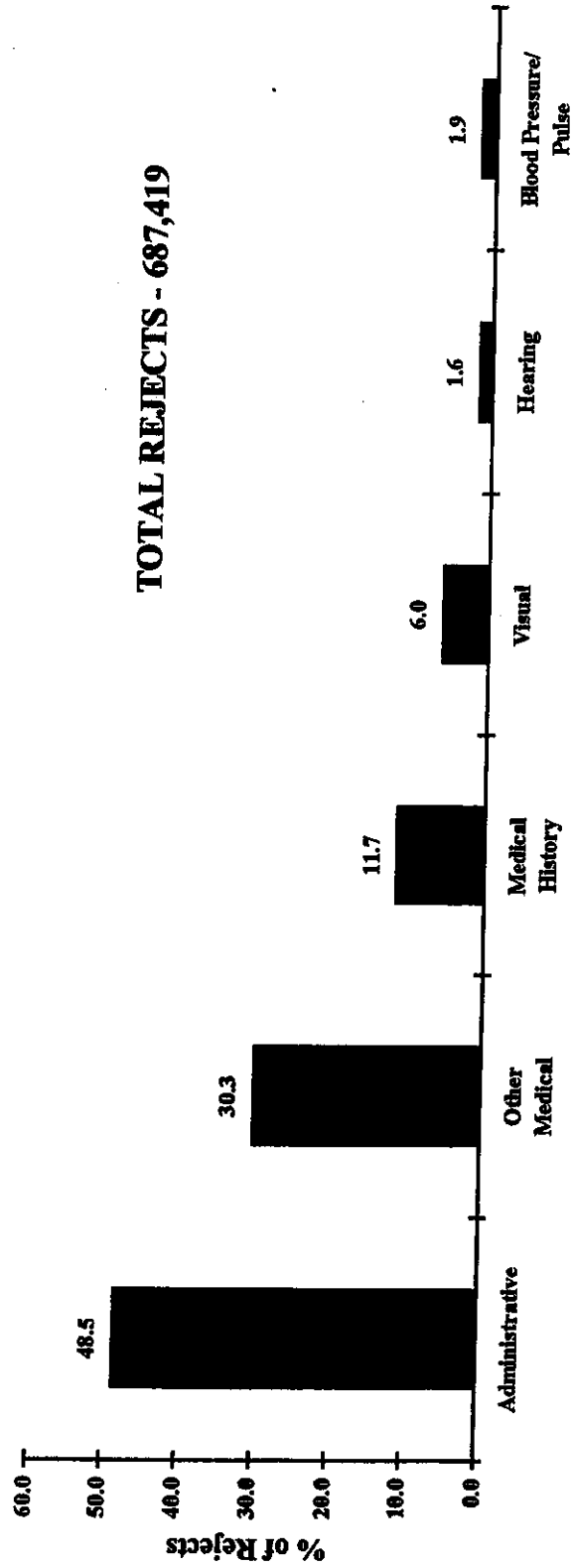
Source: Civil Aeromedical Institute, Aeromedical Certification Division; RIS: AC 8500-1, 8500-3, and 8065-3.



**SECTION III****REFERRALS AND DENIALS**

This section concerns those applications for medical certification which require manual review. These data are presented by calendar year and reflect the number of rejects, either medical or administrative, generated when the application enters the automated system. Also included are data reflecting the number of special issuances and denials.

**FIGURE III.A**  
**DISTRIBUTION OF CAUSES FOR REVIEW**  
**BY MAJOR CATEGORY**  
**1997**



**Source: Civil Aeromedical Institute, Aeromedical Certification Division; RIS: AC 8500-3, Aeromedical Certification Processing Summary.**

Table III.B

**DISTRIBUTION OF CAUSES FOR REVIEW BY MAJOR AND MINOR CATEGORIES  
1997**

| <b>Reject</b>   | <b>Major Category<br/>Totals</b> | <b>Percent</b> | <b>Minor<br/>Categories</b> | <b>Percent</b> |
|---|----------------------------------|----------------|-----------------------------|----------------|
| <b>Administrative</b>                                     | <b>333,928</b>                   | <b>48.5</b>    |                             |                |
| AME Number Rejects  |                                  |                | 6,697                       | 1.0            |
| No Ticket Flag Set  |                                  |                | 75,052                      | 10.9           |
| Previous Exam Has No Ticket Flag                          |                                  |                | 6,913                       | 1.1            |
| Clerical Reject   |                                  |                | 7,187                       | 1.0            |
| Waiver Rejects  |                                  |                | 1,722                       | 0.2            |
| Re-Submit Exam to Computer                                |                                  |                | 2,521                       | 0.3            |
| Date of ECG Rejects                                       |                                  |                | 8,958                       | 1.3            |
| No Match Between New and Previous Exams                   |                                  |                | 1,758                       | 0.3            |
| Discrepancy in Name/DOB                                   |                                  |                | 41,476                      | 6.0            |
| Discrepancy in Social Security Number                     |                                  |                | 10,318                      | 1.5            |
| Other*  |                                  |                | 171,326                     | 24.9           |
| <b>Visual</b>   | <b>41,417</b>                    | <b>6.0</b>     |                             |                |
| Distant Vision  |                                  |                | 10,435                      | 1.5            |
| Near Vision   |                                  |                | 19,773                      | 2.9            |
| Field of Vision   |                                  |                | 633                         | 0.1            |
| Color Vision  |                                  |                | 10,576                      | 1.5            |
| <b>Other Medical Conditions</b>                           | <b>207,609</b>                   | <b>30.3</b>    |                             |                |
| Current Exam Pending/Denied                               |                                  |                | 16,109                      | 2.4            |
| Urinalysis  |                                  |                | 3,969                       | 0.6            |
| Pathology Codes   |                                  |                | 91,376                      | 13.3           |
| Abnormalities (Items 25-48)                               |                                  |                | 3,317                       | 0.5            |
| Medication  |                                  |                | 71,961                      | 10.5           |
| Restrictions  |                                  |                | 20,877                      | 3.0            |
| <b>Medical History</b>                                    | <b>80,606</b>                    | <b>11.7</b>    |                             |                |
| Previous Exam Special Case                                |                                  |                | 213                         | 0.0+           |
| Medical History   |                                  |                | 53,015                      | 7.7            |
| Previous Exam Pending/Denied                              |                                  |                | 2,878                       | 0.4            |
| Previous Exam Medical Appeals Case                        |                                  |                | 4,821                       | 0.7            |
| Input Exam Medical Appeals Case                           |                                  |                | 1,092                       | 0.2            |
| Follow-up Material Requested                              |                                  |                | 14,748                      | 2.1            |
| Current Information with Previous Record                  |                                  |                | 1,265                       | 0.2            |
| Previous Exam Sent to Washington or<br>Region/ECG Pending |                                  |                | 376                         | 0.1            |
| Follow-up Not Required This Exam                          |                                  |                | 2,198                       | 0.3            |
| <b>Hearing</b>  | <b>10,687</b>                    | <b>1.6</b>     |                             |                |
| Hearing   |                                  |                | 10,687                      | 1.6            |
| <b>Blood Pressure/Pulse</b>                               | <b>13,172</b>                    | <b>1.9</b>     |                             |                |
| Blood Pressure  |                                  |                | 6,869                       | 1.0            |
| Pulse   |                                  |                | 6,303                       | 0.9            |
| <b>TOTAL REJECT MESSAGES</b>                              | <b>687,419</b>                   | <b>100.0</b>   |                             |                |

\* Rejects resulting from validity checks against established edit criteria for height, weight, and address; rejects for certificates not issued due to class, no ticket flag, or bad address; and pathology number assigned rejects.

Source: Civil Aeromedical Institute, Aeromedical Certification Division; RIS: AC 8065-3, Aeromedical Certification Processing Summary.



Table III.C

## AUTHORIZATIONS FOR SPECIAL ISSUANCE AND DENIALS\*

As of: December 31, 1997

| Category<br>Issuance/Denial                          | First<br>Class | Second<br>Class | Third<br>Class | Total        |
|--|----------------|-----------------|----------------|--------------|
| <b><u>Issuances</u></b>                              |                |                 |                |              |
| NTSB Issuance  | 4              | 5               | 4              | 13           |
| Authorizations<br>by AAM-300                         | 896            | 503             | 4,370          | 5,769        |
| Authorizations<br>by AAM-1                           | 232            | 89              | 148            | 469          |
| Authorizations<br>by RFS                             | -              | 7               | 73             | 80           |
| <b>Total Authorizations<br/>for Special Issuance</b> | <b>1,132</b>   | <b>604</b>      | <b>4,595</b>   | <b>6,331</b> |
| <b><u>Final Denials</u></b>                          |                |                 |                |              |
| Final Denials<br>by AAM-300                          | 73             | 86              | 346            | 505          |
| Final Denials<br>by AAM-1                            | 2              | 2               | 4              | 8            |
| Final Denials<br>by RFS                              | -              | 3               | 2              | 5            |
| <b>Total Final Denials</b>                           | <b>75</b>      | <b>91</b>       | <b>352</b>     | <b>518</b>   |

\* Figures include those cases coded under authorizations for special issuance or denials on active master file.

Source: Civil Aeromedical Institute, Aeromedical Certification Division; RIS: AC 8065-1, Pathology Code Summary.

## SECTION IV

### GENERAL AIRMAN POPULATION DATA

This section reflects general data concerning the active airman population.\* The data presented are as of December 31, 1997, and cover the preceding 25 months. The 25-month time period was used to describe the active airman population because a medically certified airman is considered "active" for a maximum of 25 months after his/her last FAA physical examination, i.e., regardless of the class of medical certificate issued, it is valid for third-class purposes for a period of time up to 25 months. Those airmen who have allowed their medical certification to lapse into a time period greater than 25 months would be considered "inactive" airmen.

Data are presented by class of medical certificate issued and do not include applications pending or denied. Table IV.A presents data by "effective status" of medical certification. This refers to the time lapse since the certificate was issued as opposed to the class issued. Present FAA regulations stipulate that air transport pilots must be first-class medically certified at six-month intervals, commercial pilots must be second-class medically certified annually, and general aviation airmen must obtain third-class medical certification every two years. Thus, an airman may be first- or second-class medically certified and the time lapse since examination would reduce the "effective status" to a lower class.

\*On September 16, 1996, "effective status" of medical certificates for some third-class applicants was revised. Data are not yet available.

**Table IV.A**  
**REGIONAL DISTRIBUTION OF ACTIVE AIRMEN BY CLASS OF CERTIFICATE AND EFFECTIVE STATUS\***  
**As of: December 31, 1997**

| Region                            | First Class     |                            |               | Second Class    |                            |               | Third Class           |                            |                | Total Active Airmen    |                         |                            |                |
|-----------------------------------|-----------------|----------------------------|---------------|-----------------|----------------------------|---------------|-----------------------|----------------------------|----------------|------------------------|-------------------------|----------------------------|----------------|
|                                   | Class Certified | Effective Status (Class)** |               | Class Certified | Effective Status (Class)** |               | Third Class Certified | Effective Status (Class)** |                | Total Airmen Certified | Percent of Total Airmen | Effective Status (Class)** |                |
|                                   |                 | 1                          | 2             |                 | 3                          | 2             |                       | 3                          | 1              |                        |                         | 2                          | 3              |
| Alaskan                           | 1,547           | 863                        | 519           | 165             | 1,876                      | 802           | 4,175                 | 4,175                      | 8,400          | 1.4                    | 863                     | 2,395                      | 5,142          |
| Central                           | 4,281           | 2,512                      | 1,273         | 496             | 7,288                      | 4,826         | 16,651                | 16,651                     | 28,220         | 4.9                    | 2,512                   | 6,099                      | 19,609         |
| Eastern                           | 14,832          | 8,688                      | 4,322         | 1,822           | 16,350                     | 10,684        | 37,226                | 37,226                     | 68,408         | 11.6                   | 8,688                   | 15,003                     | 44,717         |
| Great Lakes                       | 19,995          | 11,957                     | 5,645         | 2,393           | 21,030                     | 13,937        | 53,405                | 53,405                     | 94,430         | 16.0                   | 11,957                  | 19,582                     | 62,891         |
| New England                       | 5,666           | 3,448                      | 1,604         | 614             | 5,933                      | 3,879         | 13,290                | 13,290                     | 24,889         | 4.3                    | 3,448                   | 5,483                      | 15,958         |
| Northwest-Mountain                | 14,023          | 8,541                      | 3,913         | 1,569           | 14,673                     | 9,473         | 29,722                | 29,722                     | 58,418         | 9.9                    | 8,541                   | 13,386                     | 36,491         |
| Southern                          | 30,884          | 18,287                     | 8,965         | 3,632           | 26,758                     | 17,571        | 49,772                | 49,772                     | 107,414        | 18.2                   | 18,287                  | 26,536                     | 62,591         |
| Southwest                         | 16,632          | 10,057                     | 4,761         | 1,814           | 18,631                     | 12,672        | 30,746                | 30,746                     | 66,009         | 11.2                   | 10,057                  | 17,433                     | 38,519         |
| Western-Pacific                   | 20,543          | 11,659                     | 6,071         | 2,813           | 22,377                     | 14,534        | 48,397                | 48,397                     | 91,317         | 15.5                   | 11,659                  | 20,605                     | 59,053         |
| <b>U.S. TOTAL</b>                 | <b>128,403</b>  | <b>76,012</b>              | <b>37,073</b> | <b>15,318</b>   | <b>135,718</b>             | <b>89,452</b> | <b>283,384</b>        | <b>283,384</b>             | <b>547,505</b> | <b>93.0</b>            | <b>76,012</b>           | <b>126,522</b>             | <b>344,971</b> |
| Military                          | 5,531           | 2,727                      | 1,860         | 944             | 5,229                      | 3,020         | 998                   | 998                        | 11,758         | 2.0                    | 2,727                   | 4,880                      | 4,151          |
| International                     | 14,860          | 5,993                      | 4,588         | 4,279           | 6,549                      | 2,901         | 8,259                 | 8,259                      | 29,668         | 5.0                    | 5,993                   | 8,236                      | 15,439         |
| <b>TOTAL</b>                      | <b>148,794</b>  | <b>84,732</b>              | <b>43,521</b> | <b>20,541</b>   | <b>147,496</b>             | <b>96,120</b> | <b>292,641</b>        | <b>292,641</b>             | <b>588,931</b> | <b>100.0</b>           | <b>84,732</b>           | <b>139,638</b>             | <b>364,561</b> |
| Percent of Total Certified Airmen | (25.3)          |                            |               |                 | (25.0)                     |               | (49.7)                |                            | (100.0)        |                        |                         |                            |                |

\* Figures are based on a 25-month summary from the computer tape files; only certified airmen are included.

\*\* Refers to the time lapse since the certificate was issued as opposed to the class issued. Present FAA regulations stipulate that air transport pilots must be first-class medically certified at six-month intervals, commercial pilots must be second-class medically certified annually, and general aviation airmen must obtain third-class medical certification every two years. Thus, an airman may be first- or second-class medically certified and the time lapse since examination would reduce the "effective status" to a lesser class.

Source: Civil Aeromedical Institute, Aeromedical Certification Division; RIS: AC 8065-4, Examination Time Period Summary.

Table IV.B

**ACTIVE AIRMEN'S STATE OF RESIDENCE  
BY SEX AND CLASS OF CERTIFICATE ISSUED\***  
As of: December 31, 1997

| State                | First Class |        | Second Class |        | Third Class |        | Total Airmen |        |
|----------------------|-------------|--------|--------------|--------|-------------|--------|--------------|--------|
|                      | Male        | Female | Male         | Female | Male        | Female | Male         | Female |
| Alabama              | 832         | 20     | 2,143        | 60     | 3,613       | 192    | 6,588        | 272    |
| Alaska               | 1,563       | 67     | 2,530        | 156    | 3,766       | 327    | 7,859        | 550    |
| Arizona              | 4,555       | 219    | 3,475        | 203    | 6,500       | 554    | 14,530       | 976    |
| Arkansas             | 592         | 18     | 1,546        | 31     | 2,543       | 150    | 4,681        | 199    |
| California           | 13,010      | 722    | 15,707       | 900    | 34,867      | 2,952  | 63,584       | 4,574  |
| Colorado             | 4,802       | 338    | 3,327        | 209    | 5,727       | 502    | 13,856       | 1,049  |
| Connecticut          | 1,800       | 84     | 1,392        | 71     | 2,814       | 222    | 6,006        | 377    |
| Delaware             | 287         | 18     | 323          | 12     | 598         | 35     | 1,208        | 65     |
| District of Columbia | 61          | 11     | 82           | 10     | 211         | 27     | 354          | 48     |
| Florida              | 13,353      | 553    | 10,512       | 457    | 16,046      | 1,268  | 39,911       | 2,278  |
| Georgia              | 5,937       | 149    | 3,186        | 118    | 6,527       | 411    | 15,650       | 678    |
| Hawaii               | 960         | 59     | 688          | 41     | 476         | 46     | 2,124        | 146    |
| Idaho                | 572         | 18     | 1,052        | 50     | 2,230       | 164    | 3,854        | 232    |
| Illinois             | 4,719       | 308    | 4,405        | 262    | 9,967       | 663    | 19,091       | 1,233  |
| Indiana              | 1,961       | 108    | 2,190        | 103    | 6,117       | 359    | 10,268       | 570    |
| Iowa                 | 585         | 25     | 1,343        | 48     | 3,547       | 203    | 5,475        | 276    |
| Kansas               | 1,039       | 39     | 2,268        | 100    | 4,437       | 265    | 7,744        | 404    |
| Kentucky             | 1,861       | 70     | 1,210        | 44     | 2,654       | 165    | 5,725        | 279    |
| Louisiana            | 1,062       | 31     | 1,939        | 52     | 2,421       | 115    | 5,422        | 198    |
| Maine                | 495         | 18     | 652          | 32     | 1,503       | 96     | 2,650        | 146    |
| Maryland             | 1,487       | 79     | 1,851        | 83     | 3,961       | 326    | 7,299        | 488    |
| Massachusetts        | 1,487       | 86     | 2,077        | 151    | 4,936       | 398    | 8,500        | 635    |
| Michigan             | 2,799       | 171    | 3,595        | 187    | 9,435       | 644    | 15,829       | 1,002  |
| Minnesota            | 3,979       | 273    | 2,594        | 147    | 6,827       | 408    | 13,400       | 828    |
| Mississippi          | 630         | 24     | 1,228        | 17     | 1,705       | 105    | 3,563        | 146    |
| Missouri             | 2,168       | 82     | 2,325        | 113    | 5,494       | 372    | 9,987        | 567    |
| Montana              | 381         | 8      | 988          | 42     | 1,729       | 113    | 3,098        | 163    |
| Nebraska             | 487         | 14     | 1,027        | 30     | 2,139       | 112    | 3,653        | 156    |
| Nevada               | 1,692       | 65     | 1,264        | 55     | 2,231       | 254    | 5,187        | 374    |
| New Hampshire        | 1,275       | 51     | 870          | 63     | 1,583       | 121    | 3,728        | 235    |
| New Jersey           | 2,393       | 92     | 2,316        | 127    | 5,618       | 403    | 10,327       | 622    |
| New Mexico           | 724         | 34     | 1,001        | 73     | 1,918       | 162    | 3,643        | 269    |
| New York             | 3,100       | 142    | 3,788        | 183    | 8,984       | 623    | 15,872       | 948    |
| North Carolina       | 3,106       | 119    | 2,998        | 110    | 6,409       | 400    | 12,513       | 629    |
| North Dakota         | 438         | 51     | 691          | 25     | 1,062       | 54     | 2,191        | 130    |
| Ohio                 | 3,363       | 170    | 3,765        | 209    | 9,290       | 658    | 16,418       | 1,037  |
| Oklahoma             | 1,500       | 50     | 2,686        | 136    | 3,911       | 284    | 8,097        | 470    |
| Oregon               | 980         | 59     | 2,100        | 141    | 5,373       | 454    | 8,453        | 654    |
| Pennsylvania         | 3,772       | 174    | 3,618        | 192    | 8,065       | 552    | 15,455       | 918    |
| Rhode Island         | 221         | 9      | 286          | 21     | 611         | 59     | 1,118        | 89     |
| South Carolina       | 1,137       | 35     | 1,445        | 40     | 2,923       | 181    | 5,505        | 256    |
| South Dakota         | 238         | 11     | 609          | 19     | 1,049       | 48     | 1,896        | 78     |
| Tennessee            | 2,804       | 105    | 2,439        | 111    | 4,502       | 295    | 9,745        | 511    |
| Texas                | 13,191      | 414    | 10,956       | 470    | 17,703      | 1,334  | 41,850       | 2,218  |

(Continued)

Table IV.B (Continued)

**ACTIVE AIRMEN'S STATE OF RESIDENCE  
BY SEX AND CLASS OF CERTIFICATE ISSUED\***  
As of: December 31, 1997

| State               | First Class    |              | Second Class   |              | Third Class    |               | Total Airmen   |               |
|---------------------|----------------|--------------|----------------|--------------|----------------|---------------|----------------|---------------|
|                     | Male           | Female       | Male           | Female       | Male           | Female        | Male           | Female        |
| Utah                | 1,663          | 49           | 1,266          | 69           | 2,289          | 133           | 5,218          | 251           |
| Vermont             | 260            | 15           | 292            | 23           | 724            | 67            | 1,276          | 105           |
| Virginia            | 3,600          | 153          | 3,050          | 150          | 5,321          | 427           | 11,971         | 730           |
| Washington          | 5,078          | 265          | 4,480          | 281          | 8,552          | 764           | 18,110         | 1,310         |
| West Virginia       | 227            | 9            | 497            | 18           | 983            | 46            | 1,707          | 73            |
| Wisconsin           | 1,683          | 84           | 2,088          | 93           | 6,078          | 445           | 9,849          | 622           |
| Wyoming             | 246            | 13           | 398            | 20           | 931            | 71            | 1,575          | 104           |
| <b>SUBTOTAL</b>     | <b>126,162</b> | <b>5,781</b> | <b>128,558</b> | <b>6,358</b> | <b>258,900</b> | <b>19,029</b> | <b>513,613</b> | <b>31,168</b> |
| NASA                | 6              | 2            | 2,684          | 54           | 1,392          | 104           | 4,082          | 160           |
| Military            | 1,023          | 50           | 2,516          | 143          | 3,763          | 297           | 7,302          | 490           |
| International       | 15,403         | 374          | 6,889          | 294          | 8,505          | 651           | 30,797         | 1,319         |
| <b>TOTAL AIRMEN</b> | <b>142,587</b> | <b>6,207</b> | <b>140,647</b> | <b>6,849</b> | <b>272,560</b> | <b>20,081</b> | <b>555,794</b> | <b>33,137</b> |

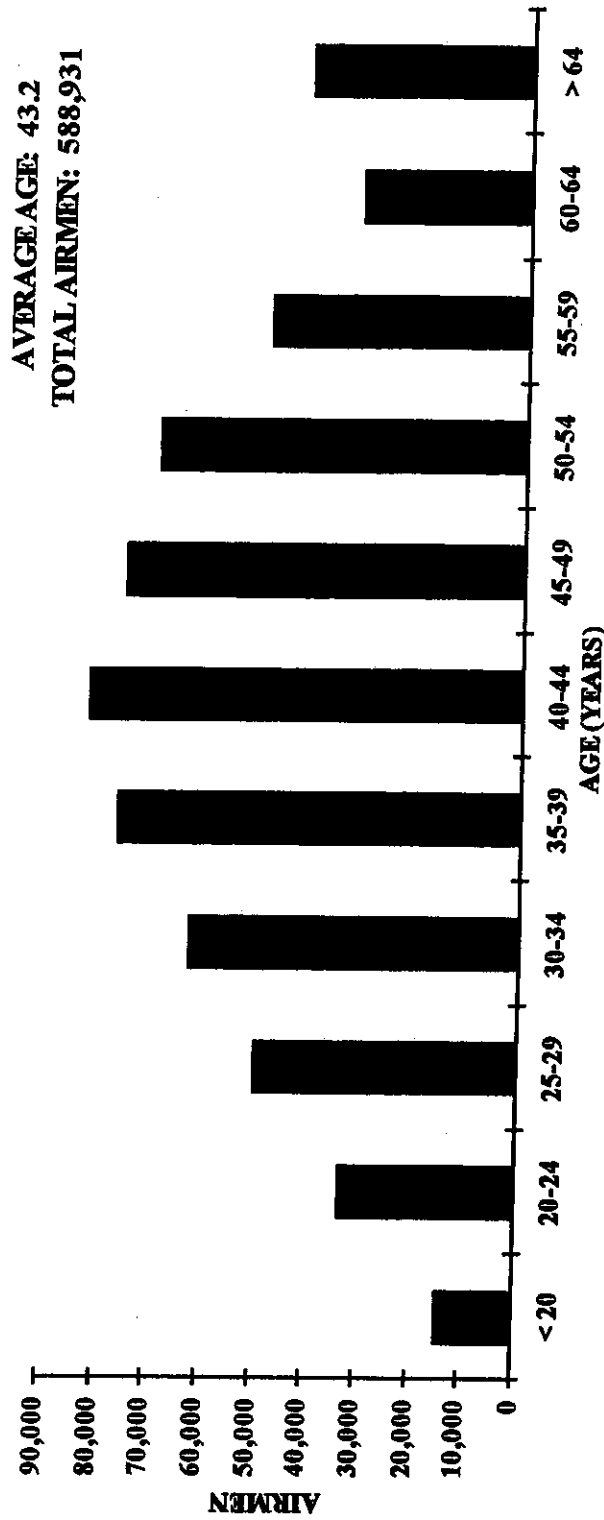
\* Totals are based on active airmen certified within the past 25 months.

Source: Civil Aeromedical Institute, Aeromedical Certification Division; RIS: AC 8500-1, Aeromedical Certification Statistical Handbook Computer Run.

# FIGURE IV.C

## AGE DISTRIBUTION OF MEDICALLY CERTIFIED AIRMEN

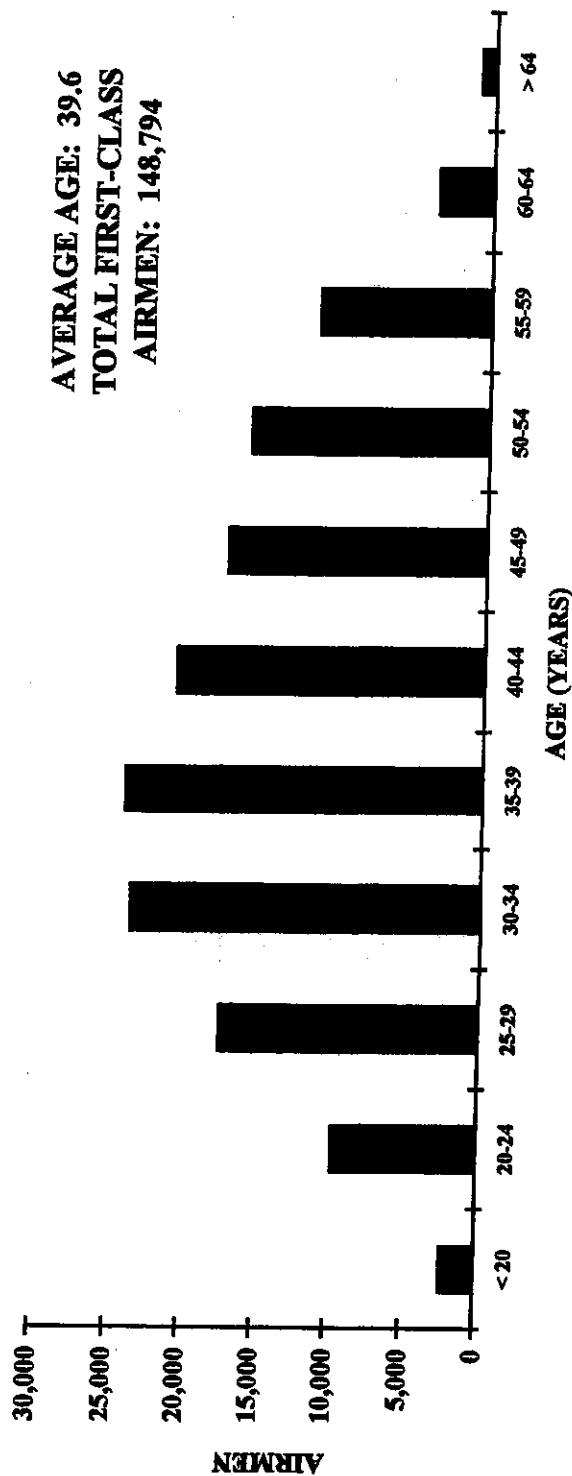
As of: December 31, 1997



Brackets are indicative of age class intervals wherein magnitudes are not apparent on this scale. In such instances, the accompanying table (Table IV.G) should be consulted for frequencies.

Source: Civil Aeromedical Institute, Aeromedical Certification Division; RIS: AC 8500-1, Aeromedical Certification Statistical Handbook Computer Run.

**FIGURE IV.D**  
**AGE DISTRIBUTION OF MEDICALLY CERTIFIED FIRST-CLASS AIRMEN**  
**As of: December 31, 1997**

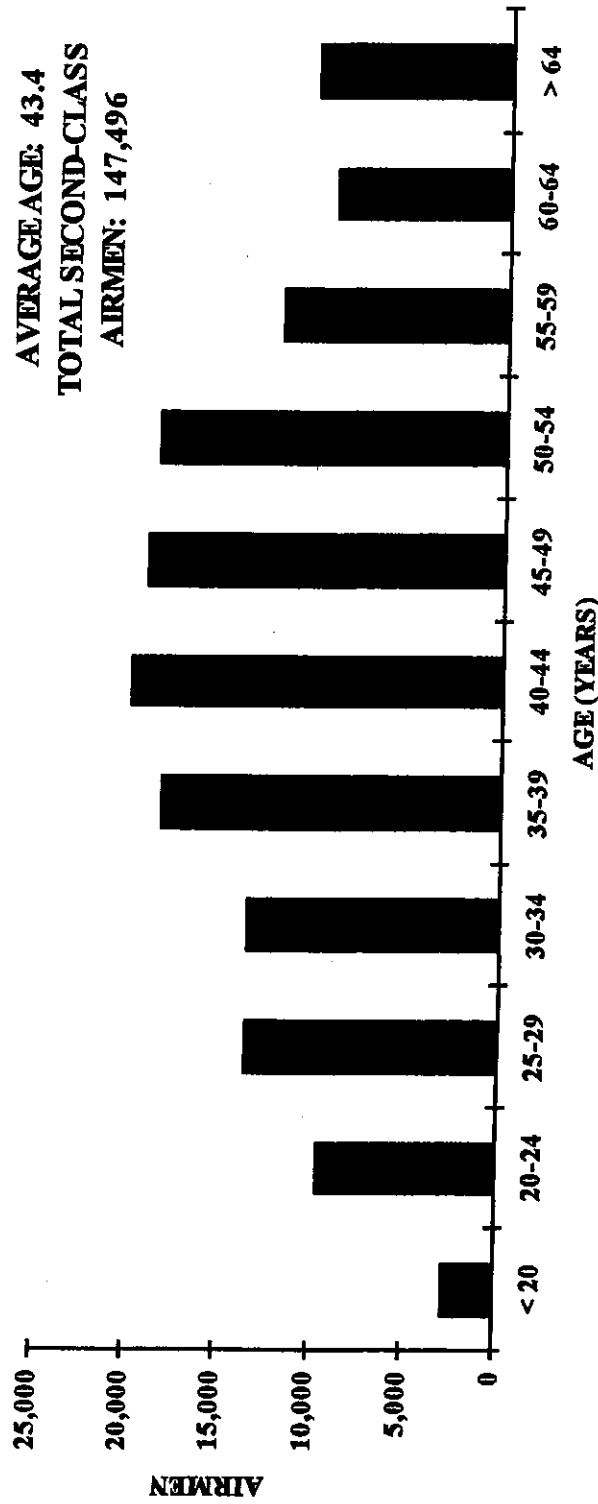


Brackets are indicative of age class intervals wherein magnitudes are not apparent on this scale. In such instances, the accompanying table (Table IV.G) should be consulted for frequencies.

Source: Civil Aeromedical Institute, Aeromedical Certification Division; RIS: AC 8500-1, Aeromedical Certification Statistical Handbook Computer Run.

# FIGURE IV.E

## AGE DISTRIBUTION OF MEDICALLY CERTIFIED SECOND-CLASS AIRMEN As of: December 31, 1997



Brackets are indicative of age class intervals wherein magnitudes are not apparent on this scale. In such instances, the accompanying table (Table IV.G) should be consulted for frequencies.

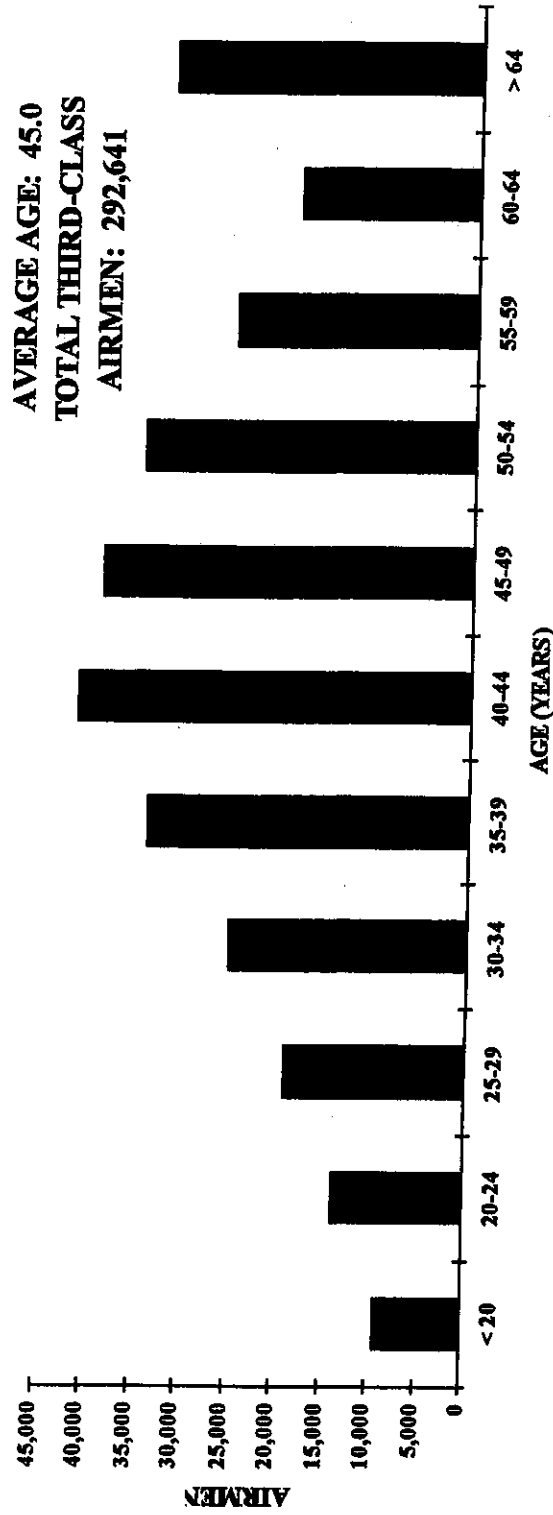
Source: Civil Aeromedical Institute, Aeromedical Certification Division; RIS: AC 8500-1, Aeromedical Certification Statistical Handbook Computer Run.



**FIGURE IV.F**

**AGE DISTRIBUTION OF MEDICALLY CERTIFIED THIRD-CLASS AIRMEN**

As of: December 31, 1997



Brackets are indicative of age class intervals wherein magnitudes are not apparent on this scale. In such instances, the accompanying table (Table IV.G) should be consulted for frequencies.

Source: Civil Aeromedical Institute, Aeromedical Certification Division; RIS: AC 8500-1, Aeromedical Certification Statistical Handbook Computer Run.

Table IV.G

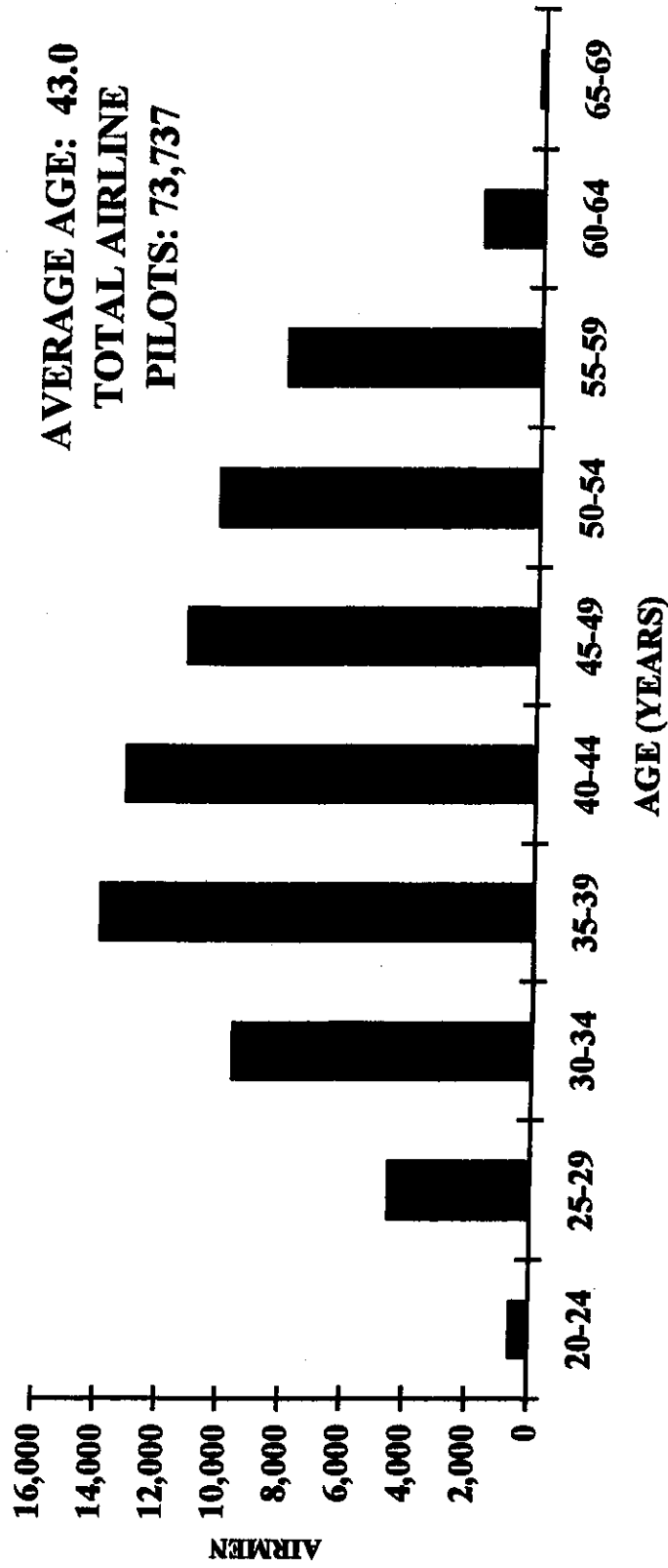
AGE DISTRIBUTION OF ACTIVE AIRMEN BY CLASS AND SEX\*  
As of: December 31, 1997

| Age                | First Class    |              | Second Class   |              | Third Class    |               | Total Airmen   |               |
|--------------------|----------------|--------------|----------------|--------------|----------------|---------------|----------------|---------------|
|                    | Male           | Female       | Male           | Female       | Male           | Female        | Male           | Female        |
| Less than 15       | 1              | 1            | -              | -            | 13             | 3             | 14             | 4             |
| 15 - 19            | 2,106          | 299          | 2,341          | 333          | 7,913          | 1,255         | 12,360         | 1,887         |
| 20 - 24            | 8,816          | 988          | 8,612          | 966          | 12,356         | 1,553         | 29,784         | 3,507         |
| 25 - 29            | 16,316         | 1,257        | 12,605         | 939          | 17,113         | 1,762         | 46,034         | 3,958         |
| 30 - 34            | 22,442         | 1,349        | 12,861         | 750          | 23,155         | 2,077         | 58,458         | 4,176         |
| 35 - 39            | 23,102         | 1,116        | 17,327         | 956          | 31,329         | 2,567         | 71,758         | 4,639         |
| 40 - 44            | 20,188         | 674          | 19,142         | 931          | 38,375         | 2,959         | 77,705         | 4,564         |
| 45 - 49            | 17,241         | 327          | 18,468         | 755          | 36,449         | 2,652         | 72,158         | 3,734         |
| 50 - 54            | 16,028         | 124          | 18,210         | 502          | 32,675         | 2,112         | 66,913         | 2,738         |
| 55 - 59            | 11,521         | 52           | 11,798         | 315          | 24,092         | 1,363         | 47,411         | 1,730         |
| 60 - 64            | 3,790          | 14           | 9,141          | 179          | 17,845         | 818           | 30,776         | 1,011         |
| 65 - 69            | 756            | 4            | 5,661          | 113          | 15,713         | 538           | 22,130         | 655           |
| 70 - 74            | 185            | 2            | 2,845          | 70           | 10,019         | 295           | 13,049         | 367           |
| 75 - 79            | 81             | -            | 1,436          | 34           | 4,637          | 113           | 6,154          | 147           |
| 80 - 84            | 8              | -            | 160            | 4            | 693            | 9             | 861            | 13            |
| 85 and over        | 6              | -            | 40             | 2            | 183            | 5             | 229            | 7             |
| <b>TOTAL</b>       | <b>142,587</b> | <b>6,207</b> | <b>140,647</b> | <b>6,849</b> | <b>272,560</b> | <b>20,081</b> | <b>555,794</b> | <b>33,137</b> |
| <b>Average Age</b> | <b>40.0</b>    | <b>32.3</b>  | <b>43.8</b>    | <b>37.6</b>  | <b>45.5</b>    | <b>40.8</b>   | <b>43.6</b>    | <b>38.6</b>   |

\* Totals are based on active certified airmen within the past 25 months.

Source: Civil Aeromedical Institute, Aeromedical Certification Division; RIS: 8500-1, Aeromedical Certification Statistical Handbook Computer Run.

**FIGURE IV.H**  
**AGE DISTRIBUTION OF AIRLINE PILOTS**  
As of: December 31, 1997



Source: Civil Aeromedical Institute, Aeromedical Certification Division; RIS: AC 8500-1, Aeromedical Certification Statistical Handbook Computer Run.

Table IV.I

**AGE DISTRIBUTION OF AIRLINE PILOTS\***  
As of: December 31, 1997

| Age Groups<br>(1)  | Airline Pilots<br>(2) | Certified First-<br>Class Airmen**<br>(3) | Airline Pilots<br>(4) | Percent of Total<br>Class Airmen (5) |
|--------------------|-----------------------|---|-----------------------|--------------------------------------|
| 20 - 24            | 597                   | 9,804                                     | 0.8                   | 6.7                                  |
| 25 - 29            | 4,531                 | 17,573                                    | 6.1                   | 12.0                                 |
| 30 - 34            | 9,641                 | 23,791                                    | 13.1                  | 16.3                                 |
| 35 - 39            | 13,985                | 24,218                                    | 19.0                  | 16.6                                 |
| 40 - 44            | 13,194                | 20,862                                    | 17.9                  | 14.3                                 |
| 45 - 49            | 11,289                | 17,568                                    | 15.3                  | 12.0                                 |
| 50 - 54            | 10,340                | 16,152                                    | 14.1                  | 11.1                                 |
| 55 - 59            | 8,147                 | 11,573                                    | 11.0                  | 7.9                                  |
| <b>SUBTOTAL</b>    | <b>71,724</b>         | <b>141,541</b>                            | <b>97.3</b>           | <b>96.9</b>                          |
| 60 - 64            | 1,882                 | 3,804                                     | 2.6                   | 2.6                                  |
| 65 - 69            | 131                   | 760                                       | 0.1                   | 0.5                                  |
| <b>TOTAL</b>       | <b>73,737</b>         | <b>146,105</b>                            | <b>100.0</b>          | <b>100.0</b>                         |
| <b>Average Age</b> | <b>43.0</b>           | <b>39.6</b>                               |                       |                                      |

\* Airline Pilots, Column (2), were determined by the combination of first-class medical certificate issuance during the preceding 13 months and an occupation of "pilot for an airline". Figures in Column (3) were based on first-class medical certificate issuance during the preceding 25 months.

\*\* Extreme age groups were deleted to more closely compare with age requirements for airline pilots. Under Part 121, Federal Aviation Regulations, no person may serve as a pilot of an airplane engaged in air carrier operations if that person has reached his/her 60th birthday. However, some airmen falling into this category still list their occupation as "pilot" even though their actual duties do not involve control of the airplane.

Source: Civil Aeromedical Institute, Aeromedical Certification Division; RIS: AC 8500-1, Aeromedical Certification Statistical Handbook Computer Run.

Table IV.J

**HEIGHT DISTRIBUTION OF ACTIVE AIRMEN BY CLASS AND SEX\***  
As of: December 31, 1997

| Height<br>in Inches | First Class    |              | Second Class   |              | Third Class    |               | Total Airmen   |               |
|---------------------|----------------|--------------|----------------|--------------|----------------|---------------|----------------|---------------|
|                     | Male           | Female       | Male           | Female       | Male           | Female        | Male           | Female        |
| Less than 59        | 123            | 39           | 191            | 59           | 392            | 213           | 706            | 311           |
| 59                  | 49             | 11           | 85             | 40           | 178            | 113           | 312            | 164           |
| 60                  | 93             | 55           | 160            | 125          | 371            | 496           | 624            | 676           |
| 61                  | 75             | 117          | 121            | 199          | 333            | 721           | 529            | 1,037         |
| 62                  | 114            | 349          | 145            | 496          | 436            | 1,677         | 695            | 2,522         |
| 63                  | 196            | 512          | 334            | 674          | 836            | 2,131         | 1,366          | 3,317         |
| 64                  | 699            | 863          | 948            | 997          | 2,072          | 2,997         | 3,719          | 4,857         |
| 65                  | 1,626          | 930          | 1,964          | 982          | 4,120          | 2,885         | 7,710          | 4,797         |
| 66                  | 4,274          | 1,034        | 4,814          | 1,020        | 9,947          | 3,041         | 19,035         | 5,095         |
| 67                  | 7,624          | 833          | 8,406          | 872          | 16,750         | 2,310         | 32,780         | 4,015         |
| 68                  | 13,046         | 642          | 13,549         | 645          | 26,953         | 1,615         | 53,548         | 2,902         |
| 69                  | 16,498         | 414          | 16,769         | 389          | 31,929         | 945           | 65,196         | 1,748         |
| 70                  | 21,633         | 235          | 21,354         | 195          | 42,203         | 506           | 85,190         | 936           |
| 71                  | 20,160         | 87           | 19,720         | 77           | 38,483         | 228           | 78,363         | 392           |
| 72                  | 23,346         | 57           | 22,328         | 56           | 41,126         | 119           | 86,800         | 232           |
| 73                  | 13,221         | 14           | 11,943         | 13           | 22,788         | 38            | 47,952         | 65            |
| 74                  | 10,197         | 10           | 9,082          | 7            | 16,743         | 16            | 36,022         | 33            |
| 75                  | 5,093          | 2            | 4,529          | 1            | 8,715          | 10            | 18,337         | 13            |
| Over 75             | 4,520          | 3            | 4,205          | 2            | 8,185          | 20            | 16,910         | 25            |
| <b>TOTAL</b>        | <b>142,587</b> | <b>6,207</b> | <b>140,647</b> | <b>6,849</b> | <b>272,560</b> | <b>20,081</b> | <b>555,794</b> | <b>33,137</b> |
| <b>Average</b>      |                |              |                |              |                |               |                |               |
| <b>Height</b>       | <b>70.7</b>    | <b>65.7</b>  | <b>70.5</b>    | <b>65.3</b>  | <b>70.5</b>    | <b>65.1</b>   | <b>70.5</b>    | <b>65.3</b>   |

\* Totals are based on active airmen certified within the past 25 months. Height is rounded to the nearest inch.

Source: Civil Aeromedical Institute, Aeromedical Certification Division; RIS: AC 8500-1, Aeromedical Certification Statistical Handbook Computer Run.

Table IV.K

**WEIGHT DISTRIBUTION OF ACTIVE AIRMEN BY CLASS AND SEX\***  
As of: December 31, 1997

| Weight<br>in Pounds | First Class    |              | Second Class   |              | Third Class    |               | Total Airmen   |               |
|---------------------|----------------|--------------|----------------|--------------|----------------|---------------|----------------|---------------|
|                     | Male           | Female       | Male           | Female       | Male           | Female        | Male           | Female        |
| Less than 90        | 23             | 8            | 15             | 15           | 40             | 36            | 78             | 59            |
| 90 - 99             | 13             | 25           | 6              | 45           | 28             | 117           | 47             | 187           |
| 100 - 109           | 71             | 245          | 41             | 260          | 153            | 749           | 265            | 1,254         |
| 110 - 119           | 263            | 745          | 231            | 789          | 580            | 2,175         | 1,074          | 3,709         |
| 120 - 129           | 836            | 1,289        | 851            | 1,231        | 1,888          | 3,457         | 3,575          | 5,977         |
| 130 - 139           | 2,543          | 1,344        | 2,559          | 1,293        | 4,882          | 3,773         | 9,984          | 6,410         |
| 140 - 149           | 5,918          | 976          | 5,439          | 1,040        | 10,177         | 3,019         | 21,534         | 5,035         |
| 150 - 159           | 12,016         | 644          | 10,417         | 721          | 19,070         | 2,277         | 41,503         | 3,642         |
| 160 - 169           | 18,221         | 346          | 15,626         | 475          | 28,916         | 1,491         | 62,763         | 2,312         |
| 170 - 179           | 22,271         | 208          | 19,551         | 335          | 36,642         | 991           | 78,464         | 1,534         |
| 180 - 189           | 23,019         | 130          | 20,876         | 215          | 39,267         | 683           | 83,162         | 1,028         |
| 190 - 199           | 18,643         | 101          | 18,055         | 146          | 35,043         | 450           | 71,741         | 697           |
| 200 - 209           | 13,562         | 54           | 14,730         | 87           | 28,496         | 288           | 56,788         | 429           |
| 210 - 219           | 9,393          | 26           | 10,537         | 52           | 21,111         | 176           | 41,041         | 254           |
| 220 - 229           | 6,496          | 23           | 7,593          | 39           | 15,675         | 137           | 29,764         | 199           |
| 230 - 239           | 3,792          | 11           | 5,103          | 32           | 10,597         | 102           | 19,492         | 145           |
| 240 - 249           | 2,264          | 15           | 3,364          | 26           | 7,027          | 54            | 12,655         | 95            |
| Over 249            | 3,243          | 17           | 5,653          | 48           | 12,968         | 106           | 21,864         | 171           |
| <b>TOTAL</b>        | <b>142,587</b> | <b>6,207</b> | <b>140,647</b> | <b>6,849</b> | <b>272,560</b> | <b>20,081</b> | <b>555,794</b> | <b>33,137</b> |
| <b>Average</b>      |                |              |                |              |                |               |                |               |
| <b>Weight</b>       | <b>186.1</b>   | <b>139.8</b> | <b>190.0</b>   | <b>143.6</b> | <b>191.2</b>   | <b>144.4</b>  | <b>189.6</b>   | <b>143.4</b>  |

\* Totals are based on active airmen certified within the past 25 months. Weight is rounded to the nearest pound.

Source: Civil Aeromedical Institute, Aeromedical Certification Division; RIS: AC 8500-1, Aeromedical Certification Statistical Handbook Computer Run.

Table IV.L

**ACTIVE AIRMEN BY OCCUPATION, CLASS AND SEX\***  
As of: December 31, 1997

| Occupation Code                              | First Class    |              | Second Class   |              | Third Class    |               | Total          |               |              |
|--|----------------|--------------|----------------|--------------|----------------|---------------|----------------|---------------|--------------|
|  | Male           | Female       | Male           | Female       | Male           | Female        | Male           | Female        |              |
| 1 Pilot (Scheduled or Non-Scheduled Airline) | 71,503         | 2,273        | 3,274          | 92           | 171            | 4             | 74,948         | 2,369         | 13.1         |
| 2 Flight Engineer                            | 1,429          | 27           | 2,439          | 31           | 44             | 1             | 3,912          | 59            | 0.7          |
| 3 Flight Navigator/Flight Radio Operator     | 40             | 1            | 47             | 2            | 19             | 1             | 106            | 4             | 0.0+         |
| 4 Business or Executive Pilot                | 28,023         | 902          | 400            | 9            | 40             | 1             | 28,463         | 912           | 5.1          |
| 5 Commercial Pilot (Self Employed)           | 50             | 3            | 3,025          | 100          | 20             | -             | 3,095          | 103           | 0.6          |
| 6 Commercial Pilot (Not Self Employed)       | 368            | 9            | 18,204         | 448          | 52             | 1             | 18,624         | 458           | 3.2          |
| 7 Aero Application (Agriculture)             | 75             | 5            | 2,212          | 13           | 62             | 7             | 2,349          | 25            | 0.4          |
| 8 Air Traffic Controller**                   | 32             | 4            | 1,650          | 173          | 70             | 8             | 1,752          | 185           | 0.3          |
| 9 Flight Instructor                          | 4,286          | 438          | 3,845          | 398          | 65             | 9             | 8,196          | 845           | 1.5          |
| 0 Aircraft Mechanic & Fixed Base Operator    | 361            | 10           | 2,062          | 27           | 778            | 5             | 3,201          | 42            | 0.6          |
| X Not Given or Non-Aeronautical Occupation   | 36,374         | 2,531        | 103,417        | 5,551        | 271,132        | 20,035        | 410,923        | 28,117        | 74.5         |
| F Flight Service Station Specialist          | 46             | 4            | 72             | 5            | 107            | 9             | 225            | 18            | 0.0+         |
| <b>TOTAL</b>                                 | <b>142,587</b> | <b>6,207</b> | <b>140,647</b> | <b>6,849</b> | <b>272,560</b> | <b>20,081</b> | <b>555,794</b> | <b>33,137</b> | <b>100.0</b> |

\* Totals are based on active airmen certified within the past 25 months. Occupation was based on response by the airmen in Block 11 of FAA Form 8500-8; if not given, occupation was classified as "non-aeronautical". Basis for percentage computations is number in each occupation category to total airmen.

\*\* Includes military ATCs and civilian (FAA) ATCs who are also pilots and/or were issued a medical certificate.

Source: Aeronautical Institute, Aeronautical Certification Division; RIS: AC-1, Aeronautical Certification Statistical Handbook Computer Run.

Table IV.M

**EMPLOYERS OF ACTIVE AIRMEN BY CLASS OF CERTIFICATE ISSUED\***  
**As of: December 31, 1997**

| <b>Employer</b>                | <b>First Class</b> | <b>Second Class</b> | <b>Third Class</b> | <b>Total</b>  | <b>Major Percent of Total</b> |
|--------------------------------|--------------------|---------------------|--------------------|---------------|-------------------------------|
| Air Wisconsin                  | 132                | 1                   | 4                  | 137           |                               |
| Alaska Airlines                | 888                | 204                 | 7                  | 1,099         |                               |
| Aloha Airlines                 | 181                | 26                  | -                  | 207           |                               |
| American Airlines              | 7,737              | 1,567               | 80                 | 9,384         |                               |
| American Eagle                 | 1,197              | 10                  | 4                  | 1,211         |                               |
| America West                   | 1,259              | 58                  | 13                 | 1,330         |                               |
| Atlantic Southeast             | 603                | 22                  | 2                  | 627           |                               |
| British Airways                | 35                 | 4                   | 4                  | 43            |                               |
| Business Express               | 323                | 6                   | 7                  | 336           |                               |
| China Airlines                 | 88                 | 2                   | 1                  | 91            |                               |
| Comair, Inc.                   | 898                | 47                  | 7                  | 952           |                               |
| Continental Airlines           | 4,070              | 550                 | 59                 | 4,679         |                               |
| Delta Airlines                 | 8,580              | 99                  | 92                 | 8,771         |                               |
| Evergreen Airlines             | 130                | 65                  | -                  | 195           |                               |
| Federal Express                | 3,095              | 299                 | 47                 | 3,441         |                               |
| Florida Airlines               | 10                 | -                   | -                  | 10            |                               |
| Hawaiian Airlines              | 217                | 57                  | 2                  | 276           |                               |
| Henson Airlines                | 12                 | -                   | -                  | 12            |                               |
| Horizon Airlines               | 582                | 40                  | 9                  | 631           |                               |
| Japan Airlines                 | 45                 | 164                 | 1                  | 210           |                               |
| KLM - Royal Dutch Airlines     | 58                 | 9                   | 1                  | 68            |                               |
| Korean Airlines                | 1,024              | 142                 | 2                  | 1,168         |                               |
| Lufthansa-German Airlines      | 178                | 36                  | 4                  | 218           |                               |
| Mesa Airlines                  | 834                | 6                   | 2                  | 842           |                               |
| Mesaba Airlines                | 533                | 5                   | 8                  | 546           |                               |
| Midway Airlines                | 144                | 5                   | 1                  | 150           |                               |
| Northwest Airlines             | 5,599              | 104                 | 158                | 5,861         |                               |
| Pan Amer. World Airways        | 128                | 2                   | 1                  | 131           |                               |
| Pennsylvania Airlines          | 6                  | 1                   | -                  | 7             |                               |
| Piedmont Aviation              | 327                | 15                  | 4                  | 346           |                               |
| Saudi Arabian Airlines         | 1,185              | 96                  | 3                  | 1,284         |                               |
| Simmons                        | 253                | 9                   | 2                  | 264           |                               |
| Southwest Airlines             | 2,392              | 24                  | 39                 | 2,455         |                               |
| Trans World Airlines           | 2,754              | 154                 | 22                 | 2,930         |                               |
| U.S. Air                       | 4,400              | 491                 | 40                 | 4,931         |                               |
| United Airlines                | 8,527              | 630                 | 80                 | 9,237         |                               |
| United Parcel Service          | 1,662              | 439                 | 45                 | 2,146         |                               |
| West Air                       | 295                | 31                  | 4                  | 330           |                               |
| World Airways                  | 292                | 31                  | 1                  | 324           |                               |
| Zantop Airways                 | 68                 | 6                   | -                  | 74            |                               |
| <b>SUBTOTAL - ALL AIRLINES</b> | <b>60,741</b>      | <b>5,457</b>        | <b>756</b>         | <b>66,954</b> | <b>(11.4)</b>                 |

(Continued)



Table IV.M (Continued)

**EMPLOYERS OF ACTIVE AIRMEN BY CLASS OF CERTIFICATE ISSUED\***  
**As of: December 31, 1997**

| <b>Employer</b>                                      | <b>First Class</b> | <b>Second Class</b> | <b>Third Class</b> | <b>Total</b>   | <b>Major Percent of Total</b> |
|--|--------------------|---------------------|--------------------|----------------|-------------------------------|
| Federal Aviation Administration (FAA)                | 419                | 4,534               | 157                | 5,110          | ( 0.9)                        |
| Government, other than Military or FAA, includes     |                    |                     |                    |                |                               |
| State and Local Government                           | 359                | 975                 | 220                | 1,554          | ( 0.3)                        |
| Aircraft Industry                                    | 336                | 432                 | 479                | 1,247          | ( 0.2)                        |
| Industry, other than Aircraft                        | 423                | 437                 | 470                | 1,330          | ( 0.2)                        |
| Fixed Base Operation (Flying schools, etc.)          | 3,045              | 4,483               | 131                | 7,659          | ( 1.3)                        |
| Self Employed  | 1,953              | 4,589               | 731                | 7,273          | ( 1.2)                        |
| Other  | 41,688             | 19,653              | 2,977              | 64,318         | ( 10.9)                       |
| Non-Aeronautical                                     | 34,240             | 101,624             | 285,660            | 421,524        | (71.6)                        |
| Air Force  | 3,599              | 2,480               | 467                | 6,546          | ( 1.1)                        |
| Army   | 363                | 1,263               | 207                | 1,833          | ( 0.3)                        |
| Coast Guard  | 128                | 103                 | 27                 | 258            | (0.0+)                        |
| Marines and Navy                                     | 1,441              | 1,383               | 297                | 3,121          | ( 0.5)                        |
| National Aeronautics and Space Administration (NASA) | 59                 | 83                  | 62                 | 204            | (0.0+)                        |
| <b>SUBTOTAL - ALL OTHERS</b>                         | <b>88,053</b>      | <b>142,039</b>      | <b>291,885</b>     | <b>521,977</b> | <b>(88.6)</b>                 |
| <b>TOTAL</b>   | <b>148,794</b>     | <b>147,496</b>      | <b>292,641</b>     | <b>588,931</b> | <b>(100.0)</b>                |

\* Totals are based on active airmen certified within the past 25 months. Employer data are provided by the airmen in Block 12 of FAA Form 8500-8. If blank or other than aeronautical employer is reflected, it is classified as "non-aeronautical".

Source: Civil Aeromedical Institute, Aeromedical Certification Division; RIS: AC 8500-1, Aeromedical Certification Statistical Handbook Computer Run.

**SECTION V****MEDICAL CHARACTERISTICS OF THE AIRMAN POPULATION**

This section presents medical characteristics of the active airman population (those airmen certified within the preceding 25 months) as of December 31, 1997, by class of medical certificate issued.

Table V.A

**ACTIVE AIRMEN BY NUMBER OF RESTRICTIONS CARRIED, CLASS AND SEX\***  
As of: December 31, 1997

| Number of<br>Restrictions | First Class   |              | Second Class  |              | Third Class    |               | Total Airmen   |               | Total<br>Airmen<br>Restrictions |
|---------------------------|---------------|--------------|---------------|--------------|----------------|---------------|----------------|---------------|---------------------------------|
|                           | Male          | Female       | Male          | Female       | Male           | Female        | Male           | Female        |                                 |
| 1                         | 60,032        | 2,236        | 80,261        | 3,712        | 154,707        | 11,465        | 295,000        | 17,413        | 312,413                         |
| 2                         | 1,176         | 15           | 2,377         | 50           | 10,386         | 192           | 13,939         | 257           | 14,196                          |
| 3                         | 25            | -            | 244           | 1            | 302            | 4             | 571            | 5             | 576                             |
| 4                         | -             | -            | 3             | -            | 7              | -             | 10             | -             | 10                              |
| 5                         | -             | -            | -             | -            | 2              | -             | 2              | -             | 2                               |
| 6                         | -             | -            | -             | -            | -              | -             | -              | -             | -                               |
| More than 6               | -             | -            | -             | -            | -              | -             | -              | -             | -                               |
| <b>Total Airmen</b>       | <b>61,233</b> | <b>2,251</b> | <b>82,885</b> | <b>3,763</b> | <b>165,404</b> | <b>11,661</b> | <b>309,522</b> | <b>17,675</b> | <b>327,197</b>                  |
|                           |               |              |               |              |                |               |                |               | <b>342,583</b>                  |

\* Figures are based on active airmen certified within the past 25 months.

Source: Civil Aeromedical Institute, Aeromedical Certification Division; RIS: AC 8500-1, Aeromedical Certification Statistical Handbook Run.

**FREQUENCY OF RESTRICTIONS AMONG ACTIVE AIRMEN BY CLASS AND SEX\***  
As of: December 31, 1997

| Restriction  | First Class |        | Second Class |        | Third Class |        | Total Airmen |        |
|--|-------------|--------|--------------|--------|-------------|--------|--------------|--------|
|  | Male        | Female | Male         | Female | Male        | Female | Male         | Female |
| Must Have Available Glasses For Near Vision                                  | 15,141      | 134    | 15,130       | 409    | 36,819      | 1,981  | 67,090       | 2,524  |
| Must Wear Corrective Lenses  | 35,974      | 1,886  | 46,896       | 2,565  | 86,061      | 6,967  | 168,931      | 11,418 |
| Must Wear Corrective Lenses for Near and Distant Vision                      | 2,712       | 85     | 8,144        | 299    | 18,167      | 1,215  | 29,023       | 1,599  |
| Must Wear Lenses for Distant/ Possess Glasses for Near Vision                | 3,996       | 113    | 9,715        | 419    | 20,086      | 1,376  | 33,797       | 1,908  |
| Must Wear Corrective Lenses/Possess Glasses for Near and Intermediate Vision | 1,194       | 13     | 1,340        | 38     | 438         | 24     | 2,972        | 75     |
| Holder Shall Possess Glasses for Near and Intermediate Vision                | 1,832       | 8      | 1,355        | 27     | 155         | 11     | 3,342        | 46     |
| Must Wear Prismatic Correction   | 16          | 1      | 28           | 4      | 57          | 2      | 101          | 7      |
| Must Wear Corrective Lenses: Extra Pair Must Be Available                    | 195         | 9      | 134          | 3      | 246         | 25     | 575          | 37     |
| Must Use Hearing Amplification   | 81          | 2      | 263          | 3      | 690         | 17     | 1,034        | 22     |
| Must Wear Artificial Limb  | 29          | -      | 57           | 1      | 139         | 3      | 225          | 4      |

(Continued)

Table V.B (Continued)

**FREQUENCY OF RESTRICTIONS AMONG ACTIVE AIRMEN BY CLASS AND SEX\***  
As of: December 31, 1997

| Restriction  | First Class |        | Second Class |        | Third Class |        | Total Airmen |        |
|--|-------------|--------|--------------|--------|-------------|--------|--------------|--------|
|  | Male        | Female | Male         | Female | Male        | Female | Male         | Female |
| Oxygen Required when Flying Above 7,999 Feet                         | 3           | -      | -            | -      | 4           | -      | 7            | -      |
| Passenger Carrying Prohibited  | 1           | -      | 1            | -      | 8           | 1      | 10           | 1      |
| Not Valid for Pilot in Command                                       | -           | -      | 3            | -      | 4           | -      | 7            | -      |
| Not Valid for Control Tower Operator Duties                          | 3           | -      | 4            | -      | 7           | -      | 14           | -      |
| Not Valid for Air Transport Duties                                   | -           | -      | 1            | 1      | -           | -      | 1            | 1      |
| Not Valid for Night Flying or By Color Signal Control (Color Vision) | 239         | -      | 793          | 3      | 5,266       | 23     | 6,298        | 26     |
| Not Valid for Night Flying (Glaucoma)                                | -           | -      | 5            | -      | 11          | 1      | 16           | 1      |
| Not Valid for Flying Where Radio Use is Required                     | 12          | -      | 32           | -      | 102         | 3      | 146          | 3      |
| Valid for Flight Service Station or Center Duties Only               | -           | -      | 2            | -      | 1           | -      | 3            | -      |
| Valid for Flight Test Only   | 4           | -      | 3            | -      | 2           | -      | 9            | -      |

(Continued)

Table V.B (Continued)

**FREQUENCY OF RESTRICTIONS AMONG ACTIVE AIRMEN BY CLASS AND SEX\***  
 As of: December 31, 1997

| Restriction  | First Class |        | Second Class |        | Third Class |        | Total Airmen |        |
|--|-------------|--------|--------------|--------|-------------|--------|--------------|--------|
|  | Male        | Female | Male         | Female | Male        | Female | Male         | Female |
| Second-Class Privileges Limited to Crop Dusting                  | -           | -      | 33           | -      | -           | -      | 33           | -      |
| Second-Class Privileges Limited to Flight Engineer Duties        | -           | -      | 65           | -      | -           | -      | 65           | -      |
| Second-Class Privileges Limited to Control Tower Operator Duties | -           | -      | 5            | 1      | -           | -      | 5            | 1      |
| Valid for and Limited to ATC Duties Only                         | -           | -      | 101          | 12     | 16          | 3      | 117          | 15     |
| Second-Class Privileges Limited to Flight Navigator Duties       | -           | -      | 2            | -      | -           | -      | 2            | -      |
| Valid for ATC Duties - Center Only                               | -           | -      | 7            | -      | 2           | 1      | 9            | 1      |
| Valid for Flight Service Station Duties Only                     | -           | -      | -            | -      | -           | -      | -            | -      |
| Limited to Military Controller Duties                            | -           | -      | 9            | 1      | 6           | 1      | 15           | 2      |
| Valid for Control Tower Duties When Second Controller on Duty    | 1           | -      | -            | -      | 1           | -      | 2            | -      |

(Continued)

Table V.B (Continued)

**FREQUENCY OF RESTRICTIONS AMONG ACTIVE AIRMEN BY CLASS AND SEX\***  
As of: December 31, 1997

| Restriction  | First Class   |              | Second Class  |              | Third Class    |               | Total Airmen   |               |
|--|---------------|--------------|---------------|--------------|----------------|---------------|----------------|---------------|
|  | Male          | Female       | Male          | Female       | Male           | Female        | Male           | Female        |
| Valid Only When Accompanied by Another Qualified Pilot | -             | -            | 1             | -            | 1              | -             | 2              | -             |
| Valid for Student Pilot Purposes Only                  | 22            | 1            | 79            | 3            | 878            | 66            | 979            | 70            |
| Second-Class Privileges Limited to Cargo Operations    | -             | -            | 1             | -            | -              | -             | 1              | -             |
| Time Limitation Restrictions                           | 675           | 5            | 1,045         | 13           | 6,512          | 114           | 8,232          | 132           |
| Special Issuance Restrictions                          | -             | -            | 1             | 1            | 8              | -             | 9              | 1             |
| Miscellaneous Restrictions                             | 308           | 8            | 477           | 9            | 680            | 24            | 1,465          | 41            |
| <b>TOTAL</b>   | <b>62,438</b> | <b>2,265</b> | <b>85,732</b> | <b>3,812</b> | <b>176,367</b> | <b>11,858</b> | <b>324,537</b> | <b>17,935</b> |

\* Figures are based on active airmen certified within the past 25 months; however, the restriction may have been assigned prior to the most recent examination. Airmen may have more than one restriction.

Source: Civil Aeromedical Institute, Aeromedical Certification Division; RIS: AC 8500-1, Aeromedical Certification Statistical Handbook Computer Run.

Table V.C

**ACTIVE AIRMEN WITH DEFECTIVE COLOR VISION BY CLASS AND SEX\***  
**As of: December 31, 1997**

| Class Issued | Frequency**   |              |           |              |
|--------------|---------------|--------------|-----------|--------------|
|              | Male          | Percent      | Female    | Percent      |
| First        | 2,149         | (1.5)        | 1         | (0.0+)       |
| Second       | 3,963         | (2.8)        | 12        | (0.2)        |
| Third        | 10,055        | (3.7)        | 40        | (0.2)        |
| <b>TOTAL</b> | <b>16,167</b> | <b>(2.9)</b> | <b>53</b> | <b>(0.2)</b> |

\* Figures are based on active airmen certified within the past 25 months and the assignment of the restriction "Not Valid for Night Flying or by Color Signal Control" or issuance of a waiver for deficient color vision.

\*\* Basis for percentages is the number of active airmen by sex within each class. Percent of total is computed using the total male or female population.

Source: Civil Aeromedical Institute, Aeromedical Certification Division; RIS: AC 8500-1, Aeromedical Certification Statistical Handbook Computer Run.



Table V.D

**ACTIVE AIRMEN WITH WAIVERS BY CLASS AND SEX\***  
As of: December 31, 1997

| Class Issued | Frequency**   |               |              |               |
|--------------|---------------|---------------|--------------|---------------|
|              | Male          | Percent       | Female       | Percent       |
| First        | 9,989         | ( 7.0)        | 492          | ( 7.9)        |
| Second       | 21,896        | (15.6)        | 955          | (13.9)        |
| Third        | 17,332        | ( 6.4)        | 507          | ( 2.5)        |
| <b>TOTAL</b> | <b>49,217</b> | <b>( 8.9)</b> | <b>1,954</b> | <b>( 6.0)</b> |

\* Figures are based on active airmen certified within the past 25 months; however, the waiver may have been issued prior to the most recent examination. Tabulations were based on an indication of a waiver in the class issued code or the presence of a waiver number.

\*\* Basis for percentages is the number of active airmen by sex within each class. Percent of total is computed using the total male or female population.

Source: Civil Aeromedical Institute, Aeromedical Certification Division; RIS: AC 8500-1, Aeromedical Certification Statistical Handbook Computer Run.