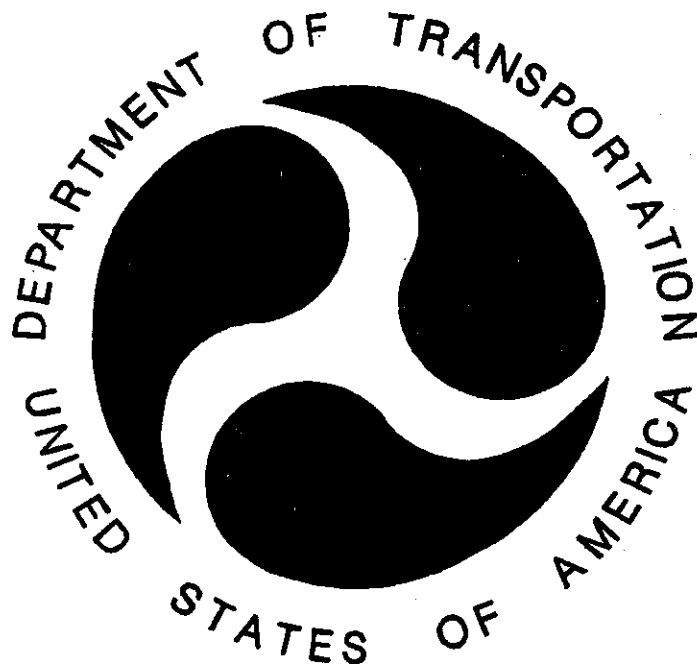


1998

AEROMEDICAL CERTIFICATION

STATISTICAL HANDBOOK



U.S. DEPARTMENT OF TRANSPORTATION

FEDERAL AVIATION ADMINISTRATION

CIVIL AEROMEDICAL INSTITUTE

AEROMEDICAL CERTIFICATION DIVISION

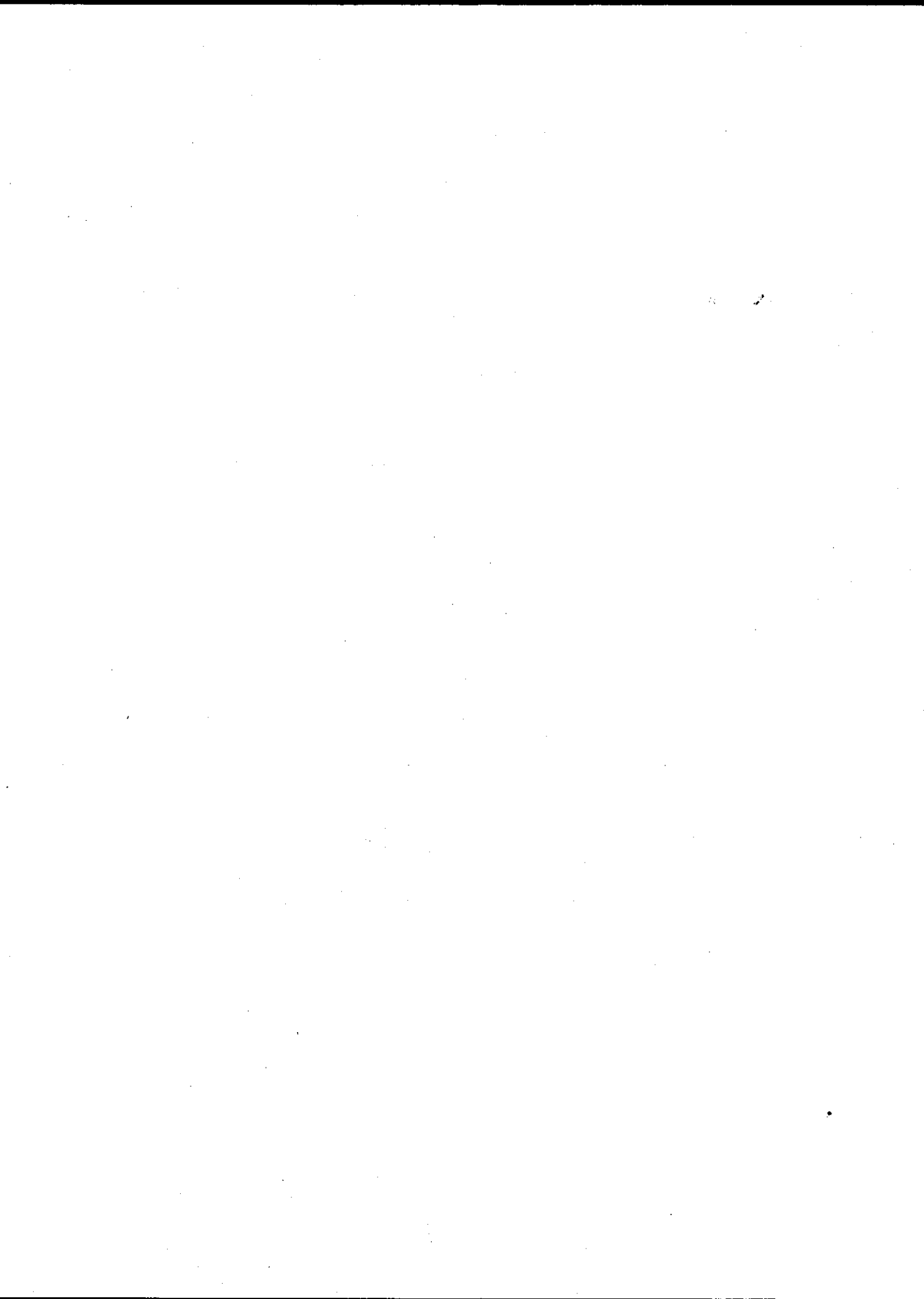


Table of Contents

<u>Section</u>	<u>Page</u>
I. AVIATION MEDICAL EXAMINER INFORMATION	1
A. Designated FAA Aviation Medical Examiners by Region	2
B. Medical Practice of Aviation Medical Examiners (Chart)	3
C. Regional Coverage of Aviation Medical Examiners Versus Civil Airmen	4
D. Aviation Medical Examiner Seminars - Date, Location and Attendance	5
E. Aviation Medical Examiner Seminars and Attendance	6
F. Regional Aviation Medical Examiner Activity	7
G. Aviation Medical Examiner Summary Data	8
II. CERTIFICATION ACTIVITY	9
A. Airman Applications for Medical Certification (Chart)	10
B. Receipts of Medical Certificate Applications by Class	11
C. Medical Applications Processing by the Aeromedical Certification Division	12
D. Aeromedical Certification Division Correspondence Activity	13
E. Aeromedical Certification Division Computer Tape File Summary	14
F. Medical Certification Activity Summary	15
III. REFERRALS AND DENIALS	17
A. Distribution of Causes for Review by Major Category	18
B. Distribution of Causes for Review by Major and Minor Categories	19
C. Special Issuances and Denials (Table)	20

Table of Contents (Continued)

<u>Section</u>	<u>Page</u>
IV. GENERAL AIRMAN POPULATION DATA	21
A. Regional Distribution of Active Airmen by Class of Certificate and Effective Status	22
B. Active Airmen's State of Residence by Sex and Class of Certificate Issued	23
C. Age Distribution of Medically Certified Airmen (Chart)	25
D. Age Distribution of Medically Certified First-Class Airmen (Chart)	26
E. Age Distribution of Medically Certified Second-Class Airmen (Chart)	27
F. Age Distribution of Medically Certified Third-Class Airmen (Chart)	28
G. Age Distribution of Active Airmen by Class and Sex (Table)	29
H. Age Distribution of Airline Pilots (Chart)	30
I. Age Distribution of Airline Pilots (Table)	31
J. Height Distribution of Active Airmen by Class and Sex	32
K. Weight Distribution of Active Airmen by Class and Sex	33
L. Active Airmen by Occupation, Class and Sex	34
M. Employers of Active Airmen by Class of Certificate Issued	35
V. MEDICAL CHARACTERISTICS OF THE AIRMAN POPULATION	37
A. Active Airmen by Number of Restrictions Carried, Class and Sex	38
B. Frequency of Restrictions Among Active Airmen by Class and Sex	39
C. Active Airmen with Defective Color Vision by Class and Sex	43
D. Active Airmen with Waivers by Class and Sex	44

SYMBOLS

Category not applicable	N/A
Data not available	---
Quantity zero	-
Quantity more than 0 but less than 0.05	0.0
More than	>
Less than	<

FOR ADDITIONAL INFORMATION ON DATA PRESENTED, please refer to the footnotes provided on the table or chart, or contact the office indicated in the source note.



SECTION I

AVIATION MEDICAL EXAMINER INFORMATION

This section reflects the activities of the Aviation Medical Examiner Program during calendar year 1998 with some comparative data for previous years.

An Aviation Medical Examiner (AME) is a physician authorized by the Federal Aviation Administration (FAA) to perform airman physical examinations for issuance of FAA medical certificates. These physicians are designated according to the geographical distribution of airmen. There are also military facilities (installations) designated to perform FAA airman examinations of military personnel for issuance of second- and third-class certificates.

AME seminars are held in each region and at Oklahoma City's Civil Aeromedical Institute to acquaint these physicians with the regulations and procedures governing the issuance of FAA medical certificates.

Table I.A

DESIGNATED FAA AVIATION MEDICAL EXAMINERS BY REGIONS

1997 - 1998

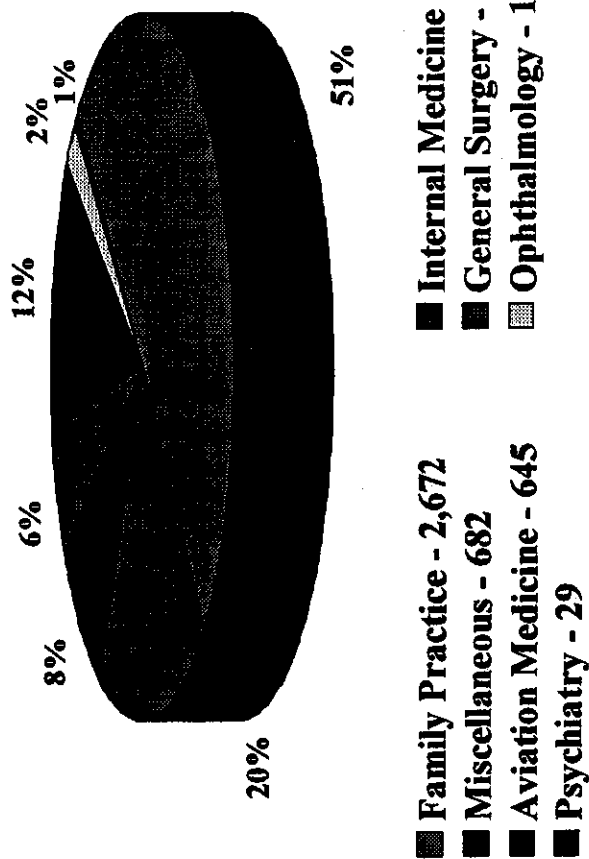
REGION	PERCENT OF 1998 TOTAL*	AVIATION MEDICAL EXAMINERS	
		1998	1997
Alaskan	1.6	89	92
Central	5.7	311	336
Eastern	11.4	627	693
Great Lakes	14.7	813	853
New England	3.2	178	187
Northwest Mountain	9.2	510	560
Southern	18.1	996	1,075
Southwest	13.0	717	730
Western Pacific	8.1	447	458
SUBTOTAL	85.0	4,688	4,984
Military	7.7	424	485
International	7.3	402	414
TOTAL	100.0	5,514	5,883

* The basis for percentage computations is total designations as of the end of calendar year 1998.

Source: Civil Aeromedical Institute, Aeromedical Education Division, Aviation Medical Examiner Program; RIS: AC 8520-2, AME Worklist by State (designated FAA Aviation Medical Examiners by Region and State).

FIGURE I.B
MEDICAL PRACTICE OF AVIATION MEDICAL EXAMINERS
 As of: January 29, 1999*

TOTAL 5,514



* Based on United States, International, and Military Aviation Medical Examiners.
 Computer Run dated January 29, 1999.

Source: Civil Aeromedical Institute, Aeromedical Education Division, Aviation Medical Examiner Program; RJS:
 AC 8520-5, AME Specialty Summary by State.

Table I.C

**REGIONAL COVERAGE OF AVIATION MEDICAL EXAMINERS
VERSUS CIVIL AIRMEN
1998**

REGION	Active U.S. Civil Airman Population *	U.S. Non-Military AME Population **	Ratio AMEs To Airmen
Alaskan	8,545	89	1:96
Central	28,825	311	1:93
Eastern	70,635	627	1:113
Great Lakes	96,518	813	1:119
New England	25,504	178	1:143
Northwest Mountain	59,760	510	1:117
Southern	111,583	996	1:112
Southwest	67,755	717	1:94
Western Pacific	92,898	447	1:208
TOTAL	562,023	4,688	1:120

* Active U.S. Civil Airman Population figures are as of December 31, 1998; RIS: AC 8065-4, Examination Time Period Summary. Military and International not included.

** U.S. Non-Military AME Population figures are as of January 29, 1999; RIS: AC 8520-2, AME Worklist by State (Designated FAA Aviation Medical Examiners by Region and State). Military and International not included.

Source: Civil Aeromedical Institute, Aeromedical Education Division, Aviation Medical Examiner Program; and Aeromedical Certification Division.

Table I.D

**AVIATION MEDICAL EXAMINER SEMINARS
DATE, LOCATION AND ATTENDANCE
1998**

DATE	LOCATION	ATTENDANCE
February 20 – 22	Los Angeles, California	113
March 16 – 20	Oklahoma City, Oklahoma	71
April 17 – 19	Washington, D.C.	205
May 17 – 21	Seattle, Washington	142
June 15 – 19	Oklahoma City, Oklahoma	56
July 17 – 19	Denver, Colorado	181
August 24 – 28	Oklahoma City, Oklahoma	70
October 26 – 31	Oklahoma City, Oklahoma	65
December 11 – 13	New Orleans, Louisiana	169
TOTAL		1,072

Source: Civil Aeromedical Institute, Aeromedical Education Division, Aviation Medical Examiner Program.

Table I.E
AVIATION MEDICAL EXAMINER SEMINARS AND ATTENDANCE
1960-1998

DATE	SEMINARS	ATTENDANCE
1960	1	49
1961	16	1,031
1962	24	1,431
1963	13	1,153
1964	9	1,406
1965	10	1,596
1966	7	1,187
1967	11	1,281
1968	5	545
1969	7	970
1970	5	750
1971	10	1,521
1972	5	873
1973	4	806
1974	8	1,498
1975	13	1,633
1976	15	1,871
1977	12	1,309
1978	14	1,439
1979	16	1,733
1980	15	2,012
1981	13	1,477
1982	15	1,652
1983	17	1,523
1984	17	1,551
1985	15	2,033
1986	11	1,701
1987	13	1,573
1988	17	1,525
1989	16	1,550
1990	15	1,599
1991	15	1,472
1992	17	1,507
1993	15	1,418
1994	16	1,531
1995	13	1,406
1996	12	1,543
1997	11	1,718
1998	9	1,072
TOTAL	477	53,945

Source: Civil Aeromedical Institute, Aeromedical Education Division, Aviation Medical Examiner Program.

Table I.F

**REGIONAL AVIATION MEDICAL EXAMINER ACTIVITY
1998**

REGION	AMEs Appointed	AMEs Reinstated	AMEs Separated	Total AMEs
Alaskan	2	1	5	89
Central	16	5	39	311
Eastern	37	5	103	627
Great Lakes	45	10	96	813
New England	8	3	14	178
Northwest Mountain	23	9	86	510
Southern	43	11	122	996
Southwest	42	5	56	717
Western Pacific	30	3	40	447
International	13	1	25	402
Military	63	7	113	424
TOTAL	322	60	699	5,514

Source: Civil Aeromedical Institute, Aeromedical Education Division, Aviation Medical Examiners Program.

Table I.G

AVIATION MEDICAL EXAMINER SUMMARY DATA *
1998

A.	Number of Designated U.S. Non-Military Aviation Medical Examiners	5,090
B.	Number of Designated International Aviation Medical Examiners	402
C.	Number of Designated Military Aviation Medical Examiners	424
D.	Ratio of U.S. Non-Military Aviation Medical Examiners to U.S. Civil Airmen	1:120
E.	Percentage of Non-Military Aviation Medical Examiners Who Are Qualified Pilots	50.1
F.	Number of Non-Military Aviation Medical Examiners Who Participate in Accident Investigation	106
G.	Total Number of Seminars Conducted in 1998	9
H.	Total Attendance of Aviation Medical Examiners at Seminars	1,072

* An Aviation Medical Examiner may have been classified in more than one of these categories.

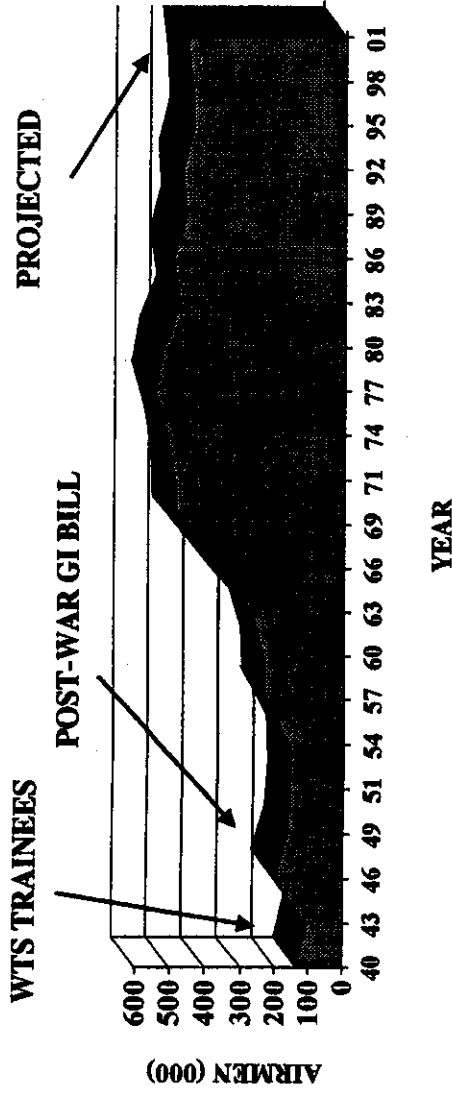
Source: Civil Aeromedical Institute, Aeromedical Education Division, Aviation Medical Examiner Program.

SECTION II**CERTIFICATION ACTIVITY**

The Aeromedical Certification Division is the central screening facility and repository within the Federal Aviation Administration for collection, investigation, adjudication, and analysis of medical data.

Activities of the Aeromedical Certification Division are presented in this section. Data are presented by calendar year and reflect workload in the certification area.

FIGURE II.A
AIRMAN APPLICATIONS FOR MEDICAL CERTIFICATION
1940 - 1998 Projected to 2001



Year	1940	1941	1942	1943	1944	1945	1946	1947	1948	1949	1950	1951	1952	1953	1954	1955
Applications	134.4	172.2	161.6	102.7	113.8	154.6	202.1	289.6	233.4	162.5	144	157.4	145.7	133.5	160.6	168.6
Percentage*	83.5%	28.1%	-6.2%	-36.4%	10.8%	35.9%	30.7%	43.3%	-19.4%	-30.4%	-11.4%	9.3%	-7.4%	-8.4%	20.3%	5.0%
Year	1956	1957	1958	1959	1960	1961	1962	1963	1964	1965	1966	1967	1968	1969	1968	1969
Applications	181.7	229.6	217.9	255.6	237.5	237.3	254.1	271.8	294.7	330.6	387.5	427.6	465.9	487.7	487.7	493.1
Percentage*	7.8%	26.4%	-5.1%	17.3%	-7.1%	-0.1%	7.1%	8.4%	12.2%	17.2%	17.2%	10.3%	9.0%	4.7%	0.0%	1.1%
Year	1972	1973	1974	1975	1976	1977	1978	1979	1980	1981	1982	1983	1984	1985	1986	1987
Applications	494.7	521.7	515.4	519.2	542.1	550.2	565.5	550.2	529.1	529.4	463.2	477.9	463.6	479.8	499.0	470.2
Percentage*	0.3%	5.5%	-1.2%	0.7%	4.4%	1.5%	2.8%	-2.7%	-3.8%	0.1%	-12.5%	3.2%	-3.0%	3.5%	4.0%	-5.8%
Year	1988	1989	1990	1991	1992	1993	1994	1995	1996	1997	1998	1999	2000	2001	2002	2003
Applications	466.3	481.2	480.9	494.6	473.9	456.0	452.9	441.8	446.2	447.9	450.6	455.1	459.7	464.2	464.2	464.2
Percentage*	-0.8%	3.2%	-0.1%	2.8%	-4.2%	-3.8%	-0.7%	-2.5%	1.0%	.4%	.6%	1.0%	1.0%	1.0%	1.0%	1.0%

*Percentage of increase or decrease over previous year. Projected receipts based on 1% increase each calendar year.
 Source: Civil Aeromedical Institute, Aeromedical Certification Division.

Table II.B
RECEIPTS OF MEDICAL CERTIFICATE APPLICATIONS BY CLASS *
 1965-1998

Calendar Year	Total	First Class	Percent of Total	Second Class	Percent of Total	Third Class	Percent of Total
1965	330,617	52,006	15.7	109,600	33.2	169,011	51.1
1966	387,537	73,903	19.1	124,593	32.1	189,041	48.8
1967	427,596	80,474	18.8	143,458	33.5	203,664	47.6
1968	465,929	87,408	18.8	173,139	37.2	205,382	44.1
1969	478,700	90,666	18.9	178,699	37.3	209,335	43.7
1970	487,700	94,419	19.4	189,276	38.8	204,005	41.8
1971	493,145	91,478	18.5	204,853	41.5	196,814	39.9
1972	494,700	86,573	17.5	205,597	41.6	202,530	40.9
1973	521,700	93,384	17.9	220,679	42.3	207,637	39.8
1974	515,400	91,741	17.8	214,922	41.7	208,737	40.5
1975	519,200	91,379	17.6	224,814	43.3	203,007	39.1
1976	542,159	93,793	17.3	230,418	42.5	217,948	40.2
1977	550,243	97,393	17.7	230,552	41.9	222,298	40.4
1978	565,534	105,755	18.7	228,476	40.4	231,303	40.9
1979	550,188	111,138	20.2	212,373	38.6	226,677	41.2
1980	529,051	118,507	22.4	197,865	37.4	212,679	40.2
1981	529,418	128,649	24.3	183,708	34.7	217,061	41.0
1982	463,241	110,714	23.9	155,186	33.5	197,341	42.6
1983	477,905	114,219	23.9	171,090	35.8	192,596	40.3
1984	463,617	109,877	23.7	159,948	34.5	193,792	41.8
1985	479,849	126,680	26.4	154,511	32.2	198,658	41.4
1986	474,392	133,304	28.1	146,113	30.8	194,975	41.1
1987	470,208	147,175	31.3	138,241	29.4	184,792	39.3
1988	466,326	147,359	31.6	130,571	28.0	188,396	40.4
1989	481,168	162,635	33.8	128,953	26.8	189,580	39.4
1990	480,922	169,765	35.3	124,559	25.9	186,598	38.8
1991	494,612	181,523	36.7	127,115	25.7	185,974	37.6
1992	473,884	177,233	37.4	121,788	25.7	174,863	36.9
1993	455,995	170,086	37.3	118,559	26.0	167,350	36.7
1994	452,920	170,298	37.6	115,042	25.4	167,580	37.0
1995	441,827	174,522	39.5	110,456	25.0	156,849	35.5
1996	443,660	183,232	41.3	104,704	23.6	155,724	35.1
1997	447,937	185,894	41.5	100,786	22.5	161,257	36.0
1998	450,612	194,664	43.2	98,684	21.9	157,264	34.9

* The 1965 class distributions were achieved by applying percentages based on card counts of applications performed during 1965 to the total receipts for the year. Class distributions for 1966 through 1998 were based on percentages compiled from the Record of Physical Examinations Computer Submission Summary, AC 8500-3.

Source: Civil Aeromedical Institute, Aeromedical Certification Division; RIS: AC 8500-3, Record of Physical Examinations Computer Submission Summary Report.

Table II.C

**MEDICAL APPLICATIONS PROCESSING BY THE
AEROMEDICAL CERTIFICATION DIVISION
1998**

Month	Applications Received	Applications Coded for Computer Screening	Applications Screened by Computer *	Applications Requiring Manual Review **	Applications Intra-Office Transmitted ***
January	33,656	22,281	21,481	14,469	139
February	32,683	21,141	21,941	12,685	140
March	38,334	24,843	24,243	16,414	166
April	39,932	27,279	27,879	18,974	83
May	35,707	21,541	21,341	15,081	138
June	40,884	27,120	26,320	19,938	162
SUBTOTAL	221,196	144,205	143,205	97,561	828
July	40,850	27,323	28,023	15,754	144
August	39,733	24,548	24,648	17,483	123
September	38,410	23,942	24,842	14,729	130
October	40,294	26,038	25,938	17,082	177
November	35,623	22,034	21,634	17,270	234
December	34,506	20,760	20,860	14,634	91
SUBTOTAL	229,416	144,645	145,945	96,952	899
TOTAL	450,612	288,850	289,150	194,513	1,727

* Figures reflect the number of submissions to the computer rather than the number of applications because an application may have to be submitted to the computer more than once before it is accepted.

** Total applications rejected for any reason is presently 55% of applications screened by computer.

*** Figures include applications transmitted to the regions and to the Federal Air Surgeon for certification or review. Represents 0.4% of the applications received.

Source: Civil Aeromedical Institute, Aeromedical Certification Division; RIS: AC 8065-3, Aeromedical Certification Processing Summary.

Table II.D
AEROMEDICAL CERTIFICATION DIVISION
CORRESPONDENCE ACTIVITY
1998

Activity	Frequency	Subtotal	Percent of Total
Certification			
Issued and Corrected Certificates	18,974		
Eligibility Letters	63,905		
Issued or Duplicate Waivers	2,079		
		84,958	59.7
Further Action Necessary			
Information Requested	33,537		
Medical Flight Test Authorization	3,507		
		37,044	26.0
Telegram Replies to Airmen/Agency Offices			
	2,202	2,202	1.6
Denial Letters			
Final Denials	171		
General Denials	1,777		
Failure to Provide Denials	2,507		
Other Denial Correspondence	4,548		
		9,003	6.3
Miscellaneous Correspondence*			
AME Error Letters	396		
Other Miscellaneous*	8,771		
		9,167	6.4
TOTAL		142,374	100.0

* Includes refund letters, charge letters, second request letters, requests for return of medical certificate, cover letters, replies to airmen and physicians inquiries, and other miscellaneous letters.

Source: Civil Aeromedical Institute, Aeromedical Certification Division; RIS: AC 8065-3, Aeromedical Certification Processing Summary.

Table II.E

**CONSOLIDATED
AEROMEDICAL CERTIFICATION DIVISION COMPUTER TAPE FILE SUMMARY
As of: December 31, 1998**

Action	Time Lapse Since Date of Last Examination					Total
	< 7 Months	< 13 Months	< 25 Months	Subtotal	2.5-36 Months	
<u>Certified</u>						
First Class	103,257	33,025	18,940	155,222	10,849	N/A
Second Class	53,376	45,276	48,471	147,123	22,898	N/A
Third Class	84,737	74,605	144,620	303,962	67,103	N/A
SUBTOTAL	241,370	152,906	212,031	606,307	100,850	N/A
<u>Non-Certified</u>						
Pending	3,809	1,406	2,291	7,506	1,808	N/A
Denied	1,673	1,872	3,413	6,958	3,059	N/A
SUBTOTAL	5,482	3,278	5,704	14,464	4,867	N/A
<u>Link*</u>	N/A	N/A	N/A	N/A	N/A	612,809
TOTAL	246,852	156,184	217,735	620,771	105,717	726,488
EFFECTIVE STATUS TOTAL		Class I = 103,257		Class II = 131,677		Class III = 371,373

* Abbreviated records maintained on individuals having significant pathology who have not had a physical examination in the past 36 months. These airmen may or may not have been certified.

Source: Civil Aeromedical Institute, Aeromedical Certification Division.

Table II.F

**MEDICAL CERTIFICATION ACTIVITY SUMMARY
1996-1998**

Activity	CY 1998	CY 1997	CY 1996
Applications for Medical Certification	450,612	447,937	443,660
First-Class Combined Student/Medical Certificates	6,987	6,078	5,306
Second-Class Combined Student/Medical Certificates	11,528	10,773	10,164
Third-Class Combined Student/Medical Certificates	71,811	68,946	69,085
Electrocardiograms Received for First-Class Pilots	76,168	77,639	75,302
Incoming Correspondence*	87,162	88,470	74,619
Outgoing Correspondence	142,374	117,101	112,315
Applications Containing Medical or Clerical Problems	194,513	175,606	207,309
Number of First-Class Active Airmen with Pathology Records	39,100	36,914	36,144
Number of Second-Class Active Airmen with Pathology Records	49,584	48,983	50,560
Number of Third-Class Active Airmen with Pathology Records	93,391	84,489	83,299

* Includes information requested by the Aeromedical Certification Division and inquiries from airmen or regional offices.

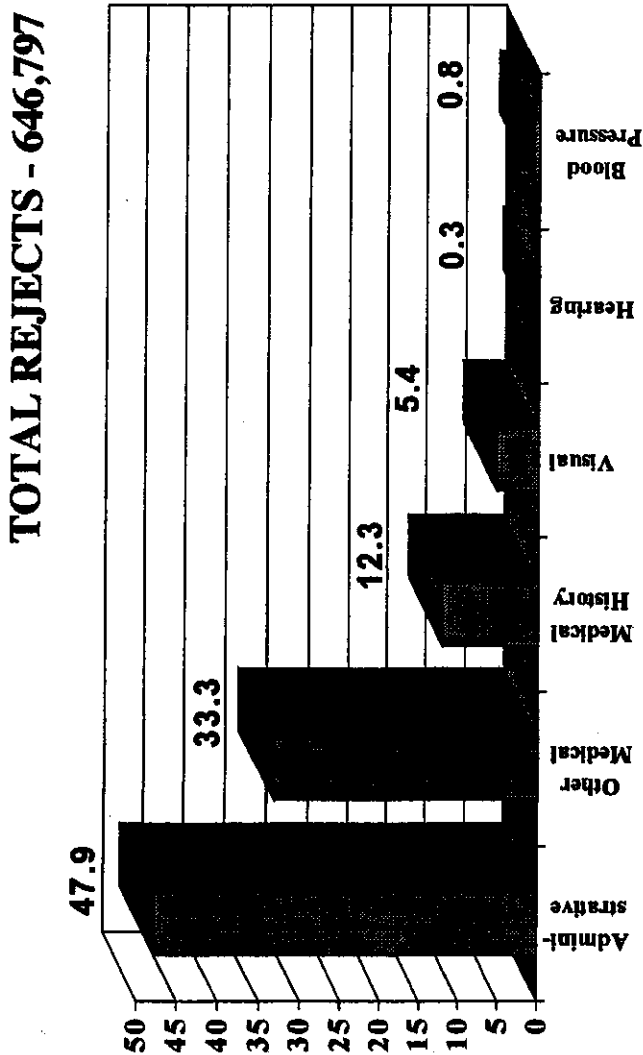
Source: Civil Aeromedical Institute, Aeromedical Certification Division; RIS: AC 8500-1, 8500-3, and 8065-3.



SECTION III**REFERRALS AND DENIALS**

This section concerns those applications for medical certification which require manual review. These data are presented by calendar year and reflect the number of rejects, either medical or administrative, generated when the application enters the automated system. Also included are data reflecting the number of special issuances and denials.

FIGURE III.A
DISTRIBUTION OF CAUSES FOR REVIEW
BY MAJOR CATEGORY
1998



Source: Civil Aeromedical Institute, Aeromedical Certification Division; RIS: AC 8500-3, Aeromedical Certification Processing Summary.

Table III.B

**DISTRIBUTION OF CAUSES FOR REVIEW BY MAJOR AND MINOR CATEGORIES
1998**

Reject	Major Category Totals	Percent	Minor Categories	Percent
<u>Administrative</u>	309,937	47.9		
AME Number Rejects			7,369	1.1
No Ticket Flag Set			84,166	13.0
Previous Exam Has No Ticket Flag			7,119	1.1
Clerical Reject			4,508	0.7
Waiver Rejects			1,786	0.3
Re-Submit Exam to Computer			2,305	0.4
Date of ECG Rejects			10,205	1.6
No Match Between New and Previous Exams			1,533	0.2
Discrepancy in Name/DOB			25,031	3.9
Discrepancy in Social Security Number			9,722	1.5
Other*			156,193	24.1
<u>Visual</u>	34,759	5.4		
Distant Vision			11,435	1.8
Near Vision			12,496	1.9
Field of Vision			645	0.1
Color Vision			10,183	1.6
<u>Other Medical Conditions</u>	216,058	33.3		
Current Exam Pending			16,520	2.5
Urinalysis			3,625	0.6
Pathology Codes			94,242	14.5
Abnormalities (Items 25-48)			5,112	0.8
Medication			76,621	11.8
Restrictions			19,938	3.1
<u>Medical History</u>	79,450	12.3		
Previous Exam Special Case			125	0.0+
Medical History			50,769	7.9
Previous Exam Pending			2,846	0.4
Previous Exam Medical Appeals Case/Denied			5,174	0.8
Input Exam Medical Appeals Case/Denied			1,544	0.2
Follow-up Material Requested			15,033	2.3
Current Information with Previous Record			1,146	0.2
Previous Exam Sent to Washington or Region/ECG Pending			364	0.1
Follow-up Not Required This Exam			2,449	0.4
<u>Hearing</u>	1,648	0.3		
Hearing			1,648	0.3
<u>Blood Pressure</u>	4,945	0.8		
Blood Pressure			4,945	0.8
TOTAL REJECT MESSAGES	646,797	100.0		

* Rejects resulting from validity checks against established edit criteria for height, weight, and address; rejects for certificates not issued due to class, no ticket flag, or bad address; and pathology number assigned rejects.

Source: Civil Aeromedical Institute, Aeromedical Certification Division; RIS: AC 8065-3, Aeromedical Certification Processing Summary.

Table III.C

AUTHORIZATIONS FOR SPECIAL ISSUANCE AND DENIALS*
As of: December 31, 1998

Category Issuance/Denial	First Class	Second Class	Third Class	Total
<u>Issuances</u>				
NTSB Issuance	5	5	3	13
Authorizations by AAM-300	1,077	669	5,804	7,550
Authorizations by AAM-1	273	87	139	499
Authorizations by RFS	4	23	100	127
Total Authorizations for Special Issuance	1,359	784	6,046	8,189
<u>Final Denials</u>				
Final Denials by AAM-300	83	107	566	756
Final Denials by AAM-1	5	2	8	15
Final Denials by RFS	-	2	3	5
Total Final Denials	88	111	577	776

* Figures include those cases coded under authorizations for special issuance or denials on active master file.

Source: Civil Aeromedical Institute, Aeromedical Certification Division; RIS: AC 8065-1, Pathology Code Summary.

SECTION IV**GENERAL AIRMAN POPULATION DATA**

This section reflects general data concerning the active airman population.* The data presented are as of December 31, 1998, and cover the preceding 25 months. The 25-month time period was used to describe the active airman population because a medically certified airman is considered "active" for a maximum of 25 months after his/her last FAA physical examination, i.e., regardless of the class of medical certificate issued, it is valid for third-class purposes for a period of time up to 25 months. Those airmen who have allowed their medical certification to lapse into a time period greater than 25 months would be considered "inactive" airmen.

Data are presented by class of medical certificate issued and do not include applications pending or denied. Table IV.A presents data by "effective status" of medical certification. This refers to the time lapse since the certificate was issued as opposed to the class issued. Present FAA regulations stipulate that air transport pilots must be first-class medically certified at six-month intervals, commercial pilots must be second-class medically certified annually, and general aviation airmen must obtain third-class medical certification every two years. Thus, an airman may be first- or second-class medically certified and the time lapse since examination would reduce the "effective status" to a lower class.

*On September 16, 1996, the "effective status" of medical certificates for some third-class applicants was revised. Data are not yet available.

Table IV.A
REGIONAL DISTRIBUTION OF ACTIVE AIRMEN BY CLASS OF CERTIFICATE AND EFFECTIVE STATUS*
As of: December 31, 1998

Region	First Class			Second Class			Third Class			Total Active Airmen			
	First Class Certified	Effective Status (Class)**		Second Class Certified	Effective Status (Class)**		Third Class Certified	Effective Status (Class)**		Total Airmen Certified	Percent of Total Airmen		
		1	2		3	2		3	1		2	3	
Alaskan	1,602	369	125	2,648	1,815	833	4,295	4,295	8,545	1.4	1,108	2,184	5,253
Central	4,447	895	440	7,230	4,994	2,236	17,148	17,148	28,825	4.8	3,112	5,889	19,824
Eastern	15,744	3,188	1,500	16,368	10,846	5,322	38,523	38,523	70,635	11.7	11,056	14,034	45,545
Great Lakes	20,780	4,395	2,120	20,713	13,971	6,742	55,025	55,025	96,518	15.9	14,265	18,366	63,887
New England	5,854	1,152	580	6,019	3,860	2,159	13,631	13,631	25,504	4.2	4,122	5,012	16,370
Northwest-Mountain	14,515	4,122	1,472	14,555	9,905	4,650	30,690	30,690	59,760	9.7	10,095	12,853	36,812
Southern	32,213	22,347	3,202	26,953	18,394	8,559	52,417	52,417	111,583	18.4	22,347	25,058	64,178
Southwest	17,197	3,523	1,683	18,558	13,080	5,558	32,000	32,000	67,755	11.2	11,991	16,523	39,241
Western-Pacific	21,086	4,526	2,526	22,245	14,875	7,370	49,567	49,567	92,898	15.4	14,034	19,401	59,463
U.S. TOTAL	133,438	27,660	13,648	135,289	91,660	43,629	293,296	293,296	562,023	92.7	92,130	119,320	350,573
Military International	5,924	1,333	906	5,261	3,186	2,075	1,357	1,357	12,542	2.1	3,685	4,519	4,338
	15,860	4,032	4,386	6,573	3,806	2,767	9,309	9,309	31,742	5.2	7,442	7,838	16,462
TOTAL	155,222	33,025	18,940	147,123	98,652	48,471	303,962	303,962	606,307	100.0	103,257	131,677	371,373
Percent of Total Certified Airmen	(25.6)			(24.3)			(50.1)		(100.0)				

* Figures are based on a 25-month summary from the computer tape files; only certified airmen are included.

** Refers to the time lapse since the certificate was issued as opposed to the class issued. Present FAA regulations stipulate that air transport pilots must be first-class medically certified at six-month intervals, commercial pilots must be second-class medically certified annually, and general aviation airmen must obtain third-class medical certification every two years. Thus, an airman may be first- or second-class medically certified and the time lapse since examination would reduce the "effective status" to a lesser class.

Source: Civil Aeromedical Institute, Aeromedical Certification Division; RIS: AC 8065-4, Examination Time Period Summary.

Table IV.B

**ACTIVE AIRMEN'S STATE OF RESIDENCE
BY SEX AND CLASS OF CERTIFICATE ISSUED***
As of: December 31, 1998

State	First Class		Second Class		Third Class		Total Airmen	
	Male	Female	Male	Female	Male	Female	Male	Female
Alabama	878	19	2,140	55	3,826	198	6,844	272
Alaska	1,598	91	2,517	156	3,919	342	8,034	589
Arizona	4,756	252	3,518	206	6,802	611	15,076	1,069
Arkansas	619	27	1,534	31	2,596	164	4,749	222
California	13,143	756	15,329	893	34,942	2,932	63,414	4,581
Colorado	4,979	355	3,268	210	6,023	518	14,270	1,083
Connecticut	1,813	98	1,516	65	2,889	208	6,218	371
Delaware	326	15	354	18	628	38	1,308	71
District of Columbia	81	9	85	10	210	31	376	50
Florida	13,781	571	10,509	509	16,599	1,284	40,889	2,364
Georgia	6,142	157	3,064	123	6,618	421	15,824	701
Hawaii	1,023	61	774	43	513	52	2,310	156
Idaho	594	23	1,019	42	2,153	152	3,766	217
Illinois	4,851	336	4,212	244	9,813	636	18,876	1,216
Indiana	1,989	124	2,140	91	6,166	362	10,295	577
Iowa	612	27	1,368	48	3,676	177	5,656	252
Kansas	1,088	36	2,270	101	4,549	287	7,907	424
Kentucky	2,003	80	1,200	44	2,746	167	5,949	291
Louisiana	1,040	29	1,917	51	2,560	131	5,517	211
Maine	482	21	625	35	1,595	86	2,702	142
Maryland	1,592	83	1,784	73	4,059	327	7,435	483
Massachusetts	1,555	91	2,028	141	5,043	392	8,626	624
Michigan	2,828	166	3,501	189	9,903	671	16,232	1,026
Minnesota	4,117	271	2,552	141	6,908	419	13,577	831
Mississippi	631	26	1,200	17	1,753	99	3,584	142
Missouri	2,234	81	2,257	105	5,687	387	10,178	573
Montana	373	17	978	34	1,731	123	3,082	174
Nebraska	503	19	996	30	2,232	100	3,731	149
Nevada	1,711	66	1,318	54	2,321	251	5,350	371
New Hampshire	1,311	57	887	61	1,549	126	3,747	244
New Jersey	2,438	111	2,284	112	5,723	397	10,445	620
New Mexico	737	29	1,004	65	1,956	172	3,697	266
New York	3,273	153	3,775	195	9,114	637	16,162	985
North Carolina	3,215	135	3,021	112	6,680	427	12,916	674
North Dakota	450	49	674	25	1,058	52	2,182	126
Ohio	3,487	169	3,610	190	9,390	687	16,487	1,046
Oklahoma	1,527	57	2,605	110	4,009	298	8,141	465
Oregon	1,017	68	2,057	137	5,399	434	8,473	639
Pennsylvania	3,991	192	3,613	186	8,185	560	15,789	938
Rhode Island	243	13	280	14	636	48	1,159	75
South Carolina	1,203	45	1,420	55	3,137	182	5,760	282
South Dakota	254	9	609	23	1,081	47	1,944	79
Tennessee	2,608	100	2,265	101	4,337	261	9,210	462
Texas	13,778	477	10,929	490	18,518	1,359	43,225	2,326

(Continued)

Table IV.B (Continued)

**ACTIVE AIRMEN'S STATE OF RESIDENCE
BY SEX AND CLASS OF CERTIFICATE ISSUED***
As of: December 31, 1998

State	First Class		Second Class		Third Class		Total Airmen	
	Male	Female	Male	Female	Male	Female	Male	Female
Utah	1,677	58	1,290	70	2,361	129	5,328	257
Vermont	265	23	289	21	758	60	1,312	104
Virginia	3,813	175	3,116	156	5,622	419	12,551	750
Washington	5,176	279	4,381	290	8,879	777	18,436	1,346
West Virginia	241	9	494	16	976	45	1,711	70
Wisconsin	1,782	83	1,987	100	6,190	427	9,959	610
Wyoming	234	11	379	17	914	63	1,527	91
SUBTOTAL	130,062	6,209	126,942	6,305	264,932	19,173	521,936	31,687
NASA	11	1	2,216	54	1,164	113	3,391	168
Military	2,138	105	4,183	255	7,823	667	14,144	1,027
International	16,290	406	6,885	283	9,404	686	32,579	1,375
TOTAL AIRMEN	148,501	6,721	140,226	6,897	283,323	20,639	572,050	34,257

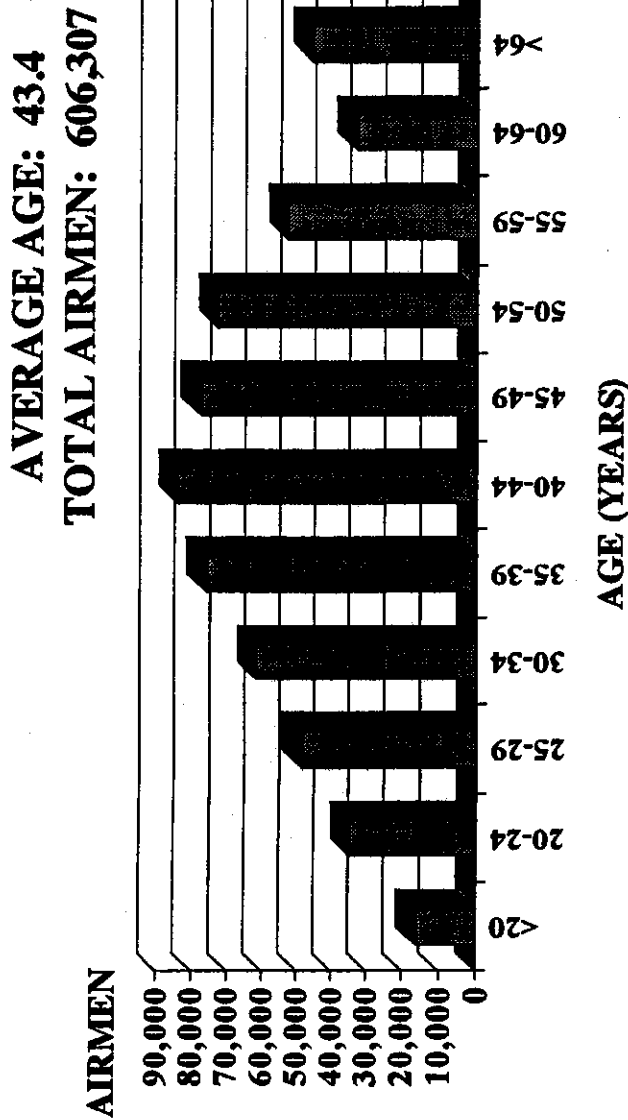
* Totals are based on active airmen certified within the past 25 months.

Source: Civil Aeromedical Institute, Aeromedical Certification Division; RIS: AC 8500-1, Aeromedical Certification Statistical Handbook Computer Run.

FIGURE IV.C

AGE DISTRIBUTION OF MEDICALLY CERTIFIED AIRMEN

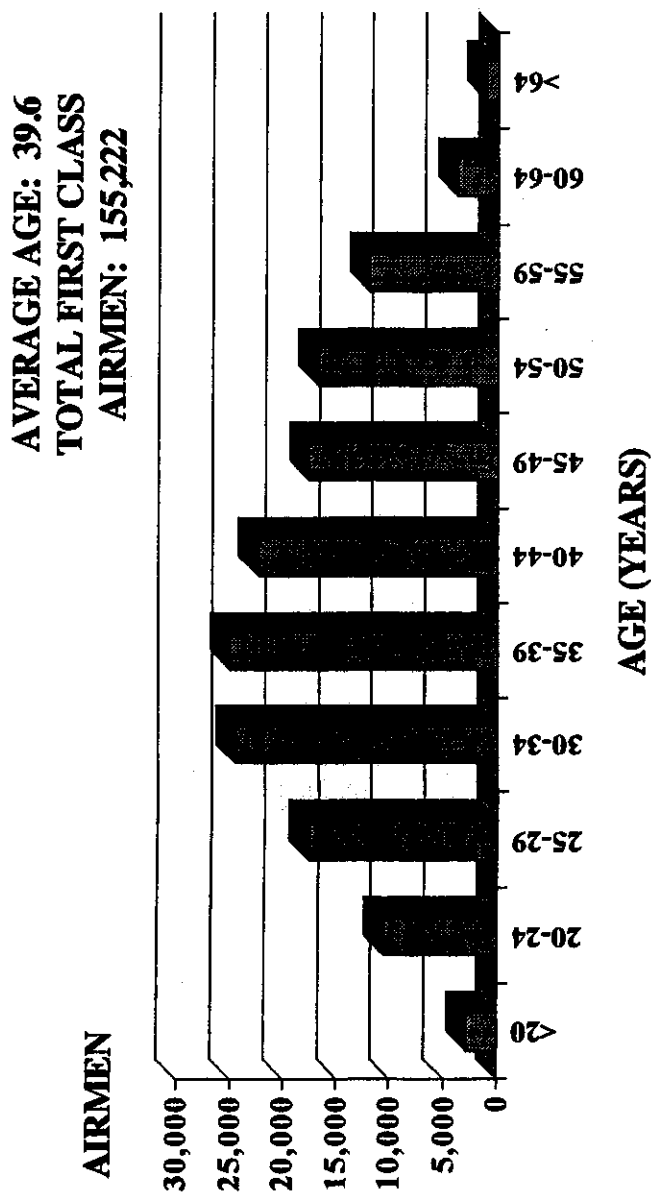
As of: December 31, 1998



Brackets are indicative of age class intervals wherein magnitudes are not apparent on this scale. In such instances, the accompanying table (Table IV.G) should be consulted for frequencies.

Source: Civil Aeromedical Institute, Aeromedical Certification Division; RIS: AC 8500-1, Aeromedical Certification Statistical Handbook Computer Run.

FIGURE IV.D
AGE DISTRIBUTION OF MEDICALLY CERTIFIED FIRST-CLASS AIRMEN
As of: December 31, 1998



Brackets are indicative of age class intervals wherein magnitudes are not apparent on this scale. In such instances, the accompanying table (Table IV.G) should be consulted for frequencies.

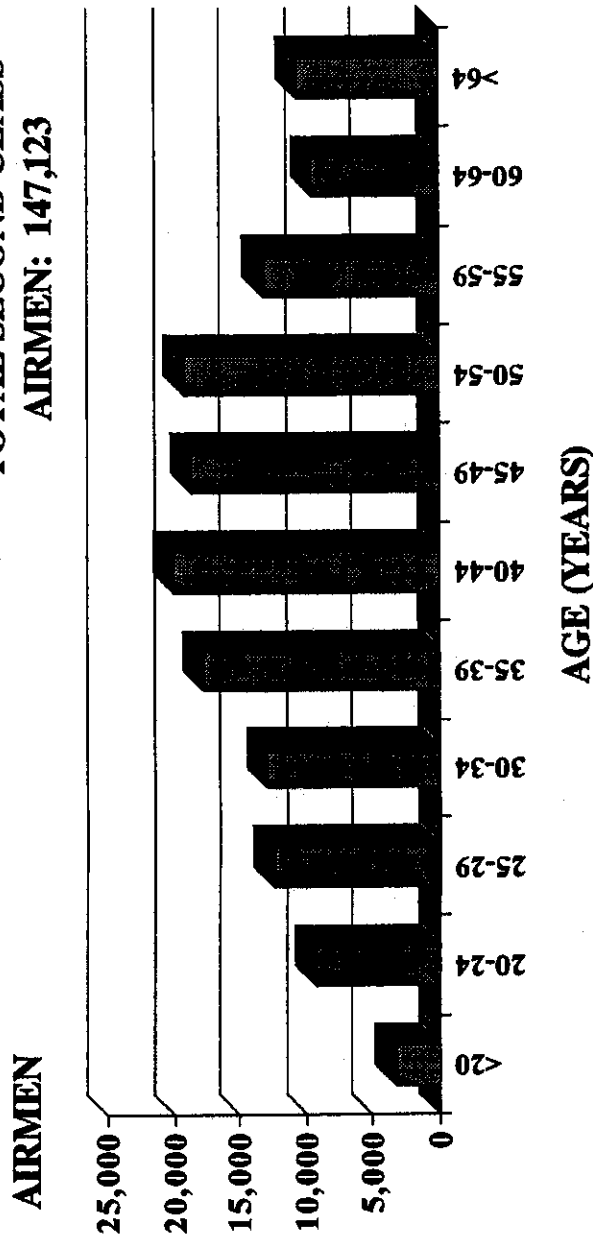
Source: Civil Aeromedical Institute, Aeromedical Certification Division; RIS: AC 8500-1, Aeromedical Certification Statistical Handbook Computer Run.

FIGURE IV.E

AGE DISTRIBUTION OF MEDICALLY CERTIFIED SECOND-CLASS AIRMEN

As of: December 31, 1998

AVERAGE AGE: 43.8
TOTAL SECOND CLASS
AIRMEN: 147,123

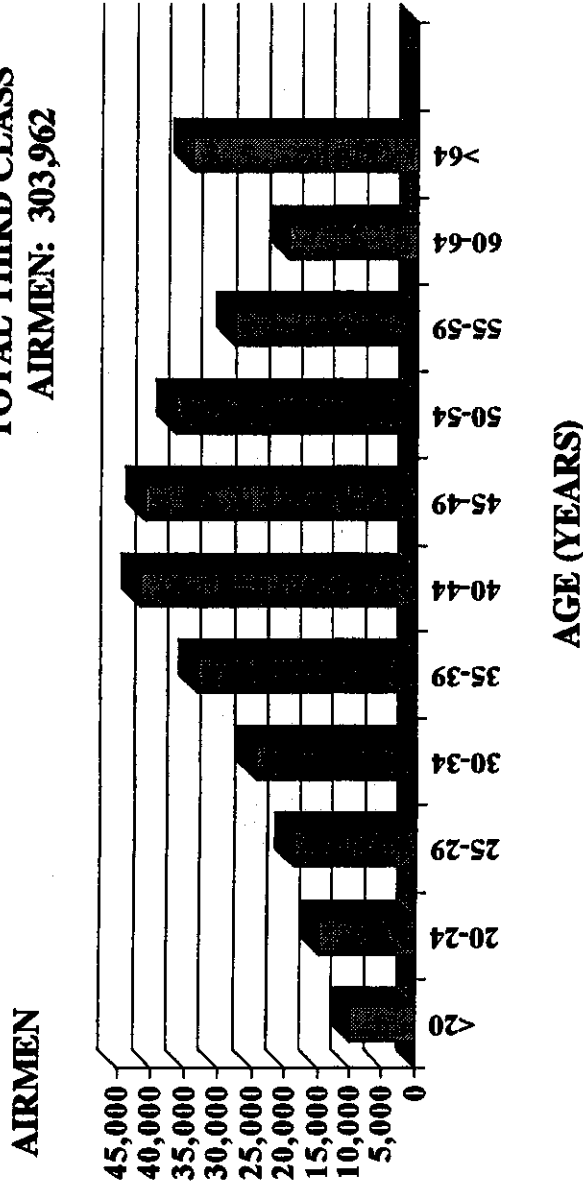


Brackets are indicative of age class intervals wherein magnitudes are not apparent on this scale. In such instances, the accompanying table (Table IV.G) should be consulted for frequencies.

Source: Civil Aeromedical Institute, Aeromedical Certification Division; RIS: AC 8500-1, Aeromedical Certification Statistical Handbook Computer Run.

FIGURE IV.F
AGE DISTRIBUTION OF MEDICALLY CERTIFIED THIRD-CLASS AIRMEN
As of: December 31, 1998

AVERAGE AGE: 45.2
TOTAL THIRD CLASS
AIRMEN: 303,962



Brackets are indicative of age class intervals wherein magnitudes are not apparent on this scale. In such instances, the accompanying table (Table IV.G) should be consulted for frequencies.

Source: Civil Aeromedical Institute, Aeromedical Certification Division; RIS: AC 8500-1, Aeromedical Certification Statistical Handbook Computer Run.

Table IV.G

AGE DISTRIBUTION OF ACTIVE AIRMEN BY CLASS AND SEX*
As of: December 31, 1998

Age	First Class		Second Class		Third Class		Total Airmen	
	Male	Female	Male	Female	Male	Female	Male	Female
Less than 15	3	-	3	-	16	2	22	2
15 - 19	2,599	378	2,827	403	8,665	1,338	14,091	2,119
20 - 24	9,497	1,077	8,432	906	13,203	1,715	31,132	3,698
25 - 29	16,419	1,275	11,635	859	17,046	1,736	45,100	3,870
30 - 34	23,147	1,420	12,172	743	22,552	1,981	57,871	4,144
35 - 39	23,936	1,198	16,751	976	30,965	2,411	71,652	4,585
40 - 44	21,706	753	19,097	949	38,955	2,950	79,758	4,652
45 - 49	17,353	397	17,930	792	38,488	2,830	73,771	4,019
50 - 54	16,847	148	18,711	521	34,602	2,276	70,160	2,945
55 - 59	11,963	53	12,856	329	26,419	1,525	51,238	1,907
60 - 64	3,900	16	9,398	186	19,059	846	32,357	1,048
65 - 69	840	3	5,813	125	16,013	562	22,666	690
70 - 74	192	3	2,858	64	10,900	318	13,950	385
75 - 79	86	-	1,519	38	5,355	129	6,960	167
80 - 84	8	-	176	3	845	12	1,029	15
85 and over	5	-	48	3	240	8	293	11
TOTAL	148,501	6,721	140,226	6,897	283,323	20,639	572,050	34,257
Average Age	39.9	32.2	44.4	37.8	46.1	39.9	44.1	38.7

* Totals are based on active certified airmen within the past 25 months.

Source: Civil Aeromedical Institute, Aeromedical Certification Division; RIS: 8500-1, Aeromedical Certification Statistical Handbook Computer Run.

FIGURE IV.H

AGE DISTRIBUTION OF AIRLINE PILOTS

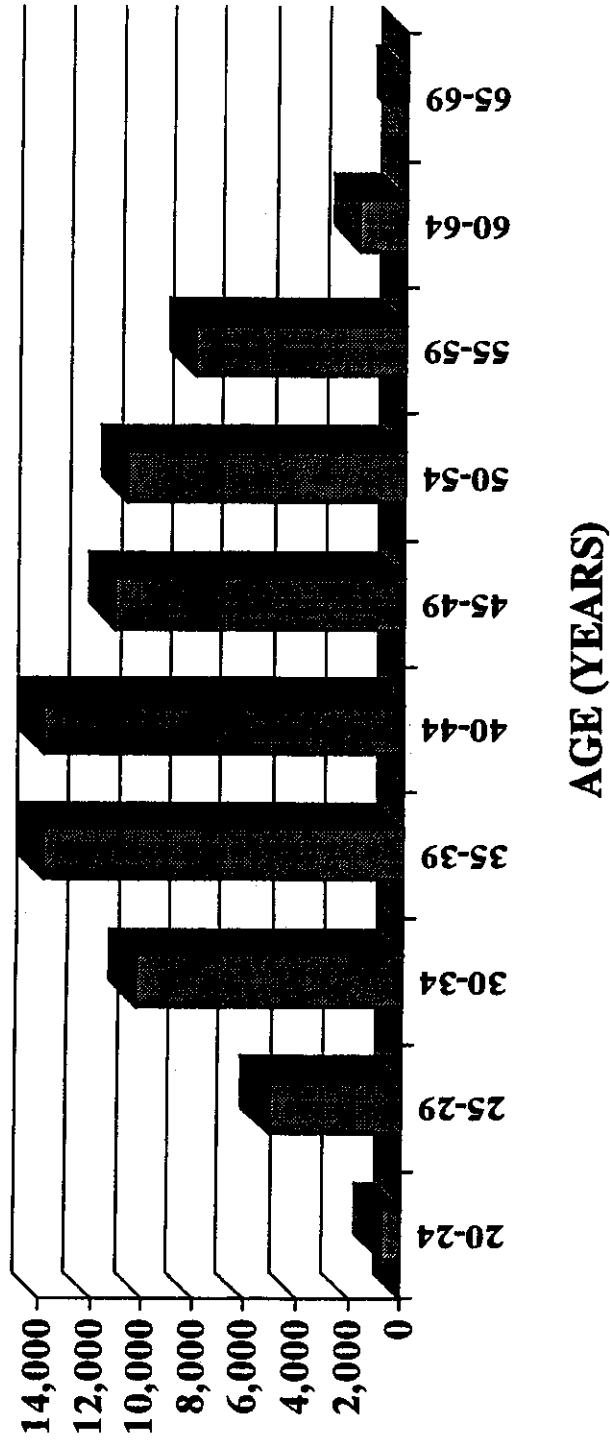
As of: December 31, 1998

AVERAGE AGE: 42.8

TOTAL AIRLINE

PILOTS: 76,865

AIRMEN



Source: Civil Aeromedical Institute, Aeromedical Certification Division; RIS: AC 8500-1, Aeromedical Certification Statistical Handbook Computer Run.

Table IV.1

AGE DISTRIBUTION OF AIRLINE PILOTS*
As of: December 31, 1998

Age Groups (1)	Airline Pilots (2)	Percent of Total		
		Certified First- Class Airmen** (3)	Airline Pilots (4)	Certified First- Class Airmen (5)
20 - 24	724	10,574	0.9	7.0
25 - 29	5,122	17,694	6.7	11.6
30 - 34	10,348	24,567	13.5	16.2
35 - 39	14,276	25,134	18.5	16.6
40 - 44	14,180	22,459	18.5	14.8
45 - 49	11,293	17,750	14.7	11.6
50 - 54	10,811	16,995	14.1	11.2
55 - 59	8,134	12,016	10.6	7.9
SUBTOTAL	74,888	147,189	97.5	96.9
60 - 64	1,827	3,916	2.3	2.5
65 - 69	150	843	0.2	0.6
TOTAL	76,865	151,948	100.0	100.0
Average Age	42.8	40.0		

* Airline Pilots, Column (2), were determined by the combination of first-class medical certificate issuance during the preceding 13 months and an occupation of "pilot for an airline". Figures in Column (3) were based on first-class medical certificate issuance during the preceding 25 months.

** Extreme age groups were deleted to more closely compare with age requirements for airline pilots. Under Part 121, Federal Aviation Regulations, no person may serve as a pilot of an airplane engaged in air carrier operations if that person has reached his/her 60th birthday. However, some airmen falling into this category still list their occupation as "pilot" even though their actual duties do not involve control of the airplane.

Source: Civil Aeromedical Institute, Aeromedical Certification Division, RIS: AC 8500-1, Aeromedical Certification Statistical Handbook Computer Run.

Table IV.J

HEIGHT DISTRIBUTION OF ACTIVE AIRMEN BY CLASS AND SEX*
As of: December 31, 1998

Height in Inches	First Class		Second Class		Third Class		Total Airmen	
	Male	Female	Male	Female	Male	Female	Male	Female
Less than 59	130	44	167	62	399	215	696	321
59	52	9	109	42	185	125	346	176
60	102	63	165	144	384	500	651	707
61	80	140	129	205	350	763	559	1,108
62	109	382	160	496	446	1,734	715	2,612
63	213	579	342	702	832	2,256	1,387	3,537
64	741	927	885	1,046	2,211	3,094	3,837	5,067
65	1,736	1,005	1,918	962	4,283	2,864	7,937	4,831
66	4,466	1,110	4,788	1,021	10,284	3,079	19,538	5,210
67	8,075	913	8,282	846	17,357	2,366	33,714	4,125
68	13,698	663	13,484	636	28,003	1,673	55,185	2,972
69	17,115	441	16,760	402	33,109	975	66,984	1,818
70	22,492	249	21,525	177	43,858	555	87,875	981
71	20,790	90	19,436	87	39,793	230	80,019	407
72	24,338	69	22,279	48	43,031	138	89,648	255
73	13,745	17	11,969	9	23,835	33	49,549	59
74	10,655	10	9,100	7	17,373	14	37,128	31
75	5,252	1	4,547	4	8,949	7	18,748	12
Over 75	4,712	9	4,181	1	8,641	18	17,534	28
TOTAL	148,501	6,721	140,226	6,897	283,323	20,639	572,050	34,257
Average								
Height	70.7	65.7	70.5	65.3	70.5	65.1	70.5	65.2

* Totals are based on active airmen certified within the past 25 months. Height is rounded to the nearest inch.

Source: Civil Aeromedical Institute, Aeromedical Certification Division; RIS: AC 8500-1, Aeromedical Certification Statistical Handbook Computer Run.

Table 1V.K

WEIGHT DISTRIBUTION OF ACTIVE AIRMEN BY CLASS AND SEX*
As of: December 31, 1998

Weight in Pounds	First Class		Second Class		Third Class		Total Airmen	
	Male	Female	Male	Female	Male	Female	Male	Female
Less than 90	6	9	8	11	31	40	45	60
90 - 99	13	24	9	45	28	124	50	193
100 - 109	60	236	55	239	151	746	266	1,221
110 - 119	258	811	208	770	562	2,159	1,028	3,740
120 - 129	818	1,395	758	1,207	1,831	3,528	3,407	6,130
130 - 139	2,591	1,403	2,338	1,328	4,803	3,768	9,732	6,499
140 - 149	5,957	1,106	5,156	994	10,223	3,158	21,336	5,258
150 - 159	11,798	682	9,867	761	19,051	2,324	40,716	3,767
160 - 169	18,316	397	14,858	523	28,896	1,584	62,070	2,504
170 - 179	22,790	229	18,895	331	37,284	1,036	78,969	1,596
180 - 189	23,885	163	20,896	219	40,498	742	85,279	1,124
190 - 199	19,912	112	18,182	155	36,676	493	74,770	760
200 - 209	14,597	51	15,080	110	30,079	309	59,756	470
210 - 219	10,081	37	10,963	63	22,562	193	43,606	293
220 - 229	7,010	18	7,912	41	17,010	142	31,932	201
230 - 239	4,229	20	5,316	31	11,543	101	21,088	152
240 - 249	2,548	4	3,577	21	7,720	73	13,845	98
Over 249	3,632	24	6,148	48	14,375	119	24,155	191
TOTAL	148,501	6,721	140,226	6,897	283,323	20,639	572,050	34,257
Average Weight	187.0	140.3	191.2	144.4	192.2	145.1	190.6	144.0

* Totals are based on active airmen certified within the past 25 months. Weight is rounded to the nearest pound.

Source: Civil Aeromedical Institute, Aeromedical Certification Division; RIS: AC 8500-1, Aeromedical Certification Statistical Handbook Computer Run.

ACTIVE AIRMEN BY OCCUPATION, CLASS AND SEX*
As of: December 31, 1998

Occupation Code	First Class		Second Class		Third Class		Total		
	Male	Female	Male	Female	Male	Female	Male	Female	
1 Pilot (Scheduled or Non-Scheduled Airline)	74,318	2,586	4,173	133	256	10	78,747	2,729	13.4
2 Flight Engineer	1,550	26	2,500	34	50	2	4,100	62	0.7
3 Flight Navigator/Flight Radio Operator	39	2	55	1	29	1	123	4	0.0+
4 Business or Executive Pilot	28,511	915	439	9	41	1	28,991	925	4.9
5 Commercial Pilot (Self Employed)	44	3	2,948	93	20	-	3,012	96	0.5
6 Commercial Pilot (Not Self Employed)	406	11	18,160	432	46	5	18,612	448	3.1
7 Aero Application (Agriculture)	66	2	2,054	9	64	4	2,184	15	0.4
8 Air Traffic Controller**	52	5	1,880	210	75	10	2,007	225	0.4
9 Flight Instructor	4,343	431	3,687	379	92	7	8,122	817	1.5
0 Aircraft Mechanic & Fixed Base Operator	374	8	2,038	26	968	6	3,380	40	0.6
X Not Given or Non-Aeronautical Occupation	38,745	2,730	102,222	5,567	281,576	20,585	422,543	28,882	74.5
F Flight Service Station Specialist	53	2	70	4	106	8	229	14	0.0+
TOTAL	148,501	6,721	140,226	6,897	283,323	20,639	572,050	34,257	100.0

* Totals are based on active airmen certified within the past 25 months. Occupation was based on response by the airmen in Block 11 of FAA Form 8500-8; if not given, occupation was classified as "non-aeronautical". Basis for percentage computations is number in each occupation category to total airmen.

** Includes military ATCs and civilian (FAA) ATCs who are also pilots and/or were issued a medical certificate.

Source: Civil Aeromedical Institute, Aeromedical Certification Division; RUS: AC 8500-1, Aeromedical Certification Statistical Handbook Computer Run.

Table IV.M

EMPLOYERS OF ACTIVE AIRMEN BY CLASS OF CERTIFICATE ISSUED*
As of: December 31, 1998

Employer	First Class	Second Class	Third Class	Total	Major Percent of Total
Air Wisconsin	238	2	10	250	
Alaska Airlines	943	218	12	1,173	
Aloha Airlines	171	32	1	204	
American Airlines	7,804	1,467	103	9,374	
American Eagle	1,711	13	7	1,731	
America West	1,366	85	19	1,470	
Atlantic Southeast	683	14	-	697	
British Airways	42	5	15	62	
Business Express	353	10	6	369	
China Airlines	62	2	-	64	
Comair, Inc.	989	38	5	1,032	
Continental Airlines	4,666	717	60	5,443	
Delta Airlines	9,079	120	148	9,347	
Evergreen Airlines	134	69	2	205	
Federal Express	3,251	353	84	3,688	
Florida Airlines	6	2	1	9	
Hawaiian Airlines	221	62	4	287	
Henson Airlines	3	1	-	4	
Horizon Airlines	552	31	10	593	
Japan Airlines	51	169	-	220	
KLM - Royal Dutch Airlines	71	5	4	80	
Korean Airlines	1,068	141	3	1,212	
Lufthansa-German Airlines	159	32	4	195	
Mesa Airlines	959	4	1	964	
Mesaba Airlines	712	19	10	741	
Midway Airlines	191	4	3	198	
Northwest Airlines	6,027	123	180	6,330	
Pan Amer. World Airways	110	12	5	127	
Pennsylvania Airlines	8	-	-	8	
Piedmont Aviation	355	14	6	375	
Saudi Arabian Airlines	1,293	91	3	1,387	
Simmons	42	3	1	46	
Southwest Airlines	2,683	29	38	2,750	
Trans World Airlines	2,548	153	27	2,728	
U.S. Air	4,557	565	49	5,171	
United Airlines	9,017	672	101	9,790	
United Parcel Service	1,775	466	65	2,306	
West Air	139	25	4	168	
World Airways	265	31	-	296	
Zantop Airways	33	4	1	38	
SUBTOTAL - ALL AIRLINES	64,337	5,803	992	71,132	(11.7)

(Continued)

Table IV.M (Continued)

EMPLOYERS OF ACTIVE AIRMEN BY CLASS OF CERTIFICATE ISSUED*
As of: December 31, 1998

Employer	First Class	Second Class	Third Class	Total	Major Percent of Total
Federal Aviation Administration (FAA)	412	4,292	200	4,904	(0.8)
Government, other than Military or FAA, includes State and Local Government	368	1,126	282	1,776	(0.3)
Aircraft Industry	639	675	693	2,007	(0.3)
Industry, other than Aircraft	505	548	615	1,668	(0.3)
Fixed Base Operation (Flying schools, etc.)	2,811	4,077	178	7,066	(1.2)
Self Employed	1,768	4,169	737	6,674	(1.1)
Other	42,727	20,222	3,810	66,759	(11.1)
Non-Aeronautical	35,667	100,852	295,034	431,553	(71.2)
Air Force	3,969	2,363	763	7,095	(1.2)
Army	444	1,323	177	1,944	(0.3)
Coast Guard	123	141	32	296	(0.0+)
Marines and Navy	1,388	1,434	385	3,207	(0.5)
National Aeronautics and Space Administration (NASA)	64	98	64	226	(0.0+)
SUBTOTAL - ALL OTHERS	90,885	141,320	302,970	535,175	(88.3)
TOTAL	155,222	147,123	303,962	606,307	(100.0)

* Totals are based on active airmen certified within the past 25 months. Employer data are provided by the airmen in Block 12 of FAA Form 8500-8. If blank or other than aeronautical employer is reflected, it is classified as "non-aeronautical".

Source: Civil Aeromedical Institute, Aeromedical Certification Division; RIS: AC 8500-1, Aeromedical Certification Statistical Handbook Computer Run.

SECTION V**MEDICAL CHARACTERISTICS OF THE AIRMAN POPULATION**

This section presents medical characteristics of the active airman population (those airmen certified within the preceding 25 months) as of December 31, 1998, by class of medical certificate issued.

Table V.A

ACTIVE AIRMEN BY NUMBER OF RESTRICTIONS CARRIED, CLASS AND SEX*
As of: December 31, 1998

Number of Restrictions	First Class		Second Class		Third Class		Total Airmen		Total	
	Male	Female	Male	Female	Male	Female	Male	Female	Airmen	Restrictions
1	63,902	2,519	80,993	3,748	163,878	11,986	308,773	18,253	327,026	327,026
2	1,304	10	2,472	46	12,658	238	16,434	294	16,728	33,456
3	34	-	280	-	363	5	677	5	682	2,046
4	2	-	5	-	13	1	20	1	21	84
5	-	-	-	-	1	-	1	-	1	5
6	-	-	1	-	-	-	1	-	1	6
More than 6	-	-	-	-	-	-	-	-	-	-
Total Airmen	65,242	2,529	83,751	3,794	176,913	12,230	325,906	18,553	344,459	362,623

* Figures are based on active airmen certified within the past 25 months.

Source: Civil Aeromedical Institute, Aeromedical Certification Division; RIS: AC 8500-1, Aeromedical Certification Statistical Handbook Run.

Table V.B

FREQUENCY OF RESTRICTIONS AMONG ACTIVE AIRMEN BY CLASS AND SEX*
As of: December 31, 1998

Restriction	First Class		Second Class		Third Class		Total Airmen	
	Male	Female	Male	Female	Male	Female	Male	Female
Must Have Available Glasses For Near Vision	14,904	173	14,566	399	39,957	2,200	69,427	2,772
Must Wear Corrective Lenses	40,399	2,133	50,717	2,697	98,554	7,746	189,670	12,576
Must Wear Corrective Lenses for Near and Distant Vision	2,117	75	5,685	221	15,025	883	22,827	1,179
Must Wear Lenses for Distant/ Possess Glasses for Near Vision	3,398	105	7,750	365	18,428	1,262	29,576	1,732
Must Wear Corrective Lenses/Possess Glasses for Near and Intermediate Vision	1,500	14	2,240	56	926	51	4,666	121
Holder Shall Possess Glasses for Near and Intermediate Vision	2,336	15	2,217	35	331	15	4,884	65
Must Wear Prismatic Correction	10	-	20	1	36	1	66	2
Must Wear Corrective Lenses: Extra Pair Must Be Available	182	5	120	4	233	18	535	27
Must Use Hearing Amplification	88	1	298	4	851	21	1,237	26
Must Wear Artificial Limb	27	1	57	-	142	4	226	5

(Continued)

Table V.B (Continued)

FREQUENCY OF RESTRICTIONS AMONG ACTIVE AIRMEN BY CLASS AND SEX*
As of: December 31, 1998

Restriction	First Class		Second Class		Third Class		Total Airmen	
	Male	Female	Male	Female	Male	Female	Male	Female
Oxygen Required when Flying Above 7,999 Feet	2	-	1	-	3	-	6	-
Passenger Carrying Prohibited	1	1	-	-	4	2	5	3
Not Valid for Pilot in Command	-	-	2	-	-	-	2	-
Not Valid for Control Tower Operator Duties	3	-	3	-	7	-	13	-
Not Valid for Air Transport Duties	1	-	1	1	-	-	2	1
Not Valid for Night Flying or By Color Signal Control (Color Vision)	273	-	786	1	5,415	19	6,474	20
Not Valid for Night Flying (Glaucoma)	2	-	5	1	13	1	20	2
Not Valid for Flying Where Radio Use is Required	15	-	38	1	117	4	170	5
Valid for Flight Service Station or Center Duties Only	-	-	1	-	-	-	1	-
Valid for Flight Test Only	4	-	2	-	4	-	10	-

(Continued)

Table V.B (Continued)

FREQUENCY OF RESTRICTIONS AMONG ACTIVE AIRMEN BY CLASS AND SEX*
As of: December 31, 1998

Restriction	First Class		Second Class		Third Class		Total Airmen	
	Male	Female	Male	Female	Male	Female	Male	Female
Second-Class Privileges Limited to Crop Dusting	-	-	32	-	-	-	32	-
Second-Class Privileges Limited to Flight Engineer Duties	-	-	96	-	-	-	96	-
Second-Class Privileges Limited to Control Tower Operator Duties	-	-	8	1	-	-	8	1
Valid for and Limited to ATC Duties Only	-	-	114	11	12	2	126	13
Second-Class Privileges Limited to Flight Navigator Duties	-	-	1	-	-	-	1	-
Valid for ATC Duties - Center Only	-	-	11	-	1	2	12	2
Valid for Flight Service Station Duties Only	-	-	-	-	1	-	1	-
Limited to Military Controller Duties	-	1	10	1	6	-	16	2
Valid for Control Tower Duties When Second Controller on Duty	-	-	-	-	2	-	2	-

(Continued)

Table V.B (Continued)
FREQUENCY OF RESTRICTIONS AMONG ACTIVE AIRMEN BY CLASS AND SEX*
 As of: December 31, 1998

Restriction	First Class		Second Class		Third Class		Total Airmen	
	Male	Female	Male	Female	Male	Female	Male	Female
Valid Only When Accompanied by Another Qualified Pilot	-	-	155	-	3	-	158	-
Valid for Student Pilot Purposes Only	41	1	83	4	847	62	971	67
Second-Class Privileges Limited to Cargo Operations	-	-	-	-	-	-	-	-
Time Limitation Restrictions	859	4	1,363	17	8,556	151	10,778	172
Special Issuance Restrictions	2	-	2	1	7	-	11	1
Miscellaneous Restrictions	450	10	419	19	852	37	1,721	66
TOTAL	66,614	2,539	86,803	3,840	190,333	12,481	343,750	18,860

* Figures are based on active airmen certified within the past 25 months; however, the restriction may have been assigned prior to the most recent examination. Airmen may have more than one restriction.

Source: Civil Aeromedical Institute, Aeromedical Certification Division; RIS: AC 8500-1, Aeromedical Certification Statistical Handbook Computer Run.

Table V.C

ACTIVE AIRMEN WITH DEFECTIVE COLOR VISION BY CLASS AND SEX*
As of: December 31, 1998

Class Issued	Frequency**			
	Male	Percent	Female	Percent
First	2,317	(0.2)	-	(0.0)
Second	3,862	(0.3)	9	(0.0+)
Third	10,314	(0.4)	38	(0.0+)
TOTAL	16,493	(0.3)	47	(0.0+)

* Figures are based on active airmen certified within the past 25 months and the assignment of the restriction "Not Valid for Night Flying or by Color Signal Control" or issuance of a waiver for deficient color vision.

** Basis for percentages is the number of active airmen by sex within each class. Percent of total is computed using the total male or female population.

Source: Civil Aeromedical Institute, Aeromedical Certification Division; RIS: AC 8500-1, Aeromedical Certification Statistical Handbook Computer Run.

Table V.D

ACTIVE AIRMEN WITH WAIVERS BY CLASS AND SEX*
As of: December 31, 1998

Class Issued	Frequency**			
	Male	Percent	Female	Percent
First	9,790	(6.6)	440	(6.6)
Second	20,583	(14.6)	844	(12.2)
Third	17,931	(6.3)	510	(2.5)
TOTAL	48,304	(8.4)	1,794	(5.2)

* Figures are based on active airmen certified within the past 25 months; however, the waiver may have been issued prior to the most recent examination. Tabulations were based on an indication of a waiver in the class issued code or the presence of a waiver number.

** Basis for percentages is the number of active airmen by sex within each class. Percent of total is computed using the total male or female population.

Source: Civil Aeromedical Institute, Aeromedical Certification Division; RIS: AC 8500-1, Aeromedical Certification Statistical Handbook Computer Run.