

## KNOW BEFORE YOU GO

This information is subject to change. Not for navigation or legal pre-flight action.



The FAA may release a From the Flight Deck Video which will highlight actual KCAK airport runway, approach, and taxiway footage combined with diagrams and visual graphics to clearly identify hot spots and other safety-sensitive items.

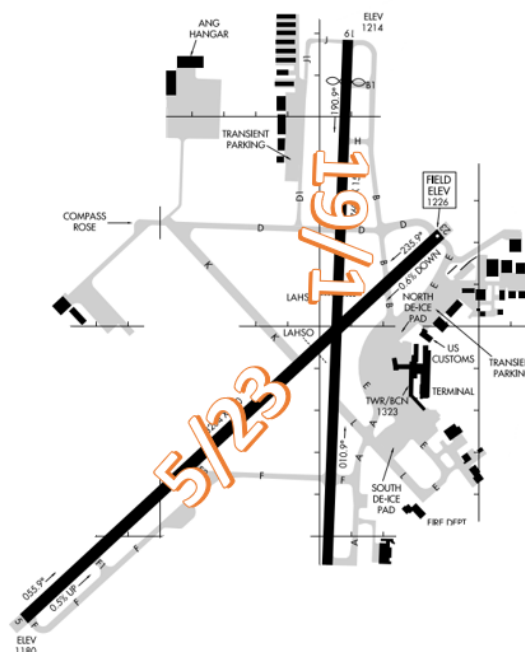
**Akron-Canton Regional Airport (KCAK)** is located between the cities of Akron and Canton in northeastern Ohio. Traffic mix includes commercial, military, cargo and both transient and local general aviation aircraft, with over 50,000 RWY operations per year.

- ✓ There are intersecting RWYs designated RWY 1/19 and RWY 5/23 and TWR will use both simultaneously when available.
- ✓ The air traffic control TWR is located at the passenger terminal on the eastern side of the airport.
- ✓ The TWY system connects the RWYs to all commercial and military facilities, including 2 FBOs on the field at 3 locations.

KCAK TWR Hours of Operation – Continuous – 24/7.

Administrative Office Open 0700L to 1500L - M through F

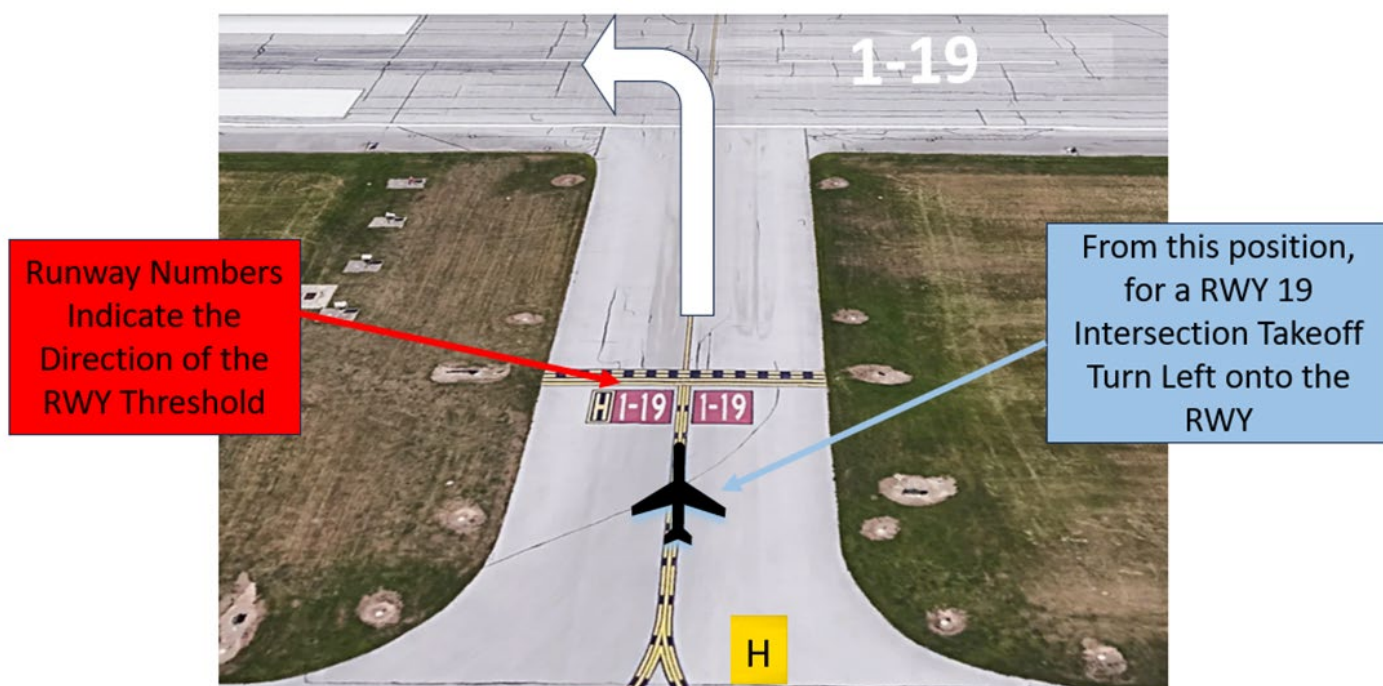
Business Phone 330-492-3801



The **airspace** at KCAK is **Class C**. (See Sectional Chart.) It underlies the 30NM Mode C & ADSB Cleveland Class B veil.

## Wrong Surface Intersection Takeoff

- ✓ At KCAK, or at any facility where intersection take offs are authorized, there is the **risk** that pilots will turn in the **wrong direction** when turning onto the RWY.
- ✓ **it is critical to verify the correct direction prior to lining up on the RWY.**
- ✓ Always check your Magnetic Compass and, (if installed), your Horizontal Situation Indicator (HSI) to verify that you are pointed in the correct direction.
- ✓ The illustration above is just an example – apply this to your specific situation.



NOTE: FOR COMPLETE ILLUSTRATIONS AND DESCRIPTIONS OF AIRPORT MARKINGS AND SIGNS REFER TO THE AERONAUTICAL INFORMATION MANUAL – CHAPTER 2.

## Additional Information

- ✓ Rwy 19 threshold displaced 601'.
- ✓ Land and Hold Short Operations (LAHSO) on RWY 5 and RWY 19.
- ✓ Aircraft taxiing on the Air CAMIS ramp and north hangar areas are not visible from the TWR.
- ✓ Deer and birds on and in the vicinity of the airport.

## FROM THE KCAK TOWER CONTROLLERS

The following is local airport specific information that your TWR Controllers want to pass along.

### Traffic Patterns

- ✓ Left and right patterns available for all RWYs with pattern altitude at 2200' MSL. We may use a "Figure 8" pattern, alternating RWYs, with pattern traffic for volume or efficiency.

### RWY Crossings

- ✓ Aircraft exiting RWY 5/23 at TWY K must pay close attention to instructions.

### Takeoff/Departure

- ✓ Standard IFR departure is RWY heading climb to 3000'.
- ✓ VFR departures are restricted to at or below 3000'.
- ✓ All VFR aircraft must receive Class C services.

### Arrival/Landing

- ✓ [See Arrival Alert Notice](#)
- ✓ RWY 19 threshold is displaced 601' and is coincident with TWY J.
- ✓ Pilots are expected to exit the RWY onto available TWY as soon as possible.
- ✓ DO NOT exit onto a crossing RWY unless TWR has directed you to do so.
- ✓ Always verify that your magnetic compass aligns with the appropriate RWY heading to ensure you have the correct surface in sight.
- ✓ TWR may conduct pattern and practice approaches to the crossing RWY.
- ✓ Restricted low approaches that are 500' above the RWY may be used to provide separation between other aircraft landing on the crossing RWY.
- ✓ Use caution when approaching the airport from the west due to possible wrong surface identification. TWY K was a RWY at one time and may appear like one from the west.



From the west, TWY K may be mistaken for a RWY.





CAUTION - Watch for aircraft in the Akron Fulton International Airport (KAKR) traffic pattern when arriving on RWY 19.

## Weather

- ✓ Pilots should be aware of weather before flight and ask for PIREPs during flight to stay in the know.

## Avoidance Areas/Critical Areas

- ✓ RWY 19 ILS Critical Area begins in the non-movement area of the northwest FBO ramp. It encompasses TWYs H and J west of RWY 19 and the portion of TWY B north of J.
- ✓ RWY 23 ILS Critical Area begins on TWY B north of TWY D.

## Special Traffic (Military / Commercial / Helicopter, etc.)

- ✓ The intersection of TWYs K and D are primarily used for the takeoff and landing of Ohio National Guard H47 Chinook and H60 Black Hawk helicopters. The Guard TWY leads north from this intersection and may be used for helicopter hover work and other operations.
- ✓ First Energy helicopters takeoff and land adjacent to the RWY 23 approach end and are restricted from overflying the FBO and Terminal Ramps.
- ✓ Hot Air Balloon traffic is expected during the last weekend in July due to the Pro Football Hall of Fame Balloon Classic activities. The balloons, are easily visible, are not required to have an operational transponder or ADS-B.

### Additional Information

- ✓ The TWR, built in 1962, is attached to the terminal.
- ✓ Areas not clearly visible from the TWR include non-movement areas in the northeast and northwest hanger complexes.
- ✓ Aircraft on Gates 1-3 are obstructed from view until aircraft push back.
- ✓ There are visibility issues at the approach end of RWYs 5 and 19. Vehicles and aircraft are visible however, exact position in relation to the RWY Safety Area/ILS Critical Area is difficult to discern.

### Special Events

- ✓ The PGA Tour Kaulig Companies Championship at Firestone Country Club is typically held during the second weekend in July.
- ✓ The Hall of Fame Balloon Classic is held during the last weekend in July.
- ✓ The Pro Football Hall of Fame Game and Enshrinement Festival is held during the first weekend in August.
- ✓ The KCAK 5K Run, which takes place on the RWY, is typically scheduled in October.

This information is subject to change. Not for navigation or legal pre-flight action. Refer to official pre-flight materials such as, but not limited to, NOTAMs, Airport Diagrams, Chart Supplement and VFR charts for the current airport-specific details.