

Know Before You Go

This information is subject to change. Not for navigation or legal pre-flight action.



[View the FAA's From the Flight Deck video](#) to see actual KFTW airport runway approach and taxiway footage combined with diagrams and visual graphics to clearly identify hot spots and other safety-sensitive items.

Fort Worth Meacham International Airport (KFTW) in

Fort Worth, Texas is a general aviation airport located approximately 15 miles southwest of Dallas/Fort Worth International Airport. Pilots should also be aware of the airport's proximity to the busy Fort Worth Joint Reserve Base (KNFW), located five miles southwest. Meacham's current facilities include three full-service FBOs, aircraft maintenance facilities and flight schools.

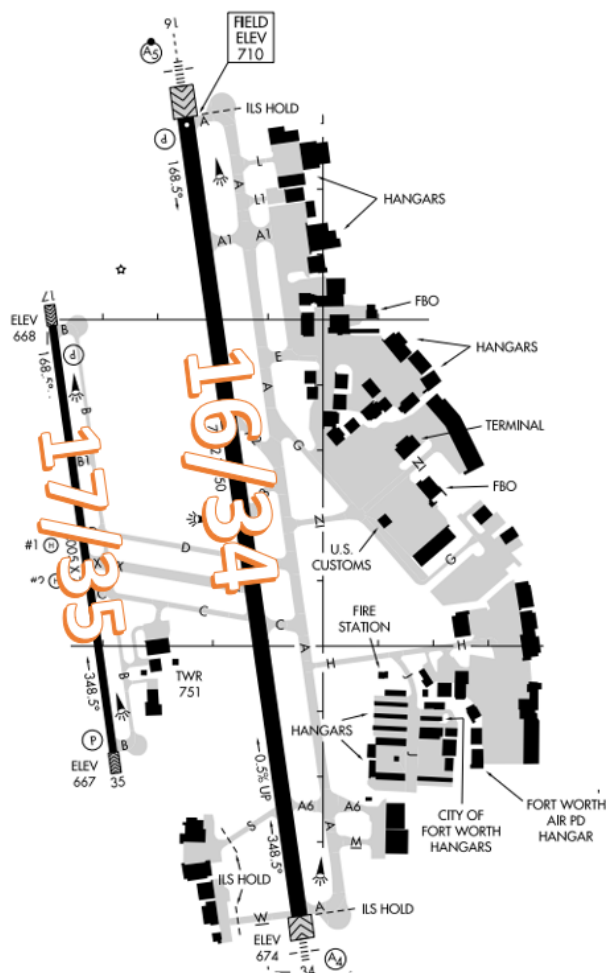
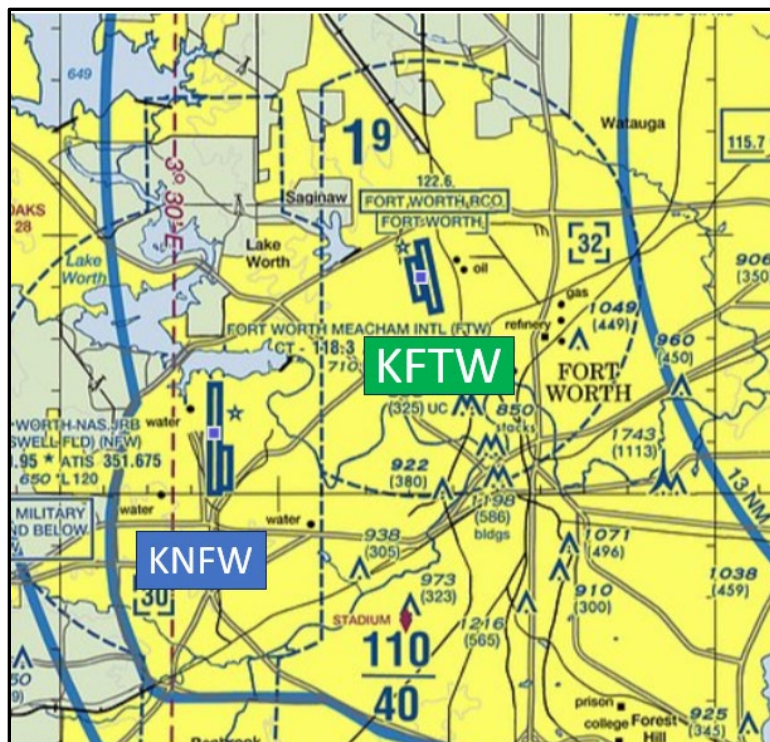
KFTW ATCT operates 24 hours

Administrative Office Open 0800L to 1600L M-F

Business Phone 817-740-3300

The RWY configuration consists of parallel RWYs 16/34 and 17/35.

The airspace at KFTW is Class D and underlies Dallas-Ft. Worth Class B. (See sectional chart)



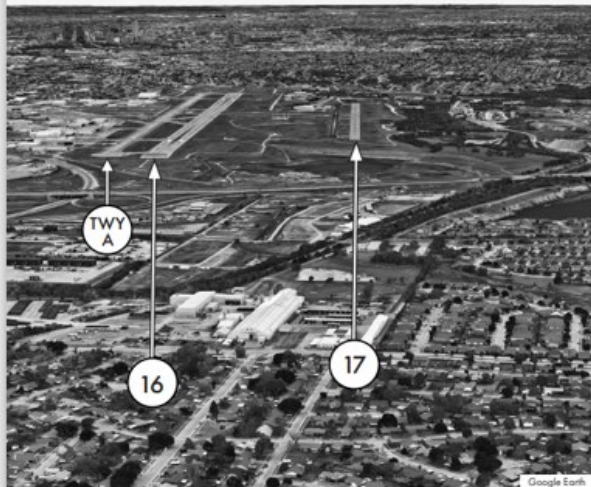
Cautions

Wrong Surface Landing Risk

- ✓ Wrong Surface Landing risk exists due to closely spaced parallel RWYs with staggered thresholds - [See Arrival Alert Notices.](#)
- ✓ Whenever a TWY runs parallel to a RWY, the risk of landing on a TWY increases.
- ✓ If available, back up all visual approaches with an instrument approach/GPS to help ensure that you are lined up for the correct surface.
- ✓ [View the From the Flight Deck-Wrong Surface Landings](#) video for additional mitigation strategies.

FORT WORTH MEACHAM INTERNATIONAL AIRPORT (FTW) ARRIVAL ALERT

Landing South
RWY 16 and RWY 17 and TWY A

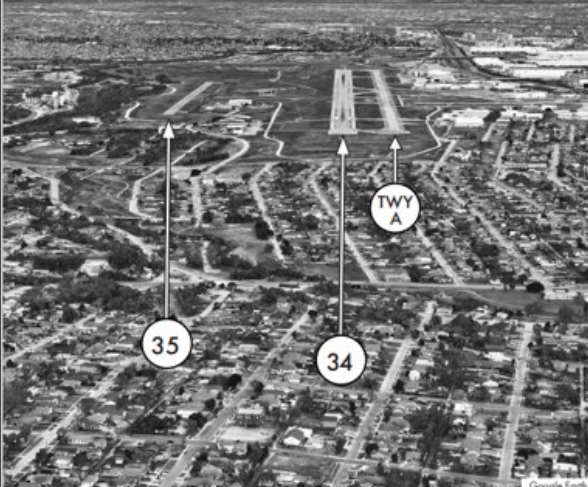


Pilots confuse RWY 17 for RWY 16. RWY 16 is over 3500 ft. longer, twice the width and over 1700 ft. closer than RWY 17. Pilots confuse TWY A for RWY 16.

Not for Navigational Purposes
For Situational Awareness Only

FORT WORTH MEACHAM INTERNATIONAL AIRPORT (FTW) ARRIVAL ALERT

Landing North
RWY 34 and RWY 35 and TWY A



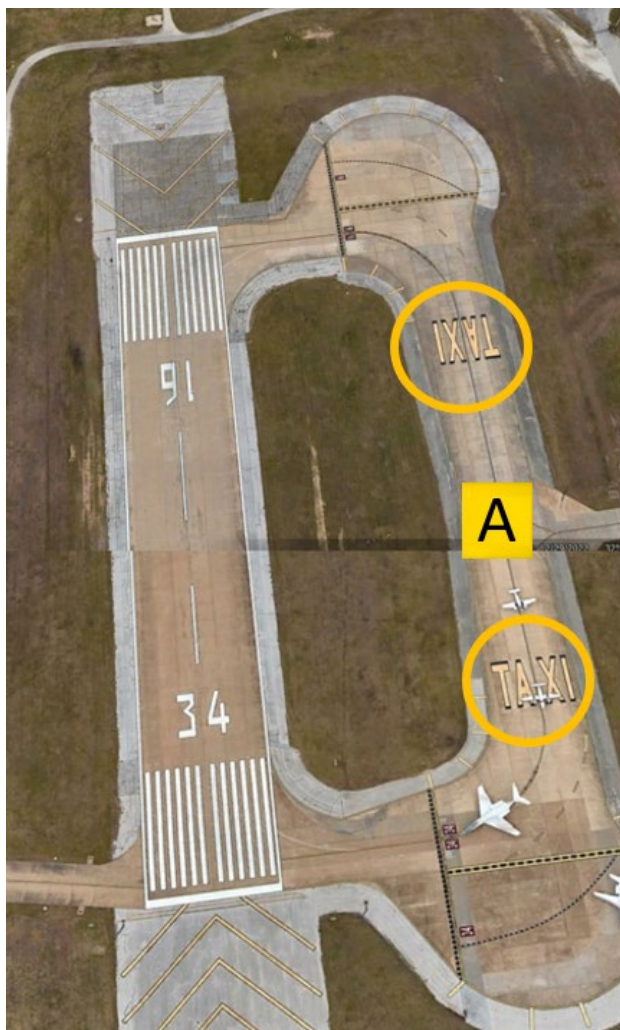
Pilots confuse RWY 35 for RWY 34. RWY 34 is over 3500 ft. longer, twice the width and over 1700 ft. closer than RWY 35. Pilots confuse TWY A for RWY 34.

Not for Navigational Purposes
For Situational Awareness Only

Wrong Airport Landing Risk

- ✓ Wrong Airport Landing risk exists due to proximity to KDFW. [See Arrival Alert Notices.](#)
- ✓ During pre-flight planning, check the sectional chart for airports in close proximity and charted reporting points.

- ✓ Use the most precise navigational aids available such as GPS, localizers, or VOR radials to positively identify the airport.
- ✓ If you're talking to ATC and you're unsure, ask the controller.
- ✓ [View the From the Flight Deck-Wrong Airport Landings](#) video for more information and mitigation strategies.



FORT WORTH MEACHAM INTERNATIONAL AIRPORT (FTW) ARRIVAL ALERT

Wrong Airport Landing
Landing North
FTW and JRB Carswell FLD (NFW)



NFW is approximately 5.5 miles Southwest of FTW Airport and its RWY is 4500 ft. longer and 50 ft. wider than FTW RWY 16/34. Pilots confuse NFW RWY 18 with FTW RWY 16. Pilots confuse NFW RWY 36 with FTW RWY 34.

Not for Navigational Purposes
For Situational Awareness Only

Surface Risk – Movement Area Cautions

TWY A parallels RWY 16/34 and pilots have confused TWY A with the runway.

To assist in mitigating this risk, TWY A has “TAXI” painted on it at both ends to help pilots recognize it as a TWY and not a RWY.

FROM THE KFTW TOWER CONTROLLERS

The following is local airport specific information that your TWR Controllers want to pass along.

General

- ✓ Practice good radio etiquette to avoid frequency congestion. Please include your call sign with all hold-short instructions, and runway assignments.
- ✓ RWY 4R and RWY 4L are preferred RWYs when wind conditions are less than 5 kts.

Ground Control

- ✓ TWY N and Taxi-lane H (on the east side of the airport) have been added to eliminate congestion and complexity while transiting to the FBOs and resident hangars. Because of these recent changes, there are large areas of unused or closed concrete that may lead to a loss of situational awareness while taxiing.
- ✓ TWR visibility is limited in certain areas – most notably in the ramp areas from the northeastern FBO to the midfield FBO.
- ✓ TWY visibility is also limited in the area on the eastern-most ramp near the fire station.
- ✓ Aircraft located in these areas may not be visible from the TWR.
- ✓ Some aircraft, clearing the RWY, are proceeding to parking without contacting ATC. Do not taxi to parking prior to receiving clearance from the TWR or Ground Control.

Arrival/Landing

- ✓ Do not mistake TWY A for RWY 16/34.

Special Traffic-Helicopters

- ✓ Increased helicopter operations on west side of the airport.

Additional Information

- ✓ Though not depicted on the Sectional Chart, RWY 17 and RWY 34 use Right Patterns whenever TWR is closed.
- ✓ Check Chart Supplement for additional remarks.

This information is subject to change. Not for navigation or legal pre-flight action. Refer to official pre-flight materials such as, but not limited to, NOTAMs, Airport Diagrams, Chart Supplement and VFR charts for the current airport-specific details.