

KNOW BEFORE YOU GO

This information is subject to change. Not for navigation or legal pre-flight action.

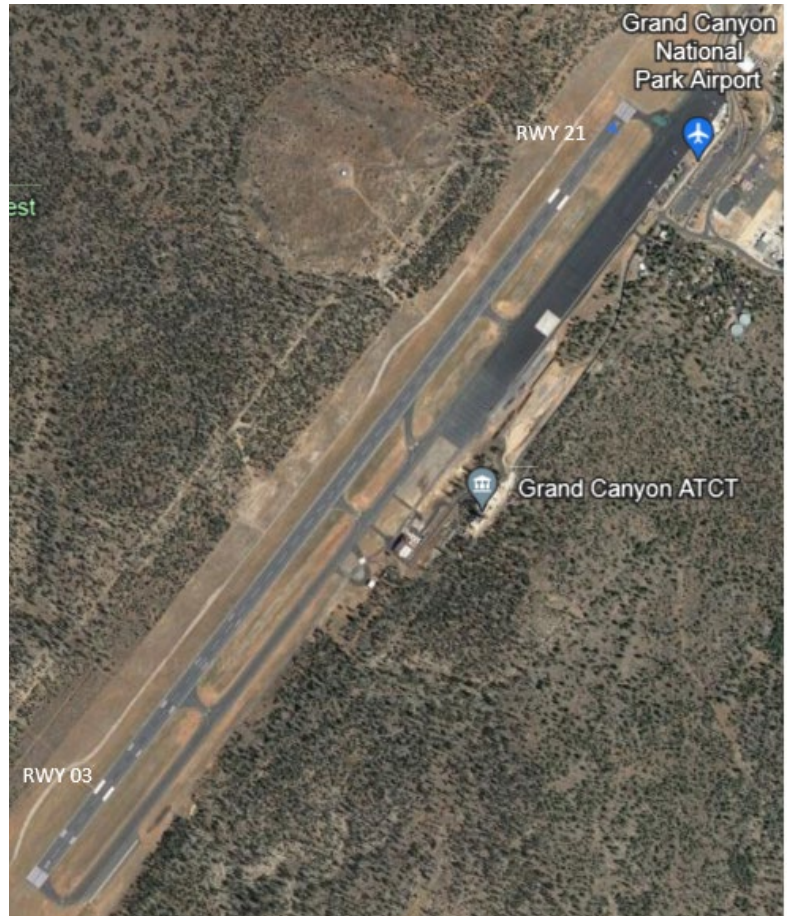


[View the FAA's From the Flight Deck video](#) to see actual KGCN airport runway approach and taxiway footage combined with diagrams and visual graphics to clearly identify hot spots and other safety-sensitive items.

Grand Canyon National Park Airport (KGCN) is a small single runway airport located near the southeast rim of the Grand Canyon in Arizona. The airspace north of the airport's Class Delta airspace is highly regulated and restricted. Flying to KGCN requires detailed pre-flight planning to become familiar with the rules and requirements to operate in and around the surrounding areas.

KGCN Tower Hours of Operation: Jun 1-Sep 30 0600L-2000L/ Oct 1-May 31 0700L-1900L.

Administrative Office Open 0630L to 1430L-M through F. Business Phone 928-638-2850



The RWY configuration consists of single RWY 3/21.

A full-length parallel TWY is south of the RWY.

Remember: Surface Markings used for Takeoff/Landing are painted White

Tour companies that provide aerial views of the Grand Canyon operate most of the traffic at the airport. The fleet mix is mostly helicopters but does include large single and turboprop twin-engine aircraft.

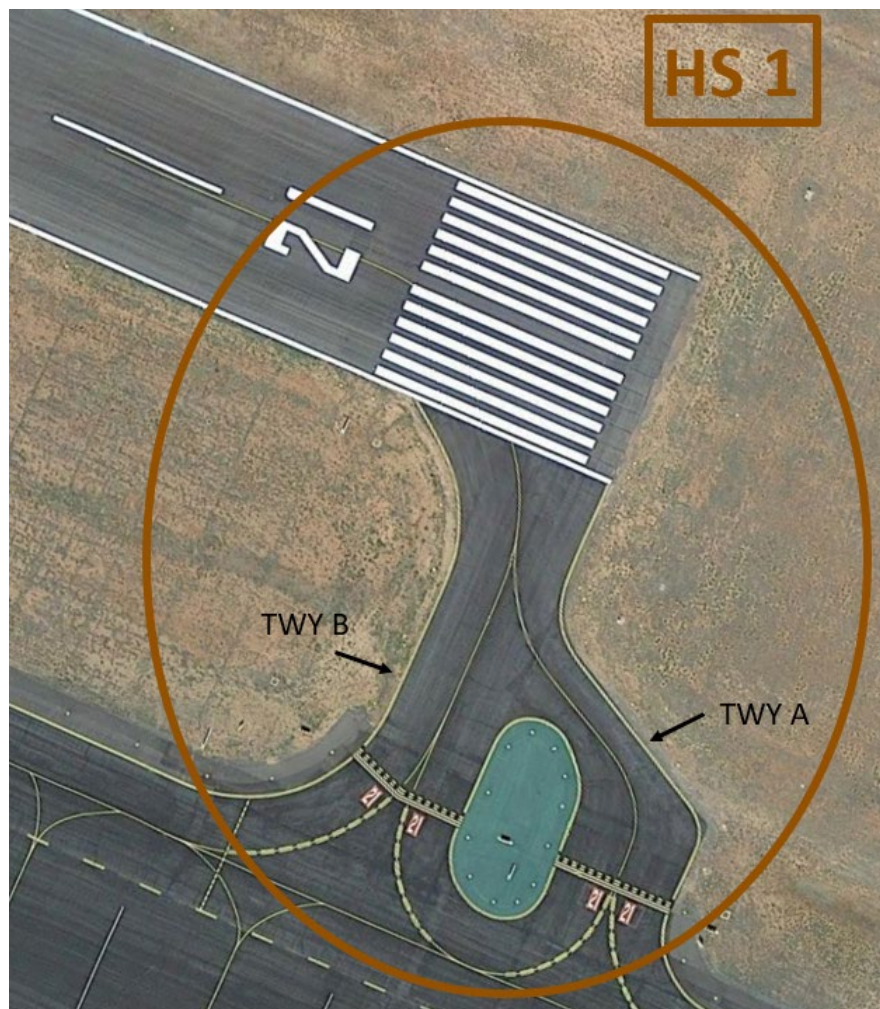
Traffic volume is seasonal, with heavy traffic periods primarily occurring during the summer months.

The **airspace** at KGCN is **Class D**. (Refer to Sectional Chart.)

Cautions

Hot Spots

HS 1 Pilots sometimes confuse TWY A and TWY B at the RWY 21 end because of the close proximity. Verify correct taxi route.



Wrong Surface Intersection Takeoff



The risk exists for a Wrong Surface Intersection Takeoff. Using the above example -

- ✓ If cleared for a RWY **3** Intersection Takeoff, you would turn onto the RWY to the **RIGHT**.
- ✓ If cleared for a RWY **21** Intersection Takeoff, you would turn onto the RWY to the **LEFT**.
- ✓ CHECK YOUR MAGNETIC COMPASS/HORIZONTAL SITUATION INDICATOR (HSI).

Additional Cautions

- ✓ Be aware that during the summer months, Density Altitude may be an issue for some aircraft. KGCM field elevation is 6,609' MSL.
- ✓ Tour companies that provide aerial views of the Grand Canyon operate most of the traffic at the airport.
 - The fleet mix is mostly helicopters but does include large single and turboprop twin-engine aircraft.
- ✓ Heavy snow becomes the issue during the winter months, check NOTAMs for snow removal operations and runway closures.
- ✓ There is a parachuting operation on the field, and the landing zone is just southeast.
 - The airport is temporarily closed to arrivals and departures while jumping is in progress.

FROM THE KGCN TOWER CONTROLLERS

The following is local airport specific information that your TWR Controllers want to pass along.

General

- ✓ IFR departures are not authorized from RWY 3 due to SFRA north of KGCN class D.
- ✓ Tower often transmits on multiple frequencies simultaneously. Listen actively and be aware that you might hear transmissions meant for aircraft on different frequencies.
- ✓ Density altitude advisories common during warm weather. May affect takeoff/landing distances.

Traffic Patterns

- ✓ RWY 21 arrivals expect midfield downwind pattern entry.

Ground Control

- ✓ There is no designated run up area for RWY 21. Common practice is run up on the ramp prior to taxi.
- ✓ Radar service is not available off the ground; upon leaving class D airspace pilots may contact Los Angeles ARTCC on 124.85 for radar service.

Departure/Arrival

- ✓ Use caution for low level helicopter operations within class D at or below 300' AGL. RWY 21 arrivals maintain at or above 7200 until established on final. All departures fly runway heading until leaving 7200.
- ✓ Turbojets should enter KGCN class D airspace at or below 200kts as practicable.
- ✓ VFR arrivals contact tower between 10-20 miles from airport for pattern entry instructions.
- ✓ Departing aircraft intending to transit the corridors should expect a southbound departure to climb to appropriate altitude.

Avoidance Areas

- ✓ Two-way communications with KGCN ATCT does not imply permission to enter the SFRA north of KGCN class D. Plan to make all pattern turns within class D airspace unless otherwise directed by tower.
- ✓ [Also see [Grand Canyon VFR Aeronautical Chart \(faa.gov\)](#) and [Grand Canyon VFR.pdf \(faa.gov\)](#)]

Special Traffic (Military / Commercial / Helicopter, etc.)

- ✓ Military aircraft (including Heavy) often utilize airport for closed traffic and practice instrument approaches. Be prepared for wake-turbulence separation.
- ✓ Use caution for parachute jump activity at KGCN airport. Be prepared to remain outside of KGCN class D airspace while parachute jump operations are in effect.



Additional Information

- ✓ Tower radar coverage unavailable below 9000 MSL. KGCN field elevation is 6,609 MSL.
- ✓ Upcoming TWY P construction between May and August of 2024, expect back-taxi operations.
- ✓ Corridor altitudes 11500 and 13500 northbound, 10500 and 12500 southbound, frequency 120.05. Refer to KGCN sectional chart. (Tour operators operate at 9500)

This information is subject to change. Not for navigation or legal pre-flight action. Refer to official pre-flight materials such as, but not limited to, NOTAMs, Airport Diagrams, Chart Supplement and VFR charts for the current airport-specific details.

